

nutr^{leaf}ichef



NCBL1700

Home Kitchen Blender
Digital Countertop Blender with Pulse Blend,
Adjustable Time and Speed Settings

USER MANUAL

For household use only!

To ensure proper operation, please read this Instruction Manual carefully before using this product. Keep this manual in a safe place for future reference.

Table of Contents

Chapter 1 Safety Use Announcement	3
Chapter 2 Components, Operating Guide & Usage	4
Chapter 3 Cleaning and Maintenance	8
Chapter 4 Fault Analysis	9
Chapter 5 Warranty and After-sale Services	9
Chapter 6 Technical Specifications	10

Chapter 1 Safety Use Announcements

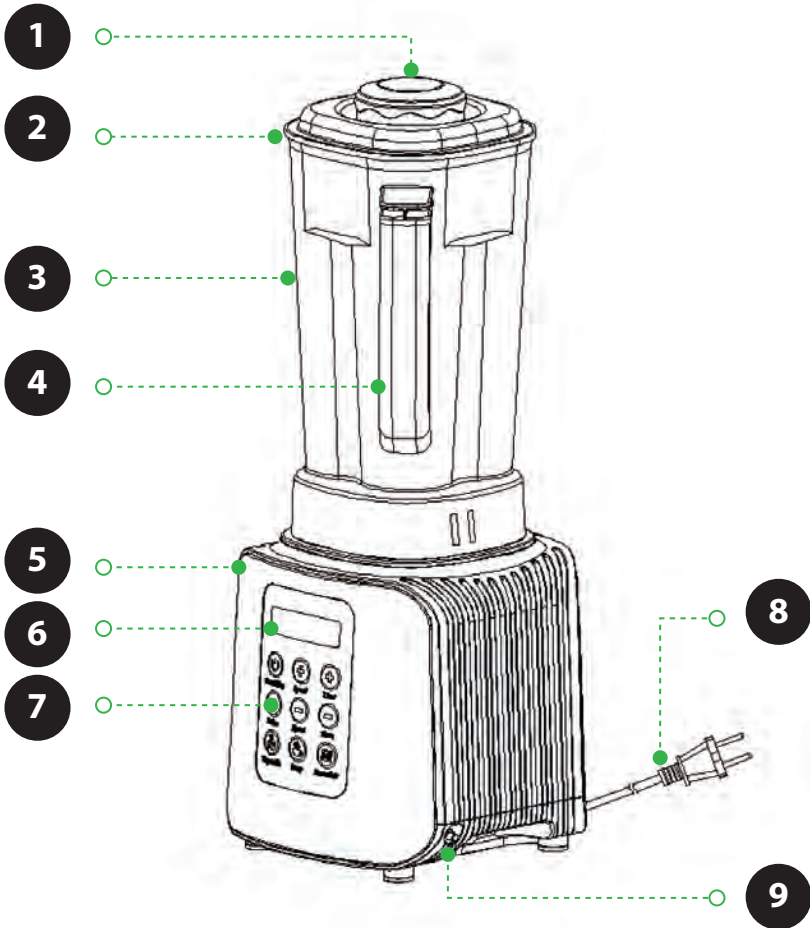
When using electric appliances, basic safety precautions should always be followed including the following:

Please read this manual carefully before using.

1. Please read this manual carefully before using.
2. This product is intended for home use only. Not suitable for commercial use!
3. Never run the product without food or before adding the food into the food cup!
4. Before using, check the stated voltage carefully. It should be in match with your local power voltage.
5. Before using, please check the power cord, plug, blade, and other parts carefully. If found damaged, please stop using the product, and contact our customer service department, to avoid danger, do not disassemble repair.
6. If the supply cord is damaged, it must be replaced by the manufacturer, its service agent or similarly qualified persons in order to avoid a hazard.
7. Do not put the body into water or other liquid, nor can rinse it under water or other liquids to protect against the risk of electrical shock. Use only dry cloth to clean.
8. Always unplug from the outlet when not in use, before removing food, assembling and cleaning.
9. Do not let children use and touch the product without supervision.
10. Product should be stored out of reach of children. Do not let reduced physical, sensory or mental capabilities, or lack of experience and knowledge of people (including children) to use or play with the product.
11. Never keep the machine running without supervision.
12. Do not use the product exceed its permitted usage range.
13. Never run the product with overfilled food or the max line.
14. Do not touch the moving parts.
15. When it's working, to prevent getting hurt, never put hands and other objects into the jar.
16. When the blade blocks up, please unplug the power first before cleaning the blocked food on the blade.
17. Do not use accessories from other manufacturers. It may cause fire, electrical shock, or damage.
18. In order to avoid getting hurt, never touch the cutting edge when cleaning.

Chapter 2 Components, Operating Guide & Usage

Components



1. Measuring cup

2. Blender cover

3. Blender jar

4. Handle

5. Motor base

6. LCD display window

7. Operation panel

8. Power cord & plug

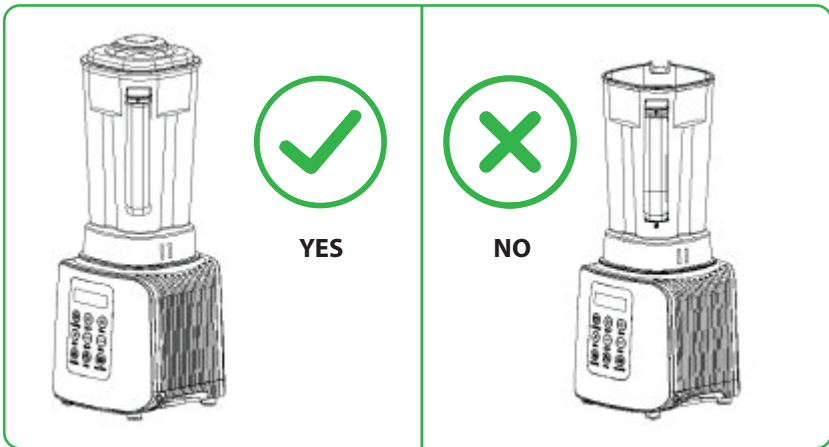
9. Power switch (ON/OFF)

Function & Usage

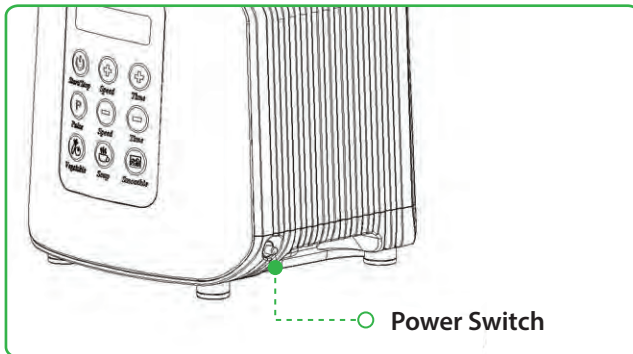
1. Before plugging in ensure that the mains voltage matches that shown on the rating label.
2. Put food into the blender jar, screw the measuring cup clockwise to the lid, cover the lid tightly, then assemble the whole blender jar with food onto the motor base. Make sure it is steady and properly installed.

NOTE

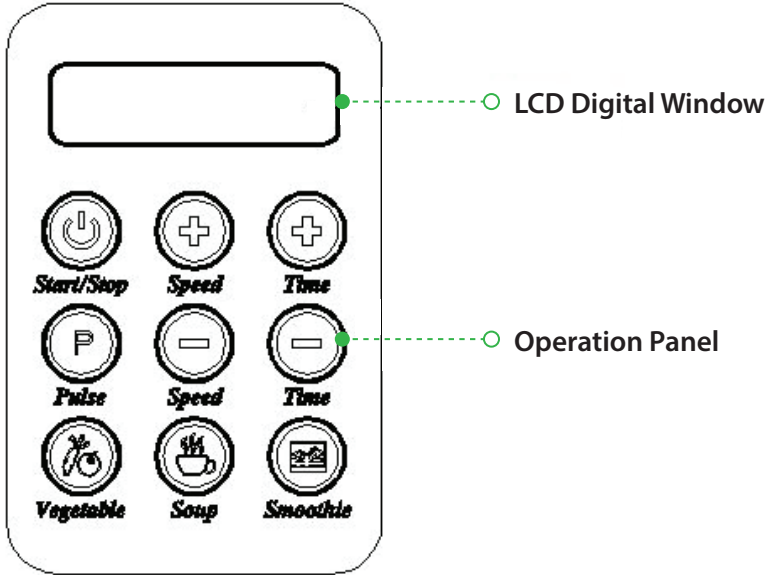
- A.** Never operate the product with overfilled food (exceeding 1.5L) or when making hot drinks like puree, soup, soybean milk
- B.** To avoid leakage and any unnecessary harm, please make sure the measuring cup and the blenders cover is fully and tightly fitted before operation.
(See picture below)



3. Press the power switch, power indicator lights up. See picture as below.



4. Users can select suitable operation programs based on own demands.
See operation panel as below.



Operations Instructions

1. LCD digital display window indicates

Speed status Minute status Second status
0 00 : 00

2. ON/OFF status

Power switch (ON/OFF): The machine will be **ON** status by pressing the power switch with power plugged. The LED indicating lamp in this button will be bright in blue color. At the same time, the indicating light on “**Start/Stop**” starts to twinkle in blue. LCD digital window displays “**0 00:00**”. By pressing the power switch again, the machine will be in **OFF** status. At the same time, indicating lights on switch and panel will be turned off with no display on LCD digital window.

3. Working status

I. Press buttons for customizing settings

1. “**Start/Stop**” **button:** To achieve Start/Stop functions.

The indicating lamp on this button will be twinkling in blue color under **ON** status. The indicating lamp on Start/Stop button will turn into blue color under working status. Set the speed and time shown on digital window according to your demands. Select a time at your convenience.

2. **“Speed+” button:** each time you press this button, its indicating lamp will twinkle, at the same time, the speed nixie tube will increase progressively. (Speed cycle: 0-1-2-3-4-5-0)
3. **“Speed-” button:** each time you press this button, its indicating lamp will twinkle, at the same time, the speed nixie tube will decrease progressively (Speed cycle: 0-5-4-3-2-1-0)
4. **“Time +” button:** each time you press this button, its indicating lamp will twinkle, at the same time, the time nixie tube will increase 5 seconds progressively accordingly, maximum 10mins.
5. **“Time -” button:** each time you press this button, its indicating lamp will twinkle, at the same time, the time nixie tube will decrease 5 seconds progressively.

Note: User can customize preferred setting, speed and time. By pressing start/stop button, the machine starts working till the set time runs out.

II. Pre- programmed settings (Totally 4 functional buttons)

6. **“Vegetable” button:** When in **ON** status, by pressing this button, the machine will be working automatically under the program as it set. The default time for this program is 1min, counting from 60 to 0 second. (Time nixie tube shown as 01:00-00:00) At the same time, the indicating lamp will be lit. Product will stop working automatically after the countdown is done and the indicating lamp goes out, resumes **ON** status.
7. **“Smoothie” button:** When in **ON** status, by pressing this button, the machine will work automatically under the program as it set. The default time for this program is 1min, counting from 60 to 0 second. (Time nixie tube shown as 01:00-00:00) At the same time, the blue indicating lamp will be lit. Product will stop working automatically after countdown is done and the indicating lamp goes out, resumes **ON** status.
8. **“Soup” button:** When in **ON** status, by pressing this button, the machine will work automatically under the program as it set. The default time for this program is 6mins. At the same time, the blue indicating lamp will be lit. Product will stop working automatically after countdown is done and the indicating lamp goes out, resumes **ON** status.

9. **“Pulse” button:** Press and hold this button, the machine begins to work and the blue indicating lamp will be lit. Release the button to stop, the indicating lamp goes out, resumes **ON** status.

Note:

1. Once pressing a certain button, corresponding indicating lamp will be lit, other light goes out.
2. The product has 4 pre- programmed settings: “Pluse”, “Vegetable”, “Smoothie”, “Soup”. Under these 4 programs, speed and time are unable to be adjusted and works only on Start/Stop button.

Chapter 3 Cleaning and Maintenance

Before first use and after every use, clean each part thoroughly. Periodically check all parts before reassembly. If any part is damaged or blender jar is chipped or cracked, DO NOT USE BLENDER.

NOTE: In order to avoid getting hurt, never touch the cutting edge when cleaning.

1. Always unplug your **NCBL1700** from the electrical outlet before cleaning.
2. Do not put the body into water or other liquid, nor can rinse it under water or other liquids. Clean the housing by wet cloth.
3. Do not use steel wire red velvet, abrasive cleaners or corrosive liquids (such as gasoline or acetone to clean to product.
4. Store your blender in its packing or in a clean, dry place.

Chapter 4 Fault Analysis

Please check and analyze the fault before contacting the after-sales service department.

Fault Phenomenon	Fault Analysis	Fault Removal
Pressed the buttons and no feedback	Check the Power cord and confirm it is inserted	Plug the Power cord
	Check the power switch and confirm if it is on	Press the power switch
	Check the machine and parts if all are assembled well	Reassemble the machine and parts following the user manual
Have peculiar smell while working	It is normal phenomena for the first time uses. If there's still peculiar smell after a period using, stop using the machine	Unplug the power to cool down for more than 30mins.
Stops working at midway	Under pre- programmed settings: Check if there's block up in the blade accessories.	if theres block up in the cross blade, unplug the power, get rid of the blocked food. We suggests to reduce the food in the jar,
	Under customize setting: Check if the speed setting is correct	Check the speed setting to see if it was properly set.

Chapter 5 Warranty and After-sale Services

This product has no user-serviceable parts. Do not attempt to examine or repair this product yourself. Only qualified service personnel should perform any servicing. In case of damage, contact our after sales support line for advice on inspection, repair or return of the damaged product.

NCBL1700

Home Kitchen Blender

Digital Countertop Blender with Pulse Blend, Adjustable Time & Speed Settings

Features:

- Professional Home Kitchen Blender System
- Sleek, Modern Food Blender Style
- High-Speed Blending Motor
- Simple Electric Plug-in Design
- Unique Button-Activated 'Pulse' Blend Ability
- Adjustable Blending Time & Blend Speed Settings
- (3) Preset Blend Modes: Vegetable, Soup, & Smoothie
- Digital LCD Display Screen
- Hassle-Free Button Controls
- Stainless Steel Cutting Blade
- Powerful 360° Cylindrical Impact for Instant Nutrition Extraction
- Reinforced Serrated Blades Blend Ice Easily
- Stain Resistant & Simple to Clean
- Large Capacity Easy-Pour Container
- BPA Free, Food Grade Construction
- Safe for Placement on Any Kitchen Table or Counter
- Perfect for Mixed Drinks, Fresh Juices, Smoothies, Milkshakes & More

What's in the Box:

- Electric Blender Base
- Blend Container with Lid and Blade
- Food Recipe Book
- Removable Lid Cap & Plunger

Technical Specs:

- High-Powered Blender Motor: 1700 Watt
- Blend Speed Settings: Up to 30,000+ RPM
- Adjustable Speed Control: (5) Speed Settings
- Adjustable Blend Time Setting: up to 10 Minutes
- Blender Container Capacity: 1.7 Liter (57 oz.)
- Noise Operating Level: <90dB
- Construction Material: Clear Tritan Blend Container, Engineered ABS Housing
- Power Cable Length: 3' ft.
- Power Supply: 120V
- Total Blender Size (L x W x H): 7.8" x 7.9" x 19.28" –inches



Questions? Issues?

We are here to help!

Phone: (1) 718-535-1800

Email: support@pyleusa.com



WARNING:

This product can expose you to a chemical or group of chemicals, which may include "Lead (Pb)" which is known in the state of California to cause cancer, birth defects, or other reproductive harm. For more info, go to <https://www.p65warnings.ca.gov/>.



nutrichef