

# PYLE

PyleUSA.com



## Digital Practice Drum Pad

8 Inch Rechargeable Drum Pad with LCD Display, Adjustable Folding Tripod Stand, and 1 Pair of Drum Sticks

**USER GUIDE**

Before you use this *Digital Practice Drum Pad*, we recommend that you carefully read through this manual.

Please keep the instruction manual for future reference.

### **FEATURES:**

- 8-inch Digital Practice Drum Pad
- Height Adjustable Tripod Stand
- 3.5mm Headphone Jack, TYPE-C Power
- Controls: Beat Button, Up & Down Keys, On/Off, Volume Wheel
- Rechargeable
- Beat and Speed Detection
- LCD Display
- Adjustable Volume at Will
- Lightweight and Adjustable Folding Tripod Stand
- Pairs of Drum Sticks for Drum Practice
- Built-in Speaker
- Collapsible Metal Tripod Stand
- Perfect Learning and Practice Sets
- Popular Oak Drum Sticks
- Environmentally Friendly Rubber
- Portable Digital Drum Practice Pad
- Travel Bag fits All Kit Pieces for Easy Transport
- Used for a Beginner or Professional

### **WIRELESS BT STREAMING:**

- Drum Pad
- Tripod Stand
- One Pair of Drum Sticks

### **TECHNICAL SPECS:**

- Construction Materials: ABS and Rubber
- Tempo Range: 40 to 208bpm
- Power Supply: 5V AC Adapter
- Drum Size: 9.45" x 10.63" x 1.06" -inches
- Drum Pad Dimensions: 8" -inches
- Black Bag Dimensions: 22.83" x 11.42" x 2.95" -inches
- Tripod Stand Folded Dimensions: 20.47" x 4.13" x 3.15" -inches

## **CAUTIONS**

### **Location**

Using the device in the following locations can result malfunction.

- Locations of extreme temperature or humidity
- Excessively dusty or dirty locations
- Locations of excessive vibration
- Close to magnetic fields

### **Power supply**

Be sure to turn the power OFF when the unit is not in use. Use only the supplied AC adaptor and the correct voltage. To prolong battery life please cycle charge every three months if not in regular use.

In order to make full use of the performance of the lithium battery, make sure the temperature is between -10 and 60°C when the battery is being charged.

### **Interference with other electrical devices**

Radios and televisions placed near by may experience reception interference. Operate this unit at a suitable distance from radios and televisions.

### **Handling**

To avoid breakage, do not apply excessive force to the switches or display.

### **Care**

If the exterior becomes dirty, wipe it with a clean, dry cloth.

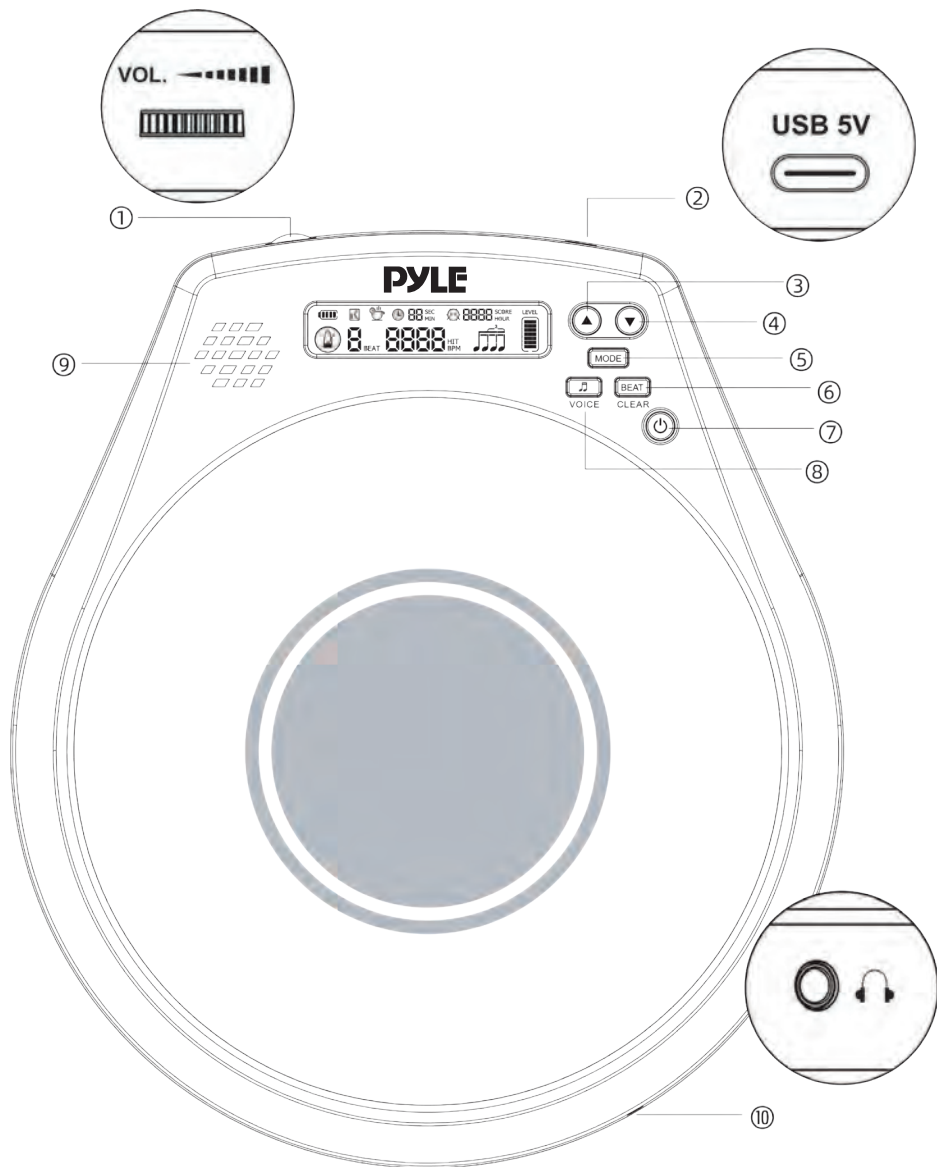
Do not use liquid cleaners such as benzene or thinner, or cleaning compounds of flammable polishes.

### **Keeping foreign matter out of your equipment**

Never set any container with liquid near this equipment.

If liquid gets into the equipment, it could cause a breakdown, fire, or electrical shock. Be careful not to let metal objects get into the equipment.

# PANEL AND FUNCTIONS



- ① Volume
- ② USB Type-C Port
- ③ ④ Up/Down
- ⑤ Mode
- ⑥ Beat
- ⑦ ON/OFF
- ⑧ Rhythm
- ⑨ Speaker
- ⑩ Earphone output

## HOW TO USE

Press and hold the "⏻" button to turn on/off.

### 1. Metronome Mode

#### Open/Pause Metronome

Short press the "⏻" button

#### Set Tempo

Short press "▲" "▼" button to change tempo: 40 BPM --208 BPM

#### Choose Beats

Short press the "BEAT" button to select beats: 0, 1, 2, 3, 4, 5, 6, 7, 8, 9

#### Choose Rhythm

Short press the "🎵" button to select the rhythm: 🎵 🎵🎵 🎵🎵🎵 🎵🎵🎵🎵 🎵🎵🎵🎵🎵 🎵🎵🎵🎵🎵🎵

#### Set Time

Short press "MODE" button to set (10, 20, 30, 40, 50, 60 Mins or unlimited)

#### Voice

Press and hold the "VOICE" button to start, and press and hold again to switch "Chinese - English - Close the voice".

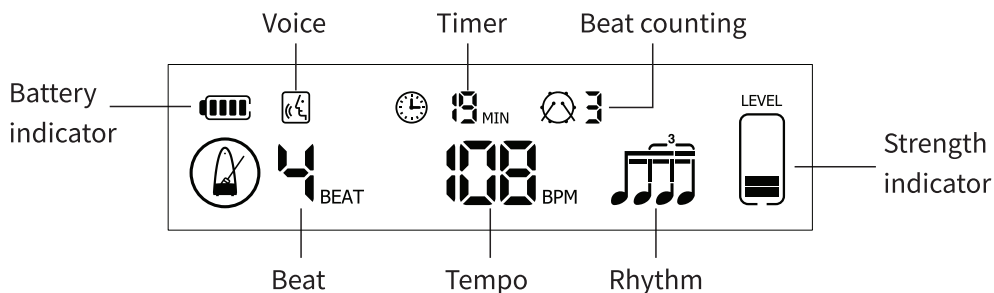


Diagram 1

## 2. Counting mode

Counting the hits within set time and highest record will be saved.

Press and hold "**MODE**" button to select counting mode (diagram 2), then short press MODE to choose the counting time (15, 30, 45, 60, 75, 90 seconds or unlimited). Press the "⏻" button to reset.

**Restore Defaults:** Press and hold the "**BEAT**" (CLEAR) button until the word "**CLr**" appears and wait for restore completed.

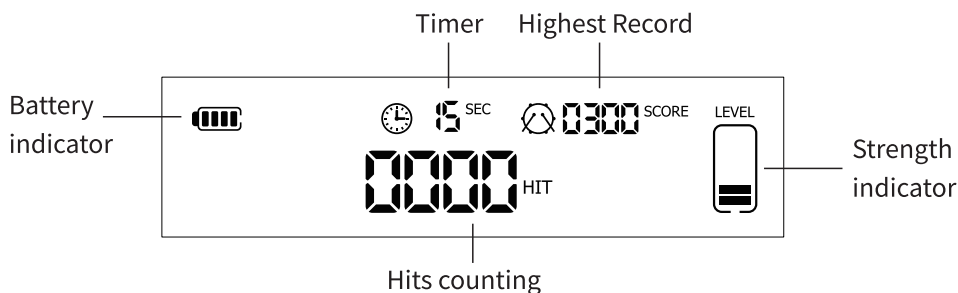


Diagram 2

### Default Chart

Time	Highest record	Time	Highest record
15	100	75	500
30	200	90	600
45	300	Unlimited	---
60	400	---	---

## 3. Speed detection mode

The average tempo and total usage time will be display under this mode.

Press and hold "**MODE**" button to select Speed detection (diagram 3), then short press "**MODE**" to choose the counting time (1, 5, 10, 15, 20, 25, 30 Mins or unlimited). Counting begins at your frist hit, press the "⏻" button to reset.

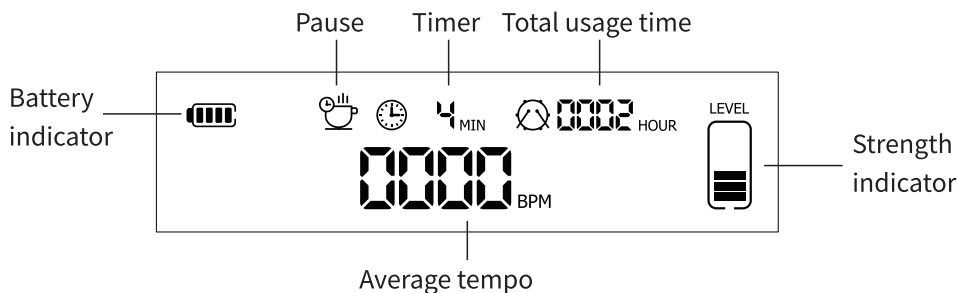


Diagram 3

## Reminder:

1. If no operation for one minute, the system will enter pause mode automatically, and power off in 5 mins. Mode and settings will be memorized before power off.
2. "🕒 🗄️" Indicates no set time.

## 4. Total practice time

It has a limit capacity of recording time for maximum 10,000 hours, and reset when up to 10,000 hours every time.

The total usage time includes the time that you use metronome mode, counting mode and speed detection mode.


The total practice time is not allowed to deleted or modified manually.

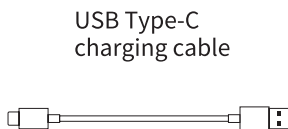
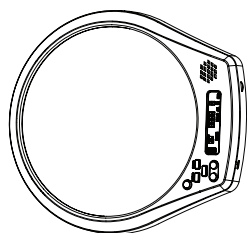
## 5. Strength level indicator of pad hits

According to the different position and strength that you hit, it will display the current strength value, which is useful for training strength.

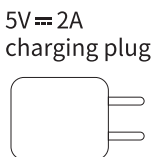
## RECHARGE

Connect USB Type-C charging cable and use 5V==2A charging plug for charging,

 will blink when charging, stop blinking when full charged.



USB Type-C  
charging cable



5V==2A  
charging plug



Battery  
indicator

100%
75%
50%
25%
0%

## EXTERNAL DEVICES

Headphone or amp can be connected to the 3.5mm output jack.

The speaker is no sound when the headphone be connected.

## STAND (OPTIONAL PURCHASE)

This pad can be used with APS-01 tripod (optional purchase)

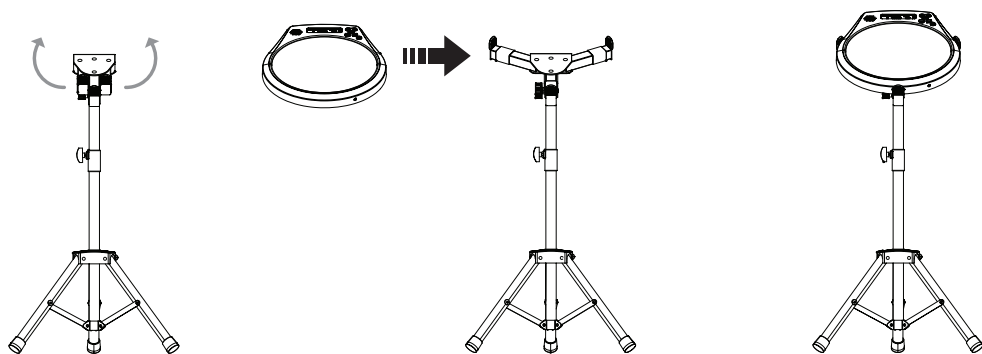


Diagram 4

### FCC Warning:

This equipment has been tested and found to comply with the limits for a Class B digital device, pursuant to part 15 of the FCC Rules.

These limits are designed to provide reasonable protection against harmful interference in a residential installation. This equipment generates, uses and can radiate radio frequency energy and, if not installed and used in accordance with the instructions, may cause harmful interference to radio communications. However, there is no guarantee that interference will not occur in a particular installation. If this equipment does cause harmful interference to radio or television reception, which can be determined by turning the equipment off and on, the user is encouraged to try to correct the interference by one or more of the following measures:

- Reorient or relocate the receiving antenna.
- Increase the separation between the equipment and receiver.
- Connect the equipment into an outlet on a circuit different from that to which the receiver is connected.
- Consult the dealer or an experienced radio/TV technician for help.



**Caution:** Any changes or modifications to this device not explicitly approved by manufacturer could void your authority to operate this equipment. This device complies with part 15 of the FCC Rules. Operation is subject to the following two conditions: (1) This device may not cause harmful interference, and (2) this device must accept any interference received, including interference that may cause undesired operation.

This equipment complies with FCC radiation exposure limits set forth for an uncontrolled environment. This equipment should be installed and operated with minimum distance 20cm between the radiator & your body.



### California Prop 65 Warning

**⚠️ WARNING:**

This product contains Nickel carbonate which is known to the state of California to cause cancer birth defects and other reproductive harm. Do not ingest.

For more info go to: [www.P65warnings.ca.gov](http://www.P65warnings.ca.gov)



# PYLE

PyleUSA.com



**VISIT US ONLINE:**

*Have a question?*

*Need service or repair?*

*Want to leave a comment?*

[PyleUSA.com/ContactUs](http://PyleUSA.com/ContactUs)

PYLE

***Questions? Comments?***

We are here to help!

Phone: (1) 718-535-1800

Email: [support@pyleusa.com](mailto:support@pyleusa.com)