

PYLE

PyleUSA.com



PDMIUSB75

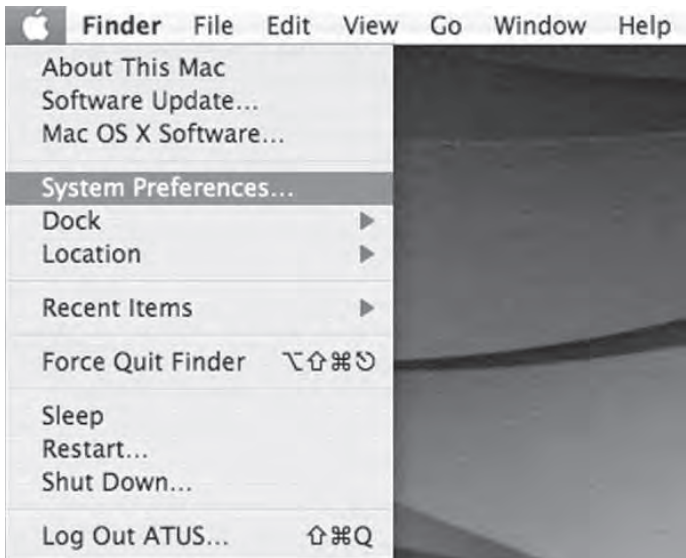
Professional Streaming USB Microphone

High-Res. Mic with USB Cable, Tripod Stand
and Mic Shock Mount

User Manual

PRELIMINARY SETUP WITH MAC OS X

1. Plug the free end of the provided USB cable into the USB port on your computer. Your computer will automatically recognize the USB device.
2. To select the **Pyle USB Microphone** as your audio input first open your System Preferences.

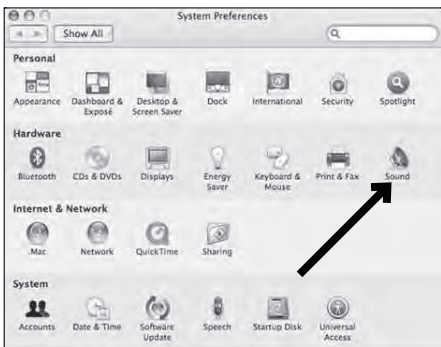


Note:

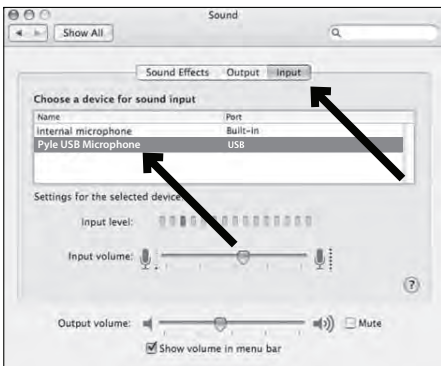
Many recording software programs are available online.

Audacity is a widely used free software for recording and editing sounds.

3. Next, click Sound to display the **Sound Preference** panel.



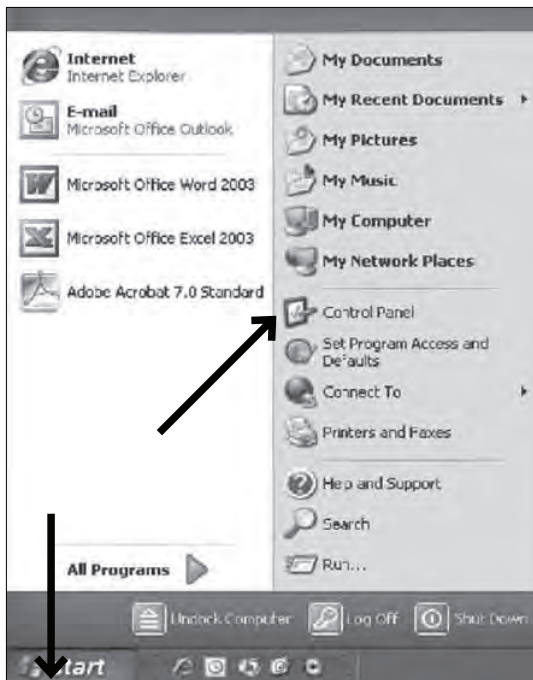
4. Click the input tab and select the **Pyle USB Microphone** as the device for sound input.



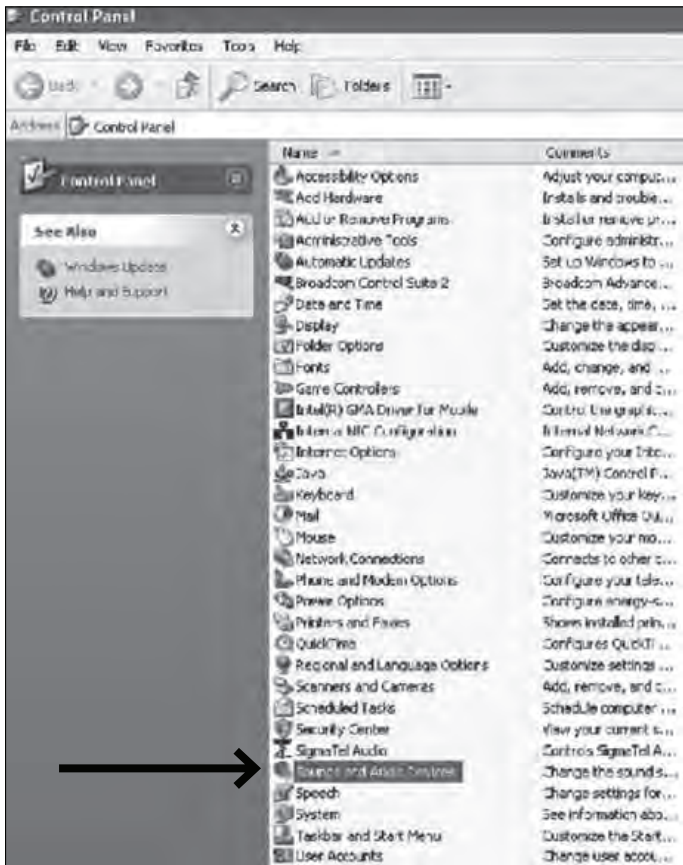
Your preferences are now set to use the **Pyle USB Microphone** on your Mac with the recording program of your choice.

PRELIMINARY SETUP WITH WINDOWS XP

1. Plug the free end of the provided USB cable into the USB port on your computer. Your computer will automatically recognize the USB device.
2. To select the **Pyle USB Microphone** as your default recording device, begin at your **START** menu.
3. Select Control Panel.



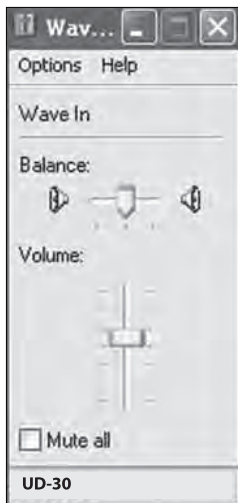
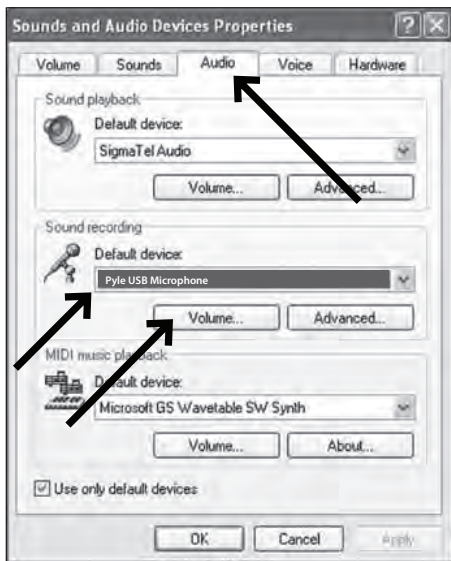
4. Select Sounds and Audio Devices.



The screenshot shows the Windows Control Panel window. The address bar displays 'Control Panel'. A 'See Also' sidebar on the left lists 'Windows Updates' and 'Help and Support'. The main content area is a list of control panel items with columns for 'Name' and 'Comments'. The item 'Sounds and Audio Devices' is highlighted, and a black arrow points to it from the left.

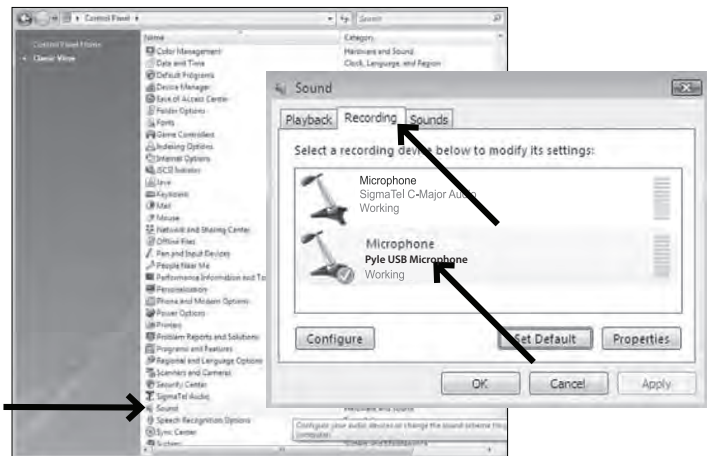
Name	Comments
Accessibility Options	Adjust your comput...
Add Hardware	Installs and trouble...
Add or Remove Programs	Install or remove pr...
Administrative Tools	Configure administ...
Automatic Updates	Set up Windows to ...
Broadcom Control Suite 2	Broadcom Advance...
Date and Time	Set the date, time, ...
Display	Change the appear...
Folder Options	Customize the dis...
Fonts	Add, change, and ...
Game Controllers	Add, remove, and c...
Intel(R) GMA Driver for Mobile	Control the graphic...
Intel(R) NIC Configuration	Intel(R) Network C...
Internet Options	Configure your Inter...
Java	Java(TM) Control P...
Keyboard	Customize your key...
Mail	Microsoft Office O...
Mouse	Customize your mo...
Network Connections	Connects to other c...
Phone and Modem Options	Configure your tele...
Power Options	Configure energy-s...
Printers and Faxes	Shows installed prin...
QuickTime	Configures QuickT...
Regional and Language Options	Customize settings ...
Scanners and Cameras	Add, remove, and c...
Scheduled Tasks	Schedule computer ...
Security Center	View your current s...
SignaTel Audio	Control the SignaTel A...
Sounds and Audio Devices	Change the sound s...
Speech	Change settings for...
System	See information abo...
Taskbar and Start Menu	Customize the Start...
User Accounts	Change user accont...

- Adjust computer volume by clicking on the Volume button beneath the Sound recording default device.
- Through the Wave In window, you can set the computer volume or mute the microphone.
- Your preferences are now set to use the **Pyle USB Microphone** with the Windows and with the recording program of your choice.



PRELIMINARY SETUP WITH WINDOWS VISTA

1. Plug the free end of the provided USB cable into the USB port on your computer. Your computer will automatically recognize the USB device.
2. **START** menu » **Control Panel** » **Sound**
To select the **Pyle USB Microphone** as your default recording device, begin at your **START** menu. Select Control Panel.
3. Select (double-click) Sound.

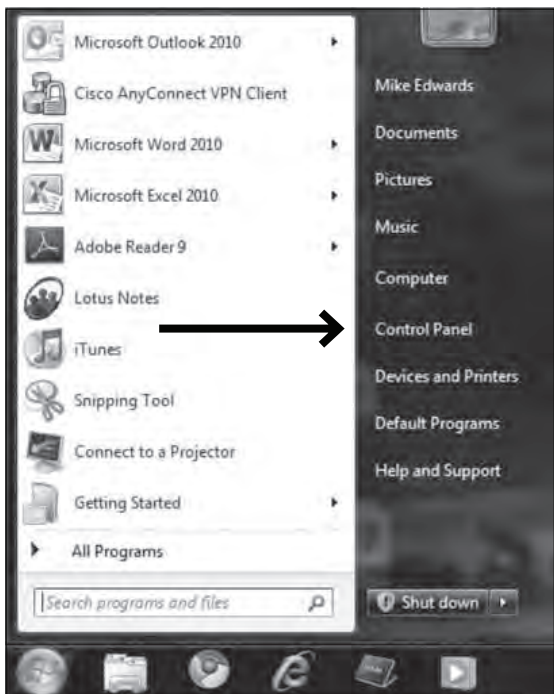


5. Select the Recording tab. Make sure that the **Pyle USB Microphone** is set as the default recording device. (You should see a green check mark beside the USB microphone icon.)

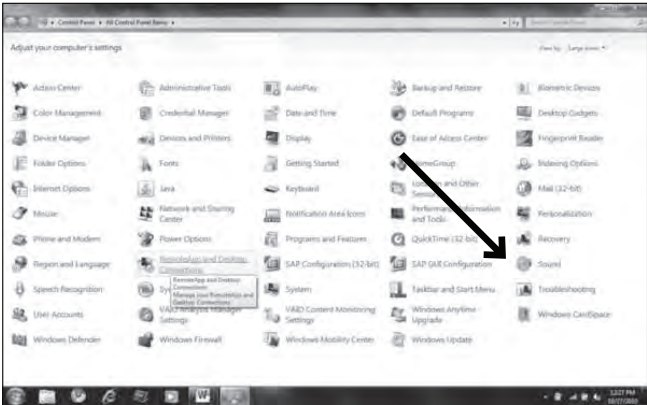
Your preferences are now set to use the **Pyle USB Microphone** with Windows Vista with the Pyle USB Microphone program of your choice.

PRELIMINARY SETUP WITH WINDOWS 7/10

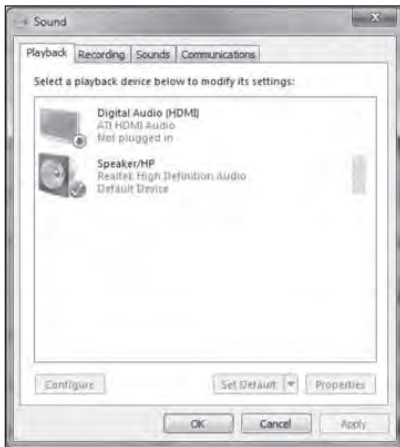
1. Plug the free end of the provided USB cable into the USB port on your computer. Your computer will automatically recognize the USB device.
2. **START menu » Control Panel » Sound**
To select the **Pyle USB Microphone** as your default recording device, begin at your START menu. Select Control Panel.



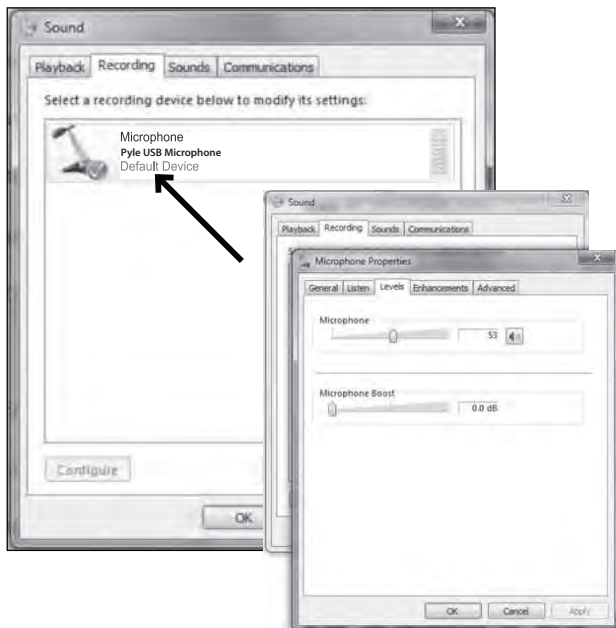
3. Select Sound.



4. The following screen will pop up.



5. Select the Recording tab, and choose **Pyle USB Microphone** as the default device.
6. Double click on the **Pyle USB Microphone** icon to open the Microphone Properties window. Select the levels tab to adjust microphone level (loudness). You may need to come back to this window to readjust the level after you begin recording.



Your preferences are now set to use the **Pyle USB Microphone** with Windows 7/10 with the recording program of your choice.

ADDITIONAL INFORMATION

You have many choices in recording software. **Audacity**, is available for free online and is a widely used software program that provides basic recording software. Correct adjustment of microphone levels is important for optimum performance. Ideally, the microphone level should be as high as possible without overloading the input of your computer. If you hear distortion, or if your recording program shows levels that are consistently overloaded (at peak levels), turn the microphone volume (or level) down, either through your control panel (or systems preferences) settings, or through your recording software. If your recording program shows insufficient level, you can increase the microphone gain either from the control panel (or system preferences) settings or through your recording program.

It is important to position the microphone directly in line (on axis) with the person speaking/singing or the instrument (or other sound source) to achieve the best frequency response of the microphone. This requires the user to speak into the microphone from the Cardioid symbol side (or blue light) positioned towards the mouth. As this microphone is directional. The distance from the mouth should be about 1-inch, or 10- 40mm for optimal recording. For use in speaking/singing applications, the ideal placement for the microphone is directly in front of the person speaking/singing. The same placement is optimal when an instrument is miked, such as an acoustic guitar, drums or piano. Experiment with different mic placements to find the best sound for your particular setup.

Features:

- Pro Audio Broadcasting Desktop Microphone
- Simple USB 'Plug-and-Play' Operation
- Connects to Your Computer for Hassle-Free Sound Control
- Lab Tested for Stage & Studio-Quality Performance
- Portable and Stable Design
- Low Self-noise Function
- Includes Good Cardioid Polar Pickup Pattern
- Efficiently Reduce the Plosive, Wind, Interference, Saliva Spraying
- Adjustable Height
- Easy to Connect with Computer, No Need Extra Driver Software
- Perfect Use for Studios, Recording, Broadcasting, Podcasts, Game Streaming, Vocal Performances, Voice-overs and Instruments
- Universal Computer Compatibility: Works with PC, Mac, Linux
- For Home, Office & Business Use

What's in the Box:

- USB Microphone
- Tripod Stand
- Microphone Shock Mount
- USB Cable

Technical Specs:

- Pick up Pattern: Cardioid
- Microphone Type: Back Electret Condenser
- Connection Interface: USB 2.0 Powered
- Frequency Response: 30-18,000Hz
- Sensitivity: -36dB +/-2 dB (0dB=1V/Pa at 1KHz)
- Max SPL: 96 dB
- Sampling Rate: 16 bit/48KHz
- Windows XP, Vista, 7,8, 10, Mac OS X, Linux
- USB Cable Length: 5.90 ft.
- Microphone-core: Dia. 0.55" (14mm) Condenser
- S/N Ratio: 66dB
- Mic Construction Material: Engineered Metal Alloy, Metal Iron
- Power Output: USB Powered, 5 V DC 100 mA
- Microphone Dimensions (L x W x H): 1.9" x 1.9" x 6.1"-inches

SYSTEM REQUIREMENTS

Macintosh: Mac OS X: USB 1.0 or 2.0: 64MB RAM (minimum)

Windows: XP/Vista/7/10: USB 1.0 or 2.0: 64MB RAM (minimum)

PYLE

PyleUSA.com



VISIT US ONLINE:

Have a question?

Need service or repair?

Want to leave a comment?

PyleUSA.com/ContactUs

PYLE

Questions? Issues?

We are here to help!

Phone: (1) 718-535-1800

Email: support@pyleusa.com