

# PYLE

PyleUSA.com



*PDMIUSBLP14*

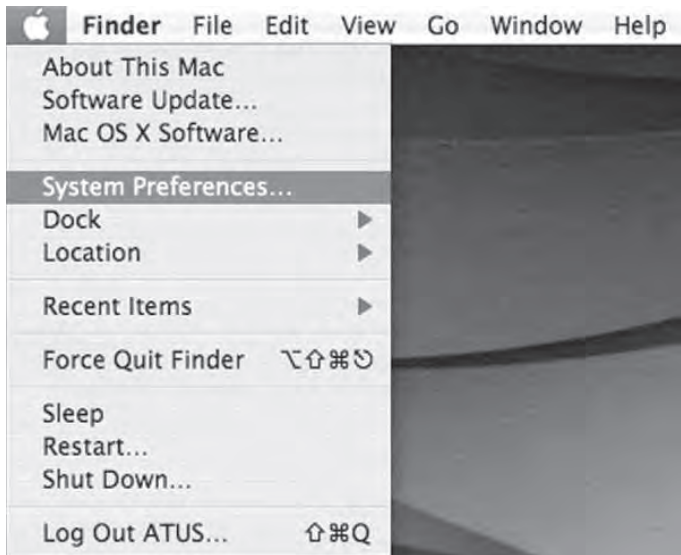
**Compact USB Lapel Microphone**

Pure Copper Mic Shield with Smart Mute Switch

***User Manual***

## PRELIMINARY SETUP WITH MAC OS X

1. Plug the free end of the provided USB cable into the USB port on your computer. Your computer will automatically recognize the USB device.
2. To select the **Pyle USB Microphone** as your audio input first open your System Preferences.



### Note:

Many recording software programs are available online. **Audacity** is a widely used free software for recording and editing sounds.

3. Next, click Sound to display the **Sound Preference** panel.



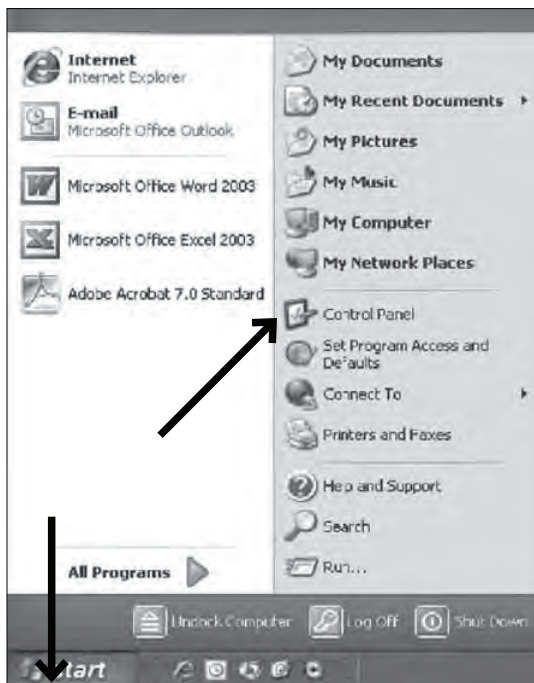
4. Click the input tab and select the **Pyle USB Microphone** as the device for sound input.



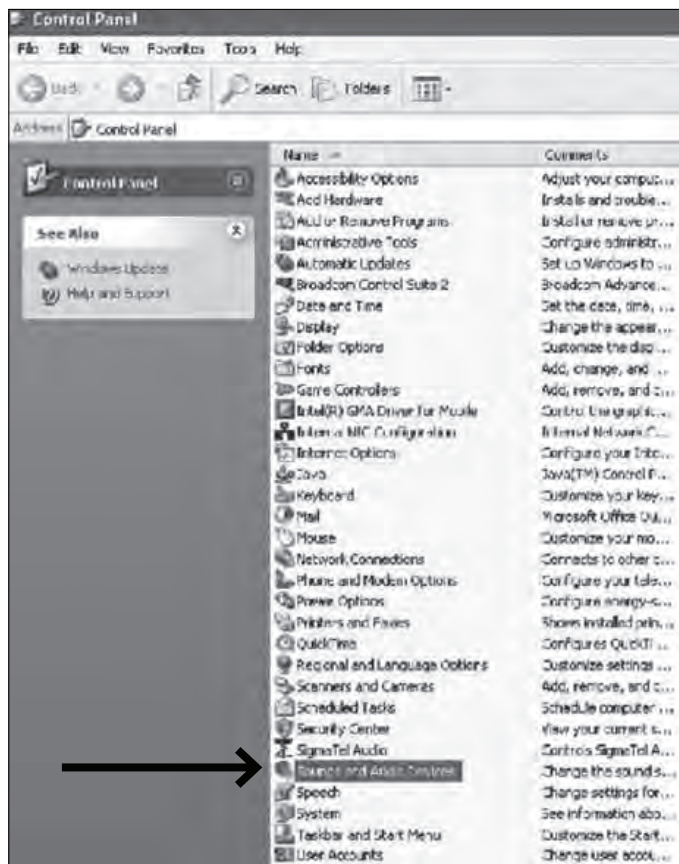
Your preferences are now set to use the **Pyle USB Microphone** on your Mac with the recording program of your choice.

## PRELIMINARY SETUP WITH WINDOWS XP

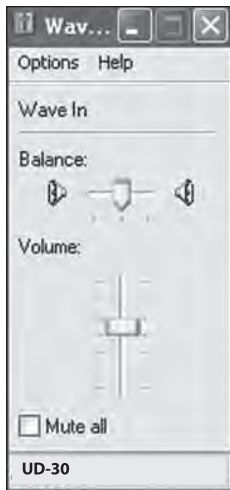
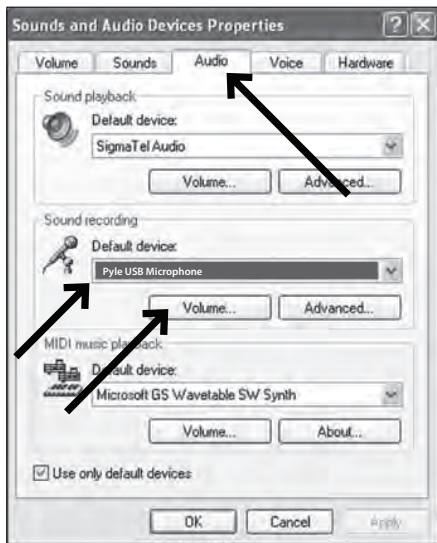
1. Plug the free end of the provided USB cable into the USB port on your computer. Your computer will automatically recognize the USB device.
2. To select the **Pyle USB Microphone** as your default recording device, begin at your **START** menu.
3. Select Control Panel.



## 4. Select Sounds and Audio Devices.

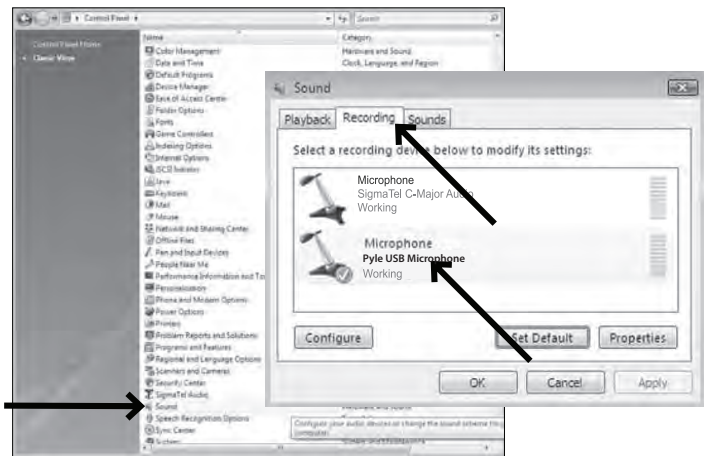


- Adjust computer volume by clicking on the Volume button beneath the Sound recording default device.
- Through the Wave In window, you can set the computer volume or mute the microphone.
- Your preferences are now set to use the **Pyle USB Microphone** with the Windows and with the recording program of your choice.



## PRELIMINARY SETUP WITH WINDOWS VISTA

1. Plug the free end of the provided USB cable into the USB port on your computer. Your computer will automatically recognize the USB device.
2. **START** menu > **Control Panel** » **Sound**  
To select the **Pyle USB Microphone** as your default recording device, begin at your **START** menu. Select Control Panel.
3. Select (double-click) Sound.

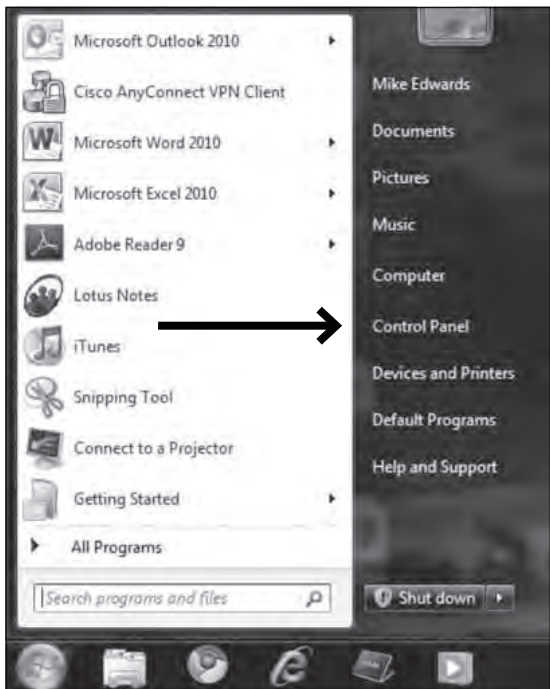


5. Select the Recording tab. Make sure that the **Pyle USB Microphone** is set as the default recording device. (You should see a green check mark beside the USB microphone icon.)

Your preferences are now set to use the **Pyle USB Microphone** with Windows Vista with the recording program of your choice.

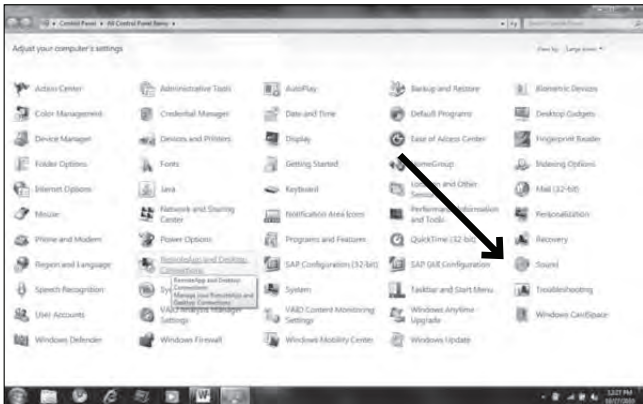
## PRELIMINARY SETUP WITH WINDOWS 7/10

1. Plug the free end of the provided USB cable into the USB port on your computer. Your computer will automatically recognize the USB device.
2. **START menu » Control Panel » Sound**  
To select the **Pyle USB Microphone** as your default recording device, begin at your START menu. Select Control Panel.





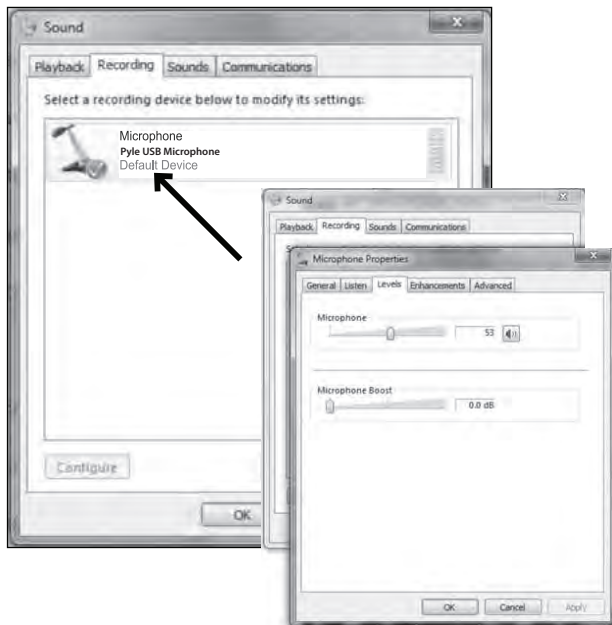
### 3. Select Sound.



### 4. The following screen will pop up.



5. Select the Recording tab, and choose **Pyle USB Microphone** as the default device.
6. Double click on the **Pyle USB Microphone** icon to open the Microphone Properties window. Select the levels tab to adjust microphone level (loudness). You may need to come back to this window to readjust the level after you begin recording.



Your preferences are now set to use the **Pyle USB Microphone** with Windows 7/10 with the recording program of your choice.



**Press button  
to mute**

## **SYSTEM REQUIREMENTS**

**Macintosh:** Mac OS X: USB 1.0 or 2.0: 64MB RAM (minimum)

**Windows:** XP/Vista/7/10: USB 1.0 or 2.0: 64MB RAM (minimum)

## **ADDITIONAL INFORMATION**

You have many choices in recording software. **Audacity**, is available for free online and is a widely used software program that provides basic recording software. Correct adjustment of microphone levels is important for optimum performance. Ideally, the microphone level should be as high as possible without overloading the input of your computer. If you hear distortion, or if your recording program shows levels that are consistently overloaded (at peak levels), turn the microphone volume (or level) down, either through your control panel (or systems preferences) settings, or through your recording software. If your recording program shows insufficient level, you can increase the microphone gain either from the control panel (or system preferences) settings or through your recording program.

It is important to position the microphone directly in line (on axis) with the person speaking/singing or the instrument (or other sound source) to achieve the best frequency response of the microphone. This requires the user to speak into the microphone positioned towards the mouth. As this microphone is directional. The distance from the mouth should be about 1-inch, or 10-40mm for optimal recording. For use in speaking/singing applications, the ideal placement for the microphone is directly in front of the person speaking/singing. The same placement is optimal when an instrument is miked, such as an acoustic guitar, drums or piano. Experiment with different mic placements to find the best sound for your particular setup.

## **Features:**

- Super Compact Size
- Selected Japan Capsule
- Pure Cooper Microphone Shielding
- Extra Long High-Quality Flexible Wire
- One Button Mute Switch
- Clear and Quality Sound
- Strong and Sturdy Metal USB Type and Tight Clip
- Flexible and Durable Cable for Multiple Application
- High-quality, Plug and Play Microphone for PC and MAC
- Perfect for Capturing Interviews, Conducting Podcasts, Creating Online Videos and more

## **What's in the Box:**

- USB Lapel Microphone
- Cable Wrap
- Foam Filter
- USB A to C Adapter
- Leather Pouch

## **Technical Specs:**

- Technical Specs:
- Construction Material: Copper
- Pick up Pattern: Omni-directional
- Frequency Response: 30-18,000Hz
- Sensitivity: -36dB +/- 3dB (0dB=1V/Pa at 1KHz)
- THD Ratio: 0.40%
- Signal to Noise Ratio: 53.42 dB
- Supports Up to 32-bits Data Length and 384k Sampling Rate
- Connector: Standard USB type A ( Plug-and-play for PC/MAC)
- USB Cable Length: 6.5 ft.

# PYLE

PyleUSA.com



**VISIT US ONLINE:**

*Have a question?*

*Need service or repair?*

*Want to leave a comment?*

[PyleUSA.com/ContactUs](http://PyleUSA.com/ContactUs)

PYLE

***Questions? Issues?***

We are here to help!

Phone: (1) 718-535-1800

Email: [support@pyleusa.com](mailto:support@pyleusa.com)