

The PiCKiT Smart Printer



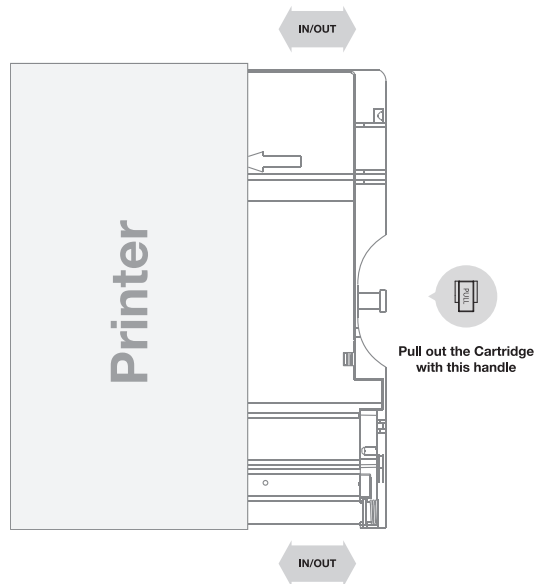
User Manual

Models: PiCKiT20, PiCKiT21RD, PiCKiT22BK



Step 1 Before Start

www.PyleUSA.com



IN/OUT

Follow the arrow to insert the cartridge

Step 2 App Installation

www.PyleUSA.com

1. Android Device

A TYPE *NFC Support Android Device ONLY

1. Turn NFC on in your smart phone.
2. Tap the phone on the top of Pickit printer.
Google Play Store app installation page will show up.
3. Install the app into your smartphone from the store.



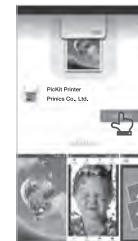
A TYPE

B TYPE

1. Go to Google Play Store in your smartphone.
2. Search "Pickit Printer"
3. Install "Pickit Printer" into your smartphone.

Step 2 App Installation

www.PyleUSA.com



B TYPE

2. Apple Device

1. Go to Appstore in your iPhone, iPod touch or iPad.
2. Search "Pickit Printer"
3. Install "Pickit Printer" Application into your device.



Step 3 Connecting

1. WiFi Access Point (AP) *Apple and Android Devices.

1. Turn WiFi on in your smartphone.

2. Go to WiFi setting and find "Direct-Cube-XXXX".

* Printer names are vary and 4 digits. The 4 digits are combination of number and alphabet.

3. Password is "12345678".

4. Select the WiFi network to connect the printer.

2. NFC and WiFi Direct *NFC, WiFi Direct support devices ONLY

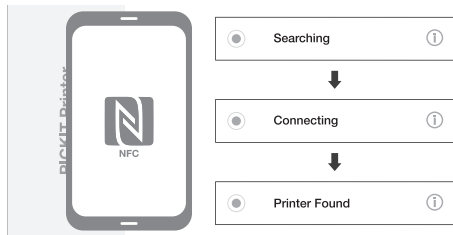
1. Turn NFC and WiFi on in your smartphone.

*Set the NFC setting as P2P mode.

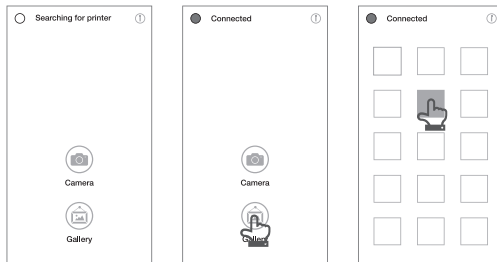
2. Tap your device on the center of the printer where the NFC mark is.

3. Within 20 seconds, the app will automatically connect to WiFi Direct

4. When the printer is connected to WiFi Direct, green mark will be shown in the app.



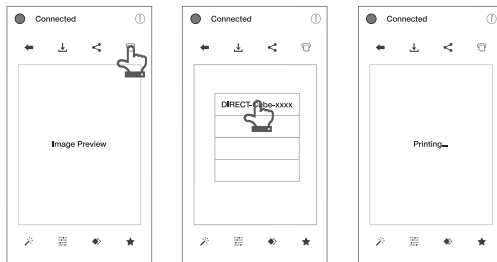
Step 4 Printing in the App



App Launch

Select Choose Photo

Choose Photo



Select Print

Select Printer

Printing

* In case of multiple printers are available

Power and active status

Status	Icon
Power ON	White
Power OFF (2sec)	Off
Printing	White Flickering
F/W Upgrade	Pink Flickering
No Cartridge	Red Flickering
Error (Paper Jam, etc.)	Red Flickering
Waiting/Cooling	White

Battery Status

Status	Icon
Charging	Red
Charging Complete	Green

Troubleshooting

Symptom	CAUSE / SOLUTION
Paper Jam	Power OFF and Power ON again. Paper will be automatically ejected. If not, please contact customer service.
Image quality is not good	Print quality could be less if your photo source has low resolution. Over 1280 x 2448 pixel is recommended for best image quality
Printer is not responding	Press Reset button with sharp tool like pin.

Step 6 Note and FCC

Note

- Photo Paper will go in and out 4 times (YMCO, Yellow. Magenta. Cyan, Overcoating). Do NOT touch the paper during printing process for best image quality.
- Do not pull paper out by force during printing.
- Do not place an object in front of the paper exit slot.
- Use the latest Pickit application for law print quality. Check the latest app version from Google Play Store and Apple Appstore.
- Printer has Built-In Battery. Charge the printer before using.
- Handle with care during charging to prevent electric shock.
- Do not disassemble or deform.
- Avoid too high or low temperature or humidity.
- If NFC tag is not read, check its position on the printer and smartphone. Then try again.
- The higher resolution the image has, the higher quality the printed photo has. Recommended image size is 1280 * 2448 pixel.
- Operating Temperature: 32~104°F

FCC (Federal Communications Commission)

This device complies with part 15 of the FCC Rules. Operation is subject to the following two conditions:

1. This device may not cause harmful interference, and
2. This device must accept any Interference received, including Interference that may cause undesired operation.

CAUTION: Any changes or modifications to the equipment not expressly approved by the party responsible for compliance could void user's authority to operate the equipment.

This device (FCCID: PO5M1) complies with FCC SAR requirement.



VISIT US ONLINE:
Have a question?
Need service or repair?
Want to leave a comment?
PyleUSA.com/ContactUs

PYLE