

**Indoor Wireless/Wired HD P2P Network Camera Pro.
(with H.264 image compression)**



Instruction Manual

PIPCAMHD22 Mobile Quick Start Guide
Find FAQs including setup video and support online at
<http://www.pipcamwireless.com>

- 1) Plug your camera into power in the same room as the wireless router in your home**
-wait 2-3 min for boot up



- 2) Check your camera is blinking the red LED.**

-This indicates the camera is ready to pair with 1 key setup



If you don't see the flashing red light - use a pin at the back to hold in the reset switch for 10-20 seconds until the camera beeps and then boots up with the flashing red LED

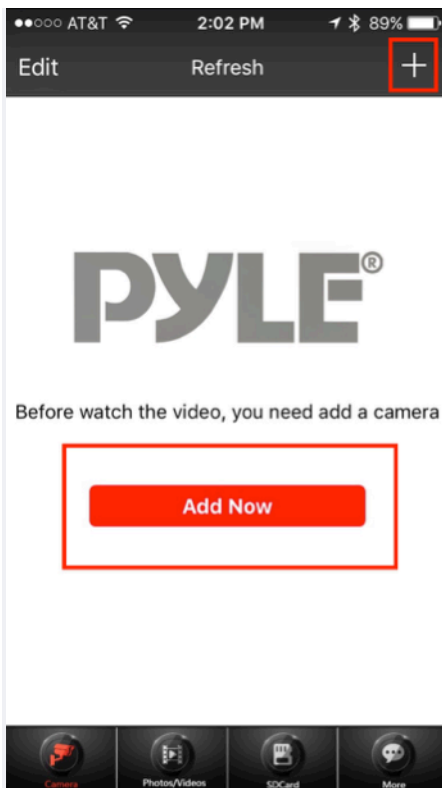


3) Check your phone's WiFi setting is currently connected to the home network you want to set up the camera with

4) Search for and Download our mobile app - "Pyle IP Pro" in the Apple or Google Play store.



5) Open up the Pyle IP Pro app and select "add camera"



6) Select the option for "1 Key Config"



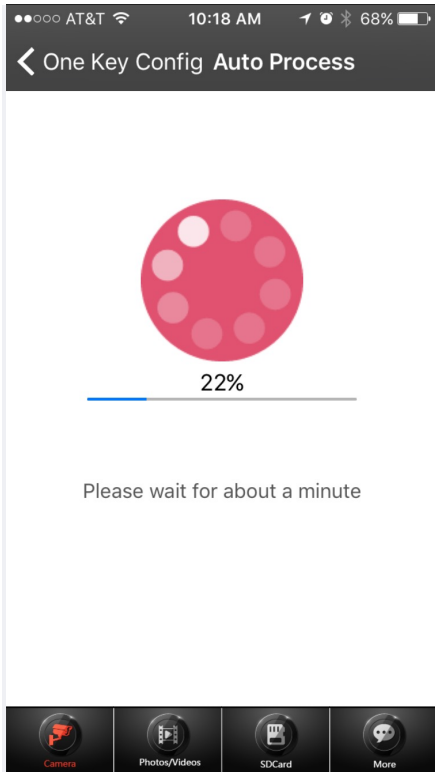
7) Enter the password for your home network

NOTE: Passwords are case sensitive.

-The 1 key config will continue to load even if you input the incorrect password for your home network

-Verify you are entering the home network password correctly if you have any issues.

8) Allow the configuration wizard to load



9) Wait to hear the camera chirp indicating the connection is in progress.

You will see the camera flashing LED change from flashing red to solid blue at this time.



If you have trouble with this skip to the WPS connect section below

10) Allow the configuration wizard to complete. The app will then ask you to change your camera password.

-Select yes and enter your own camera password

11) Now navigate to the “Camera” tab to see a list of all of your cameras.

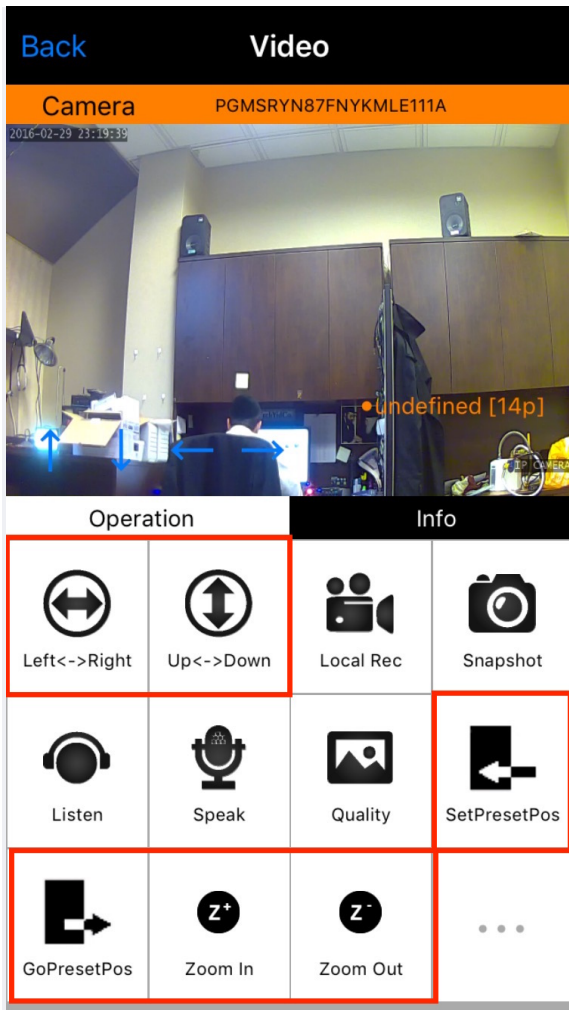
Select the newly added camera to check you can see the video feed

Please note that not all the features shown in the app are available with PIPCAMHD22

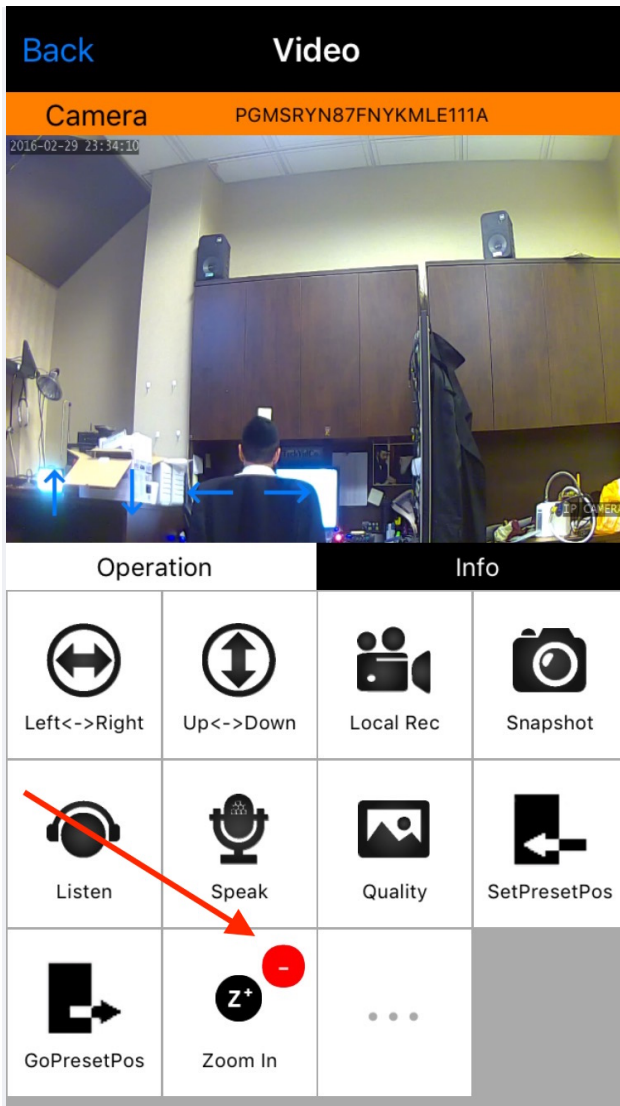
This models does not support

-PTZ

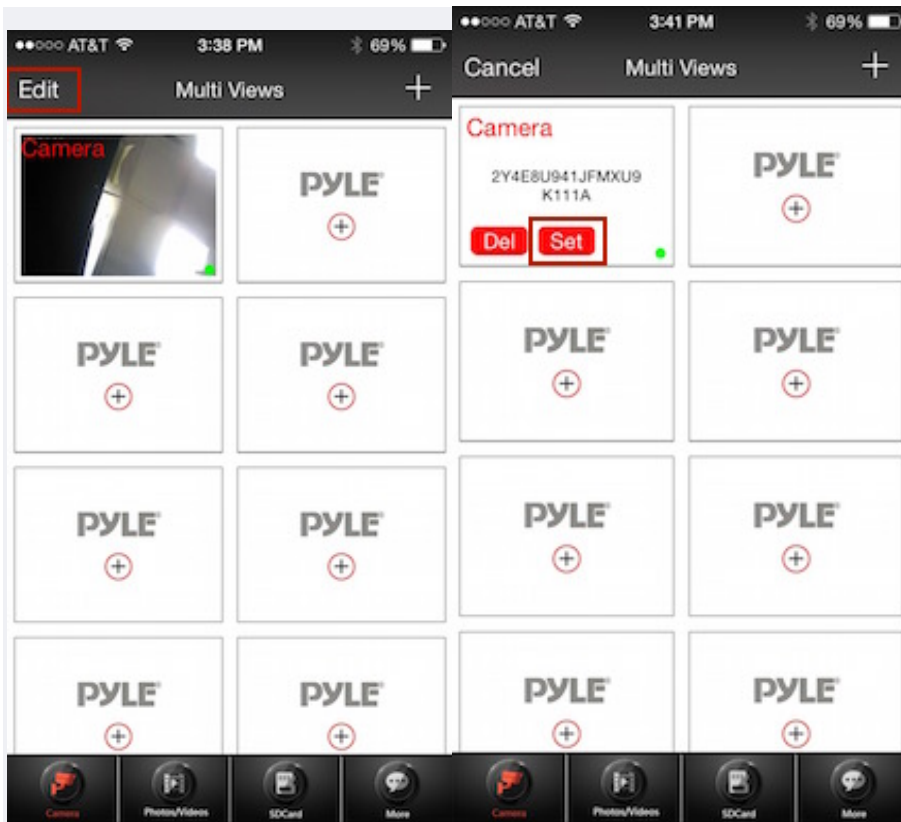
-Optical zoom



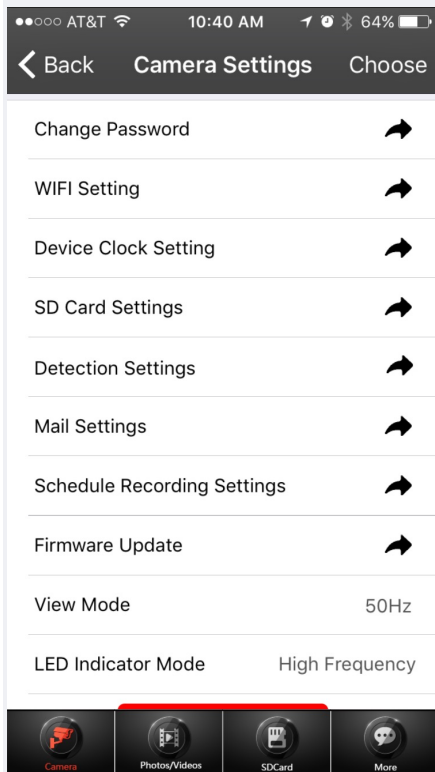
You can hide the options by pressing and holding each icon then tapping the delete key



13) To access and edit camera settings...
Select "Edit" in the top left corner, then "set" on your camera's entry.



Here you will find a full list of available settings



WPS Setup – No App Required

- 1) Plug your camera into power in the same room as the wireless router in your home
-wait 2-3 min for boot up



- 2) use a pin at the back to hold in the reset switch for 10-20 seconds until the camera beeps and then boots up with the flashing red LED



3) Do a short press (1-3 seconds) on the hardware reset switch

4) The camera LED indicator will switch from red to flashing blue indicating it is in WPS pair mode

NOTE: If you hear the beep indication and see the camera IR lights flash - the full reset has been triggered and you will need to start again at step 2



5) Press the WPS button at the back of your wireless router



6) Wait 2-3 minutes for the camera to detect the router

-The camera will chirp with a sound and then the flashing blue light will now be solid

CONTENTS

1. INTRODUCTION	4
1.1 Features	5
1.2 Packing List	5
1.3 Product Views.....	6
1.4 PC System Requirements	6
1.5 Hardware Installation	6
2. INSTALLATION AND SETTINGS	8
2.1 Network Connection	8
2.2 Browser Settings (For IE only)	9
2.3 UPnP Service	10
2.4 IPCam IP Address Search Tool (for IE browser only).....	11
2.5 Install the OCX ActiveX (For IE only).....	12
3. SOFTWARE OPERATION	14
3.3 Functions	16
3.4 For Live Video (for IE browser)	17
4. SETTINGS	24
4.1 Status---Device Info.	24
4.2 Setup.....	25
4.2.2 Multi-Device Settings	25
4.2.3 Date & Time	26
4.2.4 Audio Settings	26
4.3 Network Settings	27
4.3.1 IP	27
4.3.2 Wireless Settings	27
4.3.3 Upnp Settings.....	28
4.3.4 DDNS Settings	29
4.3.5 P2P Settings	29
4.3.6 FTP Settings	29
4.3.7 E-mail(SMTP) Settings.....	30
4.4 Video Info.	31
4.5 Alarm Settings.....	32
4.5.1 Motion Detection	32
4.5.2 Alarm Settings.....	33
4.6 Record.....	34
4.6.2 SD Card info.....	35
4.7 System	35
4.7.1 Log	35
4.7.2 Auto Maintain	36

4.7.3 System	36
5. PLAYBACK for IE browser only	38
6. FREQUENTLY ASKED QUESTIONS	40
7. SPECIFICATIONS	45
8. OBTAINING TECHNICAL SUPPORT	46

1. INTRODUCTION

This user manual will show the details to set up your camera with your computer; if you are viewing with a Smartphone, pls check Quick Start Guide, as it is very easy to set up.

Important Note: You need to use smart phone to set camera connecting to wifi, so that you can get IP in search tool, and login via computer. Smart phone settings details see QSG.

IMPORTANT NOTICE

The various screens throughout this owner's manual will look different depending on the browser you use. Full functionality is available when using Internet Explorer (IE) with ActiveX (OCX) installed. Limited functionality is available with other browsers, such as Safari, Chrome, and Firefox.

Please Read this manual carefully, according to the browser you are using.

This is an integrated wireless IP Camera. It combines a high quality digital Video Camera with network connectivity and a powerful web server to bring clear pictures to your Desktop from anywhere on your local network or over the Internet.

The main function of the camera is to transmit remote video over IP network. The high quality video image can be transmitted with 30fps speed on the LAN/WAN by using H.264, MJPEG compression technology.

It is based on the TCP/IP standard, build-in WEB server which supports Internet Explorer. Therefore the management and maintenance of your camera becomes simple by using the network to achieve the remote configuration, start-up and to upgrade firmware.

You can use your IP Camera to monitor your home or your office. Also, controlling and managing images are simple by visiting the web site.

1.1 Features

- ☆ Powerful high-speed video protocol processor
- ☆ High-sensitivity 1/4" CMOS sensor
- ☆ Picture total 1000K pixels (1megapixel)
- ☆ Optimized H.264 MJPEG video compression for transmission
- ☆ Multi-level user management and passwords definition
- ☆ Embedded Web Server for users to visit by IE
- ☆ Supports wireless network (WI-FI/802.11/b/g/n)
- ☆ Supports Dynamic IP (DDNS) and UPNP LAN and Internet (ADSL, Cable Modem)
- ☆ Gives an alarm in case of motion detection
- ☆ Supports image snapshot
- ☆ Supports multiple protocols : TCP/IP HTTP DNS DHCP PPPoE SMTP FTP SSL TFTP NTP
ARP/RARP NFS RTSP RTP RTCP.
- ☆ Supports WEP/WPA/WPA2 encryption
- ☆ Supports IE, Firefox, Safari, and Google chrome browsers

1.2 Packing List

- IP Camera
- Wi-Fi Antenna
- Quick Setup Guide
- DC Power Supply
- CD
- Network Cable

1.3 Product Views

1.3.1 Rear View



Wireless : Built-in WI-FI Antenna.

Infrared LEDs: infrared LEDs with 8 meters night vision.

LENS: Magepixel lens.

Network Light: The green LED will be on when the network is connected, the yellow LED will blink when data is transferred.

Reset: If you press and hold the RESET button for about 10 seconds, all the parameters will be set back to the factory default settings. (Please keep the power on when doing a RESET).

1.4 PC System Requirements

System configuration requirements:

CPU: 2.06 GHZ or above.

Memory: 256M or above.

Network Card: 10M or above.

Display Card: 64M or above memory.

Recommended Operating system: Windows XP, Windows Vista, Windows 7.

1.5 Hardware Installation

Follow the steps below to set up your camera hardware.

1. Plug the power adaptor into the camera and into an AC outlet.
 2. Use your smartphone to search and connect the Camera SSID wifi signal, and set camera connect to the router wifi via App.
 4. It takes approx 30 seconds to boot up the camera, then you will find the IP address from “IP Camera Tool” (Figure 2.1.5).
 5. When the power is on and the network cable is connected, the green LED on the rear panel will stay on.
- The Green LED will keep flashing, and the Indicator LED on the front of the camera will flash.



2. INSTALLATION AND SETTINGS

System Requirement:

Operating System: Windows 2000 / XP / Vista / 7

Network Protocol: TCP/IP

Network Structure: Applies to all network connections 10/100M LAN platform

Browser: Internet Explorer 6.0 or above. Firefox, Google, Safari, or Chrome.

2.1 Network Connection

Intranet and Extranet Connection Reference:

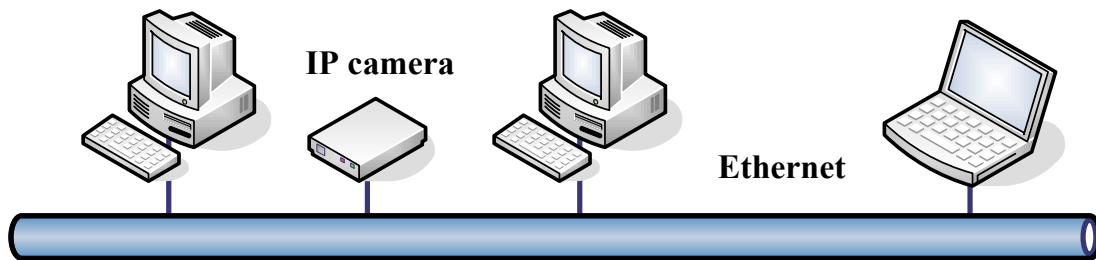
Extranet means public IP (i.e. The Internet), Intranet means private IP. If your IP belongs to the follow range, then it's a private IP :

Category A: 10.0.0.0 - 10.255.255.255

Category B: 172.16.0.0 - 172.31.255.255

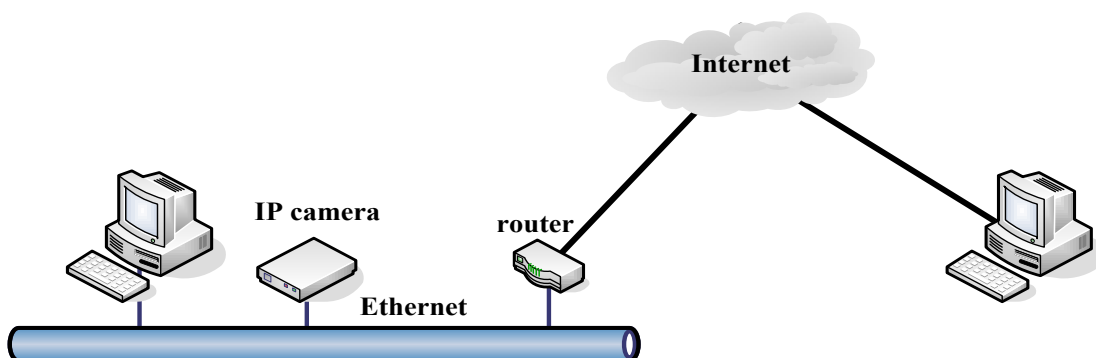
Category C: 192.168.0.0 - 192.168.255.255

Intranet Connection: The IP camera and your computer (device) should be under the same network environment, and both of the IPs should be under the same subnet, pictured as below:

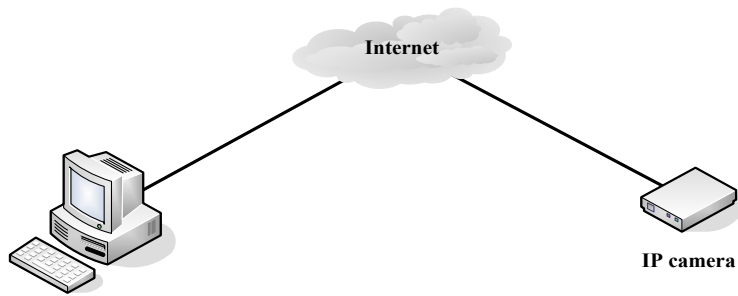


Extranet Connection: there are 2 ways as below:

(1). IP camera connects to the Internet via a router, here camera's IP is a private IP, client needs to connect to the IP camera through a router, with port forwarding to be connected correctly, as below:



(2). IP camera connects to the Internet directly, if it's a fixed IP provided by your ISP, just input it. If it's a floating IP, then input the account and password provided by your ISP to dial-up connection.



2.2 Browser Settings (For IE only)

OCX will be downloaded automatically when you login to the IP Camera, but you might have to set the IE browser to enable the OCX to be downloaded automatically after signing in. Steps as below:

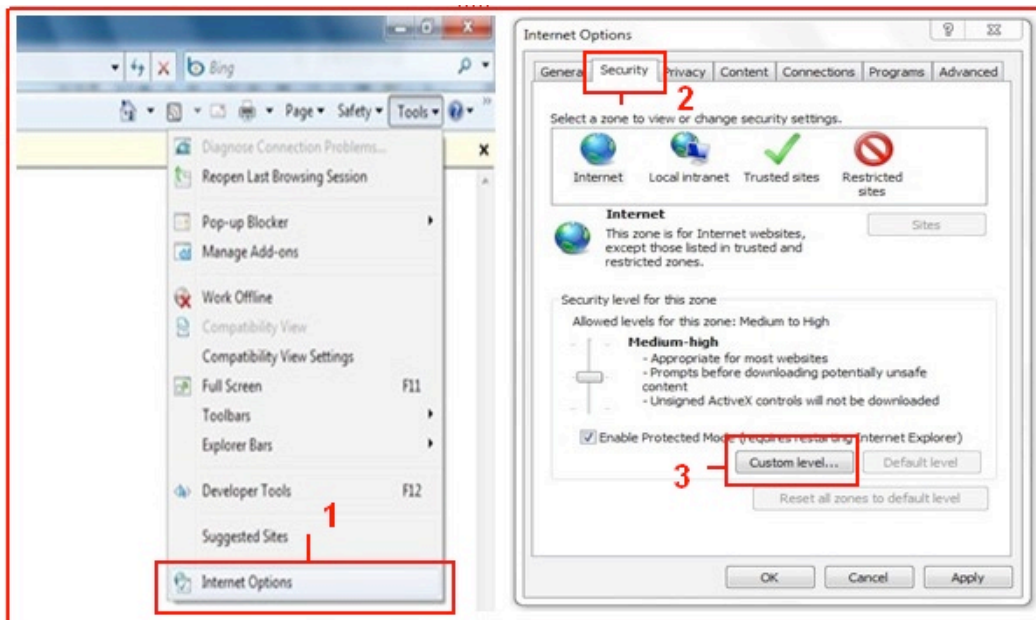
1. Close the firewall of your computer.
2. Change the ActiveX settings, "IE" browser > "Tool" > "Internet Options" > "Security" > "Custom Level" > "ActiveX control and Plug-ins", all the ActiveX options set to be "Enable":

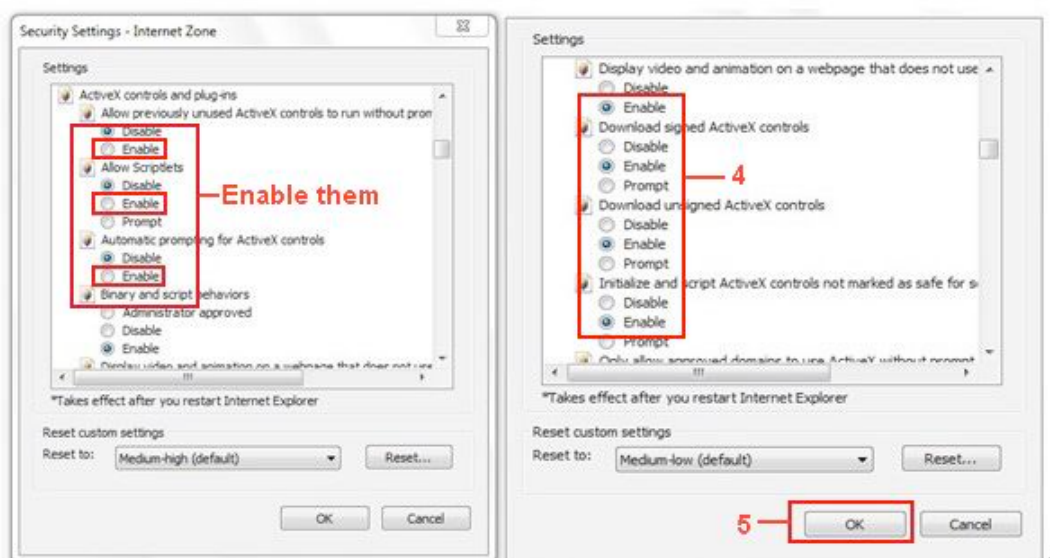
Especially:

Enable: Download unsigned ActiveX controls

Enable: Initialize and script ActiveX controls not marked as safe

Enable: Run ActiveX controls and plug-ins





You can also click **“Start”** menu->**“Internet Explorer”**, and choose **“Internet attributes”**, or via **“Control Panel”** ->**“Internet Explorer”**, to access Security settings.

NOTE: Make sure that your firewall or anti-virus software doesn’t block the software or ActiveX. If you couldn’t see live video, please close your firewall or anti-virus software, and try again.

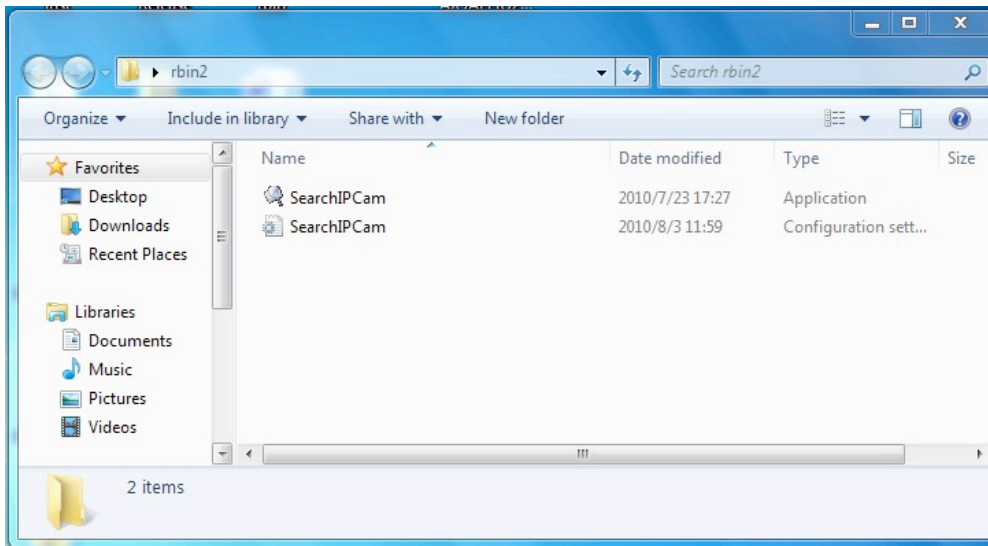
2.3 UPnP Service

UPnP could help you to find your camera’s IP more quickly. For Window XP, from **“Control Panel”** > **“Add or remove applications”** > **“Add or remove Windows component”** > **“Network service”** > **“Detailed data”** > **“UPnP users interface”**, the factory default settings is disabled. Enable it, then it can allow your operating system to support UPnP.

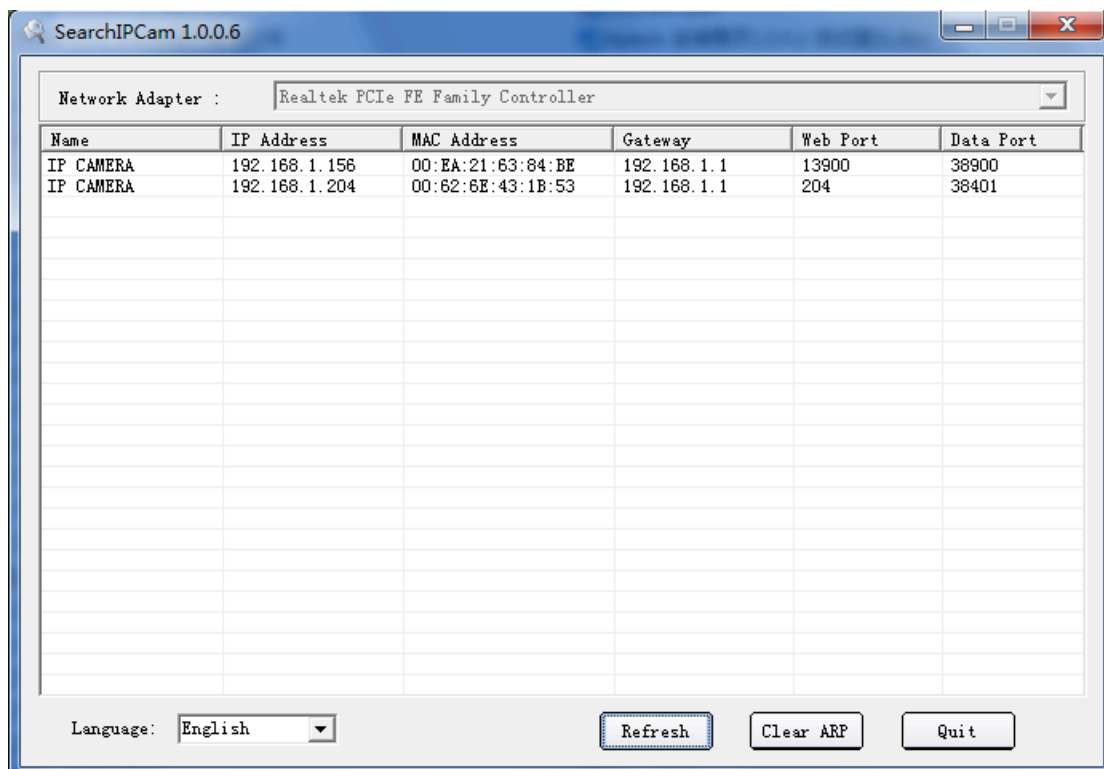
Alternatively, you can also click **“Start”** menu>**“Internet Explorer”**, and choose **“Internet attributes”**, or via **“Control Panel”** >**“Internet Explorer”**, enter to Security settings.

2.4 IPCam IP Address Search Tool (for IE browser only)

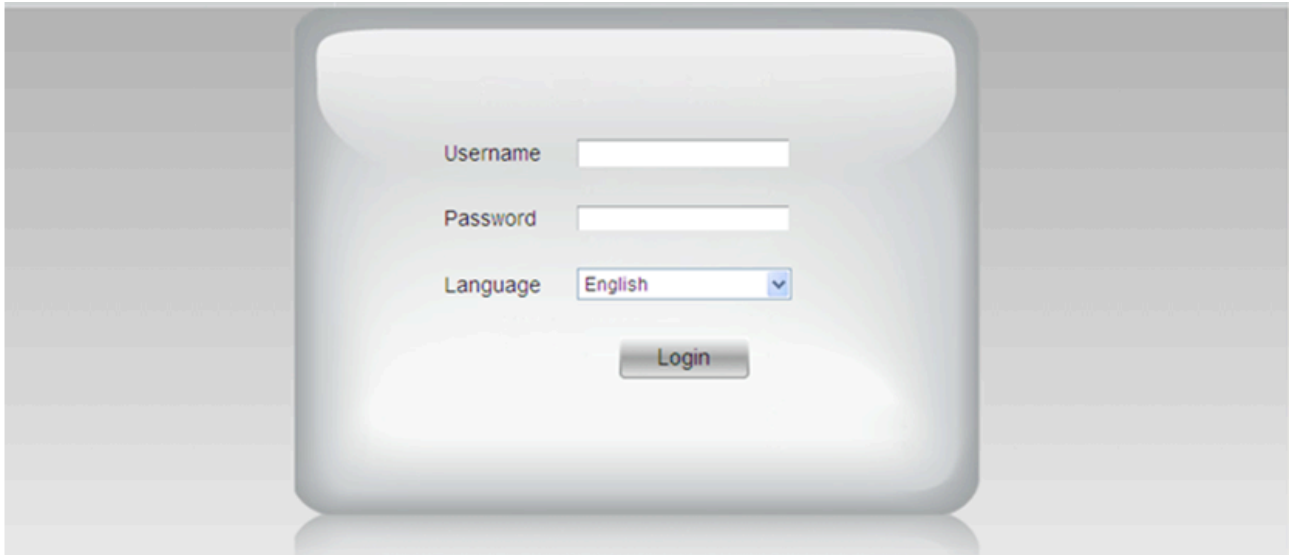
Step 1: Use tool “**SearchIPCam.exe**” to find IP address of LAN.



Step 2: Double click “**Search IPCam**” on your desktop, the camera’s IP & MAC address will be displayed. If you want to search again, click “**Search**”.



Step 3: Double-click the IP address of your camera to enter the login interface.(default user: admin; password: pylecam)



2.5 Install the OCX ActiveX (For IE only)

Install the OCX ActiveX for the first time login; You will get tips after enter user and password in login page.

Download the OCX file, then double click to install it automatically.

After OCX installed fully, then input the user and password to login the camera.

2.5.1 For other Browsers, e.g., Safari, Firefox, Chrome, there is no need to install the ActiveX control, see below:

User can input the ip address in the other browsers, select the view mode such as Server Puch; VLC, Quick time to view

If User can not find the correct IP address,The default IP address for each camera is 192.168.1.155. You can run the browser, and input the IP address directly into your browser to login to the camera.

NOTE: If the IP segment of the computer is different from the camera, such as 192.168.0.xx, please change the IP segment of the computer's to the same as camera's, such as 192.168.1.xx, then connect the IP Camera to the computer via network cable directly, run the browser, input the IP address and the login screen below will pop-up:



3. SOFTWARE OPERATION

3.1 Software operation for IE Browser

Choose your desired language, input correct user name and password, then click “Login”

User name: admin **Password:** pylecam,

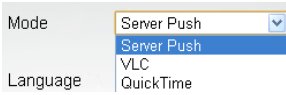


Language English  : Choose languages here

3.2 Software Operation For Chrome, Firefox, Safari:

Choose the suitable language, input correct user name and password, then click “Login”

User name: admin **Password:** pylecam



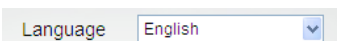
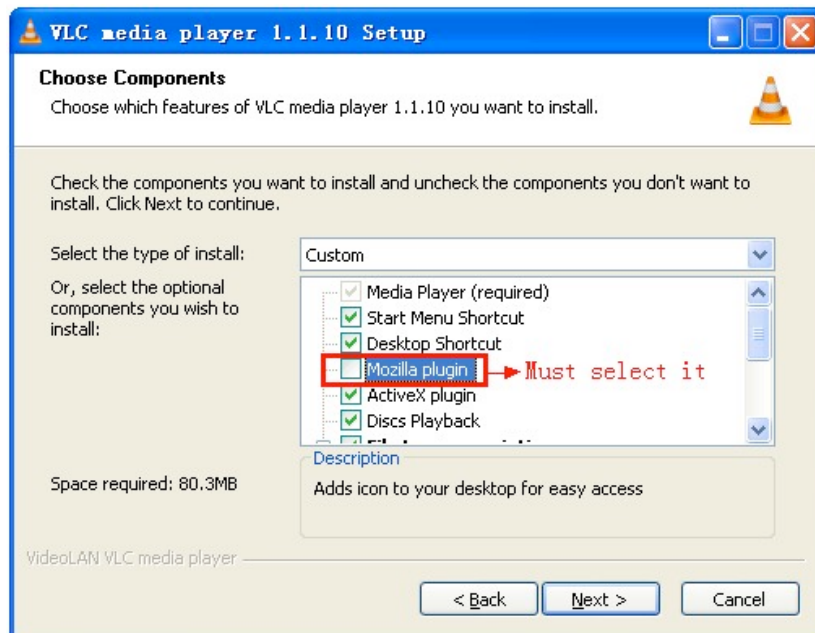
Choose the login mode.

QuickTime: Choose QuickTime, login to the camera directly. if there is prompt for installing the QuickTime player, just download and install it.

Sever Push: For Firefox, Chrome, or Safari browser.

VLC: If you use VLC, should download the VLC player first.

During the VLC installation, you must enable Mozilla plug-in as the picture shows below:



: Choose languages here



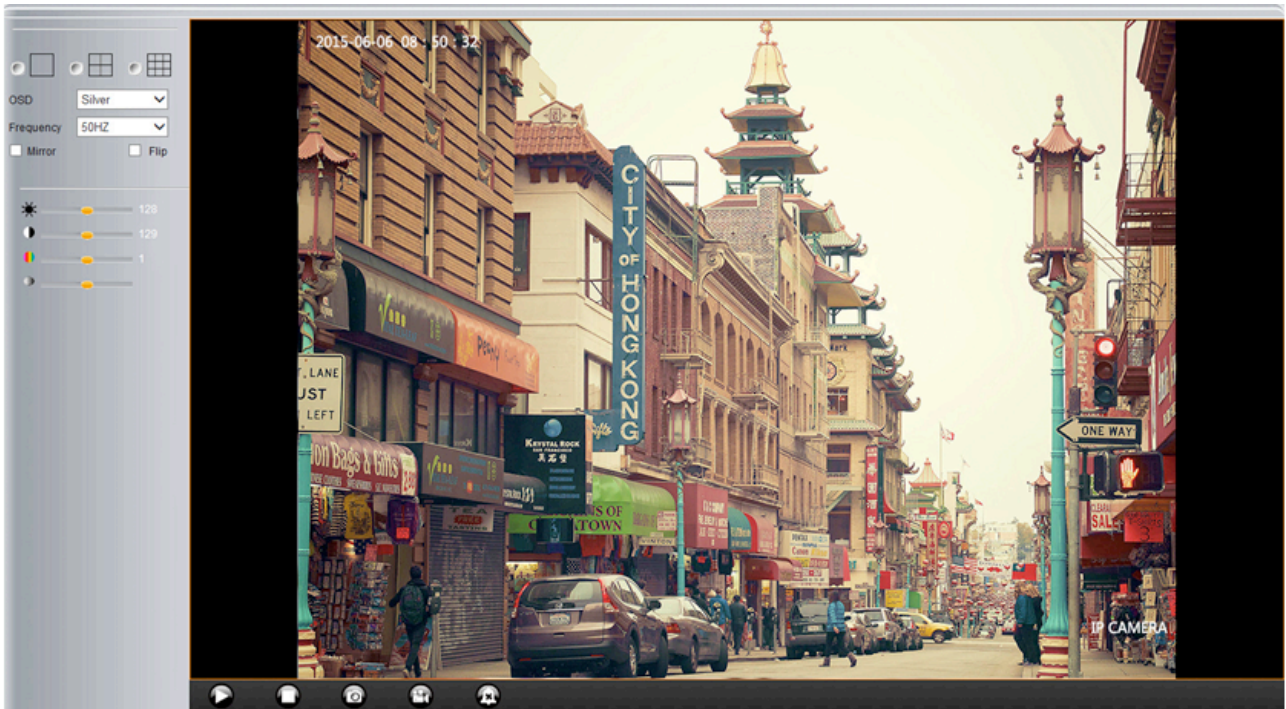





Figure 2.3

3.3 Functions

3.3.1 Three main functions (For IE):




-  **Live video:** Click it, back to live video window from “Playback” or “Params settings”
-  **Playback :** Click to query and playback the video files (**Details see 5 Playback**)
-  **Params Settings :** Setting the camera’s parameters (**Details see 4 Params settings**)

Log out: you will back to the login page

3.3.2 Two main functions (For Safari, Chrome, Firefox)



-  **Live video:** Click it, back to live video window from “Playback” or “Params settings”



Params Settings : Setting the camera's parameters (**Details see 4 Params settings**)

Log out: you will back to the login page

3.4 For Live Video (for IE browser)

3.4.1 Video Menu:



Play: Play the live video.



Stop: Stop the live video.



Snapshot: Click to take snapshot, the picture be saved in the PC to its appointed path as JPG format, and pop-up the prompt as below:(you can click "Save" to save the snapshot)



Record: Click to start record manually, the icon will change to green color.



Record file will be saved in the PC to its appointed path as AVI format. Click it again, will stop record function.



Audio: Click it to enable listen function, the icon will change to green color



can hear the live audio from camera via PC if audio is ON. Click it again, will stop listen function.



Talk: Click it to enable talk function, the icon will change to green color



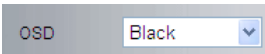
can talk between PC and camera if audio device connected. Click it again, will stop talk function.



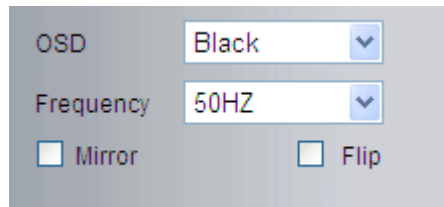
Clear Alarm: Click to stop the alarm manually when there is an alarm triggered, and pop-up prompt as below:



Fullscreen: Click to get fullscreen view;

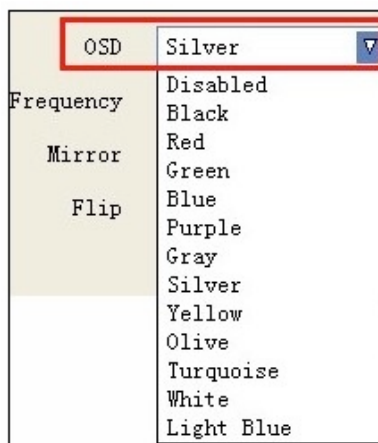


OSD Settings: Click it will pop-up the OSD settings interface, including OSD Color, Frequency, Image Mirror and Flip.



OSD: Means “On-Screen Display”

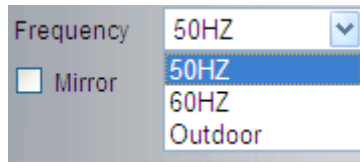
OSD Color: Including Disabled, Black, Red, Green, Blue, Purple, Gray, Silver, Yellow, Olive, Turquoise, White, Light Blue etc.



Frequency: Including 50HZ, 60HZ, Outdoor.

50HZ/60HZ for the users who use 50HZ/60HZ frequency, outdoor for the users who want to use this camera to monitor an outdoor environment (through a window).

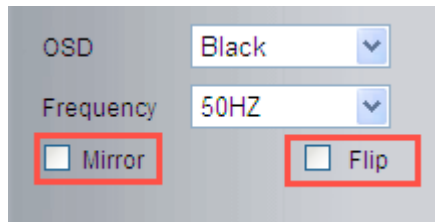
NOTE: The camera should only be used in a indoor environment



Mirror and Flip

Mirror: Select this checkbox to see a mirror image. Uncheck it to go back to normal.

Flip: Select this checkbox to flip the image upside down. Uncheck it to go back to normal.



NOTE: You can choose Mirror and Flip function if you set up the camera in a special position, upside down for example.

3.5 Live Video for Safari, Chrome, Firefox:

3.5.1 Play Menu For QuickTime Mode:



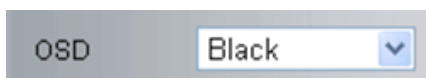
Capture: Click to take snapshot, the picture be saved in the PC to its appointed path as JPG format, will pop-up the snapshot, right click the picture to save it.



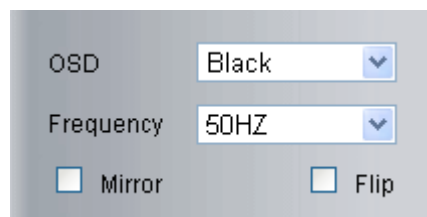
Fullscreen: Click to have fullscreen view;



: Click to exit fullscreen.

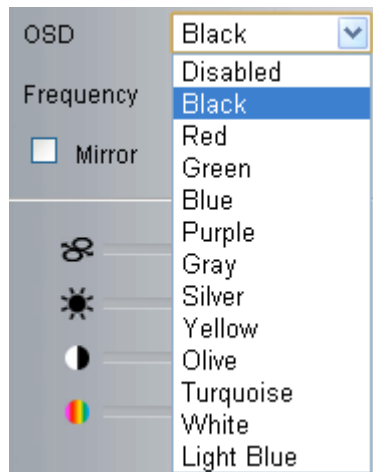


OSD Settings: Click it will pop-up the OSD settings interface, including OSD Color, Frequency, Image Mirror and Flip.



OSD: Means “On-Screen Display”

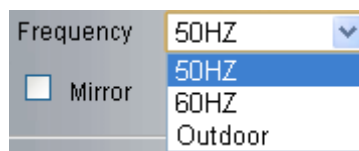
OSD Color: Including Disabled, Black, Red, Green, Blue, Purple, Gray, Silver, Yellow, Olive, Turquoise, White, Light Blue etc.



Frequency: Including 50HZ, 60HZ, Outdoor.

50HZ/60HZ for the users who use 50HZ/60HZ frequency, outdoor for the users who want to use this camera to monitor an outdoor environment (through a window).

NOTE: The camera should only be used in an indoor environment.



Mirror and Flip

Mirror: Select this checkbox to see a mirror image. Uncheck it to go back to normal.

Flip: Select this checkbox to flip the image upside down. Uncheck it to go back to normal.



NOTE: You can choose Mirror and Flip function if you set up the camera in a special position, upside down for example.

3.5.2 Top Menu For VLC Mode:

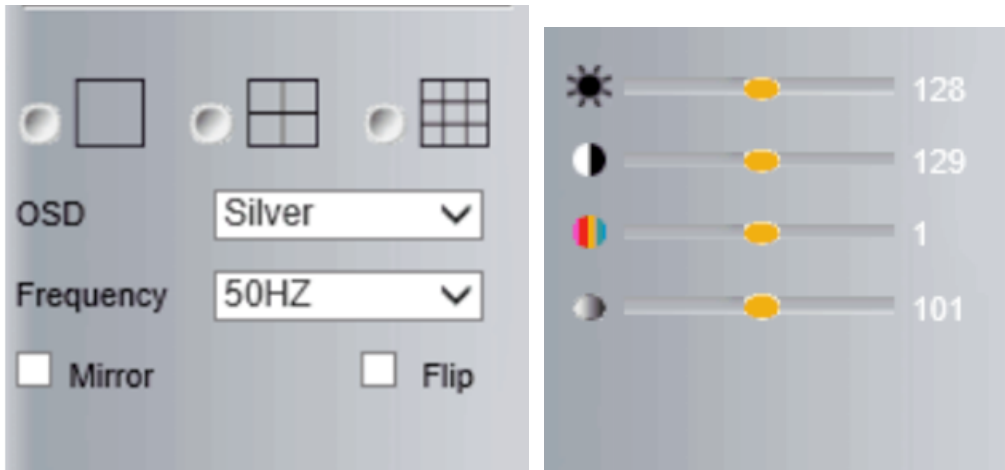


This will be the same as 3.3.1 TOP Menu For QuickTime Mode.

3.6 Left Side Menu:

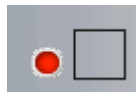
3.6.1 Left Side Menu For IE browser

There are some basic operation icons listed on the left side menu as below:



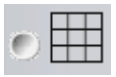
Click this one, you can view the main channel of the camera you login to, move the mouse to the

icon, the frame will change to red color



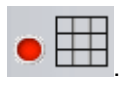
Click this one; you can view 4 Channels of cameras that are connected, from CH1 to CH4. Move

the mouse to the icon, the frame will change to red color

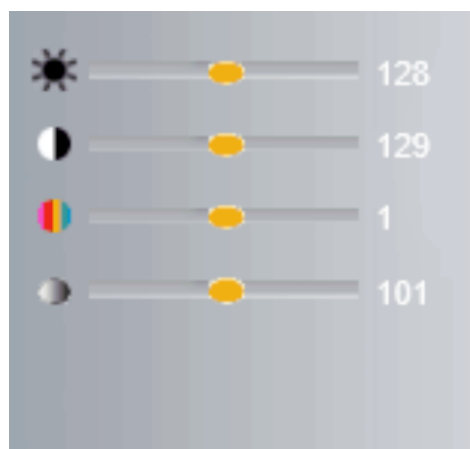


Click this one; you can view 9 Channels of cameras that are connected, from CH1 to CH9. Move

the mouse to the icon, the frame will change to red color



NOTE: If you want to view 4/9 channels, you should set the Multi-Device firstly (See section 4.13 Multi-Device Settings).



Brightness: set value from 0 to 255, click the icon, it will change back to the factory settings.



Contrast: set value from 0 to 255, click the icon, it will change back to the factory settings.



Hue: set value from -128 to 127, click the icon, it will change back to the factory settings.



Saturation: Set video saturation here.

3.4.2 Left Side Menu for Safari, Chrome, Firefox:

There are some basic operation icons listed on the left side menu as below:

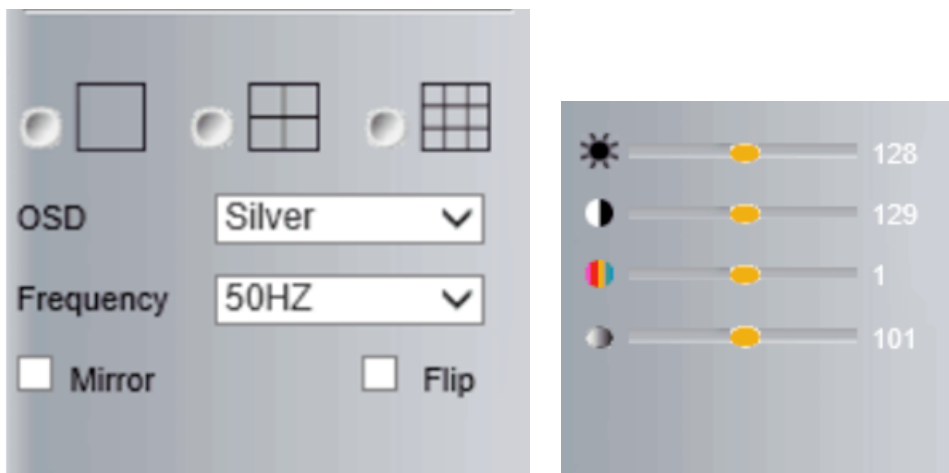


Figure 4.4

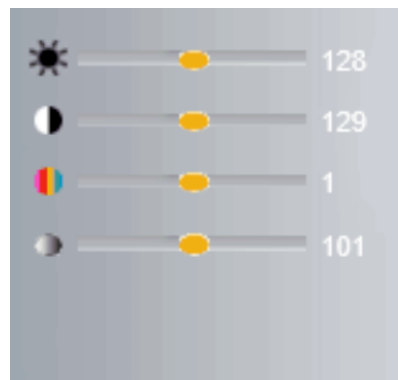


Figure 4.6



Brightness: set value from 0 to 255, click the icon to go back to the factory settings.



Contrast: set value from 0 to 255, click the icon to go back to the factory settings.



Hue: set value from -128 to 127, click the icon to go back to the factory settings.



Saturation: Set video saturation here.

4. SETTINGS

4.1 Status----Device Info.



Click “ **Settings**” icon select “Status”, it will show the basic information such as “**Device ID**”, “**Device Client Version**”, “**Device System Version**”, “**Description**”, “**IP Address**”, “**UPNP Status**”, “**DDNS Status**” etc.

Default device name is “**IP Camera**”, users can change the camera’s description here, picture as below:

4.1.2 For IE, camera will show as below:

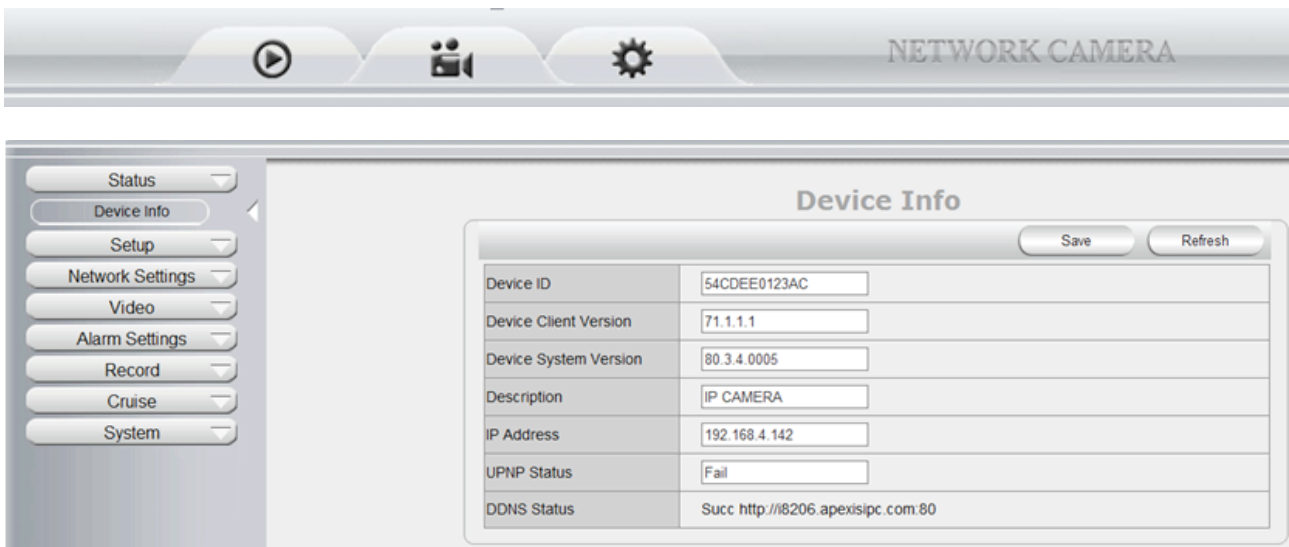


Figure 4.7

4.1.3 For Safari, Chrome, Firefox, camera will show like picture as below:

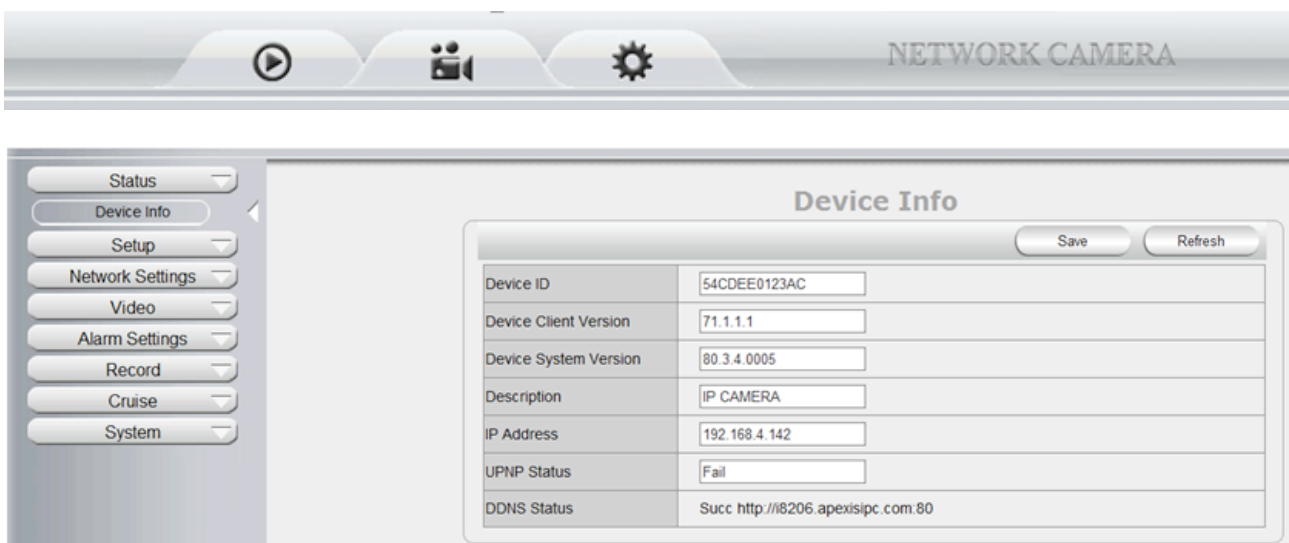


Figure 4.8

4.2 Setup

4.2.1 User Permission

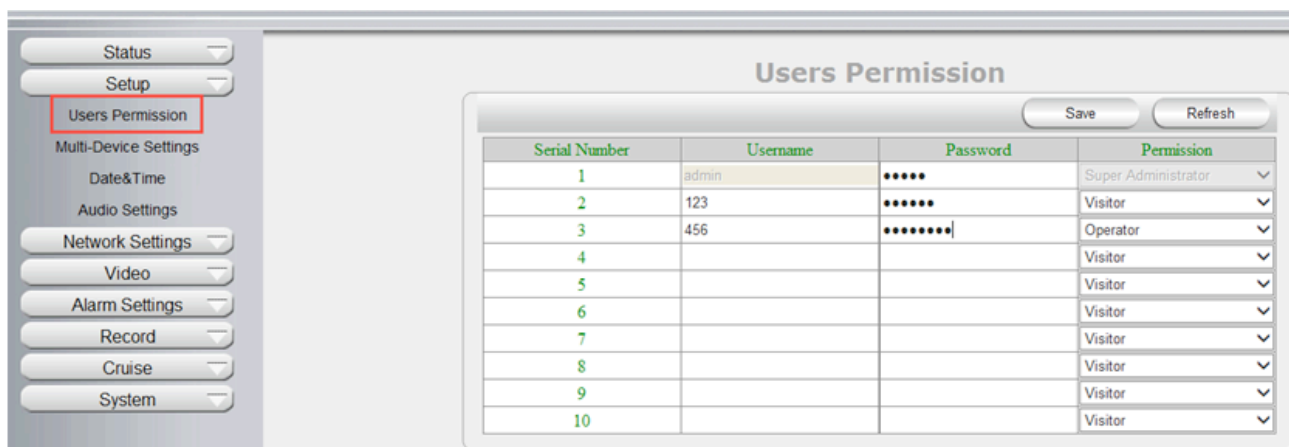
User can set 10 different usernames and passwords for different permission; Permission: Administrator, Operator; Visitor;

Super Administrator : Every device has a super administrator, it has the highest permission, can set all the parameters.

Administrator : Lower permission than super administrator, it can set most of the parameters except adding or editing other administrator accounts.

Operator: Lower permission than administrator, can do some operation such as pan/tilt control and set some parameters.

Visitor: The lowest permission, only can view live video, can't control the pan/tilt, parameter settings etc.

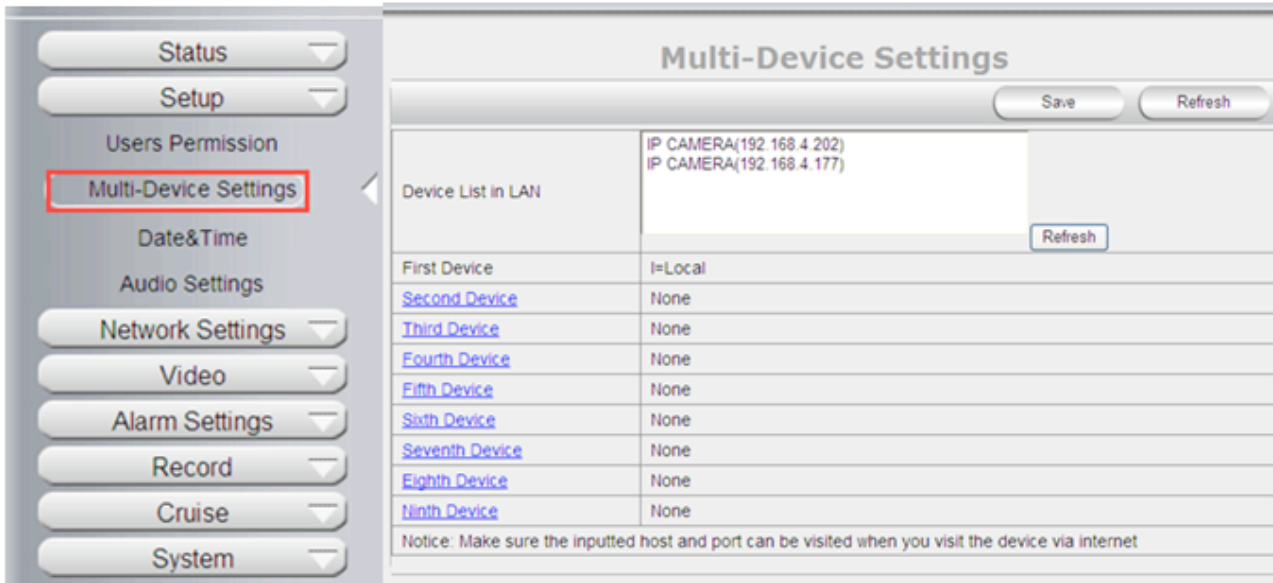


Serial Number	Username	Password	Permission
1	admin	*****	Super Administrator
2	123	*****	Visitor
3	456	*****	Operator
4			Visitor
5			Visitor
6			Visitor
7			Visitor
8			Visitor
9			Visitor
10			Visitor

4.2.2 Multi-Device Settings

Note: Multi-Device only can be set under IE Browser, for Firefox, Safari, Chrome, you cannot see these setting, as they do not support ActiveX.

Click "**Multi-Device Settings**" to enter the interface:



If you have more cameras in same LAN network, software can auto-detect them and list in “Device List in LAN”

Enable the channel you want to add; Choose the IP, input host(for camera in different network, you will need to input external ip address/DDNS address), web port, media port, username, and password manually, click Add to submit.

4.2.3 Date & Time

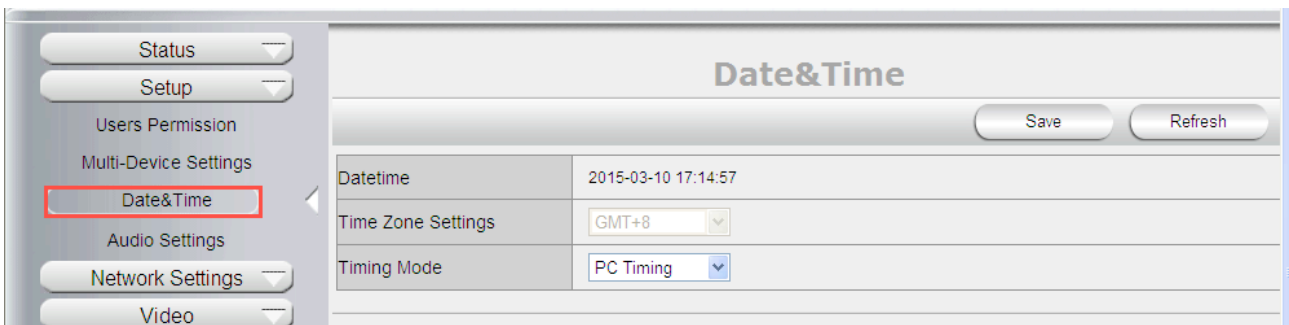
Date Time: Display the current date and time

Time Zone: Set the current time zone Select the working time server.

Time Mode: Can choose PC Time or NTP Time.

PC Timing: Camera will set the time the same as your PC.

NTP Server: User will need to select a working time server, and select the time zone.



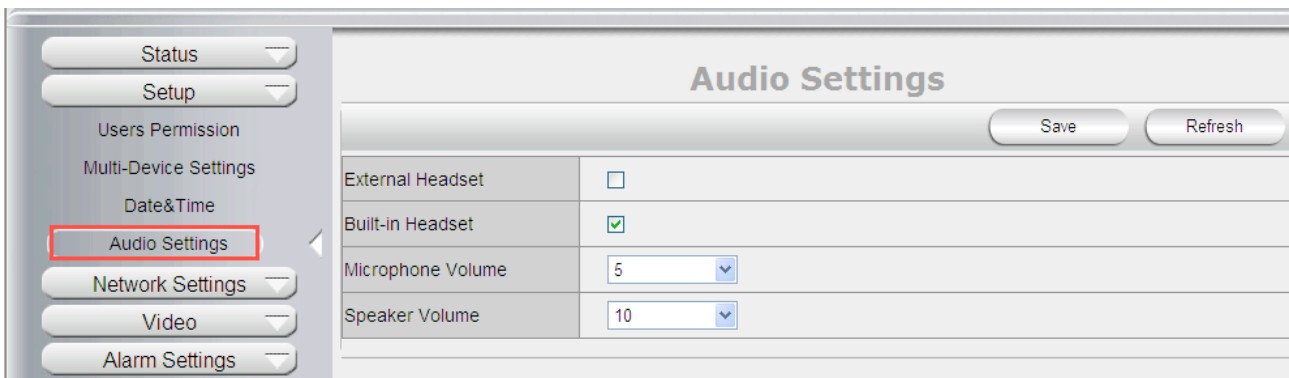
4.2.4 Audio Settings

External Headset: User need to enable this feature, and connect external audio device like speak, Mic. So that this feature work.

Built-in Headset: This means the built-in Headset port; with located in the cable. User can connect to the audio devices;

Microphone Volume: User can adjust the volume of Microphone.

Speaker Volume: User can adjust the volume of Speaker.



4.3 Network Settings

4.3.1 IP

Network Type: User can set Dynamic Address to obtain IP directly from router, or set a Static IP manually.

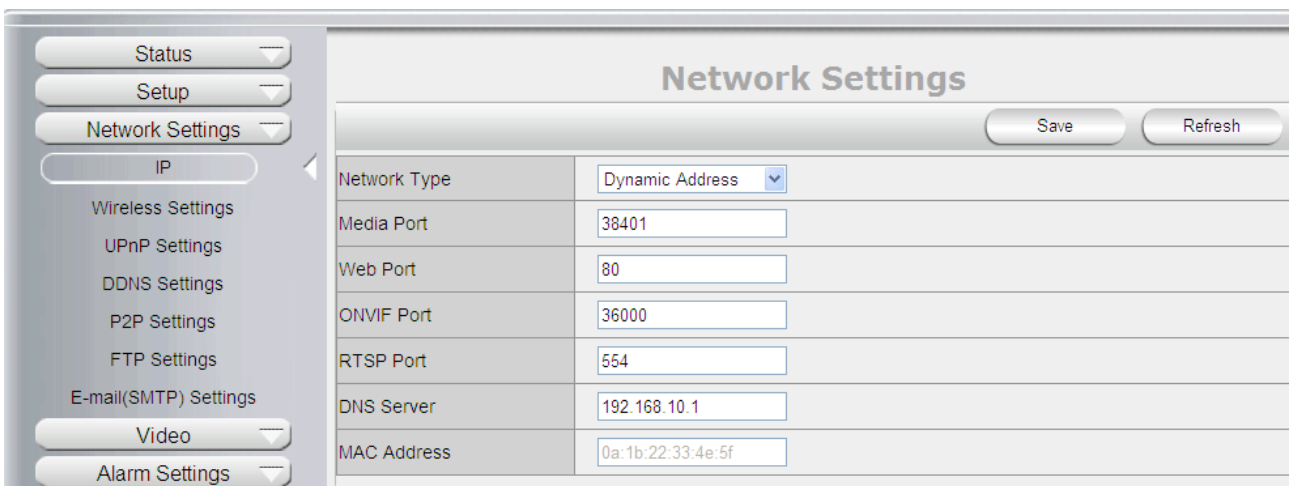
Media Port: User can set the Media port to transfer video if need to view camera remotely.(Work with DDNS or external IP)

Web Port: User can set the web port to transfer video if need to view camera remotely.(Work with DDNS or external IP)

Onvif: User can set Onvif port to work with other Onvif device like NVR..etc;

RTSP Port: Default 554;

DNS server: User can change DNS IP settings.



4.3.2 Wireless Settings

Click the icon "**Search**" to scan the wireless network in this environment automatically.

Using Wireless Lan: Set Wi-Fi ON/OFF.

SSID: the ID of Wireless network, it should be the same SSID as the connected Wi-Fi router.

Network Type: Two modes:

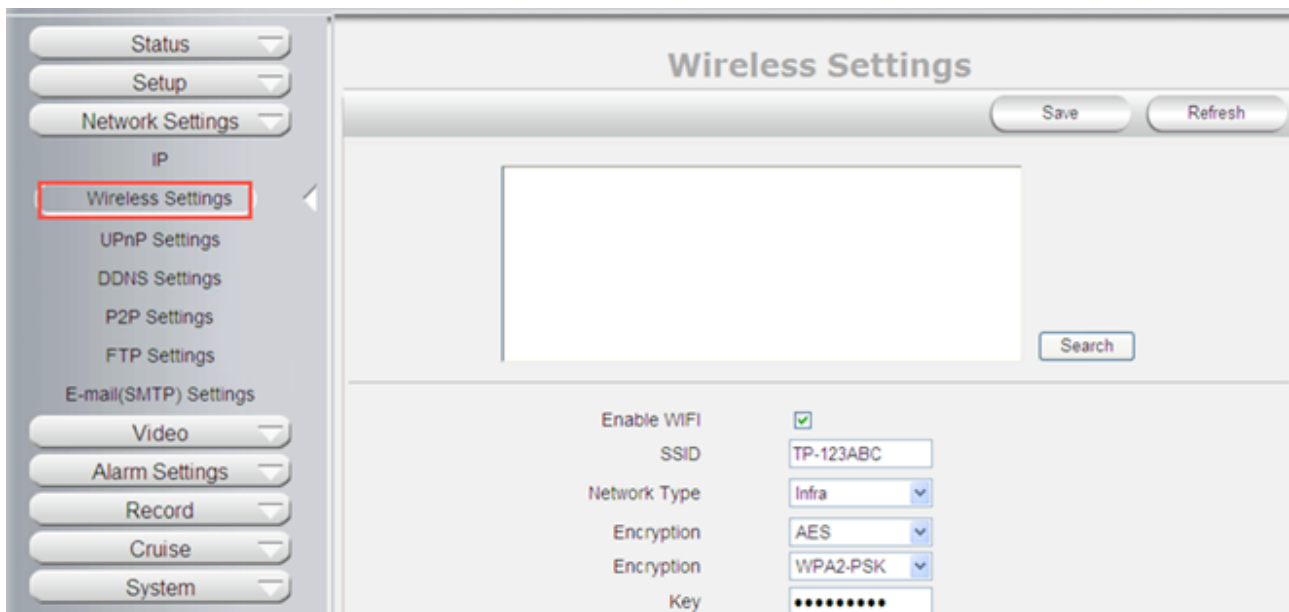
1. **Infra** (Infrastructure Mode), if using normal AP, choose **Infra** mode.

2. **Ad-Hoc** Mode. If using point-to-point transmission, choose **Ad-Hoc** mode.

The factory setting is **Infra**.

- **Encryption:** WEP, TKIP, AES optional.
- **Authentication:** **WEP:** Open System or Share Key. **TKIP (AES):** WPA-PSK or WPA2-PSK.
- **Select Key:** Choose the channel of WEP share Key.
- **Key:** Input the key the same as the settings in your router.

All the Wi-Fi encryption mode settings should be the same as your Wi-Fi router, and different encryption has different authentication menu.



4.3.3 Upnp Settings

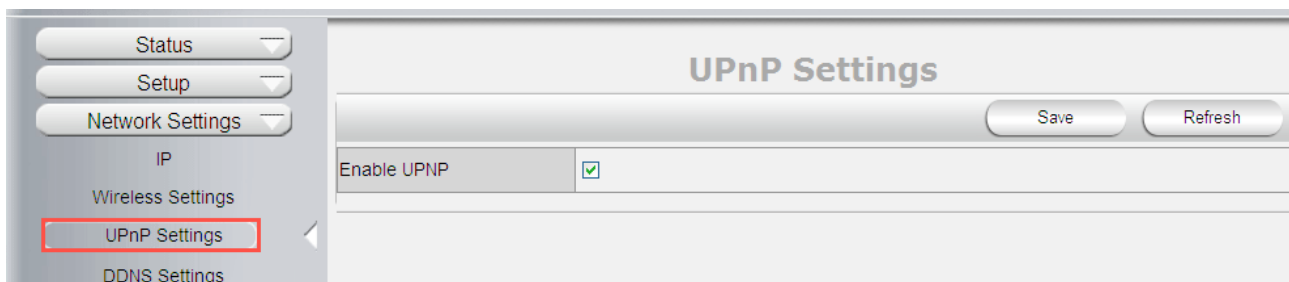
Enable UPNP: Set UPNP function ON/OFF.

Select it to enable UPNP, then the camera will do port forwarding automatically.

It's helpful for using DDNS, if your router support UPNP, then you no need do port forwarding in router.

NOTE: Here UPNP only for port forwarding now. It has much relation with security settings of your router, make sure the UPnP function of router is ON.

ATTENTION: If your router doesn't support UPNP function, it may show error information. So we recommend you do port forwarding manually in your router.



4.3.4 DDNS Settings

There are 2 options:

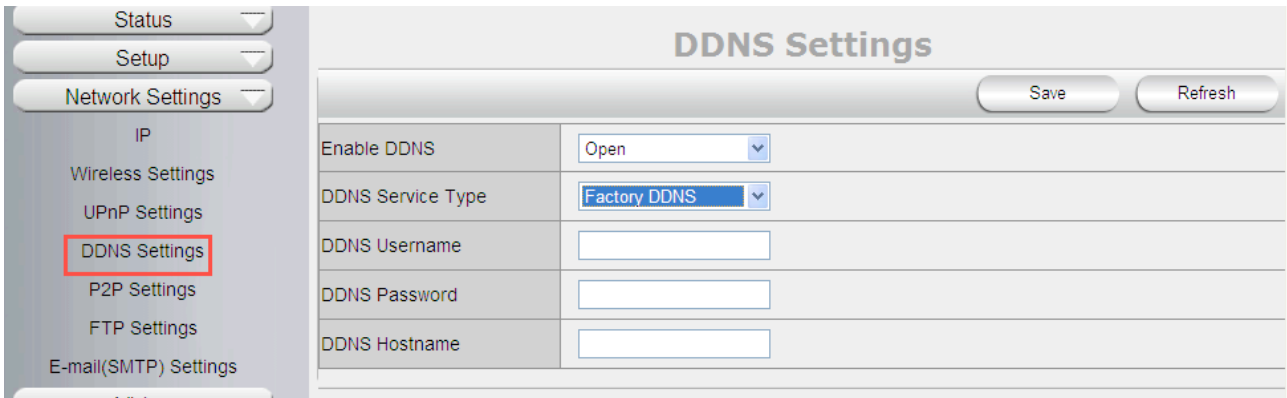
Factory DDNS: This domain is provided by the manufacturer.

Third Party DDNS: This domain is provided by a 3rd party, such as DynDNS, 3322 etc.

- **Enable DDNS:** Set DDNS function ON/OFF.
- **DDNS Server Type:** Set DDNS server type, such as factory DDNS or third party DDNS server provider.
- **DDNS User:** Registered user name from DDNS server. (If you use factory DDNS, it can't be modified.)
- **DDNS Password:** Registered password from DDNS server. (If you use factory DDNS, it can't be modified.)
- **DDNS Host Name:** Domain name set by user. (If you use factory DDNS, it can't be modified.)

For the third party DDNS, you have to register an account first, keep the user, password, host, then input it.

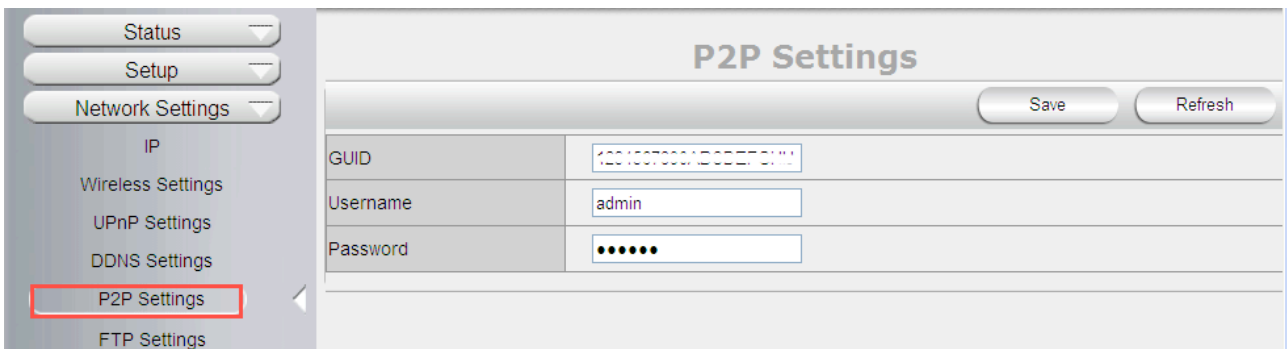
NOTE: Only one DDNS can be chosen, for example, if you use manufacturer's DDNS, the 3rd one won't work, if you use a 3rd DDNS, the manufacturer's one won't work.



4.3.5 P2P Settings

User can see and change P2P GUID here

Factory will provide a factory P2P GUID for free using. Default user: admin; password: pylecam; User can change the password here or change a new P2P GUID here.



4.3.6 FTP Settings

Set FTP service, Snapshots will be delivered to appointed FTP server when alarmed.

Enable FTP: Set FTP function ON/OFF.

FTP Server: Set FTP server address.

FTP Port: Set the port of FTP server, default is 21.

FTP User: Set the user name of FTP server.

FTP Password: Set the password of FTP server.

Upload Folder: Set the path of remote FTP server. Make sure that the folder you plan to store images exists. (The camera cannot create the folder itself). Also, the folder must be erasable.

FTP Mode: It supports standard (POST) mode and passive (PASV) mode.

Click save to submit, click test to check the settings.

NOTE: When alarmed, there will be 3 snapshots sent to the FTP server every 1 second

FTP Settings	
Enable FTP	<input checked="" type="checkbox"/>
FTP Server	<input type="text" value="192.168.10.106"/>
FTP Port	<input type="text" value="21"/>
FTP User	<input type="text" value="yjc"/>
FTP Password	<input type="password" value="..."/>
Upload Folder	<input type="text"/>
FTP Mode	<input type="text" value="PORT"/>
Upload Image Now	<input type="checkbox"/>

4.3.7 E-mail(SMTP) Settings

Enable Email: Set e-mail function ON/OFF.

Sender: Set sender's name or email address

Sender's email: Set sender's email address.

Receiver: Set receiver's email box. (Supports 3 receivers' emails simultaneously)

SMTP Server: The sender address SMTP server.

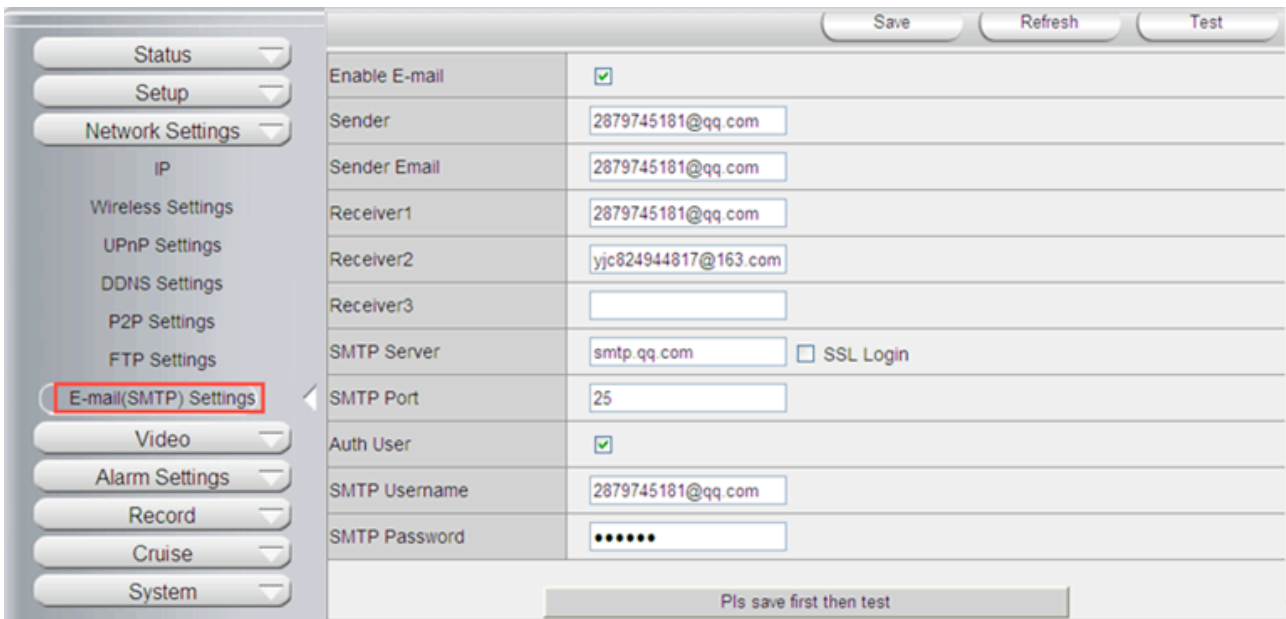
SMTP Port: The sender's SMTP Port, usually is 25, some SMTP servers have their own port, e.g., the smtp port for Gmail is 465.

Auth User: Verify the user settings.

SMTP Username: Set sender's user name or email address.

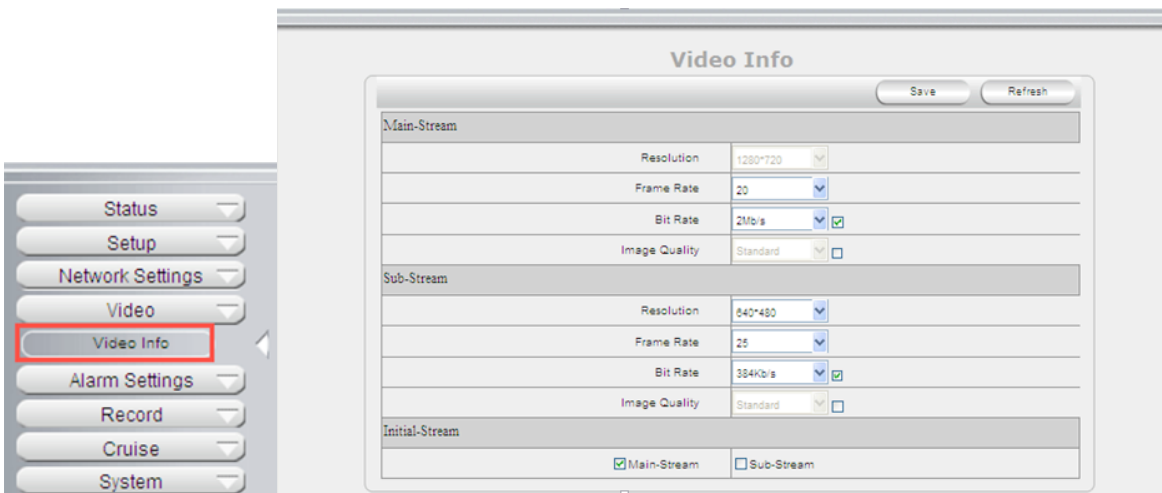
SMTP password: Set sender's email address password.

Note: User can save the settings first, then click Test button to see if settings working. If not, pls double check your settings or spelling.



4.4 Video Info.

Click “Video Info” to enter the interface as below:



There are two options for stream, **Main-Stream** and **Sub-Stream**, you can set the stream based on the actual operation environment, for example, if the bandwidth is good enough, set Main-Stream as Initial-Stream, or choose Sub-Stream if better.

Set the parameters of **Main-Stream** and **Sub-Stream** as below:

Resolution: 1280 x 720, 640 x 368, 320 x 208 optional.

Frame Rate: Set the frame rate according to the bandwidth. Frame rate could be “**Auto**” or “**from 1 fps to 30 fps (Real time)**”. If the network situation is not ideal, you can reduce the frame rate to control the coding rate, make the moving pictures smoother.

Bit Rate: Higher bite rate means better quality images, but takes more bandwidth, so adjust the settings according to the actual bandwidth available. The range of bit rate from 128 Kbps ~ 4 Mbps.

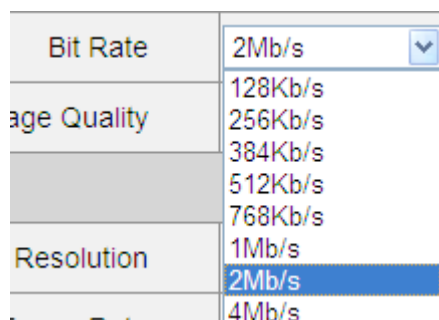


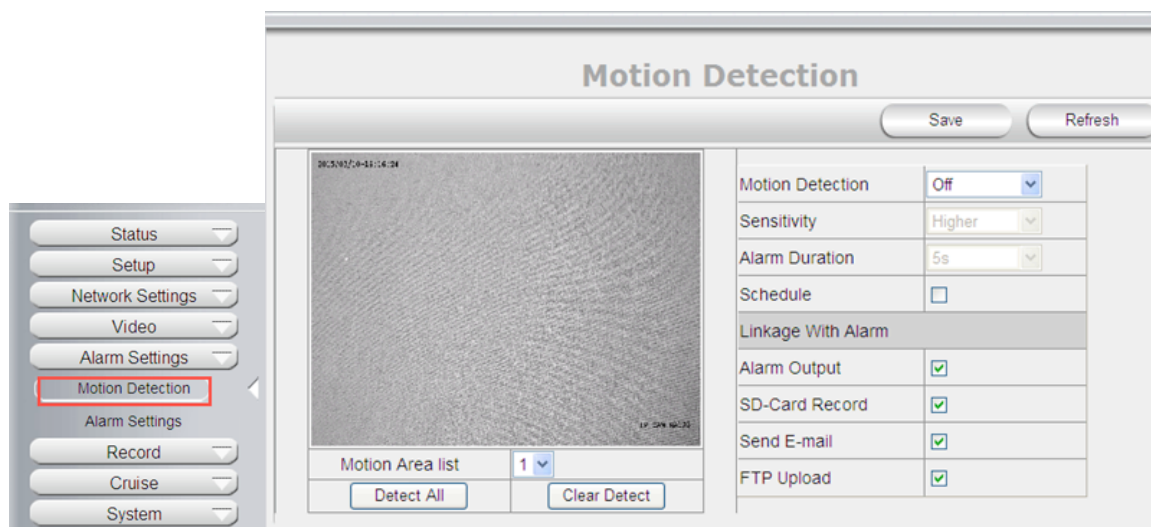
Image Quality: Better image quality, higher bit rate value, but it will take more bandwidth, the image quality parameters could be set as below:



NOTE: When the device runs, only can select Bit Rate or Image Quality either.

4.5 Alarm Settings

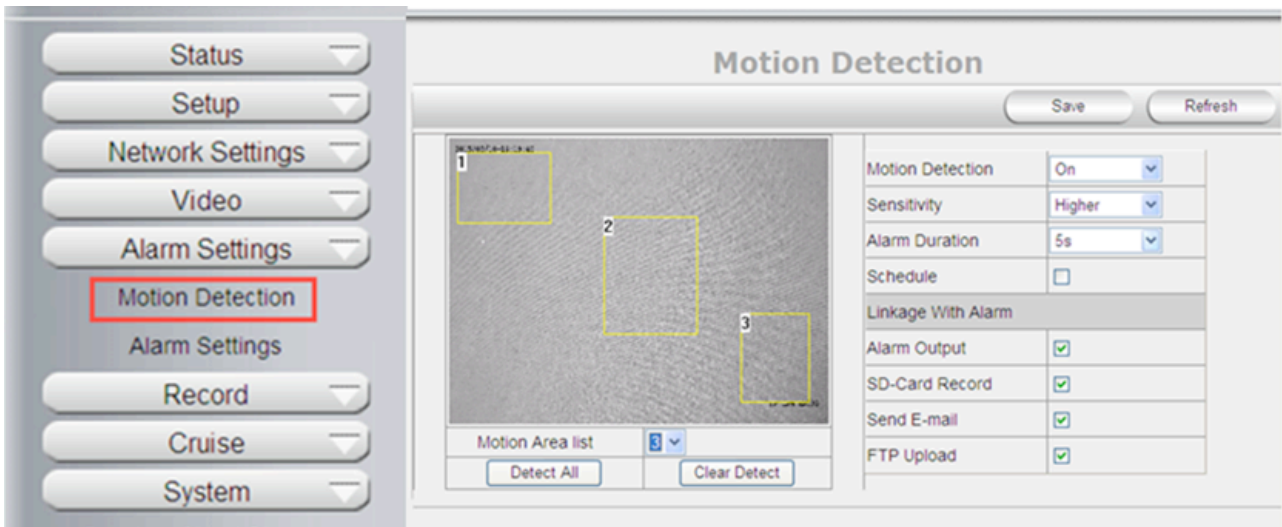
4.5.1 Motion Detection



Motion Detection Zone Armed:

Can set all zones to be armed, or a specified zone armed.

Before setting a specified zone, you should set "**Motion Detection**" to "**ON**", then press left mouse, drag the mouse onto video area to set the detection zone, and save it, supports 3 areas.



- **Detect All:** Setting the whole video window as the motion detect armed zone.
- **Clear Detect:** Clear all armed zone.
- **Motion Detection:** Set motion detection armed function ON/OFF.
- **Sensitivity:** Set detection sensitivity as Low, Middle, High, Higher, Highest.
- **Alarm Duration:** Set each alarm duration, can be forever, 5s, 10s, 15s, 30s, 60s.

Action with Alarm

These are linkage actions optional for motion detection. User can select the alarm relative alarm convenience to them.

Alarm output: Select it to enable alarm output, unselect to stop.

SD-Card Record: Select it to enable record to SD card, unselect to stop.

Send E-mail: Select it to enable E-mail alert function, unselect to stop.

FTP Upload: Select it to enable FTP upload function, unselect to stop. .

Click **Save** to save all the settings.

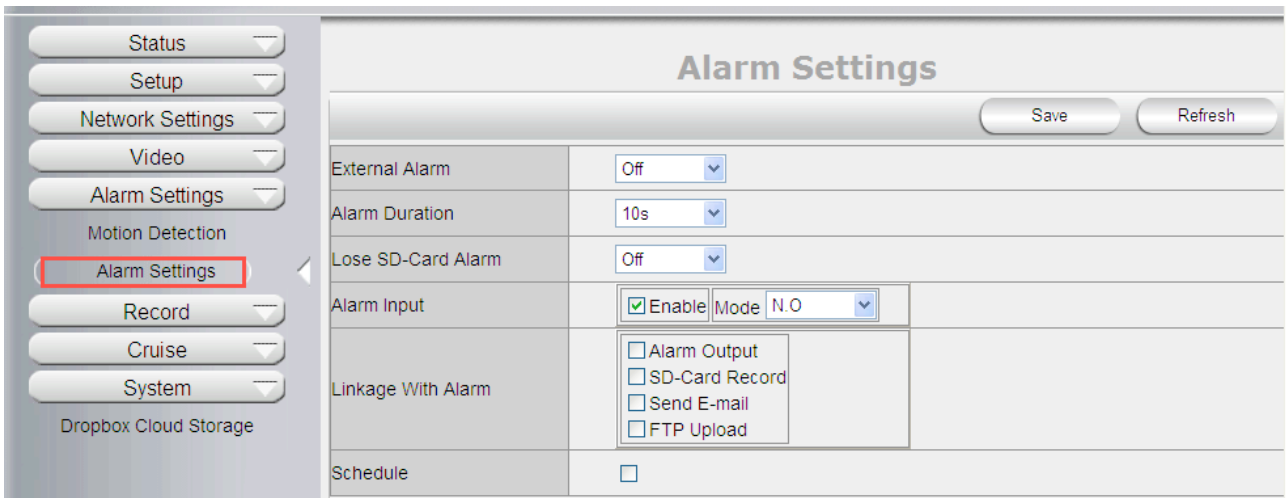
Click **Update** to refresh the settings.

Linkage With Alarm	
Alarm Output	<input checked="" type="checkbox"/>
SD-Card Record	<input checked="" type="checkbox"/>
Send E-mail	<input checked="" type="checkbox"/>
FTP Upload	<input checked="" type="checkbox"/>

4.5.2 Alarm Settings

External Alarm: Set external alarm function ON/OFF.

- **Alarm Duration:** Set external alarm output duration (Relay close time), can be Forever, 5s, 10s, 15s, 30s, 60s.
- **Lose SD-Card Alarm:** Set alarm triggered ON/OFF if the SD-Card is lost.
- **Alarm Input:** Set alarm input ON/OFF, it supports NO/NC external alarm device, choose the correct mode to make sure it works well, it refers to the I/O pin6 (Input2) and pin7 (Input1).



Alarm output: Select it to enable alarm output, unselect to stop.

SD-Card Record: Select it to enable record to SD card, unselect to stop.

Send E-mail: Select it to enable E-mail alert function, unselect to stop.

FTP Upload: Select it to enable FTP upload function, unselect to stop. .

Click **Save** to save all the settings.

Click **Update** to refresh the settings.

Linkage With Alarm	
Alarm Output	<input checked="" type="checkbox"/>
SD-Card Record	<input checked="" type="checkbox"/>
Send E-mail	<input checked="" type="checkbox"/>
FTP Upload	<input checked="" type="checkbox"/>

4.6 Record

4.6.1 Local Settings

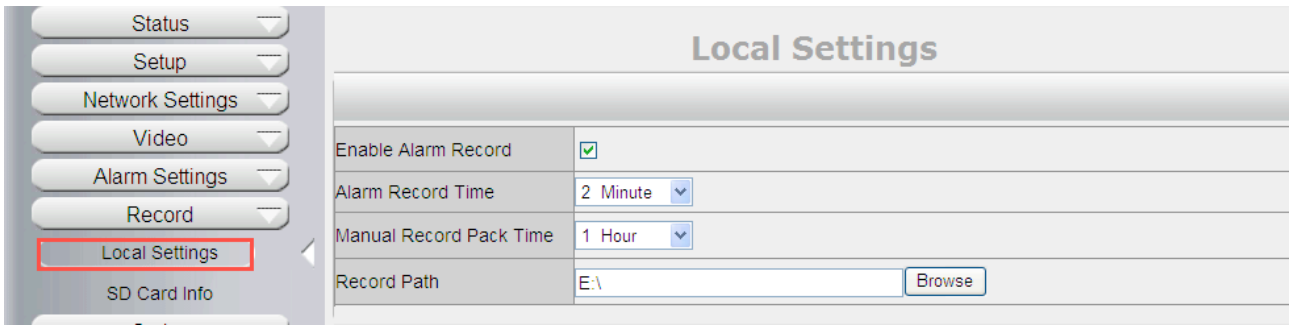
Note: This feature will suitable for IE only, as other browsers not support IE activeX.

Enable Alarm Record: Camera will record to the path user set when Alarm happens.

Alarm Record time: User can set the record time when Alarm happens. Such as 2 mins.

Manual Record Pack time: User can set the manual record time, such as 2 hours. Once click the "Record" button under the live video screen, camera will record as long as user set.

Path: This belongs to the PC path, user can set the PC path to store all records.



4.6.2 SD Card info

Device Name: Display the name of SD card.

Total Size: Display the total size of SD card

Balance Space: Display the free space of SD card

Status: Display the state of SD card.

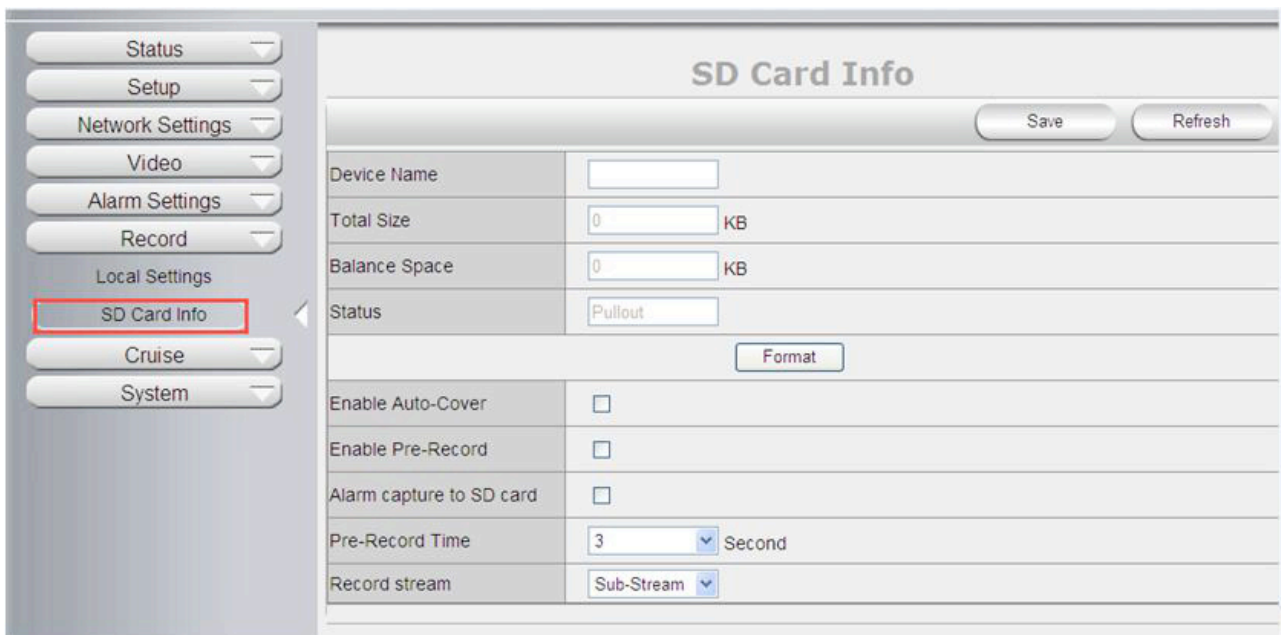
Format: Click it to delete all data and format the SD card. (All data will be lost if formatted).

Open Auto cover: Set SD card auto cover when it's full.

Open Pre-recording: Set Pre-recording function (Record the video before alarm triggered).

Pre-recording Time: Set the Pre-recording time, can be from 1 to 6 seconds.

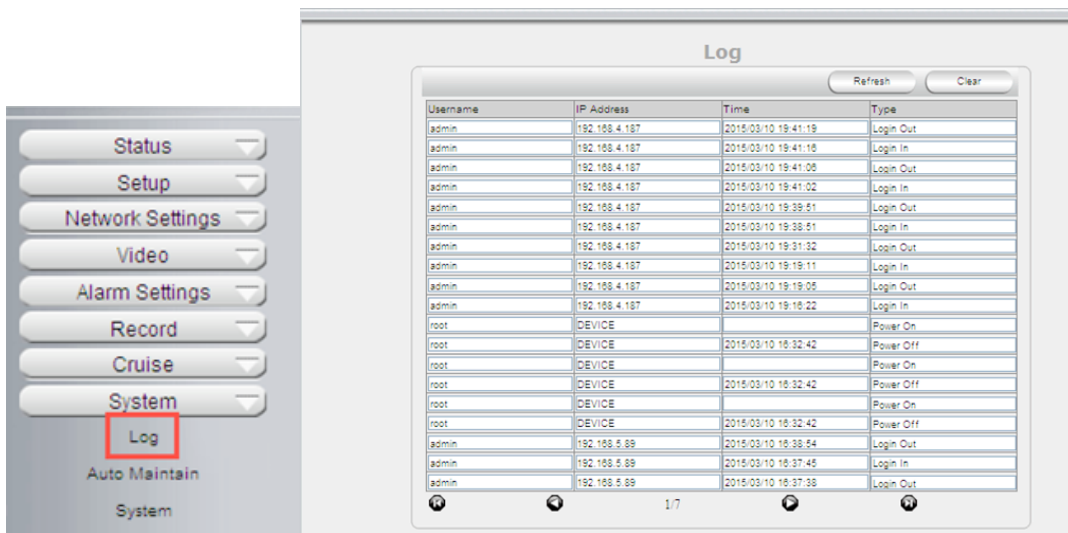
Record Stream: Choose the stream here:Main Stream and Sub Stream.



4.7 System

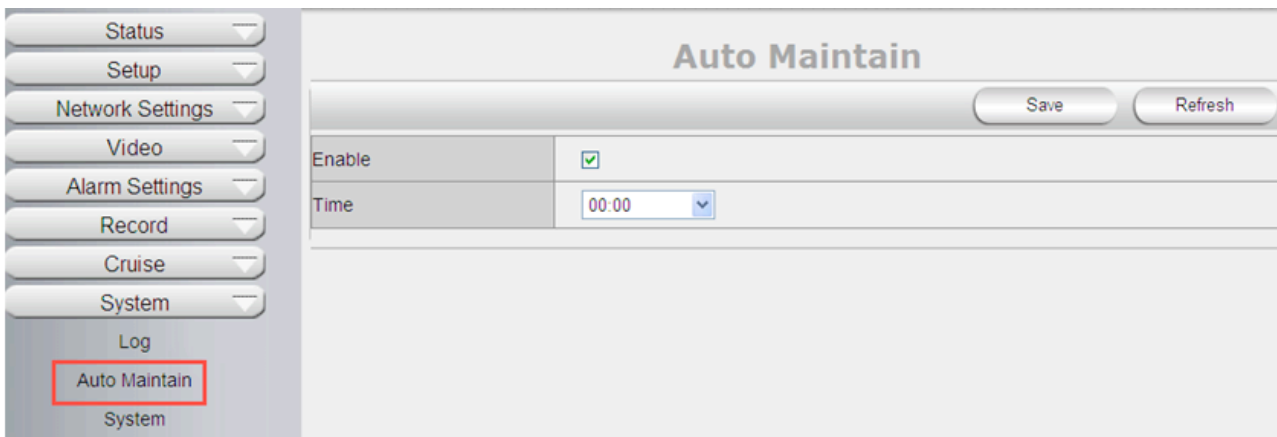
4.7.1 Log

Log provides information of camera, login, log out, alarm, power on/off..etc;



4.7.2 Auto Maintain

Auto Maintain provides an auto protection of hardware; Set a time such as 24:00; Then camera will auto reboot; and refresh the hardware performance.



4.7.3 System

Reboot Device: Camera will get reboot.

Restore factory settings: User can restore factory settings once forget password, settings..etc.

Upgrade Device Firmware: To upgrade or degrade the camera firmware.(The firmware needs to store in the same camera you are viewing camera.)

Upgrade Device Web ui: To upgrade or degrade the camera web ui. (The firmware needs to store in the same camera you are viewing camera.)

The image shows a web-based configuration interface. On the left is a vertical sidebar menu with the following items: Status, Setup, Network Settings, Video, Alarm Settings, Record, Cruise, System, Log, Auto Maintain, and System (which is highlighted with a red rectangular border). The main content area is titled "System" and contains the following elements:

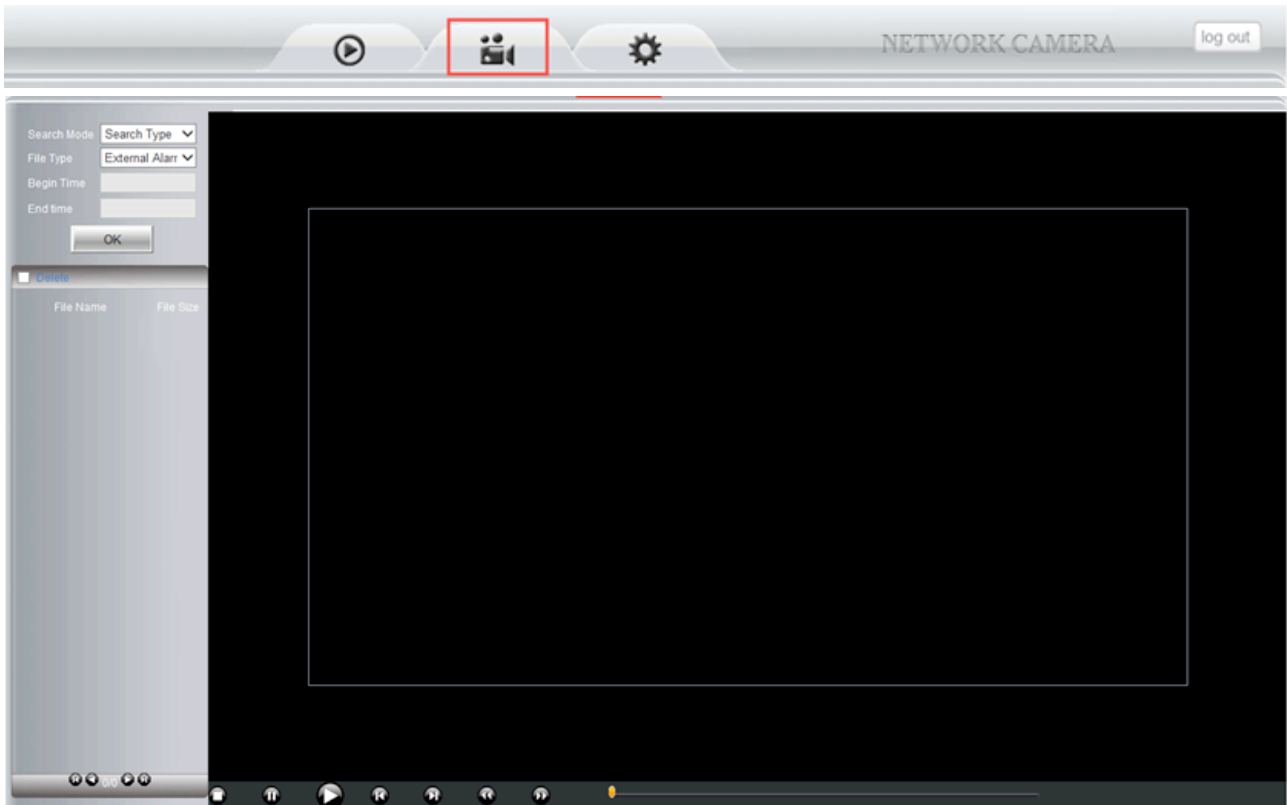
- Buttons for "Reboot Device" and "Restore Factory Settings".
- A section for "Upgrade Device Firmware" with a file selection input field, a "..." button, and a "Start" button.
- A section for "Upgrade Device Web UI" with a file selection input field, a "..." button, and a "Start" button.

5. PLAYBACK for IE browser only

Note: Playback function shows under IE ActiveX mode only. Other browsers not support this feature.



Click login the playback interface, this is for SD Card files playback. So If User not have SD card in the camera or not have any file in SD card, will not work.



Search Mode: User can search the record, snapshot..etc by different methods.

Search Type: External Alarm and Motion detection optional; Select External Alarm; Camera will search the alarm file from External alarm which comes from other device; Select motion detection, Camera will search the alarm file from motion detection.

Search All: Camera will search all file in SD Card.

File type: External Alarm and Motion detectio optional. This option works only work when user select Search Type from Search mode

Begin Time and End Time: This feature work when user select Search Time from Seach mode; Select a begin time, and end time, camera will search these files in the time area.

Click "OK" icon, will pop-up a window for search file, set the mode or time, click OK to submit, then all the correlative files will be listed on the left side.

After searching, files will be listed on the left side window, choose the file, double click it or click play icon 

to start replay. Users can check the replay file information here, do other operation such as **Stop, Pause, Previous, Next, Fast Backward, Fast Forward** etc.



6. FREQUENTLY ASKED QUESTIONS

1. I have forgotten the administrator username and/or password

There is a **[RST]** button on the rear panel, keep the power on, hold the reset button for 30 seconds, it will restore back to factory default settings as below:

Username: admin


Password: pylecam

NOTE: Please don't press **RST** button unless you are sure you want to do it.

2. There is no picture displayed in IE browser (For IE only)

It maybe the ActiveX problem,

If using the IE browser for the first time, you should install the ActiveX control, details as below:

Before login, click the ActiveX icon  at the right side of interface to download, save the file, run it to install the ActiveX.

3. Fail to visit IP camera via IE after upgrading (For IE Only)

Solution: Clear the browser buffer.

Steps: Open IE>click "Tools"> "Internet Options">"General">"Delete"> "Internet temporary files", delete the cookies and temporary files, then click "OK" and re-login.

4. The video is not smooth

Possible reason 1: The frame rate value is too small.

Solution: Increase the frame rate value.

Possible reason 2: Too many users are connecting to the device.

Solution: Close some connection or reduce the video frame rate.

Possible reason 3: Network bandwidth is too low, lots of lost packets.

Solution: Reduce the video frame rate or video compression bit rate.

5. Fail to visit IP camera via IE browser

Possible Reason 1: Network is disconnected.

Solution: Connect your PC to network, check whether the network works well or not. Check if there's a problem with the cable connection, or network problem caused by PC virus.

Possible reason 2: IP Address has been occupied by other devices.

Solution: Stop the connection between IP camera and network; connect the IP camera to PC.

Directly reset IP address according to the proper operations recommended.

Possible reason 3: IP addresses are in different subnets.

Solution: Check IP address, Subnet masking and Gateway.

Possible reason 4: Physical address of network conflicts with the IP camera.

Solution: modify the physical address of IP camera.

Possible Reason 5: Web port has been modified.

Solution: Contact as Network Administrator to obtain related information.

Possible Reason 6: Unknown.

Solution: Press RESET to restore to factory settings then connect it again, the default IP address is 192.168.1.155, subnet mask is 255.255.255.0

6. The color of image is abnormal (Green or other color)

Sometimes the IP camera images cannot be displayed properly because of different graphics cards, the images appears to be green or other colors, then you should run the program "Config.exe" from the downloaded OCT files.

(or run C:\windows\system32\Config.exe) to set the following parameters for the display buffer: auto-detection, used display card memory or system memory, then run IE, connect IP camera again.

7. There is no voice while monitoring

Possible Reason 1: No audio input connection.

Solution: Check audio connection of the host.

Possible Reason 2: the relative audio option of IP camera is OFF.

Solution: Check audio parameter settings to see if you have set the audio option ON, but without external audio input.

8. Image processing doesn't work properly

Possible Reason 1: System problem, DirectX function is disabled, which will cause slow display of images and abnormal color.

Possible Reason 2: Hardware problem, graphics card doesn't support image acceleration and hardware zooming functions. (For hardware issue, the only solution is to change your graphics card).

Solution: Install DirectX image driver, then click "Start">"Run">input "dxdiag", set enable "DirectDraw Acceleration" "Direct3D Acceleration" "AGP Texture Acceleration" functions.

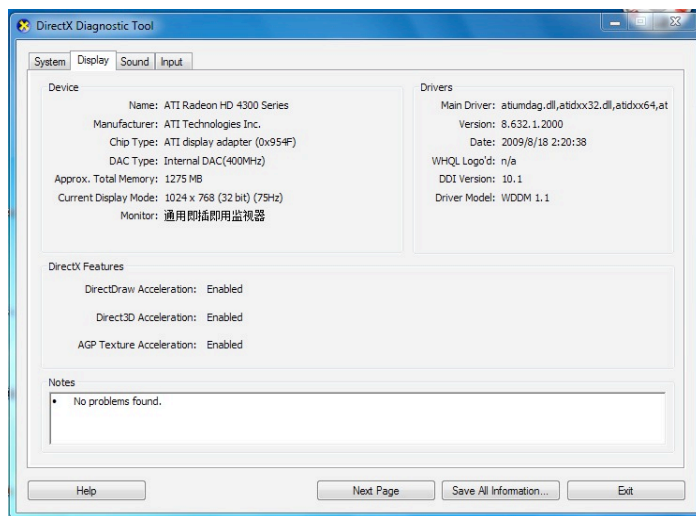


Figure 13.0

Note: If you are unable to do it, it means your DirectX is not installed properly or hardware doesn't support this function.

9. Fail to use DDNS

Possible Reason 1: The PC or IP Camera can't connect to the internet.

Solution: Check the internet connection and settings.

Possible Reason 2: Port forward is not set in router.

Solution: Set the port forward of extranet in router correctly.

For example, if IP Camera address is: 192.168.1.100, Media port is 38401, Web port is 85, factory DDNS is http://test.aipcam.com.

Set Port Forwarding in the router.

This is an important step. You need to set port forwarding in your router, to refer to the IP of your camera correctly, for DDNS to work. There are so many kinds of routers, so it's difficult to show fixed steps, but here are some samples of different router's port forwarding settings, just for reference:

TP-LINK:

1. Login to the router.



2. Choose "Forwarding", select "Virtual Servers"

3. Click the Add New button, pop-up below:

Add or Modify a Virtual Server Entry

Service Port: (XX-XX or XX)

IP Address:

Protocol: ALL

Status: Enabled

Common Service Port: -Select One-

Save Return

Figure 13.1

Fill in the service port (**don't use 80**), IP address of the camera, then click Save

NOTE: The port and IP address should be the same as the camera.

Fill in the **web port**, for example port 85, IP address as 192.168.1.100, click Save.

(1) Repeat step 3 above, it will pop-up the window again, fill in the **media port** as 38401, IP address as 192.168.1.100, then save.

(2) Then check the “Device Info” –“DDNS Status”,

It will show DDNS: <http://test.aipcam.com:85> , input this link in IE, then you can visit this camera remotely.

BELKIN:

1. Login to the router.
2. Choose “**Firewall**”, select “**Virtual Servers**”
3. Input the port (**don't use 80**) and IP address, then click save.

NOTE: The port and IP address should be the same as the camera.

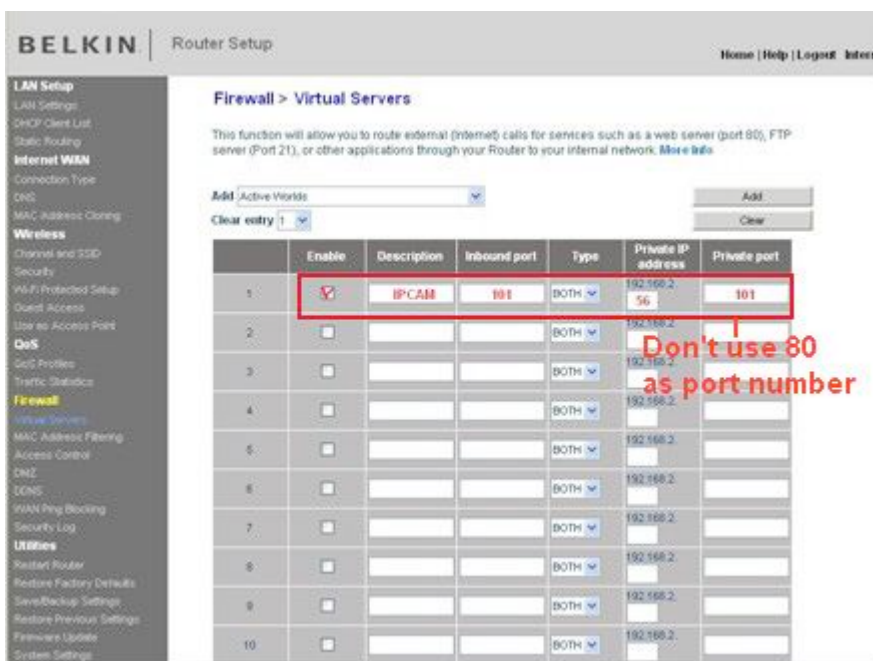


Figure 13.2

DLINK:

1. Login to the router.
2. Choose “**Advanced**”, select “**Virtual Servers**”
3. Input the port, IP address, Protocol, then click save.

NOTE: The “**public port**” & “**private port**” should be the same as camera’s port, choose the protocol to be “**both**”.

D-Link

DIR-601 // SETUP ADVANCED TOOLS STATUS SUPPORT

VIRTUAL SERVER

The Virtual Server option allows you to define a single public port on your router for redirection to an internal LAN IP Address and Private LAN port if required. This feature is useful for hosting online services such as FTP or Web Servers.

Save Settings Don't Save Settings

24 -- VIRTUAL SERVERS LIST

		Port	Traffic Type	
<input type="checkbox"/>	Name rivomaxcam << HTTP	Public Port 81	Protocol Both	Schedule Always
<input type="checkbox"/>	IP Address 192.168.0.107 << Computer Name	Private Port 81	256	Inbound Filter Allow All
<input type="checkbox"/>	Name << Application Name	Public Port 0	Protocol TCP	Schedule Always
<input type="checkbox"/>	IP Address 0.0.0.0 << Computer Name	Private Port 0	6	Inbound Filter Allow All
<input type="checkbox"/>	Name << Application Name	Public Port 0	Protocol TCP	Schedule Always
<input type="checkbox"/>		Private Port		Inbound Filter

Helpful Hints...

Check the **Application Name** drop down menu for a list of predefined server types. If you select one of the predefined server types, click the arrow button next to the drop down menu to fill out the corresponding field.

You can select a computer from the list of DHCP clients in the **Computer Name** drop down menu, or you can manually enter the IP address of the LAN computer to which you would like to open the specified port.

Select a schedule for when the virtual server will be enabled. If you do not see the schedule you need in

Figure 13.3

7. SPECIFICATIONS

Image Sensor	Image Sensor	1/4" Color CMOS Sensor
	Display Resolution	1280 x 720 Pixels (1000K Pixels, i.e. 1.0 Megapixel)
	Lens	3.6mm
	Mini. Illumination	0.5 Lux
	Viewing Angle	60-90 Degree
Audio	Input	Built-in Microphone
	Output	Built-in Speaker
	Audio Compression	ADPCM
Video	Image Compression	H.264, MJPEG
	Image Frame Rate	30fps (VGA),30fps (QVGA)
	Resolution	1280 x 720 (VGA), 640 x 368 (VGA), 320 x 208 (QVGA)
	Flip Mirror Images	Vertical / Horizontal
	Light Frequency	50Hz, 60Hz, Outdoor
	Video Parameters	Brightness, Saturation, Contrast, Hue
Communication	Ethernet Interface	Build in 10/100Mbps,Auto MDI/MDIX , RJ-45
	Supported Protocol	TCP/IP HTTP DNS DHCP PPPoE SMTP FTP SSL TFTP NTP ARP/RARP NFS RTSP RTP RTCP
	Compress rate level	128Kbps ~ 4Mbps
	Wireless Standard	IEEE 802.11b/g/n
	Data Rate	802.11b: 11Mbps (max.), 802.11g: 54Mbps (max.), 802.11n: 150Mbps (max.)
	Wireless Security	WEP & WPA WPA2 Encryption
Physical	Pan/Tilt Angle	Not Supported
	Infrared Light	12 IR LEDs, Night visibility up to 10 meters
	Alarm Input	Not Supported
	Alarm Output	Not Supported
Power	Power Supply	DC 5V/2.0A (EU,US,AU adapter or other types optional)
	Power Consumption	7 Watts (Max.)
Environment	Operate Temper.	0° ~ 55°C (14°F ~ 131°F)
	Operating Humidity	20% ~ 85% non-condensing
	Storage Temper.	-10°C ~ 60° (14°F ~ 140°F)
	Storage Humidity	0% ~ 90% non-condensing
PC System Requirements	CPU	2.0GHZ or above (suggested 3.0GHz)
	Memory Size	256MB or above (suggested 1.0GHz)
	Display Card	64M or above
	Supported OS	Microsoft Windows 2000/XP/Vista/7
	Browser	IE6.0/7.0/8.0/Firefox/Safari/Google chrome or other standard browsers
Certification	CE, FCC, RoHS	

8. OBTAINING TECHNICAL SUPPORT

We hope your experience with your IP network camera is enjoyable, but if you experience any issues or have any questions that this User's Guide has not answered, please email us.

If your camera does not support some special functions shown in this manual, please contact our technical support team to obtain the latest Firmware and WEB UI file for upgrading.

Statement: If you found any bug of software, pls kindly not discuss in the public place or website, contact us by email or phone, we will give you a quick shot.

FCC Caution

THIS DEVICE COMPLIES WITH PART 15 OF THE FCC RULES.

OPERATION IS SUBJECT TO THE FOLLOWING TWO CONDITIONS:

- (1) THIS DEVICE MAY NOT CAUSE HARMFUL INTERFERENCE, AND
- (2) THIS DEVICE MUST ACCEPT ANY INTERFERENCE RECEIVED, INCLUDING INTERFERENCE THAT MAY CAUSE UNDESIRE OPERATION.

This equipment generates and uses radio frequency energy, and if not installed and used properly, that is, in strict accordance with the manufacturer's instructions, it may cause interference to radio and television reception. It has been type tested and found to comply with the limits for remote control devices in accordance with the specifications in Sub-Parts B and C of Part 15 of FCC Rules, which are designed to provide reasonable protection against such interference in a residential installation. However, there is no guarantee that interference will not occur in a particular installation. If this equipment does cause interference to radio or television reception, which can be determined by unplugging the equipment, try to correct the interference by one or more of the following measures.

- Reorient the antenna of the radio/TV experiencing the interference.
- Relocate the equipment with respect to the radio/TV.
- Move the equipment away from the radio/TV.
- Plug the equipment into an outlet on a different electrical circuit from the radio/TV experiencing the interference.
- If necessary, consult your local dealer for additional suggestions.

NOTE: Modifications to this product will void the user's authority to operate this equipment.