

PKBRTP99 - PKBRTP299 **nutri**chef

Homebrew Double Wall Mini Keg Beer Dispenser

USER MANUAL

UNIT OPERATION INSTRUCTION



1. Mini keg Growler
2. Cap Spear Body
3. Gas In Connection Tube
4. Pressure Relieving Valve 30PSI.
5. Cross-bar
6. Regulator Base
7. 30 PSI Pressure Gauge
8. CO2 Regulator Knob
9. CO2 Regulator Aluminium Body
10. Black Plastic Tap Handle.
11. Chrome Plated Faucet Body
12. Beer Tube

PART ONE: **SPEAR ACSEMBLY**

1. Please clean mini keg, cap, spear body, faucet and beer hose with warm water and mild soap before use.
2. Fill your mini keg at your favourite craft brewery, or with your own homebrew.
3. Cut beer hose according to keg height and insert into spear, make sure hose can touch bottom of keg without overlong or over short.



Remark: If hose is too short, beer would not be tapped completely. But if hose is too long, it may crimp inside the keg, also cause incomplete tapping.

4. Fit tube on to spear, and screw spear into mini keg.



5. Check whether the regulator knob is in OFF position. If not, please follow arrow mark instruction to turn the regulator knob counter clockwise to the OFF position.



6. Turn in a new 16g CO2 capsule with thread type of 3/8-24UNF, turn clockwise firmly into the regulator base.



NOTE: DON'T stop turning if you hear a slight gas leak swish, finish turning it in all the way it seal properly.

PART TWO: **TAPPING**

1. Connect the regulator with capsule to the spear.



2. Install faucet into spear body, make sure the connection is proper and tight.



Remark: Improper combination would cause leakage of beer.

3. Pull on pressure relieving ring for a couple of seconds. If the keg was shaken in transit or warmed, it may contain excessive pressure which must be relieved before tapping. A hissing noise is expected.



4. Slowly turn the regulator knob in clockwise direction to 5 PSI, and stop for 2 seconds and turn off regulator.

Wait for 2 mins, then pull on the pressure relieving ring for a couple of seconds. This is for adjusting pressure of keg beer.

- Put a glass or pitcher under the faucet spout, with the faucet knob pulled forward (ON), slowly turn the regulator knob on in clockwise direction, until beer starts to flow out. Don't continue adding pressure, suggest tapping 5-8 PSI (Max pressure 30 PSI), so please stop turning the regulator knob when the pressure is enough to tap beer out with perfect foam. Too much pressure would cause over foam. When the beer stopped or flow slower, try turning the regulator knob on slowly, to get bigger pressure.



- When you finish tapping, please turn regulator knob to OFF position.
- If there is no beer flowing out, then the CO2 capsule needs to be replaced, unless no beer is remained (Normally, 16g capsule can tap 4-5 liters of beer).

Caution: Removing a punctured capsule from regulator should be done slowly. Swish is expected if pressure remains.

- Turn the regulator knob off and install a new capsule into the regulator by following above steps.

TROUBLE SHOOTING GUIDE

1. Faucet Leakage

Solution: Screw out and remove the faucet, then install again, make sure the faucet can match the connection of spear tightly.



2. Too much Foam

Solution: Decrease the pressure properly.

3. Leakage of CO2

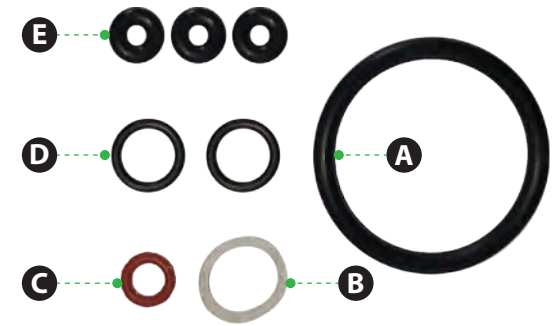
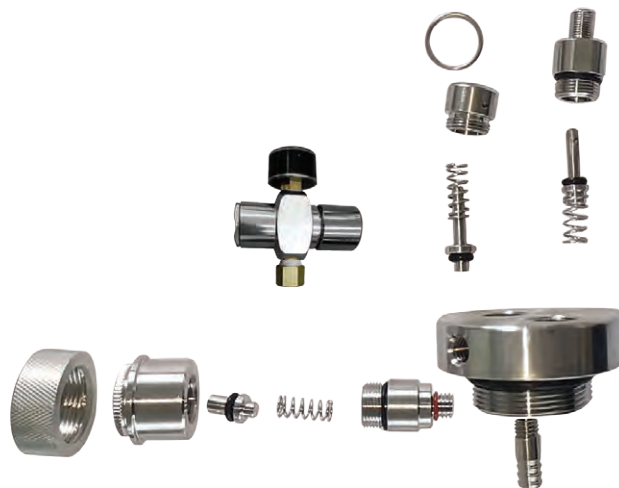
CO2 capsule should be installed properly and tightly.

In case there is CO2 leakage, please observe the position of leakage and continue with the tightening process, but never screw out if gas remains.

PART FOUR: WARNING

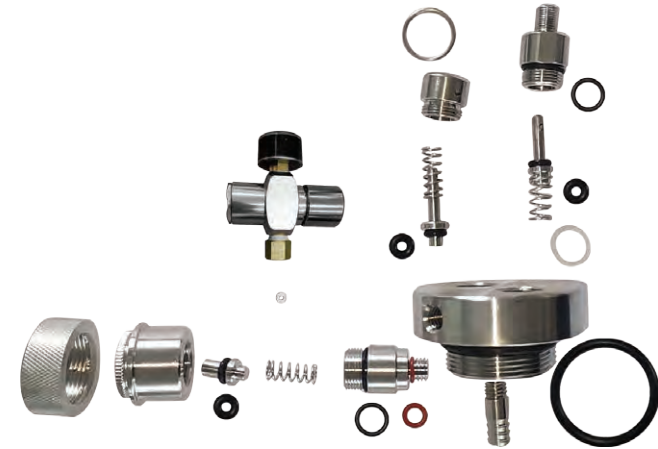
- Keep away from children under 18.
- Never point cylinder towards someone's face.
- Do not heat over 140°F as rupture may occur!
- Discontinue using of this equipment if unsolvable leakage or visible damage is found.
- Capsule end become punctured when turned into regulator base. Unscrewing before it's empty can result in loss of high pressure gas. Please remember, never unscrew the CO2 capsule before gas used up, liquid CO2 spray onto unprotected skin may cause freezing burns.
- Exterior of capsule may become frozen when in use, this is normal. But don't touch with bare hands, your fingers could stick to the frozen surface and cause frostbite.
- Please ship via land or sea shipment, never bring CO2 capsule when you travel by air.

O RING INFORMATION:



- A 35x3.1 MM (1pcs)
 - B 13x10x2 MM (1pcs)
 - C 8x1.5 MM. (1pcs)
 - D 11x1.5 MM (2pcs)
 - E 8x2.5 MM (3pcs)
- (Out Diameter* Thickness)

O RING ASSEMBLY:



Questions? Issues?

We are here to help!

Phone: (1) 718-535-1800

Email: support@pyleusa.com



WARNING:

This product can expose you to a chemical or group of chemicals, which may include "Chromium" which is known in the state of California to cause cancer, birth defects, or other reproductive harm. For more info, go to <https://www.p65warnings.ca.gov/>.