



Please read through the Instructions before use and keep it properly
If there is any difference between the product and the pictures herein, the product shall govern.

(The technical specifications in the instructions are subject to change without notice)

Contents

| | |
|---|---|
| Chapter I Safe Use | 3 |
| Chapter II Components and Functions | 4 |
| Chapter III Usage | 5 |
| Chapter IV Cleaning and Maintenance | 6 |
| Chapter V Safety Indicators | 6 |
| Chapter VI Failure Analysis and Troubleshooting | 7 |

CHAPTER VI FAILURE ANALYSIS AND TROUBLESHOOTING

| MALFUNCTION | CAUSE | SOLUTION |
|-----------------------|-------------------------|-------------------------|
| PRODUCT DOES NOT WORK | NOT PLUGGED IN PROPERLY | RE-INSERT THE PLUG |
| | DAMAGED PLUG | TAKE TO LICENSED REPAIR |
| | NO ELECTRICITY | CHECK PLUG |

Note: If any of the above failures cannot be eliminated or there is any other failure, please contact the maintenance point or distributor of our company. Any person other than professionals shall not disassemble this product without permission.

CHAPTER IV CLEANING AND MAINTENANCE

- 1. Before cleaning products, be sure to turn off the switch, and disconnect the power supply.
- 2. Clean immediately after each use of the product.
- 3. This product should be stored in a dry place; avoid direct exposure to the sun's ultraviolet rays.
- 4. Before the storage products, should ensure that the product is clean and dry.
- 5. Please remove the tray and rotating bracket, reoccupy wet cloth to wipe clean the host.

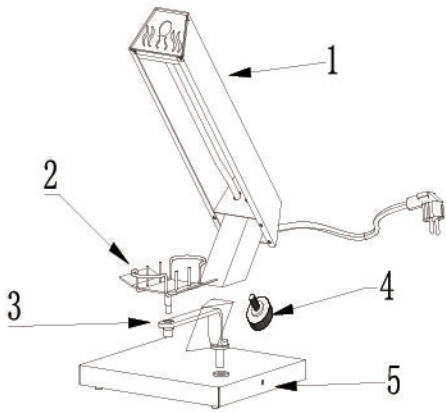
CHAPTER V SAFETY INDICATORS

| | |
|----------------------------|------------------|
| Product Model: | PKCHMT24 |
| Rated Power: | 500 Watts |
| Rated Voltage: | 100-130V 50/60Hz |
| Continuous Operating Time: | 4 Hours |
| Cooldown interval: | 1 Hour |

CHAPTER I SAFETY PRECAUTIONS

- This appliance can be used by children aged from 8 years and above and persons with reduced physical, sensory or mental capabilities or lack of experience and knowledge if they have been given supervision or instruction concerning use of the appliance in a safe way and understand the hazards involved. Children shall not play with the appliance. Cleaning and user maintenance shall not be made by children unless they are older than 8 and supervised.
- Keep the appliance and its cord out of reach of children less than 8 years.
- The appliances are not intended to be operated by means of an external timer or separate remote-control system.
- The outer surface may get hot when the appliance is operating.
- The surfaces are liable to get hot during use.
- This appliance is intended to be used in household and similar applications such as:
 - staff kitchen areas in shops, offices and other working environments;
 - farm houses;
 - by clients in hotels, motels and other residential type environments;
 - bed and breakfast type environments.
- If the supply cord is damaged, it must be replaced by the manufacturer, its service agent or similarly qualified persons in order to avoid a hazard.
- This product input voltage for AC120V, 50/60 Hz, please confirm again after use.
- Before disassembly and assembly or calibration products or any components, please be sure to disconnect the power supply.
- Before use, please check whether the power cord, plugs, and other parts are damaged. If found damaged, please stop using the product and seek professional replacement.
- DO NOT use allow any parts of the body to come in direct contact with the hot surface, in order to avoid scaldings.
- Do not immerse the product into water or other liquid.
- Product should be stored outside the reach of children, or those with disabilities.
- This product is suitable for family use only.
- Please don't use wet hand during the work, do not move the machine when powered on.
- Don't let the power cord fall into the water. Otherwise it will reduce the insulation performance. Or increase the risk of arc starting, short circuit, and leakage.
- Use shall be indicated with the unit of voltage of power grid voltage, and avoid sharing a socket with other appliances.
- Avoid leaving the power cord hanging off the edge of the table or cabinets, lest a child knock it down.
- Never allow children to use alone in order to avoid scalding children.
- This product appliance tray before should be used for the first time after water boiling disinfection.

CHAPTER II COMPONENTS AND FUNCTIONS



| NO. | COMPONENT | FUNCTION |
|-----|----------------------|----------------------------|
| 1 | Main Engine | Heat Food |
| 2 | Serving Dish | Contain Food |
| 3 | Tray Rotating Stents | Fixed Tray Rotation |
| 4 | Screw Nut | Connects the base and host |
| 5 | Pedestal | Base |

CHAPTER III USAGE

Before installation, ensure that the product is not switched on.

Warning :

- 1. Choose a suitable place. It must meet the following conditions: the space above the product not less than 100 cm, the back of the product and the clearance of the wall not less than 25 cm.
- 2. Put the cheese machine base on the balance on the desktop, and then install the host on the base of aluminum piece of fixed link, with a fixed nut to twist it.
- 3. Put the tray rotating bracket base fixed axle hole inside, then put the cheese tray in turn stand collar.
- 4. Before using the product for the first time, you'll need to turn on the switch and preheat for 3 minutes. The gas odor and smoke produced by the protective layer is normal.
- 5. The heating element and temperature is the most scientific and professional baking temperature - cannot be adjusted.
- 6. Once the cheese melts, you can allow the cheese to melt to plate, or remove the top layer every 4 to 5 minutes.