



*PKHTWTR46*

Countertop Hot Water Boiler

Digital Hot Water Dispenser

USER MANUAL

**IT IS ESSENTIAL THAT THIS APPLIANCE IS INSTALLED CORRECTLY.  
INSTALLATION SHOULD COMPLY WITH ALL LOCAL ELECTRICAL,  
HEALTH AND SAFETY REQUIREMENTS.**

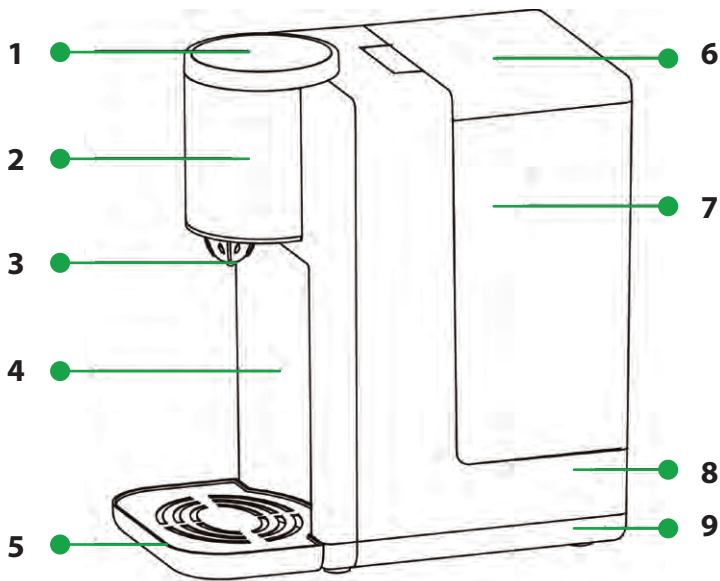
• **IMPORTANT SAFEGUARDS**

*When using electrical appliances, basic safety precautions should always be followed to reduce the risk of fire, electric shock, and/or injury to persons, including the following:*

1. **Read all instructions before using the machine**
2. Before using the appliance, ensure that the voltage indicated on the appliance data plate corresponds to the domestic supply voltage. If not, please do not operate and contact your local distributor for proper replacement.
3. Please check if the power cord, plug and control panel is loose or damaged or if the housing is cracked or deformed due to the heavy hit, **please do not use the appliance.** if in any above cases, contact your local distributor immediately.
4. Do not operate the appliance without less water level to avoid damaging the heating elements.
5. Do not let cord hang over edge of table or counter, or touch hot surfaces.
6. Do not place this appliance on or near a hot gas or electric burner or in a heated oven.
7. Do not put the appliance into a working disinfection cabinet.
8. Do not allow your appliance to freeze. If this happens, do not operate the appliance and contact the manufacturer.
9. Do not lean the appliance or operate it upside down.
10. Do not use outdoors.
11. This appliance is not intended for use by persons (including children) with reduced physical, sensory or mental capabilities, or lack of experience and knowledge, unless they have been given supervision or instruction concerning use of the appliances by a person responsible for their safety.

12. Make sure to operate the appliance when children is under good custody.
13. Children shall not play with the appliance.
14. Please ensure the appliance is used on a firm and flat surface and out of reach of children, to avoid being overturned in a sudden and result in the scald or hitting injury.
15. To protect against a fire, electric shock or other personal injury, do not immerse any part of the appliance in water or other liquid.
16. Do not touch the hot surface, water spout when the appliance is operating.
17. While the appliance is under working, do not touch or block the steam outlet by hand or other stuff, do not open the water tank lid in a rush, in order to avoid being scalded by the hot steam or cause any other malfunctions.
18. To avoid being scalded when the water boiler is in operation or has been switched off, keep hands away from any steam.
19. Do not use the appliance to heat anything other than water. Do not fill above the "max" indication. Do not operate it if water is below minimum.
20. Unplug from the outlet before cleaning. Allow to cool before putting on or taking off parts and before cleaning.
21. If the supply cord is damaged, it must be replaced by the manufacturer or its service agent or a similar qualified person in order to avoid any hazard.
22. The power cord could only be replaced by the exclusive power cord if any damages.
23. Do not operate any appliance with a damaged cord or plug or after the appliance malfunctions, or has been damaged in any manner. Return this appliance only to the nearest authorized service center for examination, repair or adjustment.
24. This appliance is intended to be used in household and similar locations such as:
  - staff kitchen areas in shops, offices and other working environments;
  - farm houses;
  - by clients in hotels, motels and other residential type environments;
  - bed and breakfast type environments.
25. **SAVE THESE INSTRUCTIONS**

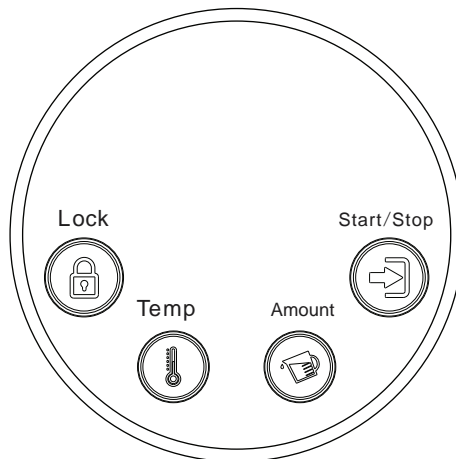
• **DIAGRAM OF PARTS**



- 1. Control Panel
- 2. Decorative Ring
- 3. Spout
- 4. Front Cover
- 5. Tray

- 6. Tank Cover
- 7. Tank
- 8. Main Body
- 9. Base

• **CONTROL BUTTON DETAILS**



**Lock Button:** Press the lock button for 3 seconds to unlock, locked without any activity within 10 seconds, you can lock the screen free by pressing Confirm button.

**Temp. Button:** Set the desired temperature according to 115°F(45°C), 130°F(55°C), 150°F(65°C), 165°F(75°C), 185°F(85°C), 212°F(100°C), '000' (indicates room temperature water)

**Amount Button:** Set the water volume according to 0, 4, 8, 12, 16 oz. (dispense water continuously)

**START/STOP Button:** Start and stop function setting.

## • HOW TO USE

Clean your electric Hot Water Dispenser before first use. Unplug from the outlet before cleaning. Allow to cool before putting on or taking off parts and before cleaning. Wipe the water tank and polish with a soft damp cloth and dry thoroughly. Fill with clean water to clean and repeat the same steps for several times. Fill tank with water if ready for operation.

### Tips:

#### First use of the appliance:

Please operate it in accordance with the following steps:

- Press the Lock button for about 3 to 5 seconds to unlock the appliance.
- Please choose 100 degree Temp setting and 000
- Set the Amount setting to operate the appliance for 1-2 minutes until the detection of boiling point is finished.

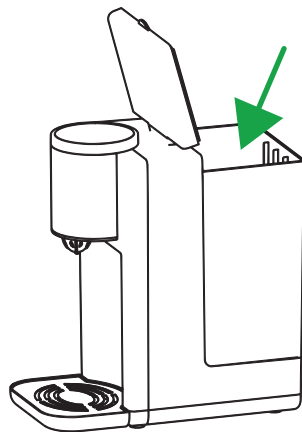
The appliance is ready for use - set the Temp and Amount to desired settings.

#### 1. Fill in water

Open the lid, fill the water tank with the desired amount of water, and then close the lid.

**Note:** the water level must be less the Max level.

**Tips:** It is Suggested to use purge water for the appliance

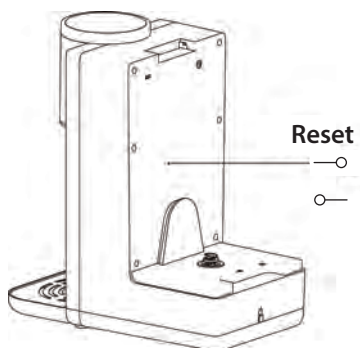


## • Obtain Desired Water

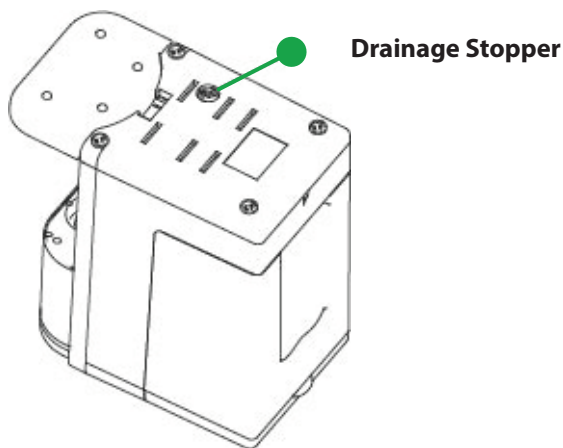
Make sure the plug is connected to the proper wall outlet, and fill in the water with desired amount. Place your cup on the removable water tray, make sure it aligns with the spout. Firstly press the lock button for 3-5 seconds to open by finger. Temp. and Amount setting indicator lights up, and then the Temp. button to choose your desired temperature and press the Amount button to set right water volume. Press the **Start/Stop** button to operate the appliance. For 5-8 seconds, the desired water will flow out continuously from water spout. When you obtain desired water, press the **Start/Stop** button, the appliance will stop working at once, If you want to obtain water again, only repeat the above procedure.

## Remarks

- Do not touch the boiled water and steam in order to protect against the scald by the boiled water and hot steam.
- If the appliance stops operating and you hear a beep sound and the PCB panel shows E7 symbols, which means lack of water and you need to pour cool water in the water tank immediately.
- The appliance can memorize the last operation method anytime without disconnecting the plug.
- As the appliance has memory function when connecting to plug, please use about 60 seconds first in order to obtain desired temperature water, saved memory will be lost when unplugged.
- As ambient temperature changes everyday, the water volume will undulate within -15% to +15%
- **The appliance have manual thermostat to recover the heating function for abnormal operation, if the unit doesn't power ON, stop working, do not boil water and reset the thermostat by the reset key easily.**

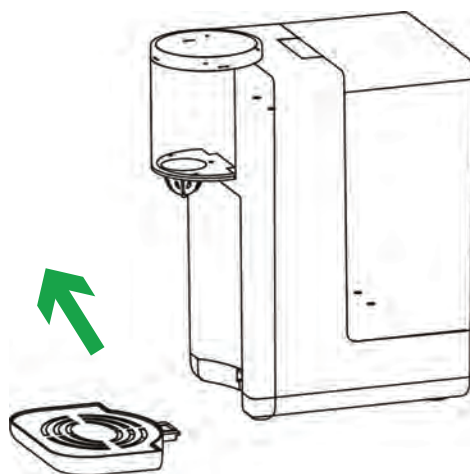


- After cleaning the appliance, please open the drainage stopper in order to clean up waste water. Tighten the drainage stopper after opening it.
- Note:** If found water leakage from the bottom, tighten the drainage stopper.
- You can remove the spout so as to clean up scale deposit.



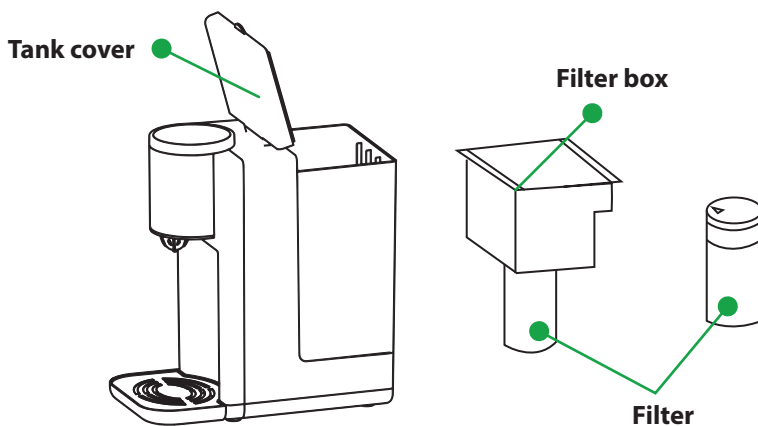
#### • **Water disposal from the water tray**

When the water tray is full, to grasp and stabilize the appliance by one hand, use another hand to lift up the water tray slightly to remove it, empty the water tray and insert it into the original place with proper force.



#### • **Replace the filter (Attachment as per requirement)**

Open the tank cover, and take out the filter box with filter. Go off with the old filter and use the new filter instead. (See photo)



### • Cleaning and Maintenance

1. Always switch **OFF** and unplug your water dispenser and allow it to cool completely before cleaning.
2. Do not immerse the appliance into any liquid to avoid the damage.
3. To maintain it's performance, suggest to descale the appliance at least once every month. Please use a toxic free detergent such as citric acid. Add some citric acid into water. Operate the appliance three times then the scale will be out completely. After the completion, pour out all the boiled water and add pure water to operate the appliance before you drink. Theres no need to descale if pure or filtering water is being used.
4. Do not use any chemical, metal, wood or abrasive detergent to clean the appliance housing, always use a damp cloth.
5. Always handle the appliance gently, do not place it near the edge of the table or counter and to protect against deformation or function damage in case it falls down from the table accidentally.

### • Storage

If the appliance will not be used for a long time, unplug and clean it, then put it back into the original packing box to avoid the electrical components to be humidified or damaged.

### Environment Friendly Disposal



You can help protect the environment!

**Please remember to respect the local regulations:**

Hand in the non-working electrical equipments to an appropriate waste disposal center.



## PKHTWTR46

### Countertop Hot Water Boiler

Digital Hot Water Dispenser

#### System Features:

- Instantly Heat & Dispense Hot Water!
- Super Quick 5-Second Water Boil Ability
- Hassle-Free Digital Touch Button Controls
- Simple Electric Plug-in Design
- Built-in LED Light Illuminates When Dispensing
- Adjustable Water Temperature & Dispensing Amounts
- Includes Replaceable Aqua-Purify Water Filter
- Convenient Easy Access Refillable Water Tank
- Transparent Water Container with Clear Level Mark
- Audio Alert Sound Indication for Low Water Levels
- Removable Drip Tray for Easy Clean-Up
- Safe for Placement on Any Table or Countertop
- Used for All Drinks Including Instant Coffee, Tea & Soups!
- \*Replaceable Water Filters Available (NutriChef Model: 'PRTPKHTWTR46')

#### What's in the Box:

- Hot Water Dispenser
- Water Filter
- Drip Tray

#### Technical Specifications:

- High-Powered Heating: 1800 Watt
- Construction Materials: Engineered ABS, PP, Stainless Steel
- Water Tank Capacity: 2.3 Quart
- Power Cord Length: 2.8' ft.
- Power Supply: 120V
- Total Dimensions (L x W x H): 10.7" x 6.6" x 12.0" -inches

# nutrichef



**VISIT US ONLINE:**

*Have a question?*

*Need service or repair?*

*Want to leave a comment?*

**[PyleUSA.com/ContactUs](http://PyleUSA.com/ContactUs)**

**PYLE**