

nutrichef



## *PKNESPRES065*

Milk Frother & Milk Warmer  
with Hot or Cold Froth Ability, Stainless Steel

USER MANUAL

## IMPORTANT SAFEGUARDS

### WARNING:

WHEN USING ELECTRICAL APPLIANCES, BASIC SAFETY PRECAUTIONS SHOULD ALWAYS BE FOLLOWED, INCLUDING THE FOLLOWING:

### READ ALL INSTRUCTIONS CAREFULLY.

1. Do not touch hot surfaces. Use handles or knobs.
2. To protect against fire, electric shock, and injury to persons, do not immerse cord, plug, or non-stick carafe or base in water or other liquid.
3. This appliance is not intended for use by young children or infirm persons unless they have been adequately supervised by a responsible person to ensure that they can use the appliance safely , Young children should be supervised to ensure that they don't play with the appliance .
4. Unplug from outlet when not in use and before cleaning. Allow to cool before putting on or taking off parts, and before cleaning.
5. Do not operate any appliance with a damaged cord or plug or after the appliance malfunctions or has been damaged in any manner. Bring it to a qualified technician for examination, repair or electrical or mechanical adjustment.
6. The use of accessory attachments not recommended by the appliance manufacturer may result in fire, electric shock or injury.
7. Do not use outdoors.
8. Do not let the cord hang over the edge of a table or counter or touch hot surfaces.
9. Do not place on or near a hot gas or electric burner, or in a heated oven.
10. Do not use the Milk Frother other than for heating milk .
11. Milk can remain hot for some considerable time. Do not touch the jug while heating as it is hot.
12. Do not remove the lid during heating or frothing or while the Milk Frother is in operation as scalding may occur.

## ADDITIONAL IMPORTANT SAFEGUARDS

1. Do not use the Milk Frother to heat oil, or to melt butter.
2. Use the Milk Frother for heating milk or half-and-half ONLY. Do not use it to cook, whisk or heat any other foods. Use water to clean as described in the Care & Cleaning Instructions in this instruction manual.
3. Do not place any container inside the Milk Frother-milk must be removed from the packaging, container, can, etc. before being put into the carafe.
4. Before serving, or removing contents, remove carafe from base and unplug cord from electrical outlet.
5. Do not use the appliance to warm milk for baby.

## FOR HOUSEHOLD USE ONLY SAVE THESE INSTRUCTIONS

### KEY TO SYMBOLS



#### CAUTION

This is the safety warning symbol. It is used to call your attention to possible risks of personal injury.

To avoid possible injury or death, always follow all procedures outlined in this Instruction Book.



#### IMPORTANT! READ THESE INSTRUCTIONS.



#### Not dishwasher safe.

## IMPORTANT SAFEGUARDS

### Notes on the Cord

The provided short power-supply cord (or detachable power-supply cord) should be used to reduce the risk resulting from becoming entangled in or tripping over a longer cord. Do not use an extension cord with this product.

### Notes on the Plug

This appliance has a grounded 3-prong plug. Connect to a properly grounded outlet only. Do not attempt to modify the plug in any way.

### Plasticizer Warning

**CAUTION:** To prevent plasticizers from migrating to the finish of the counter top or table top or other furniture, place NON-PLASTIC coasters or place mats between the appliance and the finish of the counter top or table top. Failure to do so may cause the finish to darken; permanent blemishes may occur or stains can appear.

### Electric Power

If the electrical circuit is overloaded with other appliances, your appliance may not operate properly. It should be operated on a separate electrical circuit from other appliances.

**Voltage Supply: 220-240V~ 50Hz. Power: 450W**

**Minimum Capacity:** 80ml.

**Maximum Capacity:** 150ml for milk frothing.  
300ml for milk warming.

**Dimensions:** 193mmX 208mmX 134mm

## MAIN PARTS INTRODUCTION



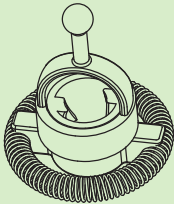





## BEFORE USING FOR THE FIRST TIME

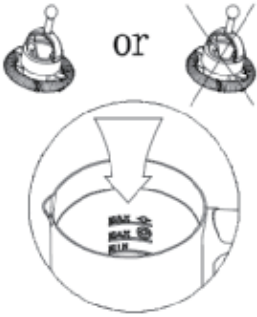
1. Remove all packaging from the Milk Frother and its power base.
2. Position the power base on a flat, heat-resistant surface, as close to an electrical outlet as possible. Make sure the power base is unplugged.
3. Remove the Milk Frother from its power base and take off the lid.
4. Read the rating in the base of the unit to make sure the power of the unit is comply with your local civil electric.
5. Using a cup to fill the non-stick carafe with water up to the lower MAX line.
6. Gently position the carafe over the electrical connector on the power base.
7. To avoid spillage, make sure the lid is in position before turning the Milk Frother **ON**.
8. Plug the power cord into the electrical outlet, one beep sound is emitted.
9. Press the **ON/OFF** button quickly. The indicator will illuminate in red and the Milk Frother starts to work in heating and frothing mode.
10. When the water has been warmed up, the milk Frother will turn itself **OFF** automatically and the power light will go out with 2 beep sound.
11. Discard the warm water and the unit is ready to work with milk.

### CAUTION:

**Always remove the Milk Frother's jug from its base when pouring.  
Not recommended to warm milk for baby.**

## USING THE MILK FROTHER

Function	Whisk option	Max capacity (marked with circle)	Time
To make cold, frothed milk		<u>MAX</u>  ✓ <u>MAX</u> 	~80~100s
To make hot, frothed milk		✓ <u>MAX</u>  <u>MAX</u> 	~130~180s



Step:1



Step:2



Step:3

1. Choose the appropriate whisk and insert it on the whisk head inside the jug. (see the table above for reference).
2. Pour milk into the jug according to the max & min markings. (See the max capacity for each whisk type above for reference), place the jug on power base. Place the lid securely
3. Choose the mode you want to make with the milk.

**a. To make Cold, Frothed Milk:**

Make sure you have inserted the Whisk (whisk with wire spring) and ensure the jug is filled with milk up to the Lower MAX level (150ml.) or at least filled to Min mark. then check that the lid is securely in place, afterward, press and hold the **ON/OFF** button for 3 seconds till the blue light turns on to start frothing, once the frothing process is completed, the blue light will turn off automatically, now, the frothed milk is ready.

**b. To make hot, Frothed Milk:**

Make sure you have inserted the Whisk(whisk with wire spring) and ensure the jug is filled with milk up to the Lower MAX level(150 ml.) or at least filled to Min mark. then check that the lid is securely in place, afterward, press the **ON/OFF** button briefly, the red light turns on to start frothing, once the frothing process is completed, the red light will turn off automatically, now, the hot & frothed milk is ready.

**c. To make Hot Milk:**

In this mode, the whisk is not necessary, so, make sure the whisk is removed, and the jug is filled with milk up to the upper MAX level (300ml Max.) or at least filled to Min mark. then check that the lid is securely in place, afterward, press the **ON/OFF** button briefly, the red light turns on to start heating milk, once the heating process is completed, the red light will turn off automatically, now, the hot milk is ready.

**CLEAN THOROUGHLY AFTER EACH USE.**



## USER MAINTENANCE INSTRUCTIONS

This appliance requires little maintenance.

It contains no user serviceable parts. Do not try to fix it by yourself.

Refer it to a qualified appliance repair technician if servicing is needed.

## Care & Cleaning Instructions

### NOTE:

*To reduce build-up of milk residues, always empty any residual milk and clean immediately after frothing completed. Never leave liquid in the carafe overnight.*

1. Unplug the power base from the electrical outlet and let the carafe cool down completely before cleaning.
2. Clean the inside of the jug with a damp & soft cloth, or sponge.  
Only the whisk can be detached to resin with water.
3. If necessary, put on the whisk attachment to the whisk head, fill fresh clean water to maximum level, then add a couple drops of mild liquid soap. Turn the Milk Frother ON and allow the soapy water to clean the jug. After the Milk Frother turns itself OFF, discard soapy water.  
Pour fresh clean water into the jug and discard; repeat until soap residue is completely removed. Wipe out with damp cloth.

### WARNING:

**DO NOT SUBMERGE JUG OR THE POWER BASE IN WATER OR ANY OTHER LIQUID. NEVER PLACE THE JUG UNDER RUNNING WATER TO CLEAN. DO NOT PLACE INTO DISHWASHER.**

4. Make sure that all connectors and sockets are kept dry.
5. Rinse lid and whisks in clean water and dry thoroughly.
6. The following parts should avoid to contact with water.

## STORING INSTRUCTIONS

Unplug unit and allow to cool. Store in its box or in a cool and dry place. Never store unit while it is still plugged in. Never wrap cord tightly around the appliance. Do not put any stress on the cord where it enters the appliance as it may cause the cord to fray and break.

TROUBLE SHOOTING	
ISSUES	SOLUTIONS
Not be able to start	Check the power is corresponding to your civil electricity.
	The jug is placed on its original base, not kettle's base.
Poor quality of milk after frothed.	Check if the proper whisk is used or not.
	Make sure adequate cleaning has been implemented after the last use. The dried residual milk may stall the frothing speed.
	Suggested to use whole or semi-skimmed milk, stored at refrigerator at 6~10 degree.
Red light blinking	The unit is hot after operation, cool it down by filling tap water into jug.
Purple light illumination	Call service line.
Over flow	Check if proper quantity of milk was added corresponding to the whisk.

# PKNESPRESO65

## Milk Frother & Milk Warmer

with Hot or Cold Froth Ability, Stainless Steel

### Features:

- 2-in-1 Milk Frother & Warmer
- Choose Your Froth: Creates Hot or Cold Milk Froth!
- Simple Electric Plug-in Design
- Sleek, Modern Kitchen Style
- Quick Heat Ability, Warms in Seconds
- Transparent Lid to see the Frothing
- LED Indicator Light
- Convenient Grip Handle
- Double Wall Insulation Container
- Stain-Resistant & Easy-to-Clean
- Removable Parts for Hassle-Free Clean-Up
- Energy Efficient Auto Power-Off Feature
- Built-in Safety: Dry Boil Protection

### What's in the Box:

- Milk Frother Kettle
- Heating Base Plate

### Technical Specs:

- Power Rating: 450 Watt
- Milk Frothing Capacity: 5.1 oz.
- Milk Warming Capacity: 10.1 oz.
- Milk Heating Temperature: Approx. 158° Fahrenheit (70° C)
- Construction Material: Stainless Steel Housing
- Power Cord Length: 2.8' ft.
- Power: 110V
- Dimensions (L x W x H): 6.6" x 4.7" x 8.2" -inches



nutrichef