

PKST64

Heavy-Duty Keyboard Stand

Heavy-Duty Keyboard Stand - Height Adjustable Music Stand with 2nd Tier

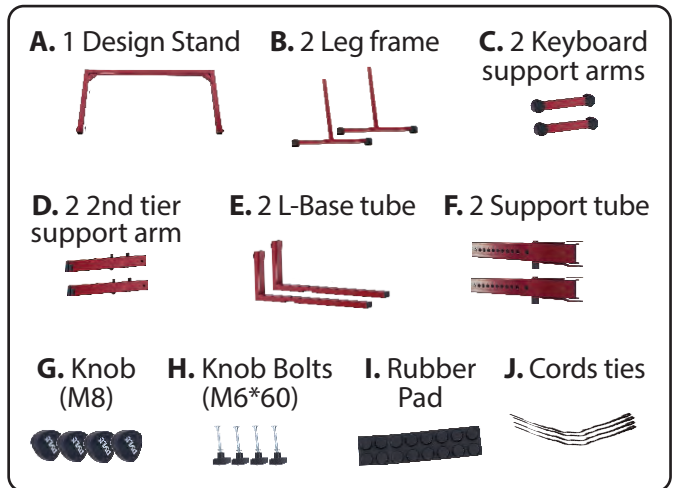
PYLE

PyleUSA.com

User Manual

WHAT'S IN THE BOX:

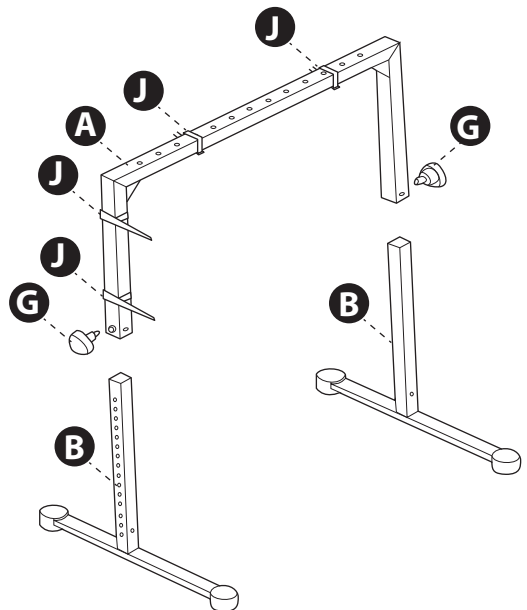
- (1) Design Stands
- (2) Leg frame
- (2) Keyboard support arms
- (2) 2nd tier support arm
- (2) L-Base tube
- (2) Support tube
- Knob
- Knob Bolts
- Rubber Pad
- Cords ties



ASSEMBLY INSTRUCTIONS

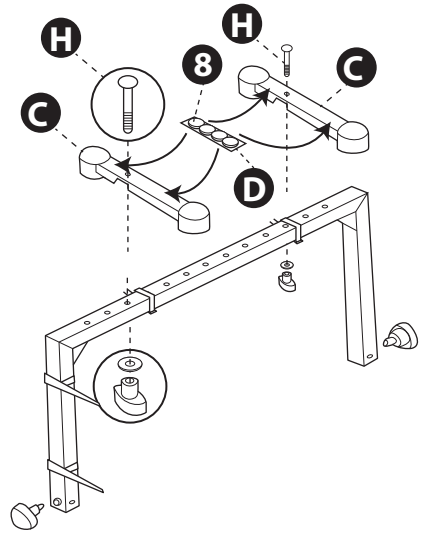
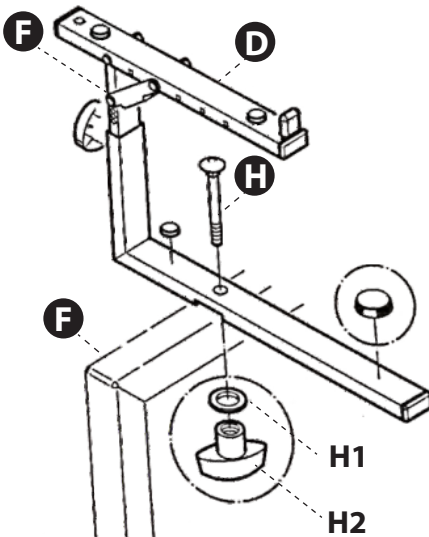
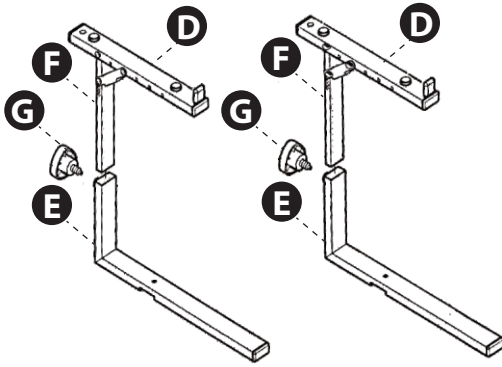
Step 1

- Assemble leg frames B with U frame A (U frame with cable ties). Slot right leg frame B (holes on outer side) into the U frame A. Adjust and fix at desired height by screw in engage and lock knob G.
- The pin of the engage and lock knob G must be submerged in a hole of the leg frame B before being tightened.
- Assemble the second leg frame likewise. Take care to adjust to the same height.



Step 2

- Place a support arm C at the required position on the U frame A.
- Slot a carriage bolt (H) through a support arm C and U frame A.
- Attach the second support arm in the same way.



Step 3

- Assemble 2 2nd tier support arms D with support tubes F, then assemble 2 support tubes F with L- base tubes E, adjust to desired height and angle, tighten with provided knobs G.

Step 4

- Place 2nd tiers at the required positions on the U frame A. Slot carriage bolts (H) through L-base tubes and U frame A.



Questions? Issues?

We are here to help!

Phone: (1) 718-535-1800

Email: support@pyleusa.com



WARNING:

This products can expose you to a chemical or group of chemicals, which may include **"Lead and Cadmium"** which is known in the state of California to cause cancer, birth defects, or other reproductive harm. For more info, go to <https://www.p65warnings.ca.gov/>.

Features:

- Stable and Appealingly Practical Designed
- Four Point Support with Protective Rubber Discs
- Adjustable Height
- Comfortable and Quick with Engage and Lock Knobs
- Ideal for a Second Keyboard or Laptop
- Provides 10 Different Height Adjustment Positions
- Adjustable Stacker Width
- Safe & Reliable Keyboard Placement
- Rugged & Durable Metal Construction
- Quick & Convenient Height Adjustment
- Second Tier with Fully Adjustment for Laptop, Second Keyboard, MIDI, Mixer, ETC.
- Adjustable Rubber Supports to Support Equipment Above
- Easy to Assemble, Easy to Adjust
- Spider Design with Height, Width, and Depth Adjustable
- Folding Design for Travel and Storage
- Designed for Home Studio, Classroom, Stage and Recording

Technical Specs:

- Load Capacity: 177.8 lbs.
- 2nd Tier Stand Load Capacity: 55.5 lbs
- Arms Width: 7", 11.8", 16.5", 21.6", 26.4" and 31" -inches
- Arms Depth: 13.6" -inches
- Adjustable Height: 23.6" x 40.2" -inches in 28 Stages
- 2nd Tier Angle Adjustments (0° -5° -10° -15° -20°)
- 2nd Tier Dimensions (W x H): 10.3" - 14.8" x 4.8" - 28.8" -inches,
(Depth) :15.7" -inches Bottom,13" -inches Top
- Overall Dimensions (L x W x H): 37.4" x 22.4" x 33.7 - 41" -inches (With 2nd Tier)