

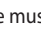




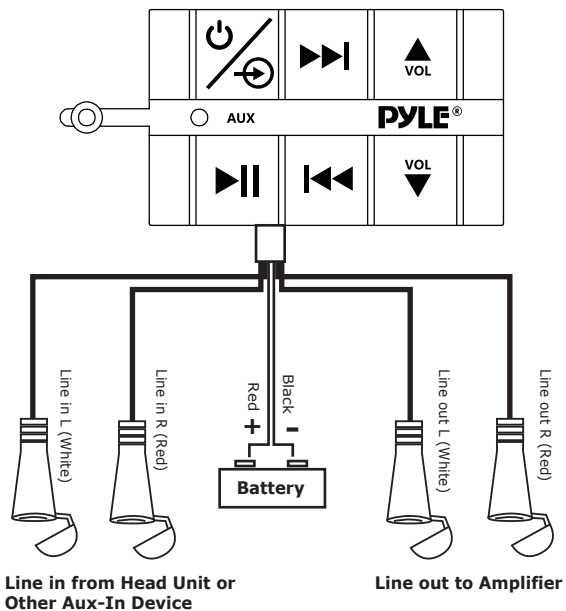


### Playing Music:

1. Press  and hold for three seconds to turn On/Off
2. Press  shortly for control the red background light
3. Press  to start or pause the music
4. Press  shortly for next track
5. Press  shortly for Previous track
6. Press  shortly for volume up
7. Press  shortly for volume down

### Wiring Diagram



**PYLE**<sup>®</sup>  
PyleAudio.com

**PYLE**<sup>®</sup>  
PyleAudio.com

## PLBT27

Universal Bluetooth Receiver Control Adapter/  
Wireless Audio Controller



**OWNER'S MANUAL**

# PLBT27

## Universal Bluetooth Receiver Control Adapter/ Wireless Audio Controller

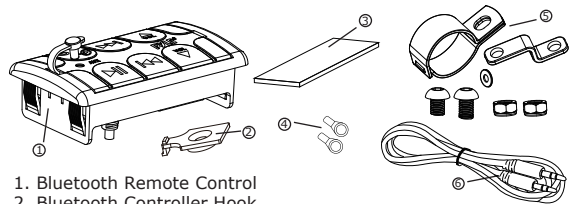
### FEATURES

- Adds Simple & Convenient Remote Music Control
- Built-in Bluetooth for Wireless Streaming Receiver Ability
- Mounts to Handlebars, Dashboards, Consoles, Support Bars
- Universal Mobile Vehicle Controller Design
- NFC (Near Field Communication) Sensor Support
- Instant 'Connect & Stream' Android Device Ability
- Aux (3.5mm) Input Connector Jack
- Ability to Connect Additional External Devices (iPhone, Android, Smartphone, iPad, Tablet, etc.)
- RCA (L/R) Line Input Connector Jacks
- RCA (L/R) Line Output Connector Jacks
- Simple Push Button Controls  
Play, Pause, Previous, Next, Volume Up/Down
- Illuminated Backlit Buttons for Easy Viewing
- Includes All Necessary Cables, Wiring, Mounting Brackets, Hardware
- Used for Motorcycle, Golf Cart, ATV/UTV, Marine Vehicles

### Bluetooth Console Controller:

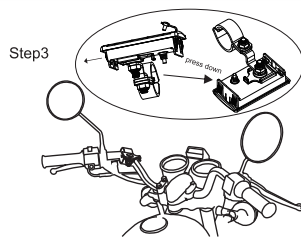
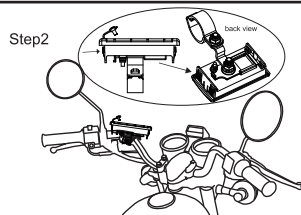
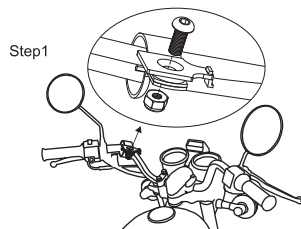
- Acts as the Bluetooth Signal Receiver (Source Unit)
- Ability to Function / Replace the Headunit Receiver
- Bluetooth Version: 3.0
- Bluetooth Network Name: Pyle Audio
- Bluetooth Network Password: 1234
- Dimensions (L x W x H): 3.82" x 2.13" x 1.14"
- Weight: 0.257 lbs.

### WHAT IS INCLUDED?



1. Bluetooth Remote Control
2. Bluetooth Controller Hook
3. Black Industrial Velcro for P Clamp
4. Amplifier 12 Volt (+/-) Ground Blue Spade Terminal
5. "P" and "Z" shaped Clamps for Handlebar
6. Extension wire for 3.5mm Aux-In

### INSTALLATION (MODE 1 "Handlebar Mount")

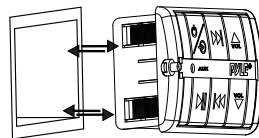


1. Install "P" shaped clamp or "Z" shaped bracket threaded (item #5) on to the Bluetooth controller hook. (packed with Bluetooth controller). Use the provided bolt to fix on the handlebar. The provided foam and rubber pads can be used to accomplish tight and secure mounting.

2. Slide the Bluetooth controller into the hook

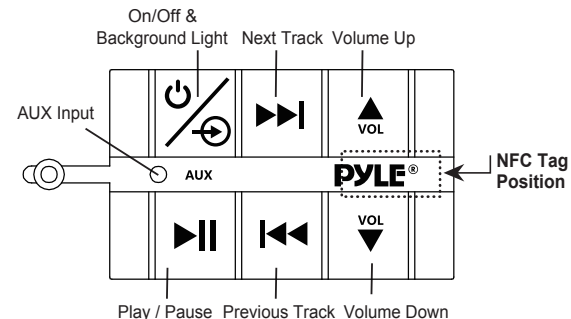
3. Press down the Bluetooth controller hook and then slide out the Bluetooth controller box at the same time to remove the Bluetooth controller

### INSTALLATION (MODE 2 "Push-Fixed in Mount")



Step1 Decide the place for Bluetooth remote installation. Draw and cut the size into 85 x 49mm (L x W)

Step2 Push in the Bluetooth remote



### Bluetooth Pairing and Connection:

1. Connect Bluetooth controller box to your device
2. Press and Hold for three seconds until power indicator lights (red)
3. The system will automatically go into pairing mode The power indicator will turn red for about 4-6 seconds and then alternating red and blue (Bluetooth blue Power red) Please be sure that Bluetooth is turned on your device and Select "Pyle Audio" on your device to connect Bluetooth controller (if the Bluetooth controller is connected, the light will turn blue and not flash)
4. Bluetooth password "1234"
5. When the device is out of Bluetooth range, Bluetooth will be disconnected automatically and automatically reconnect when detected in range again. (If not please just repeat steps 1 and 2)
6. When Bluetooth is disconnected or the 3.5mm AUX Input is plugged in, the power indicator will glow red.

### NFC Pairing and Connection:

1. Have your device touch the NFC tag on the controller and then you will receive the notification to require password
2. Enter the password "1234" to turn on the Bluetooth. (This is only for the first time connection, no need to enter password when connect NFC again)
3. After turn on the Bluetooth function by NFC, the operation procedure is same as the above "Bluetooth Pairing and Connection"
4. Touch the NFC tag again to turn off the Bluetooth function.