

PYLE
PyleUSA.com



PLMRM4BTA

Marine Wireless BT Streaming Amplifier Receiver

Waterproof Rated Amp Audio Control Unit,
MP3/USB/AUX

USER MANUAL

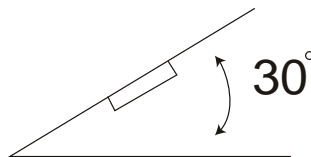
CONTENTS

Installation	3
Wiring Connection	5
Location of Keys	6
Operation	7
USB Play Operation	7
BT Operation	8
Remote Control	9
Troubleshooting	11
Specification	12

INSTALLATION

Notes:

- Choose the mounting location where the unit will not interfere with the normal driving function of the driver.
- Before finally installing the unit, connect the wiring temporarily and make sure it is all connected up properly and the unit and the system work properly.
- Use only the parts included with the unit to ensure proper installation. The use of unauthorized parts can cause malfunctions.
- Consult with your nearest dealer if installation requires the drilling of holes or other modifications of the vehicle.
- Install the unit where it does not get in the driver's way and cannot injure the passenger if there is a sudden stop, like an emergency stop.
- If installation angle exceeds 30° from horizontal, the unit might not give its optimum performance.

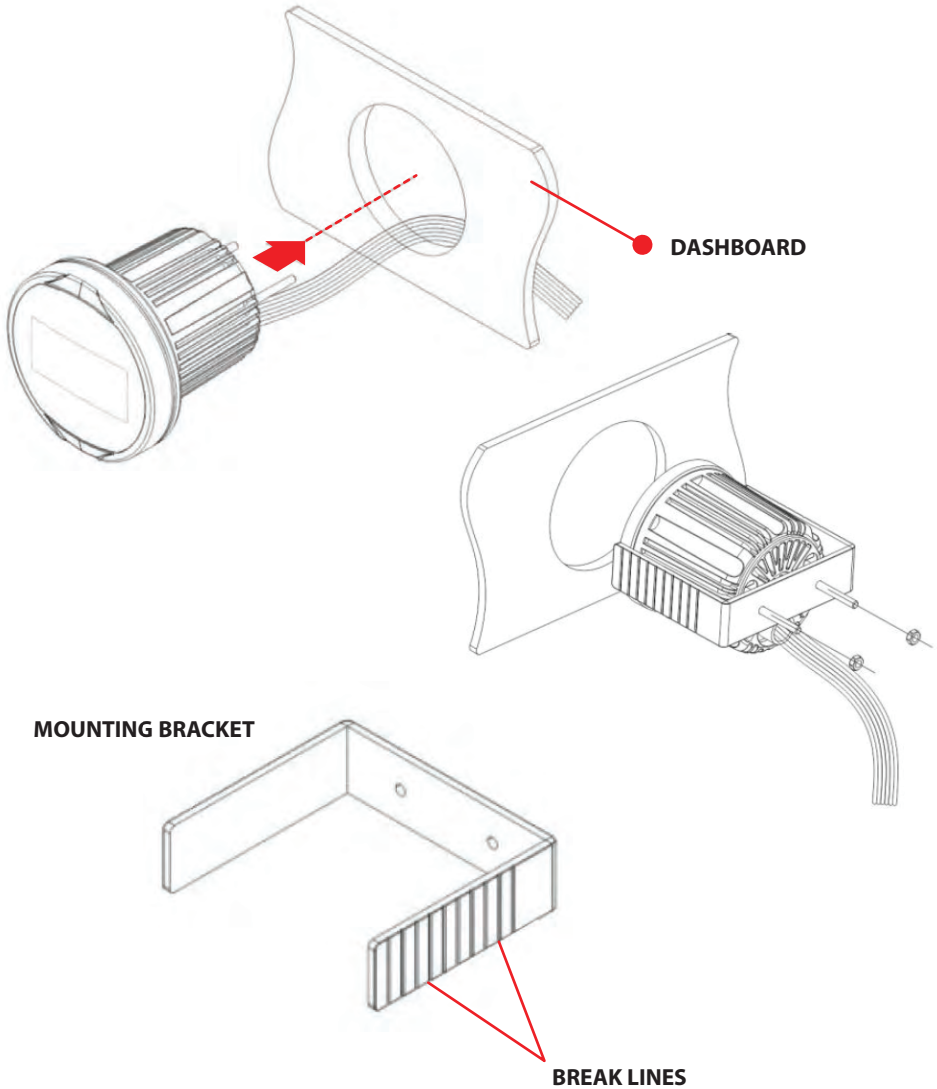


- Avoid installing the unit where it would be subject to high temperature, such as from direct sunlight, or from hot air, from the heater, or where it would be subject to dust, dirt or excessive vibration.

INSTALLATION

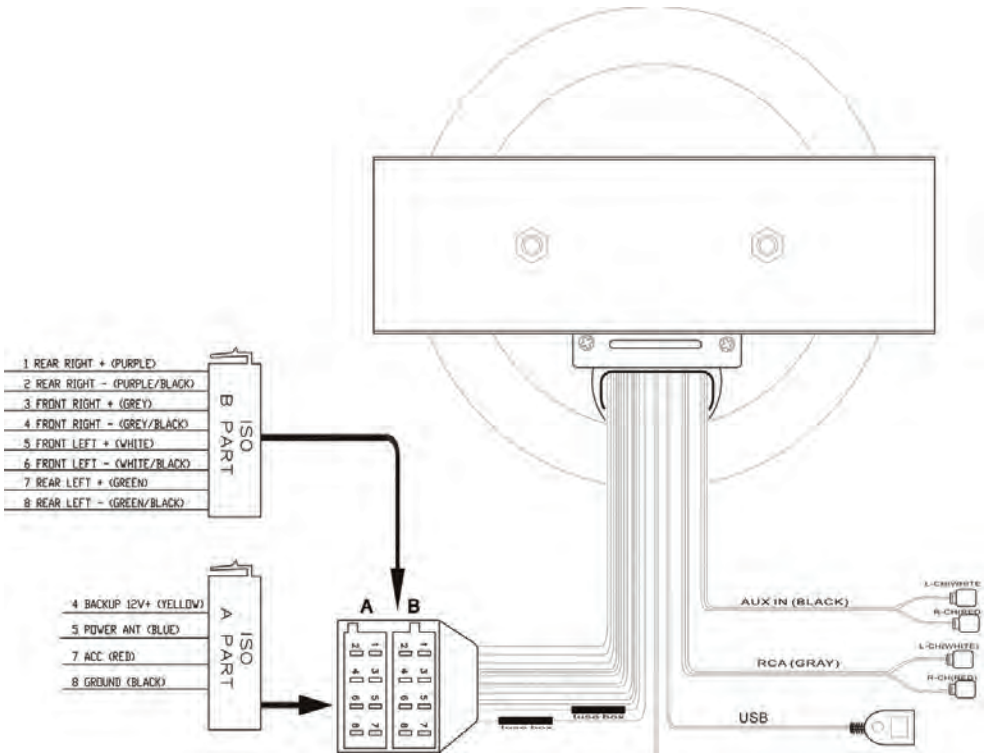
Mounting

Once a suitable location has been determined, drill the hole and secure the stereo using the metal mounting bracket. If the bracket needs to be shortened, remove the appropriate number of breakaway segments using a pair of pliers.



WIRING CONNECTION

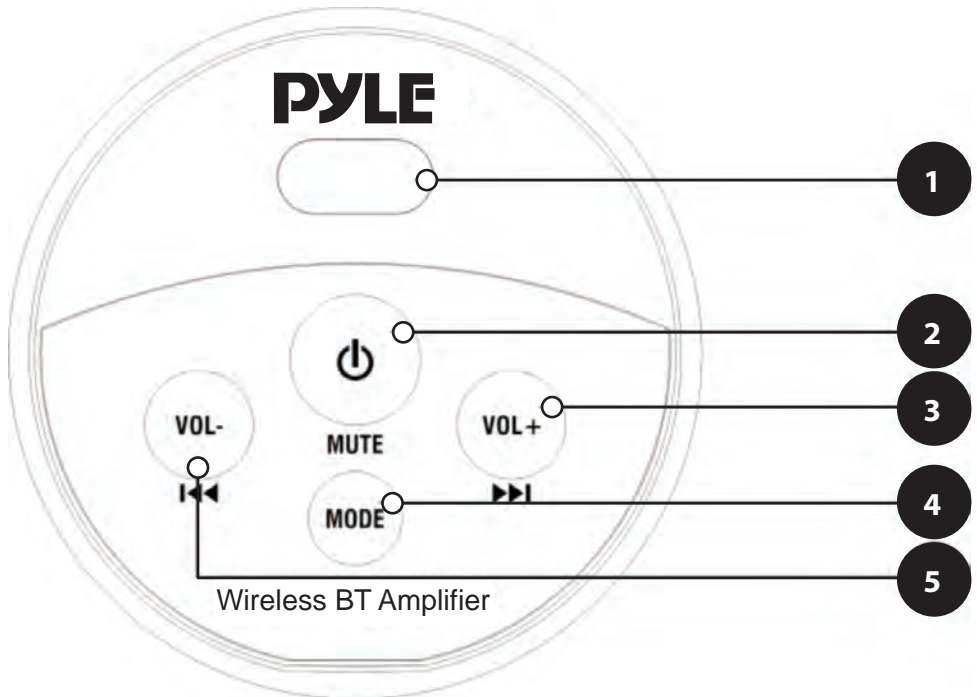
ISO CONNECTION



OPERATION

LOCATION OF KEYS

Once a suitable location has been determined, drill the hole and secure the stereo using the metal mounting bracket. If the bracket needs to be shortened, remove the appropriate number of breakaway segments using a pair of pliers.



1. IR Window
2. ⏻ Button/Mute Button
3. Vol+ / ▶▶ Button
4. Mode Button
5. Vol- / ◀◀ Button

OPERATION

TURN ON/OFF THE UNIT

Press button (2) to turn **ON** the unit. When the unit is on, press and hold button (2) for 2 seconds to turn the unit **OFF**.

MUTE

When the unit is on. Shortly press **MUTE** button (2) to mute the audio output. Press it again to recover output.

TURN UP/DOWN VOLUME

Press **Vol+ / ►►** or **Vol- / ◄◄** button to turn up/down volume. Press and hold it for turning it up/down volume continuously.

SELECTING FILES

Press and hold **MODE** button for 2 seconds. Then press or button **Vol+ / ►►** or **Vol- / ◄◄** to move to the next file or previous file. If both buttons have not been pressed for several seconds. It will return to **VOL** mode.

MODE

Shortly press **MODE** button on the panel to change the source. Press and hold it for 2 seconds. It change the **VOL+/-** button to **►► / ◄◄** function. If both buttons (**►► / ◄◄**) have not been pressed for several seconds. It will return to **VOL** mode.

AUXILIARY INPUT

The unit can be connected a portable audio player through the **AUX IN** interface.

SLIGHT FOG AFTER OPERATION

Normal in colder weather. Allow unit to run for 1-2 hours. This will burn off moisture.

USB PLAY OPERATION

On the back side of the unit, there is a **USB** interface. You can connect an USB driver through this interface . When you connect an USB driver through the interface, the unit will search the **MP3/WMA** files in the USB driver and start to play automatically. If in other mode, you can also press **MODE** button on the remote control to select USB mode. It supports the MP3/WMA file in the device.

SELECTING SONGS IN SINGLE STEP

Press **►►** button or **◄◄** button on the remote control to move to the following song or the previous song. Press and hold **►►** button or **◄◄** button for 2 seconds to fast forward or fast reverse. Song playing starts from when you release the button.

PAUSING PLAYING

Press 1 ►► button on the remote control to pause playing. Press it again to resume playing.

SELECTING SONGS BY BND BUTTON

In USB mode. Press **AMS** button on the remote control to active the file search mode. In this moment enter desired song number and press **SEL** button to confirm. It will play the song.

Note:

BAND: 7

►►: 8

►►: 9

BDISP: 0

SEL: Confirm

FOLDER+/- FUNCTION

When MP3/WMA playing. Press DIR+/- button on the remote control it will to the next folder or back to the previous folder.

+10/-10 FUNCTION

When MP3/WMA playing. Press and hold +10/-10 button for 2 seconds on the remote control it will skip to +10 /-10 songs to play.

CAUTION:

When there are important files in the USB Device, do not connect it to the main unit to play, because any wrong operation may cause files loss. Our company assumes no responsibility for this.

BLUETOOTH OPERATION

• PRE-PAIR FOR BLUETOOTH OPERATION

- I. When use Bluetooth, please make sure the mobile phone supports Bluetooth function.
- II. For the different kind of mobile phone, Bluetooth emissive power has some difference. To get the best conversation quality, it is commended that the distance between the mobile phone and the unit is within 3m. And please don't put any metal object or any obstacle between the path of the mobile phone and the unit.

• PAIRING

I. On the mobile phone, select the Bluetooth set up. (Please refer to the instruction manual of your mobile phone on how to operate Bluetooth.)

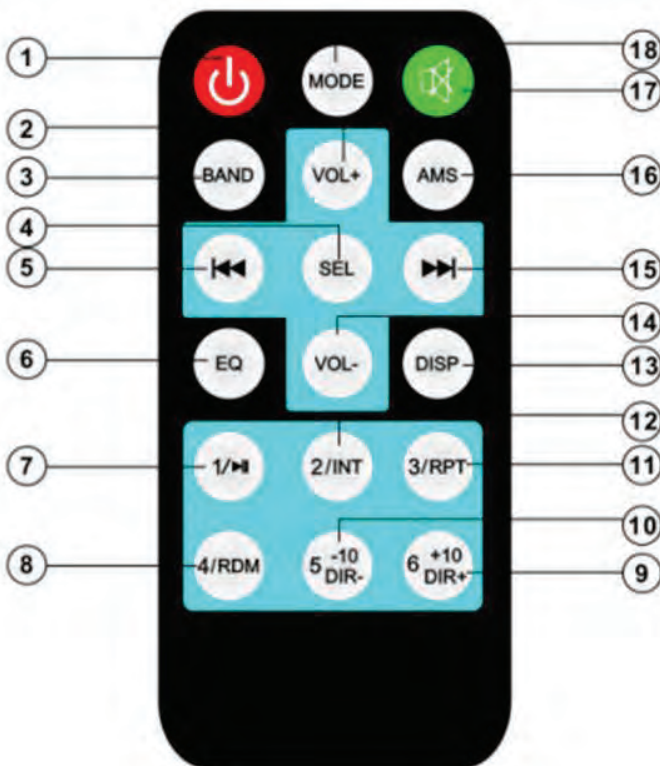
II. "PyleUSA" appear in the list on your mobile phone, please select "PyleUSA" input password "0000" if necessary if needed.

• Bluetooth Audio (A2DP function)




Press **MODE** key on the remote control till to the **BT** mode. Then turn **ON** the music player of the mobile phone and playing a song. The sound will come out from the speaker of the unit.

Press **▶||** key on the remote control to pause/play the song. Press **▶▶** button or **▶▶|** button on the remote control to select next/previous song.

REMOTE CONTROL HANDSET



FUNCTION KEY & CONTROL

1.  Power **ON/OFF** Button.
2. **VOL+** Volume up button.
3. **BAND** No function.
4. **SEL** In **MP3/WMA** searching mode press it for confirm function.
 In MP3/WMA mode: Press it shortly for skip previous file.
Press and hold it for fast reverse.
6. **EQ** Press it to select desired audio equalization.
7. **1/▶II** In MP3/WMA mode: Press to pause/resume playing.
8. **4/RDM** In CD/MP3/WMA mode: turn on/off random function.
9. **6/+10/DIR+:** In MP3/WMA mode: Press it to next folder.
Press and hold for 2 seconds for +10 function.
10. **5/-10/DIR-:** In MP3/WMA mode: Press it back to previous folder.
Press and hold for 2 seconds for -10 function.
11. **3/RPT** In CD/MP3/WMA mode: Press it turn on/off repeat function.
12. **2/INT** In CD/MP3/WMA mode: Press it turn on/off INTRO function.
13. **DISP** In CD/MP3/WMA mode: when searching file it is 0 number.
14. **VOL-** Volume down button.
15. **▶▶** In MP3/WMA mode: Press it shortly for skip next file.
Press and hold it for fast forward.
16. **AMS** In MP3/WMA mode: it is song searching function.
17.  Press to mute the sound. Press it again to recover the Sound.
18. **MODE** Press to change the source .

TROUBLESHOOTING

Before going through the checklist, check wiring connection. If any of the problems persist after checklist has been made. Consult your nearest service dealer.

Symptom	Cause	Solution
No power	The car ignition switch is not ON .	If the power supply is connected to the car accessory circuits, but the engine is not moving, switch the ignition key to " ACC ".
	The fuse is blown.	Replace the fuse.
No sound	Volume is in minimum	Adjust volume to a desired level.
	Wiring is not properly connected.	Check wiring connection

PLMRM4BTA

Marine Bluetooth Amplifier Receiver

Waterproof Rated Amp Audio Control Unit, MP3/USB/AUX

Features:

- Sound System Amp Receiver for Audio Control
- Built-in Bluetooth Receiver for Wireless Streaming
- Water Resistant Marine Grade Construction
- Universal Standard Size for Dashboard/Console Panel Installation
- Wired USB Flash Drive Reader
- MP3 Digital Audio File Playback
- Connect & Stream Audio from External Devices
- Aux RCA (L/R) Input Connectors
- Aux RCA (L/R) Audio Output Connectors
- Used for Boat, Automobile, Off-Road, Mobile and Marine Watercraft Vehicles

Bluetooth Connectivity:

- Built-in Bluetooth for Wireless Audio Ability
- Works with All of Your Favorite Devices (iPhone, Android, Smartphone, iPad, Tablet, etc.)
- Bluetooth Version: 2.1
- Bluetooth Wireless Range: 30'+ ft.
- Bluetooth Network Password: '0000' (4 zeroes)

Technical Specs:

- MAX Power Output: 4 x 50 Watt
- Marine Grade Rating: IP-X5
- Frequency Response: 20Hz-20kHz (+/-3dB)
- Impedance: 4 Ohm
- S/N Ratio: 55dB
- Stereo Separation: >30dB, @ 1kHz
- Tone Control: Bass/Treble +/-10dB
- Maximum USB Flash Support: 32GB
- Digital Audio File Support: MP3/WMA
- Power: DC 12V
- Current Drain/Power Consumption: 10 Amp (Max.)
- Total Front Face Diameter: 4.0" -inches
- Cutout Diameter: 3.1" -inches
- Chassis Mounting Depth: 2.9" -inches

What's in the Box:

- Bluetooth Amplifier Receiver
- Power & Wiring Harnesses
- Remote Control



PYLE

PyleUSA.com



VISIT US ONLINE:

Have a question?

Need service or repair?

Want to leave a comment?

PyleUSA.com/ContactUs

PYLE