

PYLE
PyleUSA.com



PLUTV44BTR

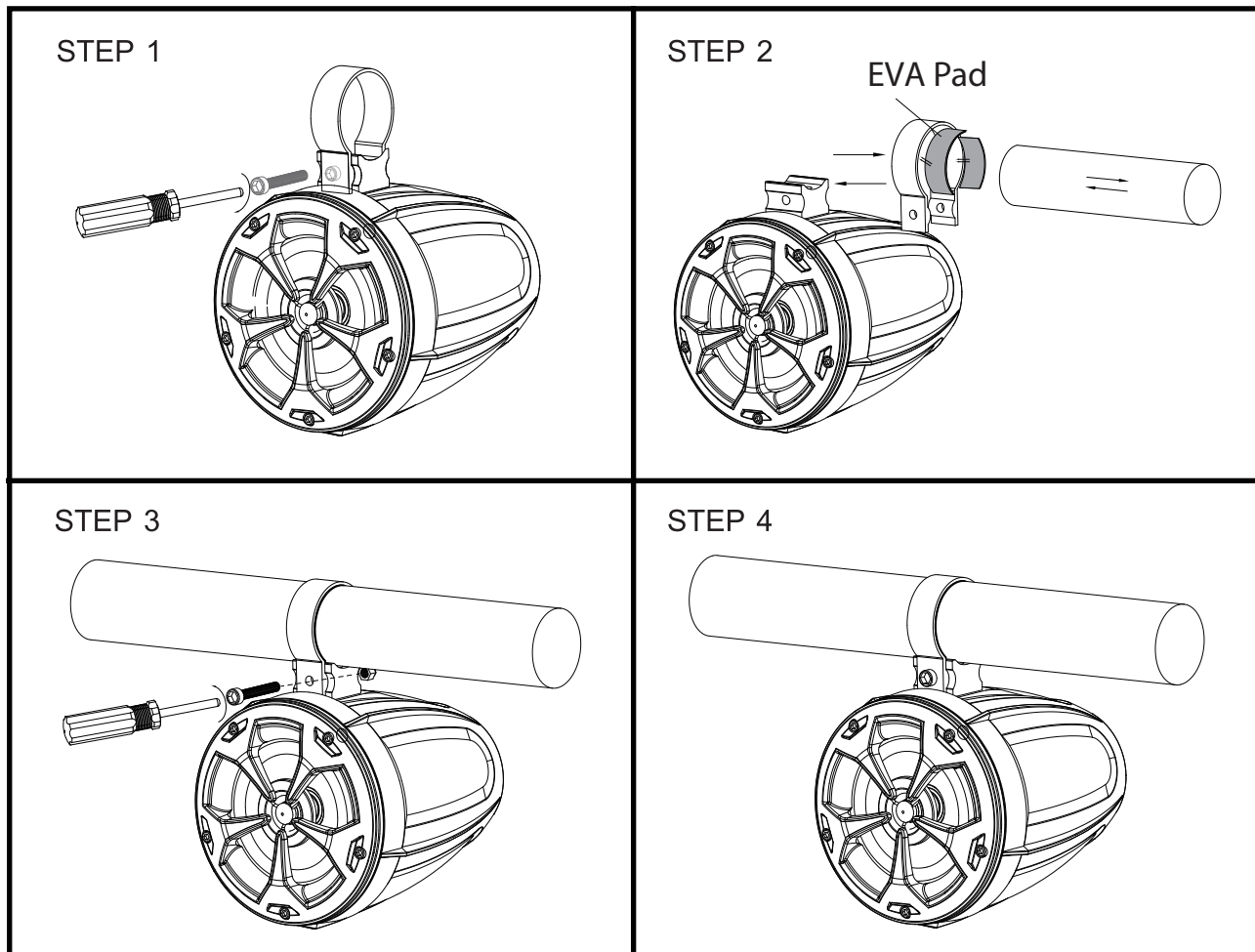
4" Waterproof Rated Off-Road Speakers

800 Watt Compact PowerSport Vehicle Speaker System for ATV,
UTV, 4x4, Jeep with RGB Lights & Remote Control (Pair)

USER MANUAL

PLUTV44BTR Installation

Speaker Mounting suggestion as below:



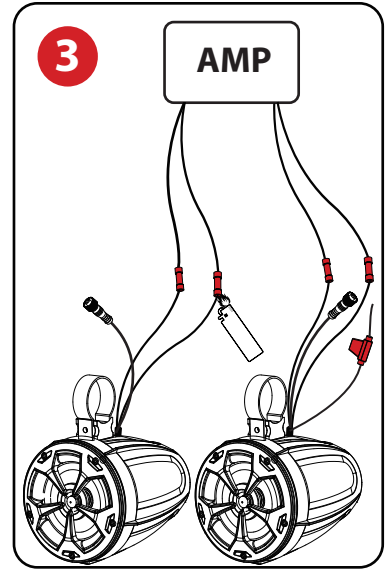
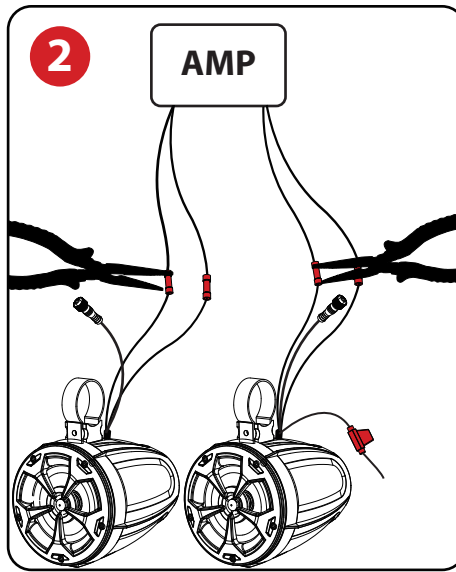
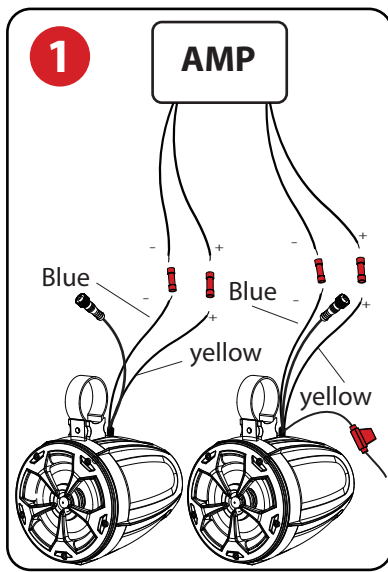
Step 1: Unbolting the mounting bracket

Step 2: Slide in the buckle with rubber pad attached to the bracket stand of the speaker

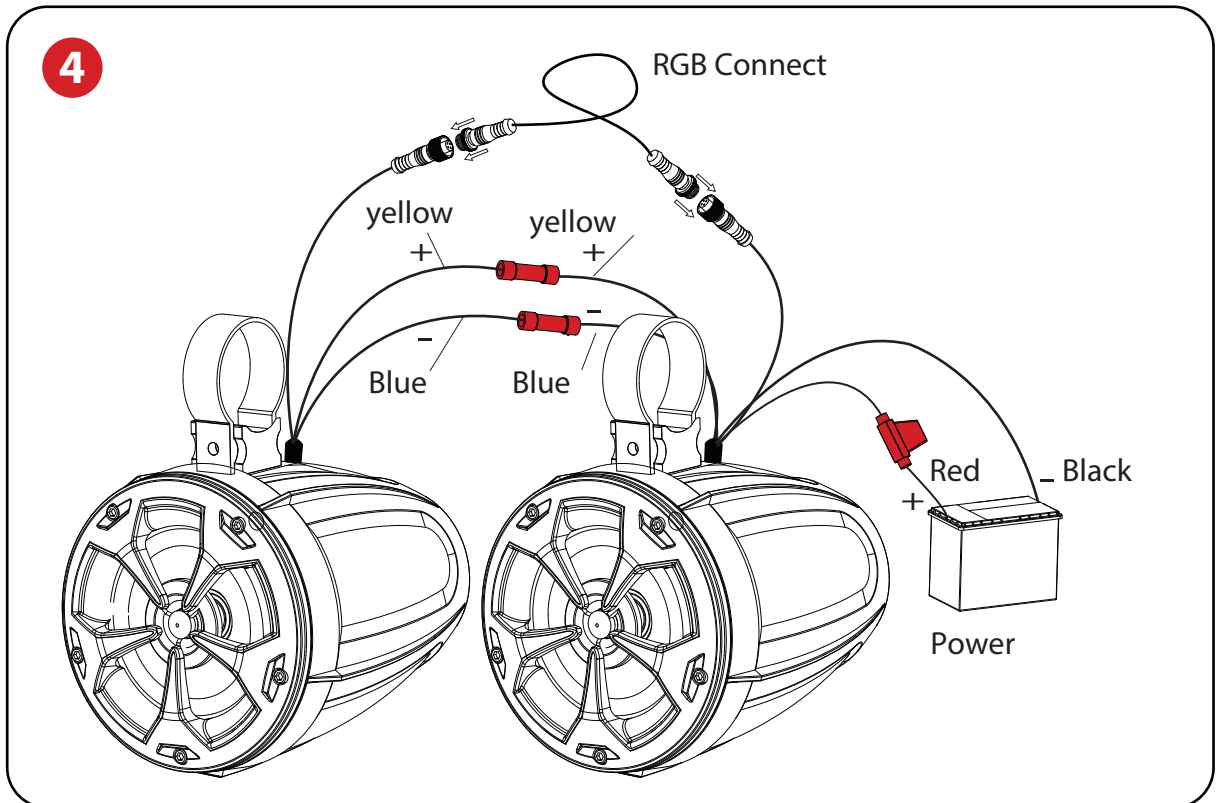
Attach the set to handle bar of vehicle / ship

Step 3/4: Attach screw to lock the buckle

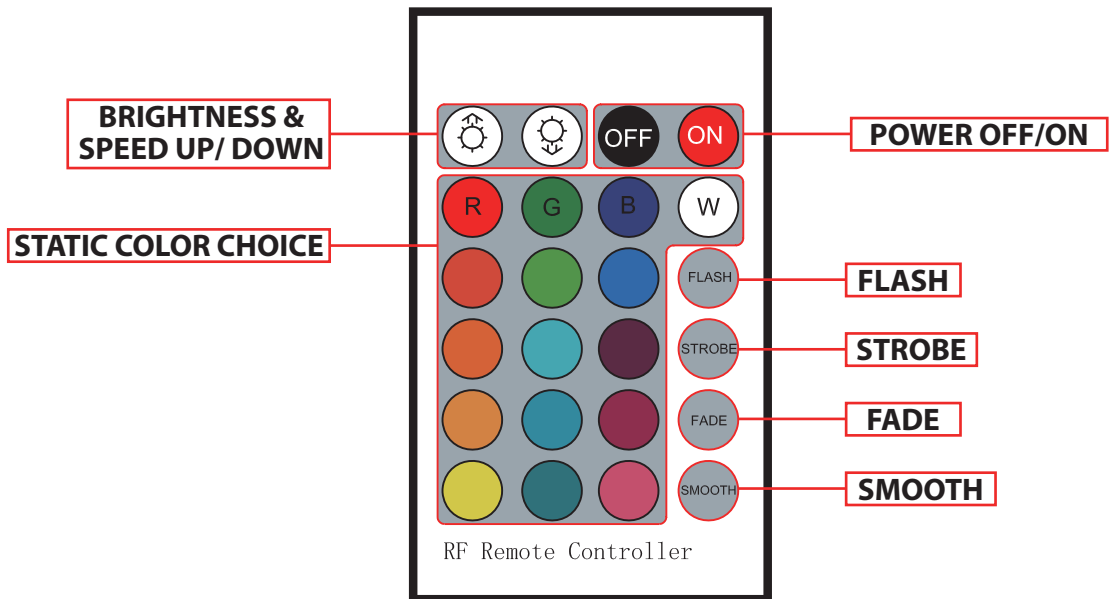
Step 5: Using accessories of Butt Connector to Connect Speaker wires (See Illustration 1,2,3)



Step 6: Connected two speakers by RGB connect wire, see the drawing in below
(See Illustration 4)



Remote Control Functions



- 16 static colors for choice with 8 kind of brightness which can adjust up and down.
- 3 colors flash, 4 colors strobe, 7 colors fade, 7 colors smooth, all modes can adjust the brightness and speed.
- In static color mode, the brightness can adjust up and down.

Features:

- Pro Audio PowerSport Speakers with RGB Lights
- Compact & High-Powered Output
- Marine Grade Waterproof Rated Construction
- Weatherproof & Water-Resistant Housing
- Sound System: (2) x 4.0" Woofers + (2) x 0.5" Tweeters
- 2-Way Full Range Stereo Sound Reproduction
- Impressive Bass Response
- Integrated Speaker Power & Wiring Harness
- Sleek Design, Machine Molded Speaker Cabinet Housing
- Rugged, Universal Mount Bracket Design for Roll-Bar / Roll-Cage
- Used for Off-Road Outdoor Vehicles: ATV, UTV, 4x4, Jeeps, Marine Watercraft

What's in the Box:

- (2) 4" -inch Off-Road Speakers
- (2) Speaker Connection Wires, 6.6' ft.
- (4) Wire Butt Connectors, 16-22 AWG
- (2) 5.9" x 0.7" x 0.2" -inches EVA Pads
- (2) 6.5" x 0.7" x 0.08" -inches EVA Pads
- RGB Connection Wire, 6.6' ft.
- Remote Control
- Warranty card
- Owner's Manual

Technical Specs:

- Power Output: 800 Watt MAX
- Marine Grade Waterproof Rating: IP-X5
- Speaker Size: 4" -inch (Each)
- Speaker Style: Passive Speakers
- Speaker Type: Polypropylene Cone, Butyl Rubber Surround (x2)
- Tweeter Type: Neodymium Dome (x2)
- Frequency Response: 85Hz-20kHz
- Impedance: 4 Ohm
- Magnet Type: 20 oz. Circuit
- Mid-Woofer Voice Coil Type: 1.0", Aluminum
- Sensitivity: 90 dB +/- 2 dB @ 1M/1W
- Universal Mounting Brackets Roll-Bar / Roll-Cage Diameter: 1.25" ~ 2.0" -inches
- Remote Control Battery Operated, Requires (1) x CR2025 Batteries (Included)
- Battery Type: 3.2V Lithium-ion 150mAh
- Speaker Dimensions: 5.6" x 8.4" x 7.3" -inches, with Bracket (Each)



WARNING:

This products can expose you to a chemical or group of checmicals, which may include **"Di (2-ethylhexyl) phthalate (DEHP)"** which is known in the state of California to cause cancer, birth defects, or other reproductive harm. For more info, go to <https://www.p65warnings.ca.gov/>.

PYLE

PyleUSA.com



VISIT US ONLINE:

Have a question?

Need service or repair?

Want to leave a comment?

PyleUSA.com/ContactUs

PYLE

Questions? Issues?

We are here to help!

Phone: (1) 718-535-1800

Email: support@pyleusa.com