

PYLE
PyleUSA.com



PLUTV45BTR

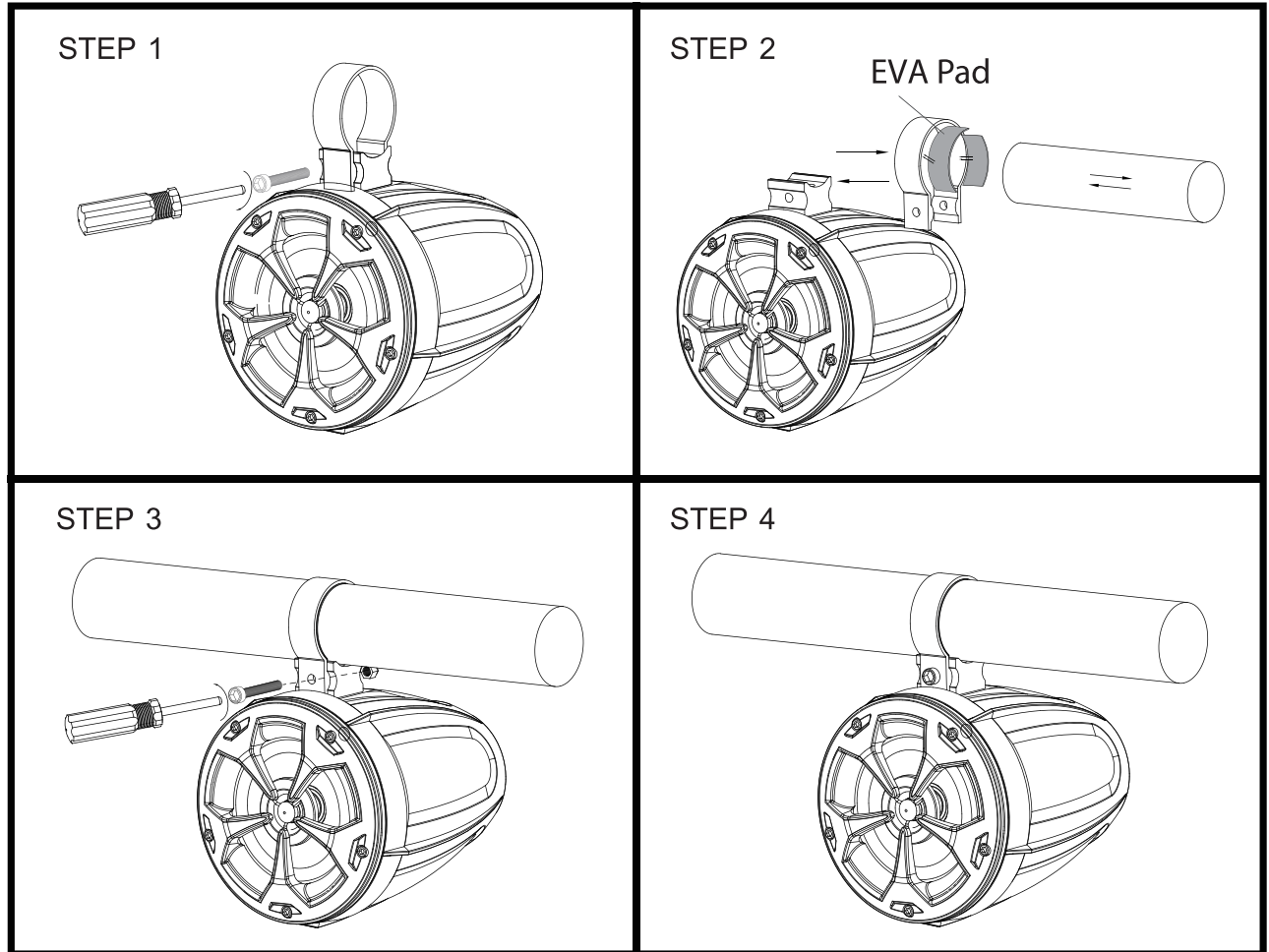
4" Waterproof Rated Off-Road Wireless BT Speakers

800 Watt Amplified Vehicle Speaker System for ATV, UTV,
4x4, Jeep with RGB Lights & Remote Control

USER MANUAL

PLUTV45BTR Installation

1. To avoid potential shorts in the electrical system, be sure to disconnect the (-) battery cable before installation. Use this unit with a 12-Volt battery and negative grounding only. Failure to do so may result in a fire or malfunction.
2. **Speaker Mounting suggestion as below:**



Step 1: Unbolting the mounting bracket

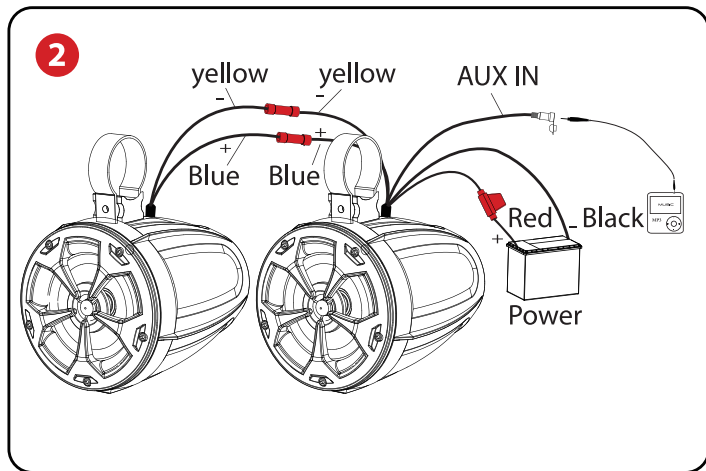
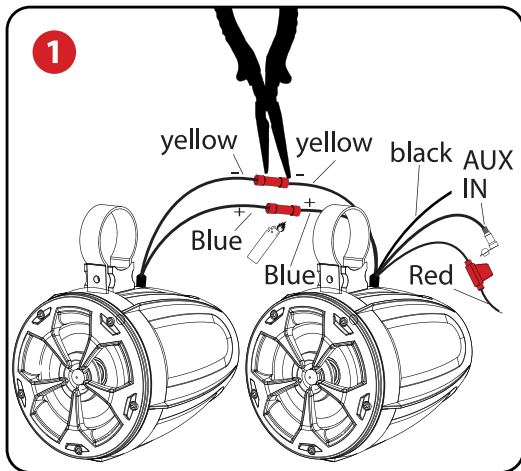
Step 2: Slide in the buckle with rubber pad attached to the bracket stand of the speaker

Attach the set to handle bar of vehicle / ship

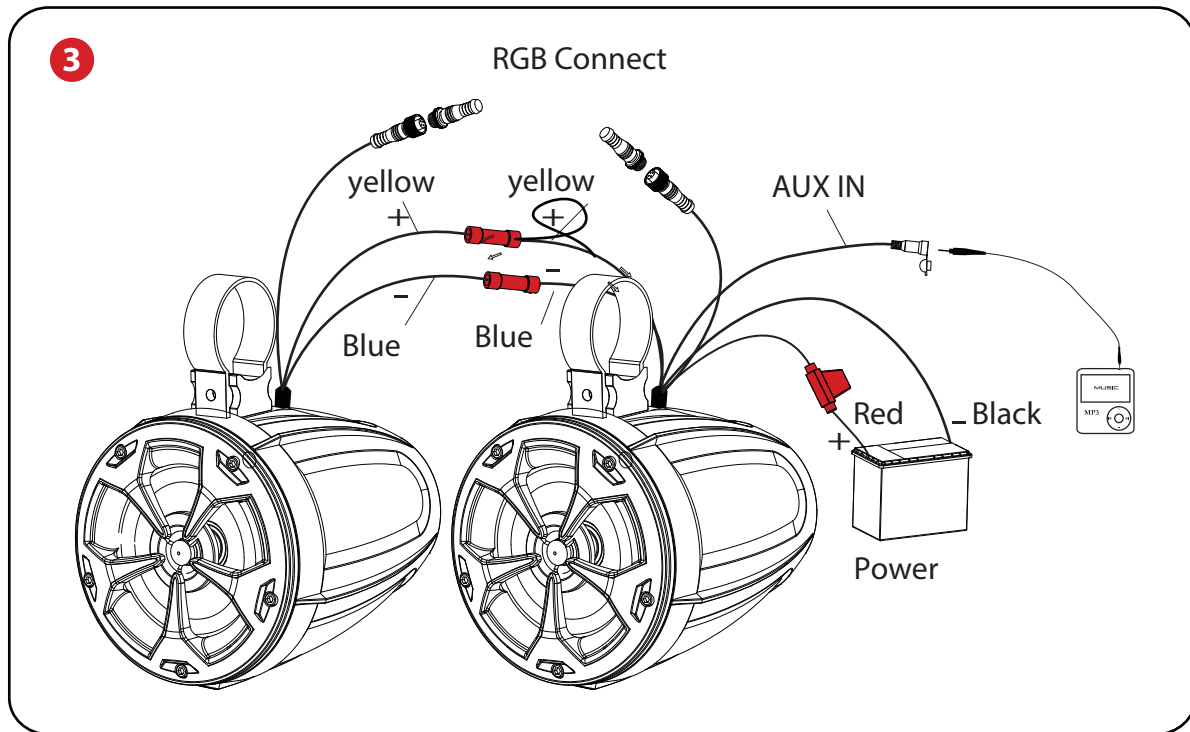
Step 3/4: Attach screw to lock the buckle

Step 5: Using accessories of Butt Connector to Connect Speaker wires (See Illustration 1)

Step 6 : Using accessories of Butt Connector to Connect Power Cable (See Illustrations 2)

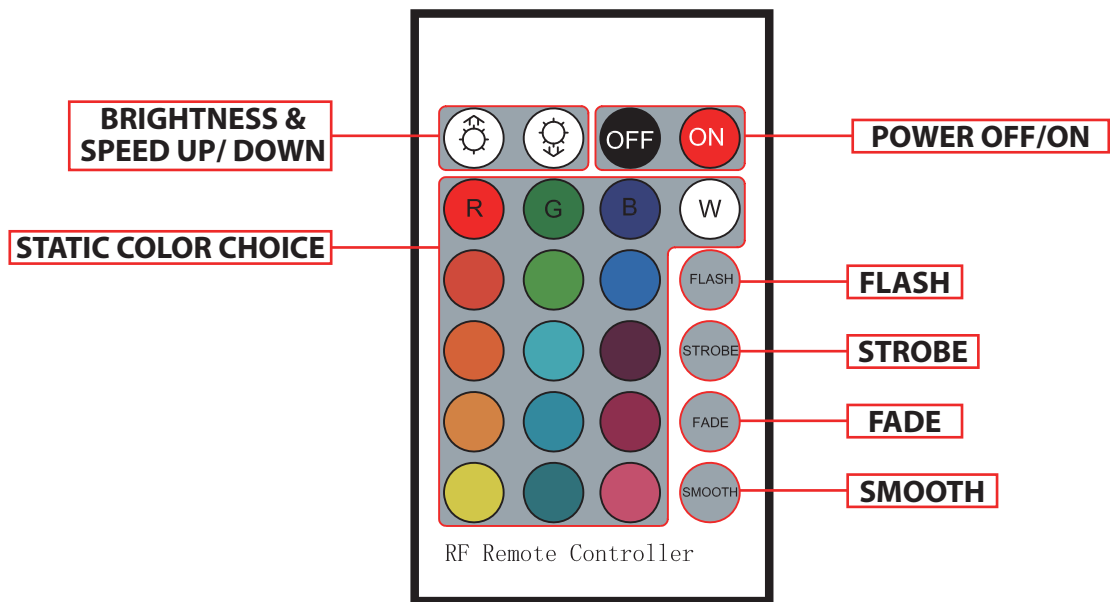


Step 7: Connected two speakers by RGB connect wire, see the drawing in below
(See Illustration 3)



Remote Control Functions

- 16 static colors for choice with 8 kind of brightness which can adjust up and down.
- 3 colors flash, 4 colors strobe, 7 colors fade, 7 colors smooth, all modes can adjust the brightness and speed.
- In static color mode, the brightness can adjust up and down.



Features:

- Pro Audio PowerSport Speakers with RGB Lights
- Amplified (Active + Passive) Speaker System
- Wireless BT Music Streaming Ability
- Bridged Sound System: (2) x 4.0" Woofers + (2) x 0.5" Tweeters
- Marine Grade Waterproof Rated Construction
- Weatherproof & Water-Resistant Housing
- 2-Way Full Range Stereo Sound Reproduction
- Built-in Digital Sound Processing Amplifier
- Integrated Speaker Power & Wiring Harness
- Compact Size & High-Powered Output
- Impressive Bass Response
- Aux (3.5mm) Input Jack
- Connect & Stream Audio from External Devices
- Sleek Design, Machine Molded Speaker Cabinet Housing
- Rugged, Universal Mount Bracket Design for Roll-Bar / Roll-Cage
- Used for Off-Road Outdoor Vehicles: ATV, UTV, 4x4, Jeeps, Marine Watercraft

Wireless BT Connectivity:

- Simple & Hassle-Free Pairing
- Instant Wireless Audio Streaming Ability
- Works with All of Today's Latest Devices (Smartphones, Tablets, Laptops, etc.)
- Wireless BT Version: V4.2
- Wireless BT Network Name: 'PYLEUSA'
- Wireless Range: 30+ ft.
- *Wireless BT Receiver Module Built-Into Amplifier of Main/Active Speaker

What's in the Box:

- (1) 4" Amplified Main Speaker
- (1) 4" Passive Support Speaker
- Speaker Connection Wires, 6.6' ft.
- Wire Butt Connectors, 16-22 AWG
- (2) 5.9" x 0.7" x 0.2" -inches EVA Pads
- (2) 6.5" x 0.7" x 0.08" -inches EVA Pads
- RGB Connection Wire, 6.6' ft.
- Remote Control
- Warranty card
- Owner's Manual

Technical Specs:

- Speaker Power: 800 Watt MAX
- Amp Power: 2 x 250 Watt MAX @ 4 Ohms (2 x 125 Watt RMS)
- Amp Type: 2-Channel, Class D
- Marine Grade Waterproof Rating: IP-X5
- Speaker Type: Polypropylene Cone, Butyl Rubber Surround (x2)
- Tweeter Type: Neodymium Dome (x2)
- Frequency Response: 85Hz-20kHz
- Impedance: 4 Ohm
- Magnet Type: 20 oz. Circuit
- Mid-Woofer Voice Coil Type: 1.0", Aluminum
- Sensitivity: 90 dB +/- 2 dB @ 1M/1W
- Anti-Thump Turn-On
- Soft Turn On/Off
- T.H.D: <0.05%
- S/N Ratio: >95dB
- Channel Separation: >65dB
- Amp Freq. Response: 10Hz- 30 kHz
- Fuse: 1 x 10A
- Power Supply: DC 12V
- Universal Mounting Brackets Roll-Bar / Roll-Cage Diameter: 1.25" ~ 2.0" -inches
- Remote Control Battery Operated Requires (1) x CR2025 Batteries (Included)
- Battery Type: 3.2V Lithium-ion 150mAh
- Speaker Dimensions: 5.6" x 8.4" x 7.3" -inches, with Bracket (Each)



WARNING:

This products can expose you to a chemical or group of checmicals, which may include "**Di (2-ethylhexyl) phthalate (DEHP)**" which is known in the state of California to cause cancer, birth defects, or other reproductive harm. For more info, go to <https://www.p65warnings.ca.gov/>.

PYLE

PyleUSA.com



VISIT US ONLINE:

Have a question?

Need service or repair?

Want to leave a comment?

PyleUSA.com/ContactUs

PYLE

Questions? Issues?

We are here to help!

Phone: (1) 718-535-1800

Email: support@pyleusa.com