

PYLE[®]

CYCLE SERIES



PLUTVA102

**2 Channel Waterproof 4" UTV/ATV/
Snowmobile Marine Amplified
Speaker System**

PLUTVA104BT

**4 Channel Waterproof 4" UTV/ATV/
Snowmobile/Marine Amplified
Speaker System with Bluetooth
Audio Interface**

OWNER'S MANUAL

www.Pyleaudio.com

Thank you for making a **PYLE**® your choice marine for audio entertainment!

It's compact, waterproof design allows for flexible mounting possibilities, and makes it simple to expand the audio system capabilities for vehicle.

PLUTVA102
2 Channel Waterproof 4" UTV/ATV/Snowmobile/Marine
Amplified Speaker System

One Pair 4" 2-Way Marine Speaker:

- 4" High Quality Poly Injection Cone
- Butyl Rubber Surround
- Shiny Black Plastic Enclosure
- 1" High Temperature KEISV Voice Coil
- 1" PEI Neodymium Dome Tweeter
- 100 Watts RMS / 200 Watts Peak
- Frequency Response: 100-20KHz
- Impedance: 4 Ohms
- Speaker Enclosure Dimensions:
5.4"(L) x 7.2"(W) x 6.9"(H)

2 Channel Waterproof Marine Power Amplifier

- 2 x 100 Watts RMS at 4 Ohms
- 2 x 200 Watts Max at 4 Ohms
- Anti-Thump Turn-On
- Soft Turn On/Off
- RCA Line Input
- Volume Gain Remote Control
- T.H.D: <0.05%
- S/N Ratio: >95dB
- Channel Separation: >65dB
- Frequency Response: 10Hz- 30kHz
- Fuse : 1 x 10A
- Dimensions: 5.12"(L) x 4.29"(W) x 1.89"(H)

PLUTVA104BT

4 Channel Waterproof 4" UTV/ATV/Snowmobile/Marine Amplified Speaker System with Bluetooth Audio Interface

Two Pair 4" 2-Way Marine Speaker:

- 4" High Quality Poly Injection Cone
- Butyl Rubber Surround
- Shiny Black Plastic Enclosure
- 1" High Temperature KEISV Voice Coil
- 1" PEI Neodymium Dome Tweeter
- 100 Watts RMS / 200 Watts Peak
- Frequency Response: 100-20KHz
- Impedance: 4 Ohms
- Speaker Enclosure Dimensions:
5.4"(L) x 7.2"(W) x 6.9"(H)

4 Channel Waterproof Marine Power Amplifier

- 4 x 100 Watts RMS at 4 Ohms
- 4 x 200 Watts Max at 4 Ohms
- Anti-Thump Turn-On
- Soft Turn On/Off
- RCA Line Input
- Volume Gain Remote Control
- T.H.D: <0.05%
- S/N Ratio: >95dB
- Channel Separation: >65dB
- Frequency Response: 10Hz- 30kHz
- Fuse : 1 x 10A
- Bluetooth 3.0 Technology
- Bluetooth Auto Connected While Power on
- Bluetooth Auto Disconnected While Aux-in (3.5mm Connector)
- Easy and Quick Installed Handle-bar Mount Bracket is Included
- Bluetooth Console Dimension: 3.15"(L) x 2.09"(W) x 0.83"(H)
- Amplifier Dimensions: 5.9"(L) x 4.29"(W) x 1.89"(H)

What is included?

When first unpacking your new amplified waterproof speaker system, Please check first that the package contains all of the items below. If something is missing, contact the store where you purchased the product.

PLUTVA102

- One Pair 4" 2-Way Marine Speaker
- One Piece 2 Channel Waterproof Marine Power Amplifier
- One Piece iPod /MP3 Waterproof 3.5mm Stereo to RCA Adaptor
- One Piece Remote Control for Volume Gain

PLUTVA104BT

- Two Pair 4" 2-Way Marine Speakers
- One Piece 4 Channel Waterproof Marine Power Amplifier
- One Piece Bluetooth controller

Installation precautions

Before you drill or cut any holes, investigate your vessel's layout very carefully. Take special care when you work near the gas tank, fuel lines, hydraulic lines and electrical wiring.

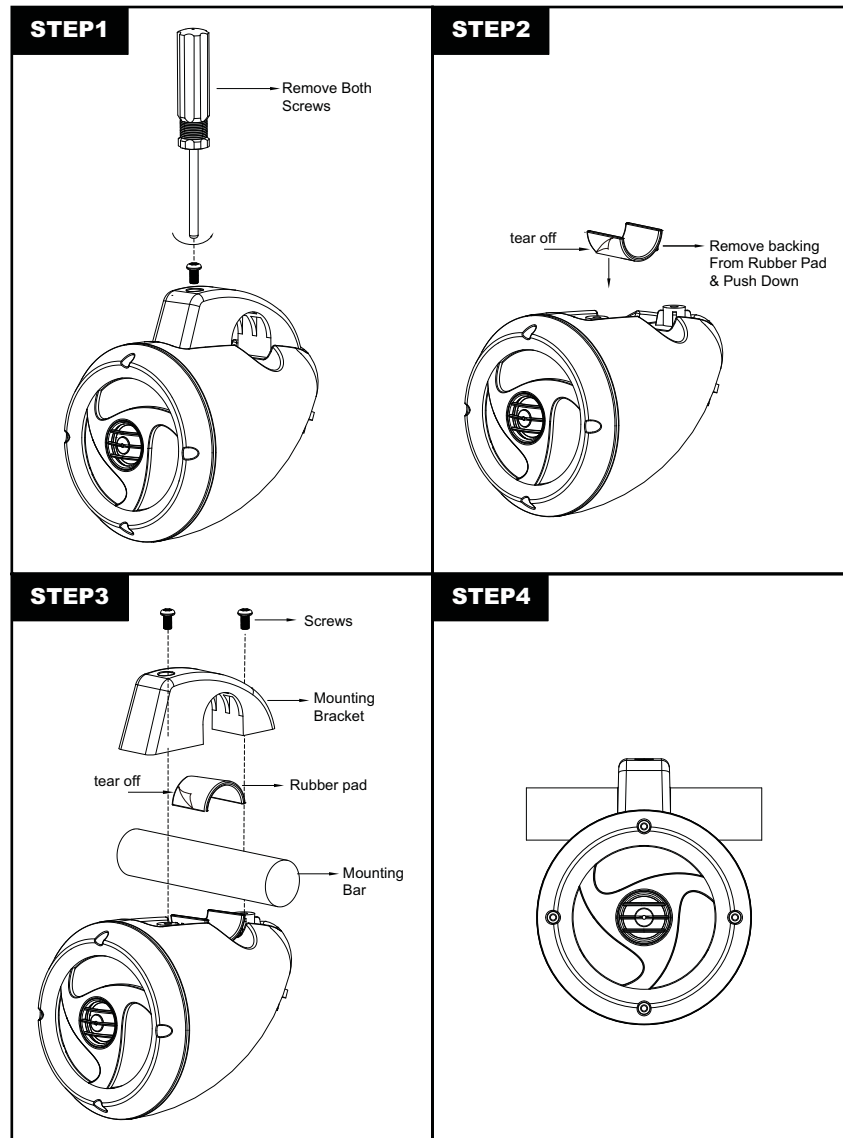
Never operate the amplifier when it is unmounted. Attach all audio system components securely within the amplifier to prevent damage, especially in an accident.

Do not mount this amplifier so that wire connections are unprotected. in a pinched condition, in contact with any metal surfaces in your marine vessel, or likely to be damaged by nearby objects.

Before making or breaking power connections in your system, disconnect the marine vessel battery. Confirm that your headunit or other equipment is turned off while connecting the input jacks and speaker terminals.

If you need to replace the power fuse, replace it only with a fuse identical to that supplied with the amplifier, Using a fuse of a different type or rating may result in damage to your audio system or your amplifier which is not covered by the manufacturer's warranty.

INSTALLATION INSTRUCTIONS:



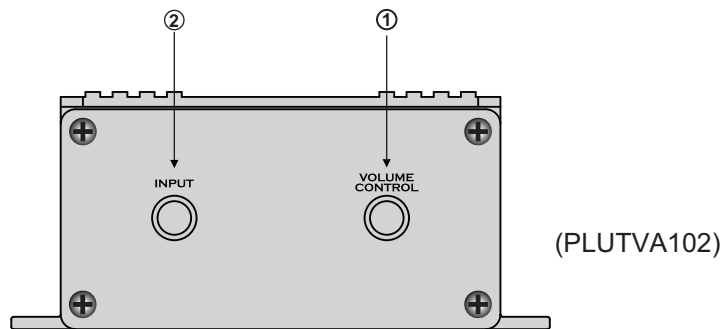
Don't misuse the level control!

Do not mistake the input level control for a volume control! It is designed ONLY to match the output level of your audio source to the input level of your amplifier.

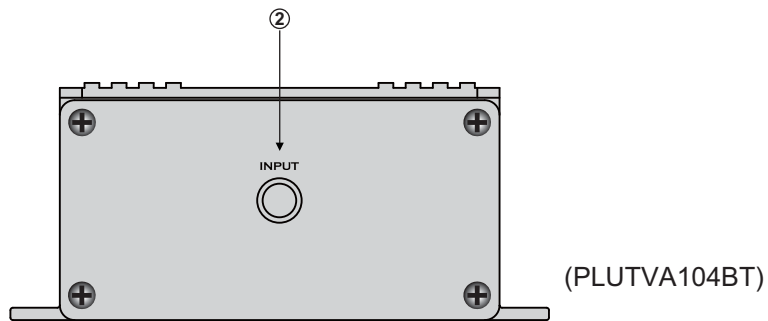
Do not adjust this input level of maximum unless your input level requires it.

Ignoring these instructions will result in an input overload to the amplifier, and excessive audio distortion. It can also cause the protection circuit to engage.

Controls, Input and Output Cables:



(PLUTVA102)



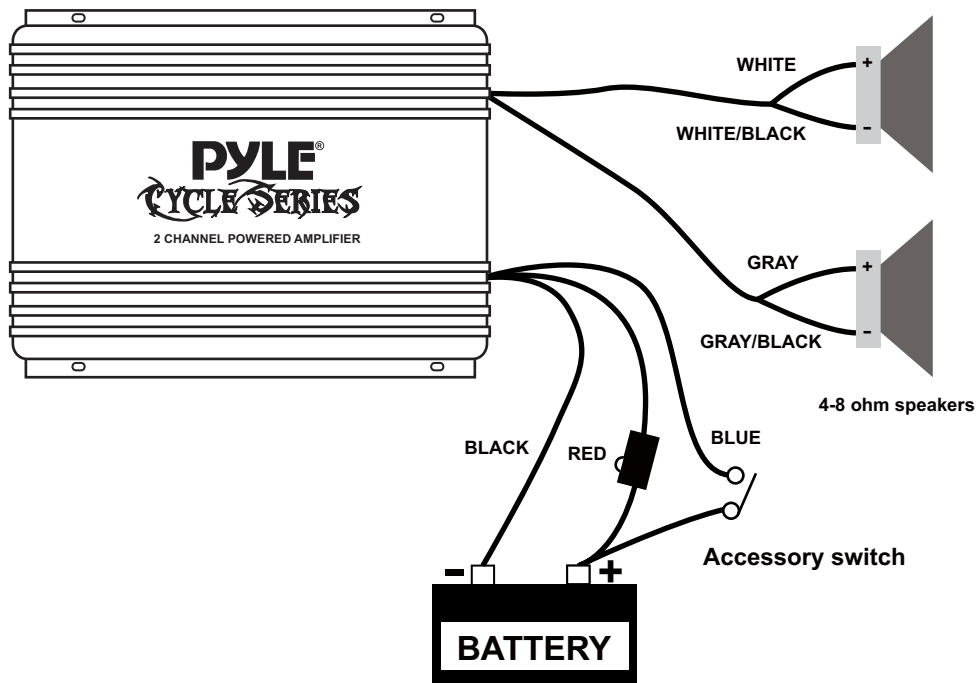
(PLUTVA104BT)

The switches and gain settings are located behind a watertight plug, which also lights up when the amplifier is on. Be sure to replace the plug when finished with adjustments

- ① VOLUME CONTROL Plug for the waterproof remote volume control. When installed, this control will turn off the Amp when turned all the way down.
- ② INPUT Stereo RCA audio input for connecting other audio devices

Power and Speaker Wiring

(PLUTVA102)



wire color

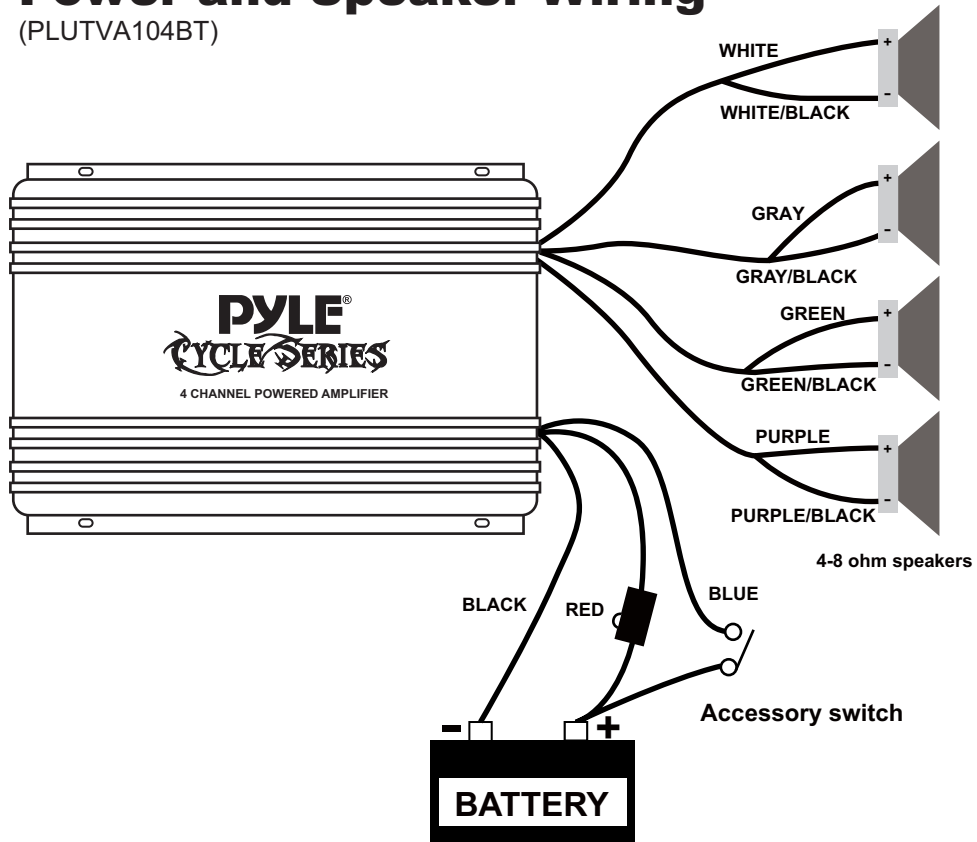
Red
Black
Blue
White
White/Black
Gray
Gray/Black

Description

Battery (+), 12dc
Battery (-), Ground
Remote Turn On, 12vdc = ON
CH1 (+)
CH1 (-)
CH2 (+)
CH2 (-)

Power and Speaker Wiring

(PLUTVA104BT)

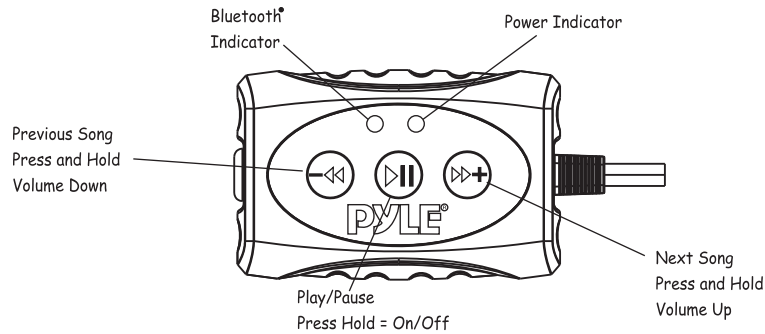


wire color

Red
 Black
 Blue
 White
 White/Black
 Gray
 Gray/Black
 Green
 Green/Black
 Purple
 Purple/Black

Description

Battery (+), 12dc
 Battery (-), Ground
 Remote Turn On, 12vdc = ON
 CH1 (+)
 CH1 (-)
 CH2 (+)
 CH2 (-)
 CH3 (+)
 CH3 (-)
 CH4 (+)
 CH4 (-)



Bluetooth Pairing and Connection:

1. Connect Bluetooth controller box to your device
2. Press and Hold >|| for three seconds until power indicator lights (red)
3. The system will automatically go into pairing mode
The power indicator will turn red for about 7 seconds and then alternating red and blue (Bluetooth blue Power red)
Please be sure that Bluetooth is turned on your device Select Pyle Audio on your device to connect Bluetooth controller (if the Bluetooth controller is connected the light will turn blue and not flash)
4. When the device is out of Bluetooth range, Bluetooth will be disconnected automatically and automatically reconnect when detected in range again. (If not please just repeat steps 1 and 2)
5. When Bluetooth is disconnected or the 3.5mm AUX Input is plugged in, the power indicator will glow red.

Playing Music:

1. Press >|| to start or pause the music
2. Press >>+ shortly for next track, Press and hold for Volume up
3. Press -<< shortly for previous track, Press and hold for Volume down

PYLE[®]
CYCLE SERIES

www.pyleaudio.com