

## Phono Turntable Preamp

### IMPORTANT SAFETY INSTRUCTIONS

- 1. Read Instructions:** All the safety and operating instructions should be read before the appliance is operated.
- 2. Retain Instructions:** The safety and operating instructions should be retained for future reference.
- 3. Heed Warnings:** All warnings on the appliance and in the operating instructions should be adhered to.
- 4. Follow Instructions:** All operating and use instructions should be followed.
- 5. Water and Moisture:** The appliance should not be used near water—for example, near a bathtub, washbowl, kitchen sink, laundry tub, swimming pool, or a wet basement.
- 6. Ventilation:** The appliance should be situated so that its location or position does not interfere with its proper ventilation. For example, the appliance should not be situated on a bed, sofa, rug, or similar surface that may block the ventilation openings: or placed in a built-in installation, such as a bookcase or cabinet that may impede the flow of air through the ventilation openings.
- 7. Heat:** The appliance should be situated away from heat sources such as radiators, heat registers, stoves, or other appliances (including amplifiers) that produce heat.
- 8. Power Sources:** The appliance should be connected to a power supply only of the type described in the operating instructions or as marked on the appliance.
- 9. Grounding or Polarization:** Precaution should be taken to insure that the grounding or polarization means of an appliance is not defeated.
- 10. Power-Cord Protection:** Power supply cords should be routed so that they are not likely to be walked on or pinched by items placed upon or against them, paying particular attention to cords at plugs, convenience receptacles, and the point at which they exit from the appliance.
- 11. Cleaning:** The appliance should be cleaned only as recommended by the manufacturer.
- 12. Power Lines:** An outside antenna system should not be located in the vicinity of overhead power lines or other electric light or power circuits, or where it can fall into such power lines or circuits. When installing an outside antenna system, extreme care should be taken to keep from touching such power lines or circuits as contact with them might be fatal.
- 13. Non-use Periods:**

The power cord of the appliance should be unplugged from the outlet when the appliance is to be left unused for a long period of time.
- 14. Object and Liquid Entry:**

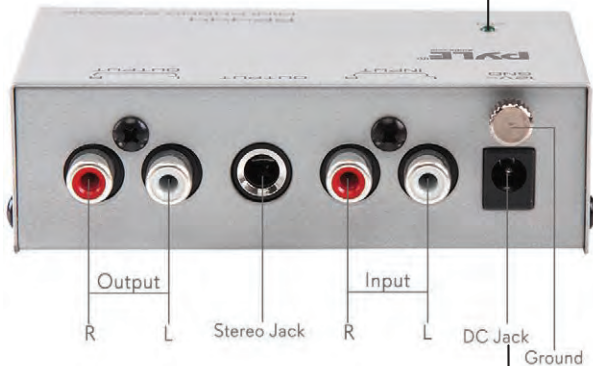
Care should be taken so that objects do not fall and liquids are not spilled into the enclosure through openings.
- 15. Carts and Stands:** If the appliance is used with a cart or stand, the cart or stand should be a type recommended by the manufacturer. An appliance and cart combination should be moved with care. Quick stops, excessive force, and uneven surfaces cause the appliance and cart combination to overturn.
- 16. Mounting:** The appliance should be mounted only as recommended by the manufacturer.
- 17. Damage Requiring Service:** The appliance should be serviced by qualified service personnel when:
  - A.** The power-supply cord or plug has been damaged.
  - B.** Objects have fallen into, or liquid has been spilled into the appliance enclosure.
  - C.** The appliance has been exposed to rain.
  - D.** The appliance has been dropped, or the enclosure damaged.
  - E.** The appliance does not appear to operate normally or exhibits a marked change in performance.
- 18. Servicing:** The user should not attempt to service the appliance beyond that described in the user's operating instructions. All other servicing should be referred to qualified personnel.
- 19. Overloading:** Do not overload wall outlets and extension cords as this can result in a risk of fire or electric shock.
- 20. Replacement Parts:** When replacement parts are required, be sure the service technician has used replacement parts specified by the manufacturer or have the same characteristics as the original part. Unauthorized substitutions may result in fire, electric shock or other hazards.
- 21. Safety Check:** Upon completion of any service or repairs to this appliance, ask the service technician to perform safety checks to determine that the appliance is in proper operating condition.



## FEATURES AND CONTROLS

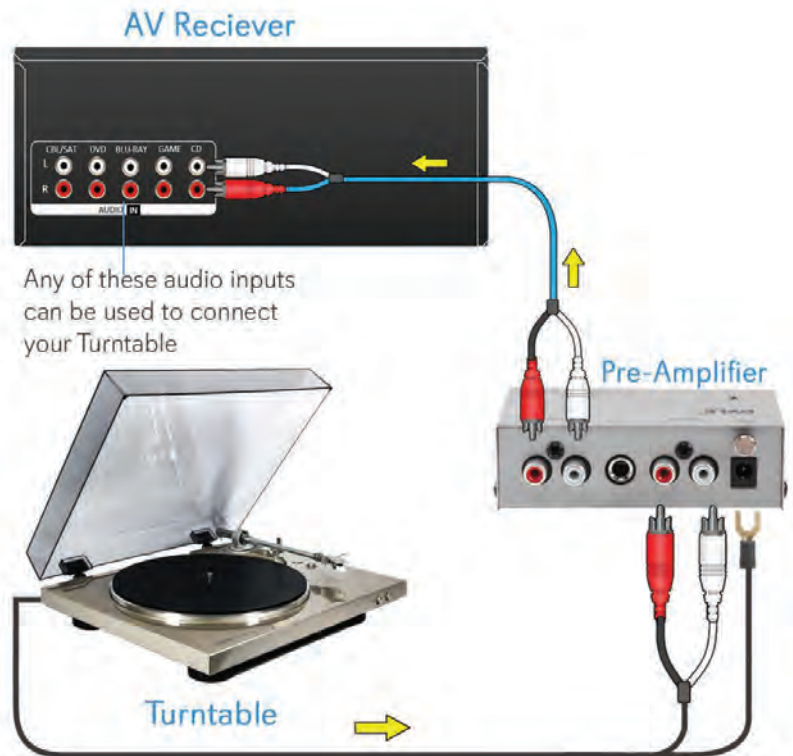
### Power On LED Indicator

The indicator lights when the power supply is connected to switch on.



DC 12V/150mA Power Supply  
To connect the power supply with DC 12V/150mA

## CONNECTION DIAGRAM



Any of these audio inputs can be used to connect your Turntable

## Pyle Phono Turntable Preamp MiniElectronic Audio Stereo Phonograph Preamplifier with RCA Input, RCA Output & Low Noise Operation Powered by 12 Volt DC Adapter.

This electronic preamplifier stands up to the test and will provide you with serious sound performance. The PP444 is perfect for bringing your studio equipment's phono-level output to a more suitable line-level output. It'll take your audio signal, amplify its strength and prepare it for further processing by your receiver or amplifier. Preamps technically provide voltage gain to your desired equipment and are key to assisting the signal source, whether it's a turntable, musical instrument or microphone. The ultra-low noise audio conditioning circuitry allows the preamp to boost audio to levels that are more manageable for various types of audio equipment. You'll find it easier to adjust the recording level volumes of different sources from microphones and instruments alike. You should position your preamp close to the source to reduce unwanted noise and interference. Preamps can sometimes come built into the stereo equipment, but if that's not the case, the PP444 is an easy install, wise choice and great addition to any musician or producer. Take your sounds and audio production skills to the next level with the PP444 Preamplifier.

### Features and Technical Specs:

- Converts Phono Signals to Line Level Signals
- State-of-the-Art Circuitry Accommodates Magnetic Pickups
- Ultra-Low Noise Operation Improves Sound Performance
- Connects to Turntables and Other Studio Equipment
- Input Sensitivity: 3mV at 50K Ohms (Phono)
- Dedicated RCA and 1/4" Output Connectors
- Power On LED Indicator
- Power Supply Included, DC 12V/150mA
- Dimensions (W x D x H): 4.09" x 2.28" x 1.38"



WARNING:

This product can expose you to a chemical or group of chemicals, which may include "Nickel Carbonate" which is known in the state of California to cause cancer, birth defects, or other reproductive harm. For more info, go to <https://www.p65warnings.ca.gov/>.

### Questions? Issues?

We are here to help!

Phone: (1) 718-535-1800

Email: [support@pyleusa.com](mailto:support@pyleusa.com)