

PYLE
PyleUSA.com



PPHP1299WU

Portable Hi-Power Wireless BT

PA Loudspeaker System

with Built-in Rechargeable Battery,
Includes (2) Microphones, 12" 1000 Watt

USER MANUAL

INDEX

Operation	1
User's General Instructions	2
Controls and Connections	2
Specifications	3



CAUTION: TO REDUCE THE RISK OF ELECTRIC SHOCK, DO NOT REMOVE COVER [OR BACK]



THIS PRODUCT MUST BE EARTHED

NO USER-SERVICEABLE PARTS INSIDE, REFER SERVICING TO QUALIFIED SERVICE PERSONNEL

OPERATION

1. Prior to switching ON, turn volume down to minimum.
2. Connect the audio source to the appropriate input socket.
3. Connect to the mains supply.
4. Switch ON the audio source followed by the active speaker.
5. Set the volume with the applicable control.
6. Adjust the bass + treble.
7. When using the speaker using the built-in battery, if you find the MP3 screen flickering which indicates the battery voltage is low, turn OFF the speaker box and charge battery.
8. If you don't use the unit frequently, please do remember to charge the unit every three months to keep the battery in good condition.

Note: Please turn OFF the product when fully charged.

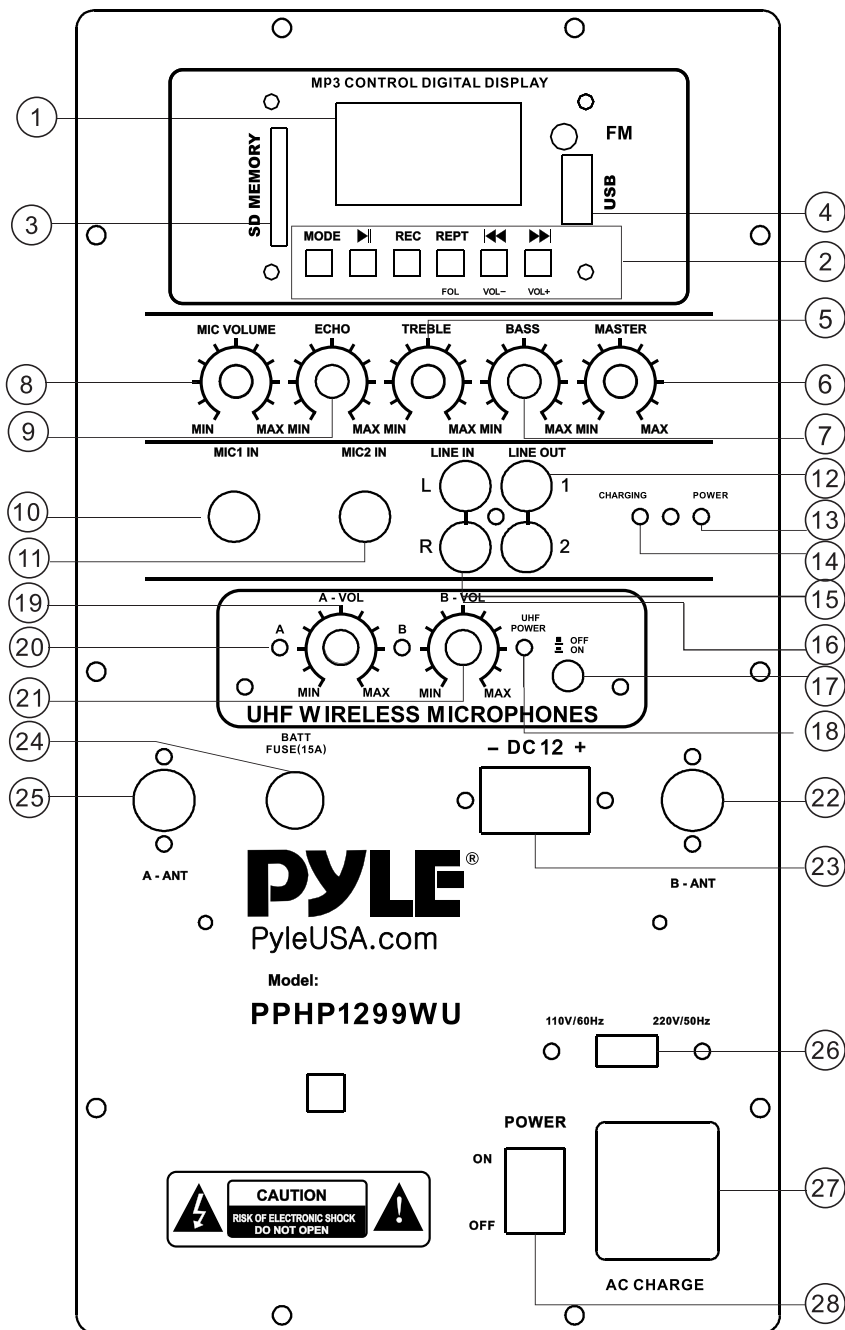
INSTRUCTIONS

- Do not overload the box to avoid damage to the speakers.
- Do not place to an open fire (candles etc) on top or next to the box- **FIRE HAZARD**
- Only connect to an earthed mains outlet of 110Vac/60Hz.
- For indoor use only. If the box will be used outdoors, you need to make sure that no humidity can enter the box.
- When not in use, unplug the unit from the mains.
- Unplug the unit from the mains prior to checking or replacing the fuse.
- Make sure that the box is placed on a stable, strong surface.
- The boxes can be hung. Use only strong and approved mounting material. During the mounting, make sure that nobody is standing below the mounting area.
- Do not place liquids on the box and protect it against humidity. Humidity can shorten the life time considerably.
- Only use suitable means of transportation if you want to move the box -
USE EXTRA CAUTION HANDLING THE BACK PANEL.
- Always unplug the unit during a thunderstorm or when it is not in use.
- If the unit has not been used for a long period of time, condensation can occur inside the housing. Please let the unit reach room temperature prior to use.
- Never try to repair the unit yourself.
It does not contain any user serviceable parts.
- Run the mains lead in such a way that nobody can fall over it and nothing can be put in it
- Set the unit to the lowest volume prior to switching it on.
- Keep the unit out of the reach of children.

CONTROLS AND CONNECTIONS

1. LED Screen
2. Mp3 control
3. SD Card Slot
4. USB PORT
5. Treble Control
6. Volume Control: It is used to adjust the signal level from the Mp3 / Line input/Microphone
7. Bass control
8. Line Vol: It is used to adjust the signal level from the RCA line input
9. ECHO EFFECT FOR MICROPHONE
- 10/11. Mic input
6.35mm Jack for a microphone input
12. RCA line output
13. Power **ON/OFF** LED
14. Battery quantity LED
15. RCA line input
16. B-VOL: It is used to adjust the signal level of B wireless microphone
17. Wireless microphone select: Press it to power **ON/OFF** the wireless microphone
18. Wireless Mic power LED
19. A-VOL: It is used to adjust the signal level of A wireless microphone
20. Chanel A wireless Mic power LED
21. Chanel B wireless Mic power LED
- 22/25. Wireless microphone antenna
23. External Power: DC 12V Input
24. FUSE
26. Voltage switch
27. AC power: Connect the incorporated Ac power cord
28. **ON/OFF** Power switch

CONTROLS AND CONNECTIONS



PPHP1299WU

Portable Hi-Power Wireless BT PA Loudspeaker System

with Built-in Rechargeable Battery,

Includes (2) Microphones, 12" 1000 Watt

Features:

- Versatile PA Loud Speaker Sound System
- Bluetooth Wireless Music Streaming Ability
- Active 2-Way Full Range Stereo Sound
- Heavy Duty, Rugged & Reliable
- Built-in Rechargeable Battery
- FM Radio with Automatic Station Recognition
- USB Flash & SD Memory Card Readers
- Includes (2) Wireless Microphones
- (2) 1/4" Microphone / Guitar Inputs
- Independent Adjustable Mic/Guitar Volume Controls
- RCA (L/R) Line Input Connector Jacks
- Ability to Connect External Devices
- RCA (L/R) Line Output Connector Jacks
- Ability to Connect to Additional Speaker Systems
- Rear Panel Button & Rotary Knob Control Center
- Volume, Bass and Treble Adjustment
- Wired Microphone Compatible
- 12 Volt Inlet for Car / RV Use
- Digital LCD Display
- ID3 Tag Song Readout Info
- Battery LED Indicator Lights
- Engineered Fortified Molded Cabinet
- Convenient Rolling Wheels and Extendable Carry Handle
- 35mm Speaker Stand Mount

Bluetooth Wireless Streaming:

- Instantly Stream Music from Your Bluetooth Devices
- Works with All Your Favorite Bluetooth Devices (iPhone, Android, Smartphone, iPad, Tablet, PC, etc.)
- Bluetooth Version: 4.0
- Bluetooth Wireless Range: 30'+ Feet

What's in the Box:

- PA Speaker
- (2) Wireless Handheld Microphones
- Attachable Mic Holders
- Attachable Rolling Wheels
- Remote Control
- Power/Charging Cable

Technical Specs:

- Max Power Output: 1000 Watt
- RMS Power Output: 500 Watt
- Battery Life: Up to 4 Hours
- Battery Charge Time: About 8 Hours
- Subwoofer Frequency: 80-18Khz (-10dB)
- Subwoofer: 12" -inch
- Tweeter: 1.34" -inch
- Impedance: 4 Ohm
- Sensitivity: 95dB (+/-2dB)
- S/N Ratio: ≥ 50 dB
- T.H.D.: 10% 20watts
- Frequency Response: 80-18Khz (-10dB)
- Power: 110-220 Volt Switchable
- Maximum USB/SD Card Support: 16GB
- Digital Audio File Support: .mp3, .wma
- Dimensions (L x W x H): 13.4" x 12.2" x 22.6"

PYLE

PyleUSA.com



VISIT US ONLINE:

Have a question?

Need service or repair?

Want to leave a comment?

PyleUSA.com/ContactUs

PYLE