

**PYLE**<sup>®</sup>  
PyleUSA.com

**Questions? Comments?**

We are here to help!

Phone: (1) 718-535-1800

Email: [support@pyleusa.com](mailto:support@pyleusa.com)

**California Prop 65 Warning**

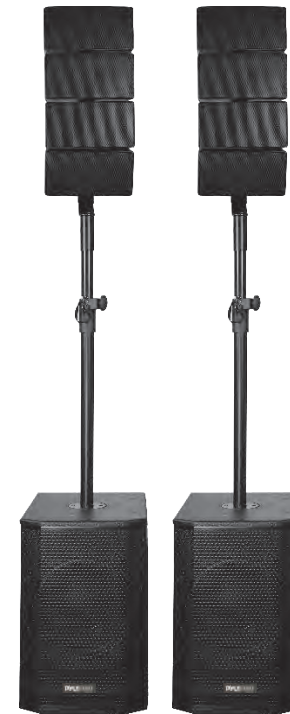
**⚠ WARNING:**

This product contains Nickel carbonate which is known to the state of California to cause cancer birth defects and other reproductive harm. Do not ingest.

For more info go to: [www.P65warnings.ca.gov](http://www.P65warnings.ca.gov)

**PYLE**<sup>®</sup>

PyleUSA.com



***PS12K2ACT***

**Wireless BT Streaming PA Loudspeaker System**

Powered 3-Way Full Range Sound, USB/SD Port,  
EQ, Echo 2 x 12" Active and Passive Subwoofer,  
8 x 4" Woofer, 4 x 1" Tweeter

***USER GUIDE***

## PLEASE READ THIS MANUAL CAREFULLY BEFORE OPERATION

### Features:

- Loudspeaker PA System
- Rugged, Durable & Reliable Sound
- Wireless BT Streaming Ability
- Speaker System: 2x12.0" Subwoofer, 8x 4.0" woofer, 8x 1.0" Tweeter
- Compression Driver with PEI Diaphragm
- 3-Way Full Range Audio Projection
- Built-in Digital Audio Amplifier
- XLR Microphone Input
- 1/4" Jack, RCA(L/R) Stereo Line Input
- Connect & Stream Audio from External Devices
- USB Flash Drive & SD Memory Card Readers
- Digital LCD Display
- Rear Panel Rotary Dial & Button Control Center
- Master Volume, Mic Volume, Treble, Bass, Effect Adjustable
- 5 Band graphic equalizer
- Integrated Carry Handles
- 35mm Speaker Stand Mount Compatible

### What's in the Box:

- 12" BT Active Subwoofer Speaker
- 12" Passive Subwoofer Speaker
- (8) 4" Passive Line Array Speaker
- (2) Stand
- Power Cable
- Audio Cable 98.43" -inches (One Side is 6.35 1/4" Jack, the Other Side is SpeakOn)
- Audio Cable 236.22" -inches (One Side is 6.35 1/4" Jack, the Other Side is SpeakOn)
- (6) Audio Cable 9.8" -inches (Both Sides are SpeakOn)
- Audio Cable 196.85" -inches (Both Sides are SpeakOn)
- Remote Control

### Subwoofer:

- Size: 12" -inch
- Material: Stamped Steel Basket
- Impedance: 8 Ohm
- Magnet: 50 oz.
- Voice Coil: 60.6mm, 2.5" -inch
- Sensitivity: 93dB
- Frequency Response: 45Hz-3kHz

### Woofers:

- Size: 4" -inch
- Material: Stamped Steel Basket
- Impedance: 16 Ohm
- Magnet: 10 oz.
- Voice Coil: 25.5mm, 1" -inch
- Sensitivity: 88dB
- Frequency Response: 80Hz-8kHz

### Tweeter:

- Size: 1.0" -inch
- Material: PEI
- Impedance: 8 Ohm
- Sensitivity: 104dB
- Voice Coil: Kapton
- Frequency Response: 800Hz-20kHz

### Technical Specs:

- Max Power Output: 1320 Watt
- RMS Power Output: 660 Watt
- Amplifier Class: D
- Digital Audio File Compatibility: MP3, WMA
- Maximum SD/USB Flash Memory Support: 32GB
- 2 XLR and 2 1/4" TS/Unbalanced with RCA
- T.H.D.:1%
- Crossover Frequency: 120Hz/3.3kHz
- Voltage: AC 110/220V 60/50HZ
- Active Subwoofer Dimensions (L x W x H): 13.58" x 18.11" x 19.69" -inches
- Passive Subwoofer Dimensions (L x W x H): 13.58" x 18.11" x 19.69" -inches
- Passive Line Array Dimensions (L x W x H): 9.45" x 5.71" x 4.72" -inches

### Wireless BT Streaming:

- Instantly Stream Music from Your BT Devices
- Works with All Your Favorite BT Devices (iPhone, Android, Smartphone, iPad, Tablet, PC, etc.)
- Wireless BT Version: 5.0
- Wireless BT Range: 100'+ Feet
- Wireless BT Network Name: 'Pyle'

## Control Panel

MP3 Media Player with LCD Display  
IR: Remote Control Receiver

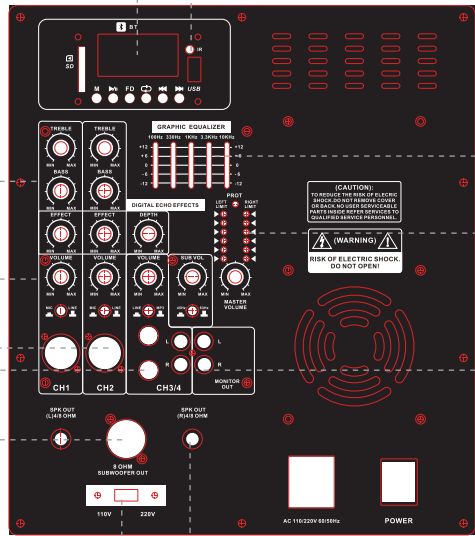
Individual Treble/Bass Control

Four Independent volume controls  
and master volume control

Two XLR inputs for  
Mic/Line-level Source

Stereo 6.35mm input  
for line-level source

Speakon output to  
passive subwoofer



5 Band  
graphic equalizer

Overload Indicator

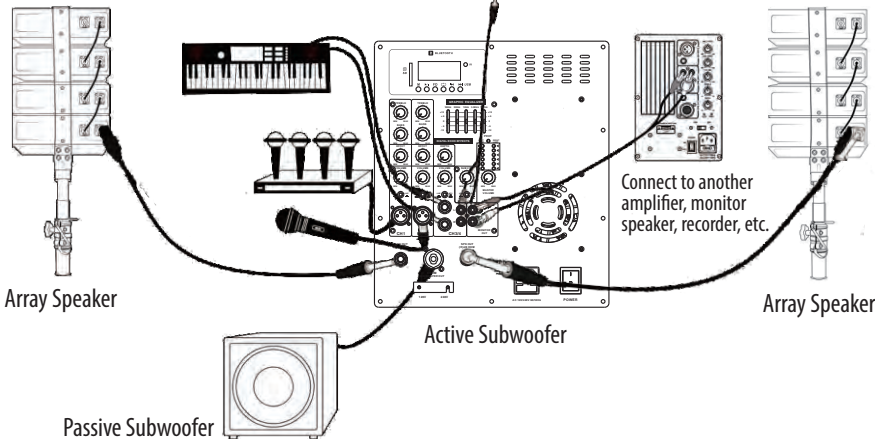
Stereo RCA  
inputs & outputs

6.35mm Output to array speakers

Selectable 110V/220V Voltage

## Connection

Stereo RCA input for iPhone, iPad,  
iPod, Android Devices, laptop,  
computer, TV, DVD, CD player etc

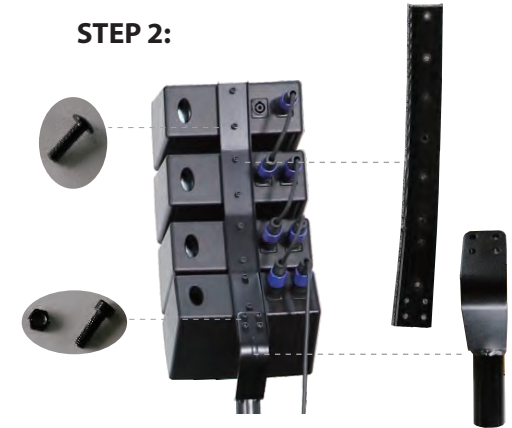


## Assembly

### STEP 1:



### STEP 2:



Align four identical speakers according to the number stuck from top to bottom, the icon of each speaker should be placed to direction with the "▲" on the bottom.

Attach the long bracket and short bracket to the array speaker, secured with screws and nuts.

### STEP 3:

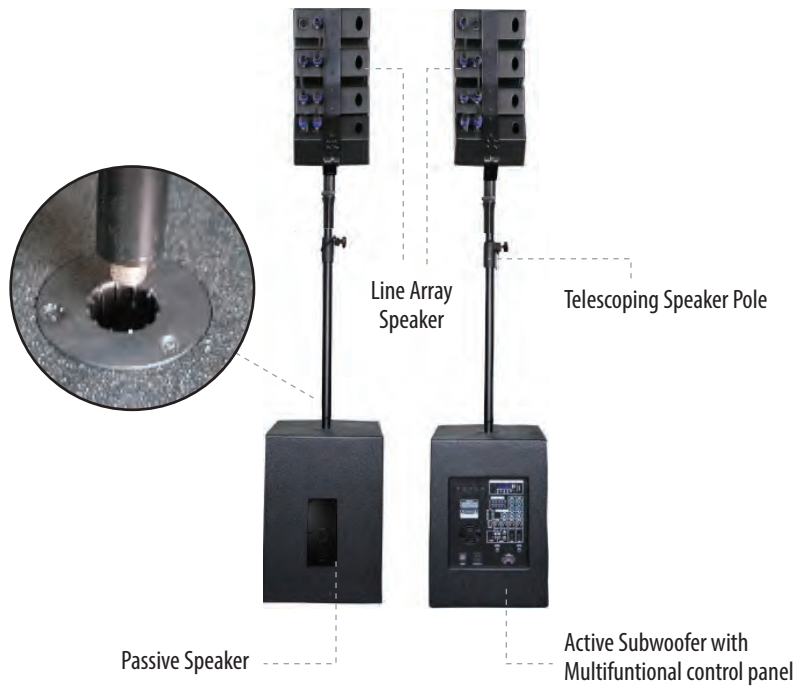


Connect the speakers with 8-in. cables. Then attach the array speaker to the stand pole and the subwoofer.

### STEP 4:



Repeat the above steps for the second set.



**Adjustable Height**

