

**PYLE**  
PyleUSA.com



**VISIT US ONLINE:**  
Have a question?  
Need service or repair?  
Want to leave a comment?  
[PyleUSA.com/ContactUs](http://PyleUSA.com/ContactUs)

**PYLE**

**Questions? Issues?**

We are here to help!

Phone: (1) 718-535-1800

Email: [support@pyleusa.com](mailto:support@pyleusa.com)



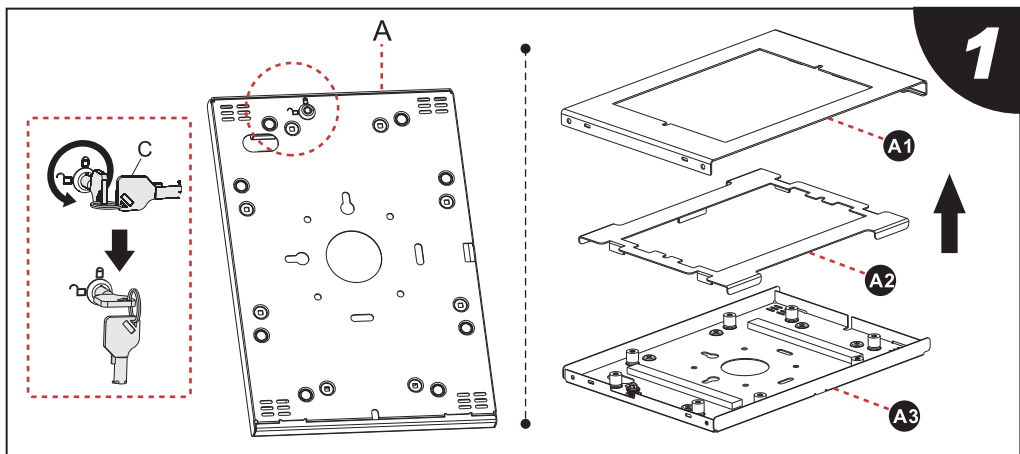
*PSPADLK15*

**Full motion Anti-Theft Tablet Bracket**

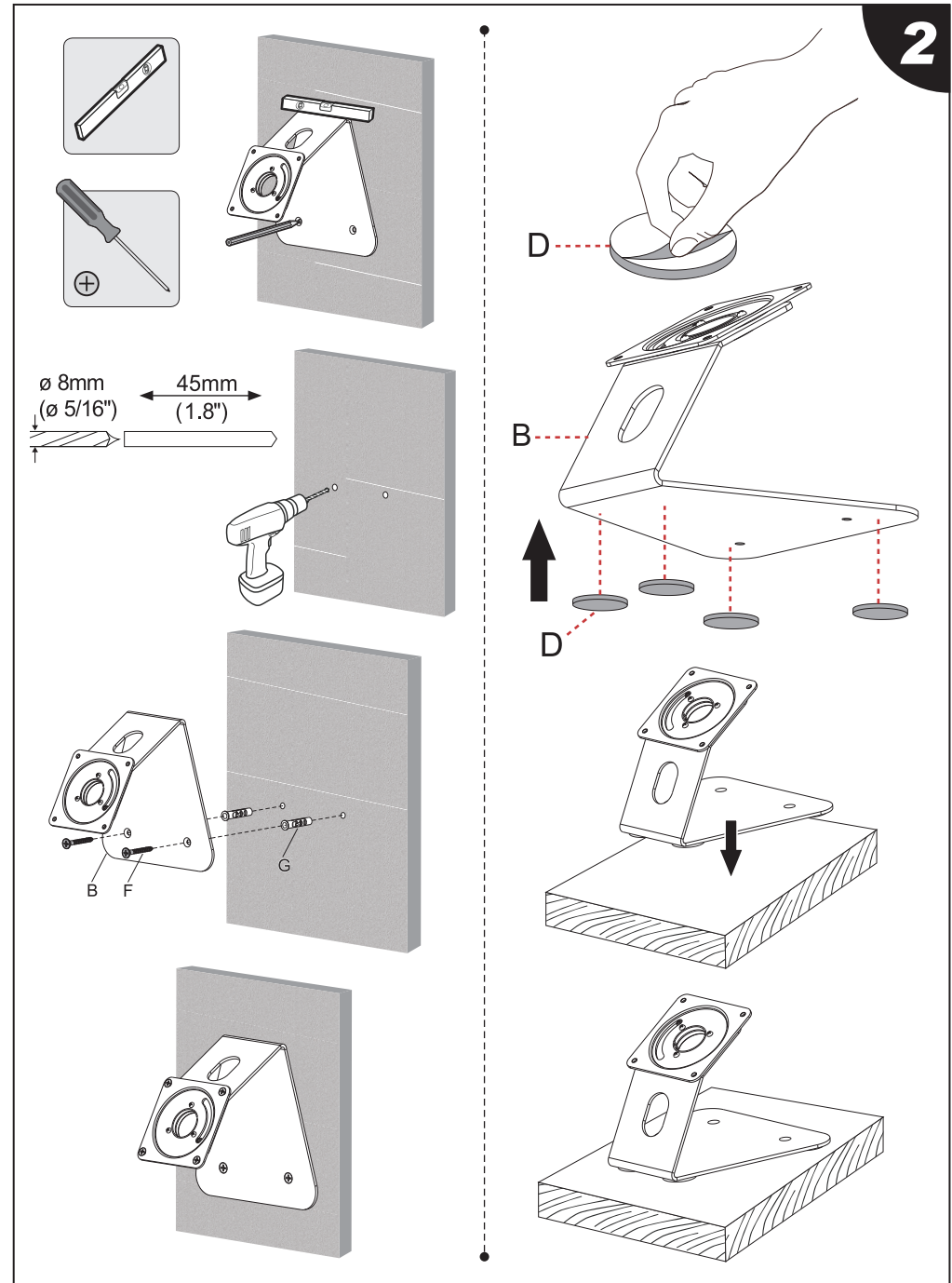
Fully Secured Case with Restricted Pin-Hole

***User Manual***

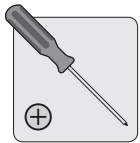
PART NO.	DESCRIPTION	QUANTITY
A	enclosure	1
B	base	1
C	key	1
D	rubber pad	4
E	M5x6	4
F	ST4.8x38	2
G	expansion anchor	2



Samsung® and Samsung® product names / Apple® and Apple® product names referred to on the package and product information are trademarks or registered trademarks of Samsung Electronics Co., Ltd. / Apple Computer, Inc.. All other product names and services may be trademarks or service marks of their respective owners.  
 Pictures of iPad / iPad Pro/ iPad Air / Samsung Galaxy Tab A (2019) are for illustration purpose only. The iPad / iPad Pro/ iPad Air / Samsung Galaxy Tab A (2019) are not included.

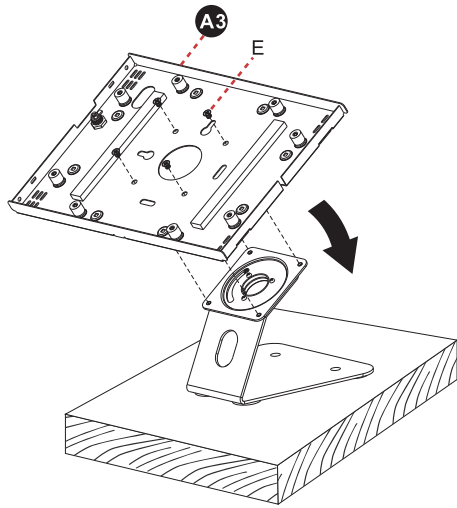
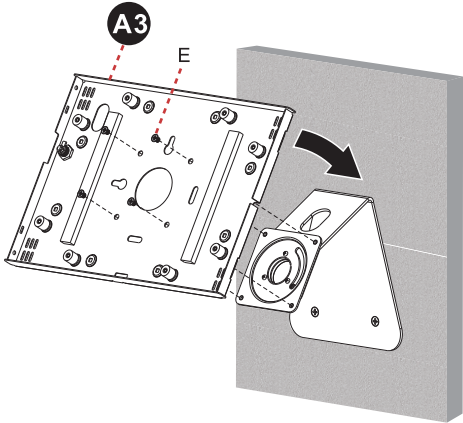


2



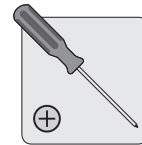
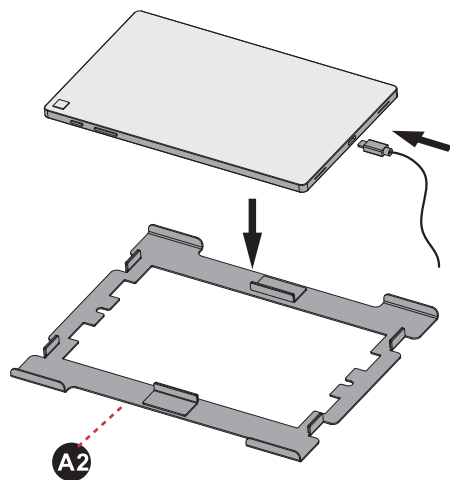
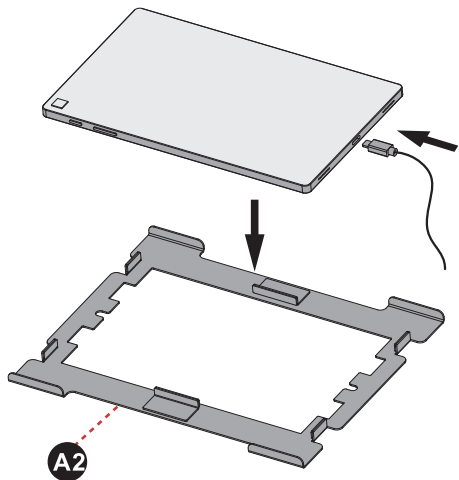
**For 10.1" Samsung Galaxy Tab A (2019)**

**3a**



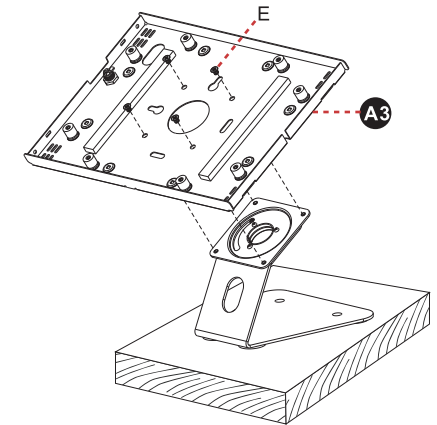
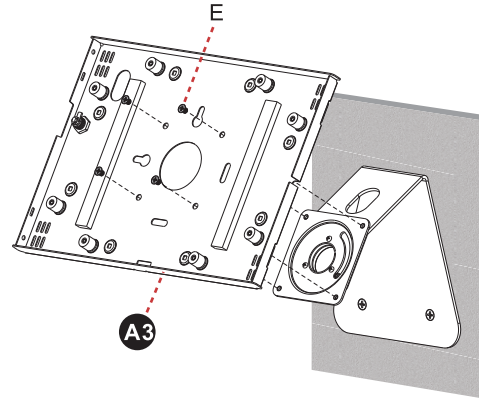
**For 10.1" Samsung Galaxy Tab A (2019)**

**For 10.1" Samsung Galaxy Tab A (2019)**



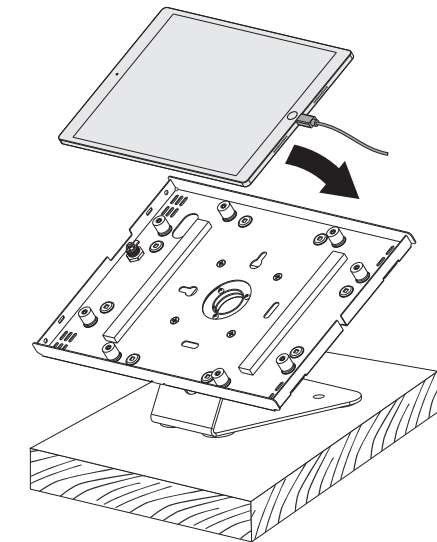
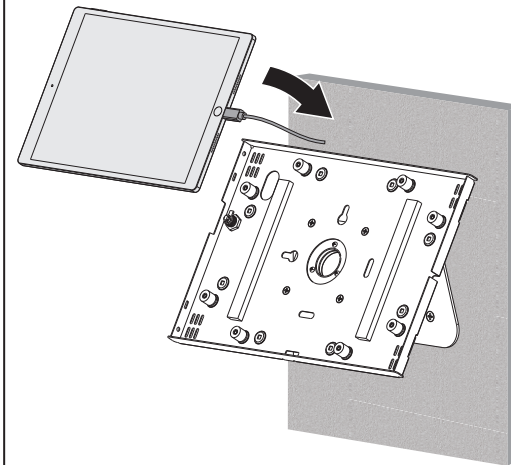
**For 10.2" ipad | 10.5" ipad pro | 10.5" ipad air (Gen 3)**

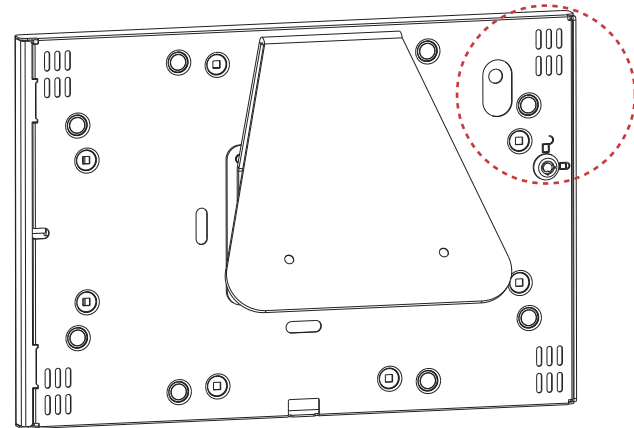
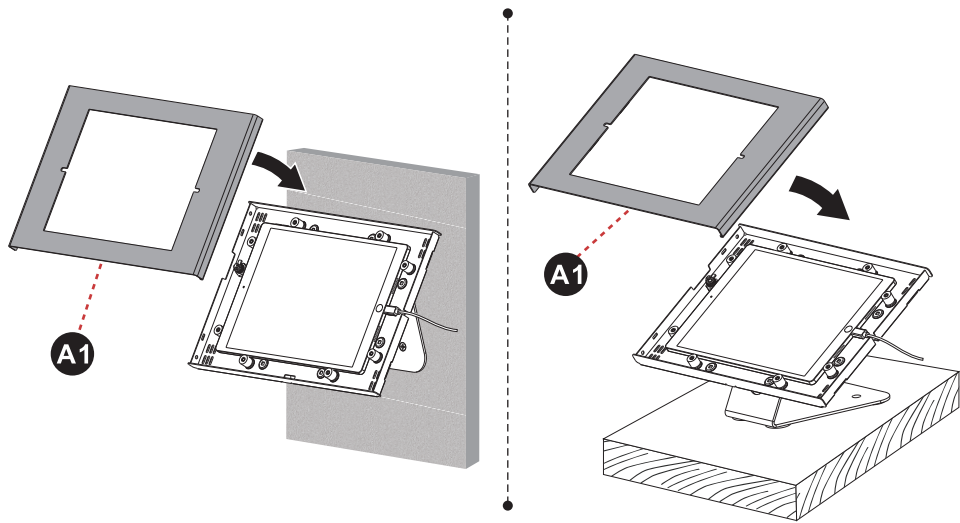
**3b**



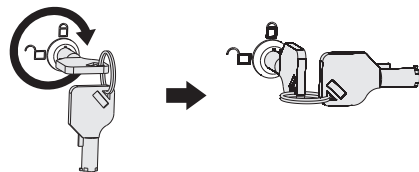
**10.2" ipad/  
10.5" ipad pro/  
10.5" ipad air (Gen 3)**

**10.2" ipad/  
10.5" ipad pro/  
10.5" ipad air (Gen 3)**





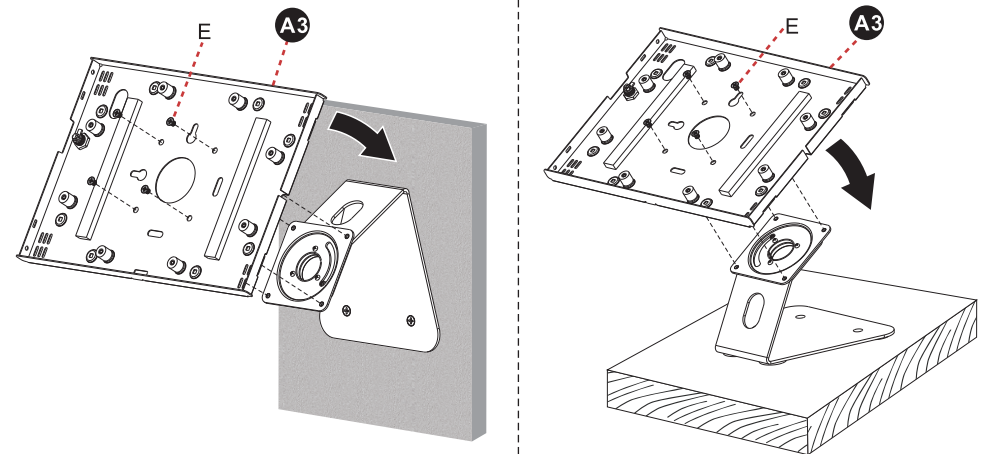
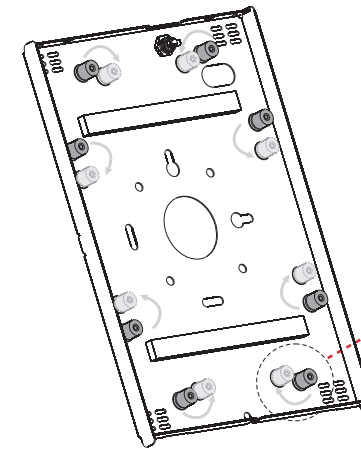
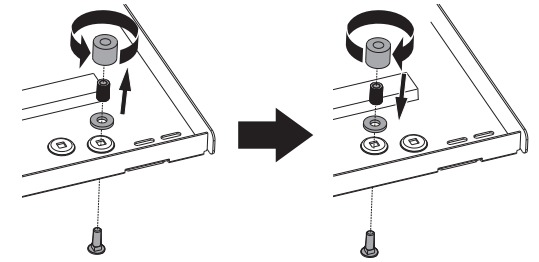
Before locking the enclosure, confirm the camera is visible through the slot as shown.



For 9.7" iPad

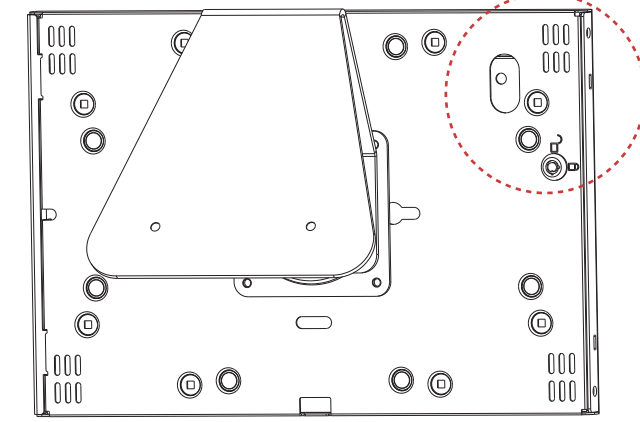
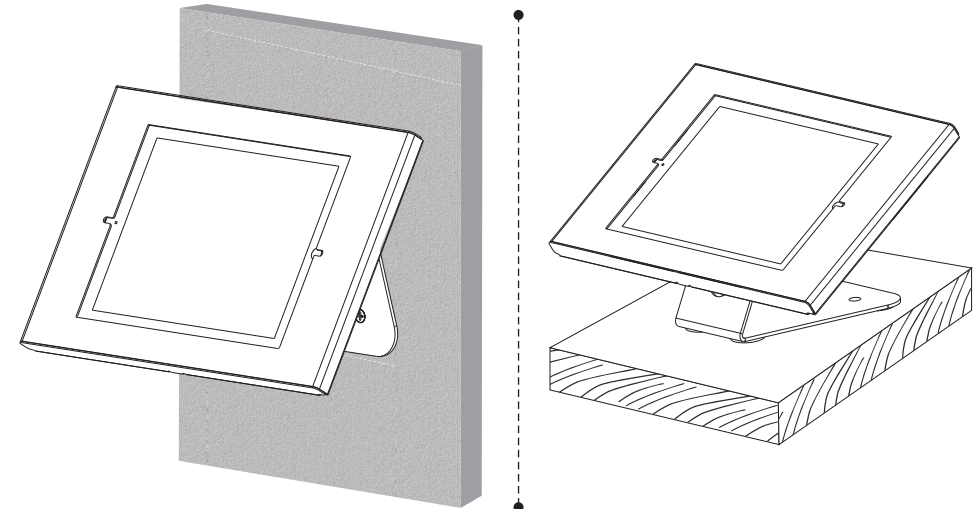
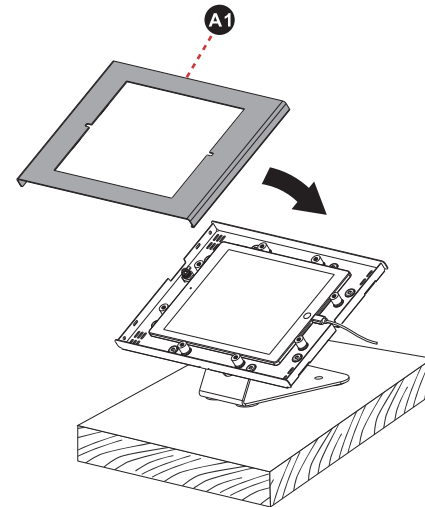
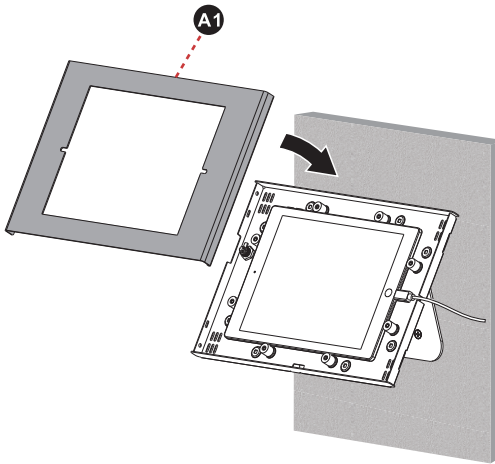
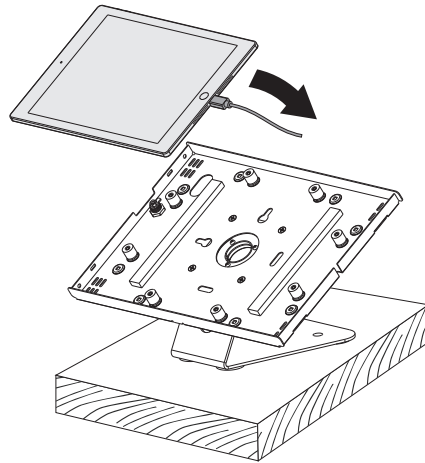
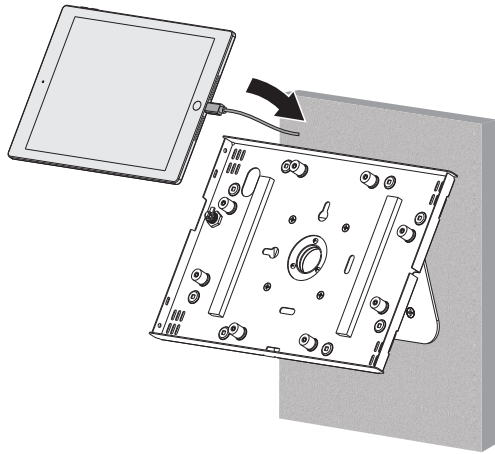
3C

Move the spacers to the positions marked by the arrows as shown.

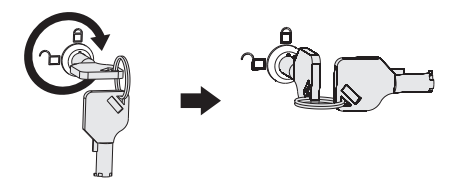


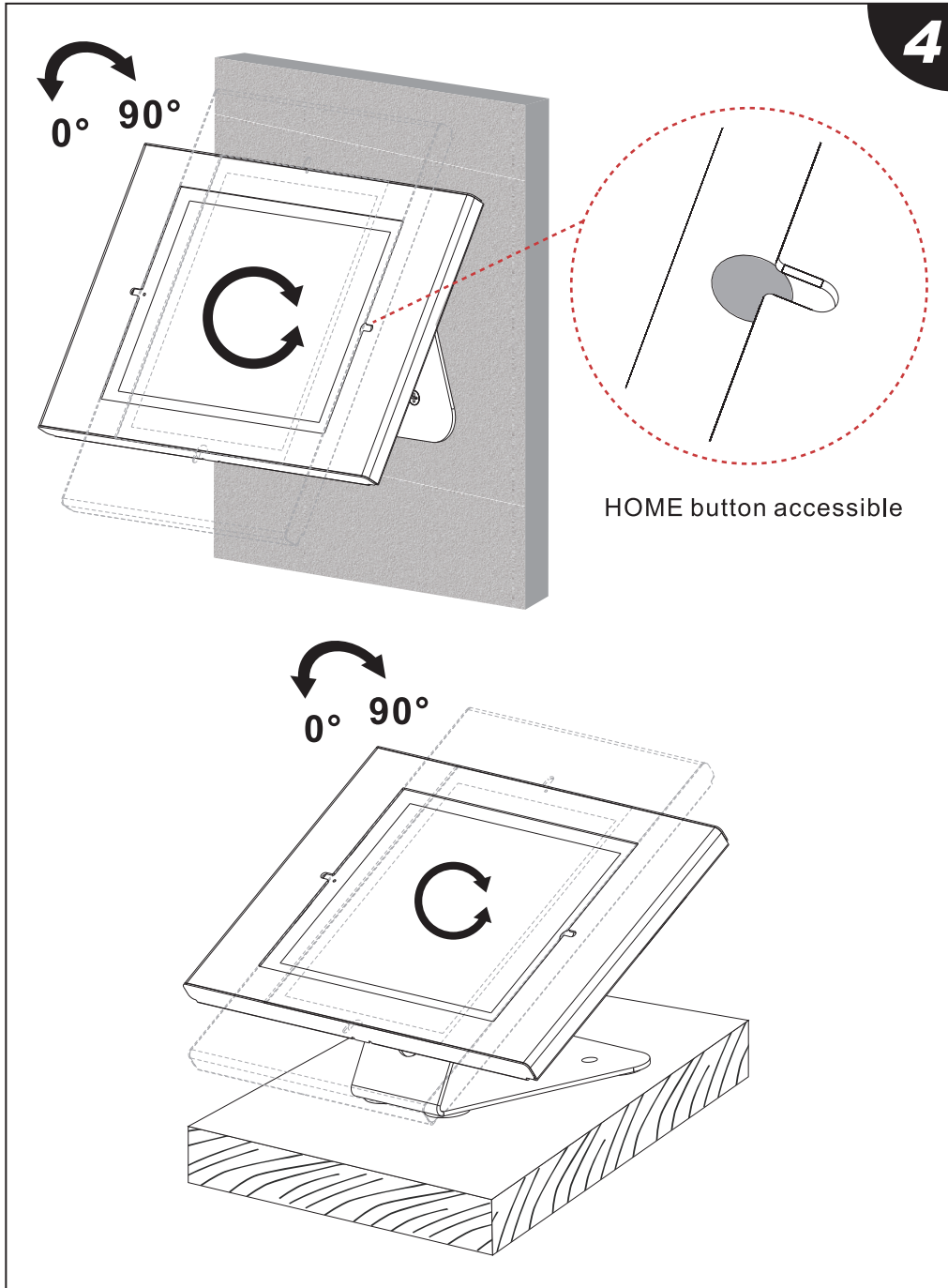
9.7" iPad

9.7" iPad



Before locking the enclosure, confirm the camera is visible through the slot as shown.





#### Features:

- 90 Degrees Rotation Allows for Easy Set-Up of Portrait and Landscape Tablet Orientation
- Adjustable Bumper Guards Ensure a Perfect Fit
- Anti-theft Lock and Key Mechanism
- Choose to Either Allow or Block Access to Home Button
- Feed the Cable through the Stand for an Organized Look
- Keeps Tablet Safe and Allows Quick Removal
- Tamper-proof iPad Enclosure
- Fully Secured Case with Restricted Pin-Hole
- Compatible with iPad, iPad Air, iPad Pro, Samsung Galaxy Tab A (2019)
- Front Facing Camera Accessible
- Interchangeable Base Plate
- Adjustable Padding for Compatibility
- Portable Stand with Cable Management for Any Counter Top

#### What's in the Box:

- Anti-Theft Tablet Bracket

#### Technical Specs:

- Construction Materials: Steel and Engineered ABS
- Compatibility: iPad, iPad Air, iPad Pro, Samsung Galaxy Tab A (2019)
- Pole Height: 9 inches
- Dimensions Tablet Holder: 8.66" x 12.71" -inches
- Dimensions of Base: 6.54" x 3.15 -inches