



PSU990KX

Bench DC Power Supply

AC-to-DC Power Converter with Dual USB Charge Ports,
Car Cigarette Lighter Plug (4.5 Amp)

USER MANUAL

FEATURES

Your **PYRAMID** Heavy-Duty 4-Amp Switching DC Power Supply is designed to use AC power-to-power equipment that requires 12V DC automotive power. The power supply converts standar 120V AC household power to 13.8V DC power and can supply up to 4.5-Amp of continuous power.

Note: Your vehicle's electrical system provides 13.8V-15V when the engine is running.

If you are electronic hobbyist or technician, you will appreciate the many uses for the power supply at your workbench or in your house.

For example, use your CB mobile transceiver as a bass station, check the operation of auto sound system before you install them in your vehicle, or even power marine equipment such as pumps.

POWER SUPPLY FEATURES

Regulated Output Voltage-Makes it safe to use with mobile CBs, Ham radios, CD players, tape players or anything you would power with a vehicle's DC electrical system. Cooling and Fan Control a temperature controlled fan has been provided to improve cooling at high loads. It will come on only when the temperature of the power transformer is above 50°C or 122°F due to higher loads. In case the fan fails or the air flow is blocked, a second temperature sensor mounted on the power transformer will activate over temperature shut down at 100°C or 212°F. The output voltage will be automatically resumed once the unit cools down. Electronic Overload Protection-automatically shuts off standard 120V AC input power to the power supply when its output is overloaded. Overheat Protection Circuit automatically shuts off if it overheats. Combo Output Connectors-act as both binding posts and banana plug terminals.



IMPORTANT SAFETY INSTRUCTIONS

DANGER: TO REDUCE THE RISK OF FIRE OR ELECTRIC SHOCK, CAREFULLY FOLLOW THESE INSTRUCTIONS.

WARNING: This unit should not be directly connected to a battery for charging or for battery back-up. Battery charging and battery back-up may be undertaken only when the battery is connected through suitable external isolating diodes and charge limiting resistor. The isolating diodes will ensure that battery does not back power the power supply. When a battery is deeply discharged, it will initially draw a very large charging current and force the power supply into current limit mode for prolonged periods. This is harmful for the power supply. The charge limiting resistor will limit the charging current to ensure the maximum charging current is well below the current limit value of the power supply.

This manual contains important safety and operating instructions for this power supply. Before you use the power supply, read all the instructions and cautionary markings in this manual, power **ON** the power supply, and the product that you will connect to the power supply, to reduce the risk of injury:

- Do not use the power supply near water (for example, a bathtub, washbowl, kitchen sink, laundry tub, wet basement, or swimming pool).
- Do not place the power supply on an unstable cart, stand or table. If the power supply falls, it could injure a person or cause serious damage to the power supply.
- Do not overload power outlets or extension cords. An overload can result in fire or electric shock.
- Do not use an extension cord unless absolutely necessary. Using an improper extension cord could result in a risk of fire and electric shock. If an extension cord must be used, make sure:
 - a. The pins on the extension cord's plug are of the same number, size, and shape as those of the plug on the charger.
 - b. The extension cord is properly wired and in good electrical condition.
 - c. The extension cord's wire size is at least **18 AWG**.
- Do not disassemble the charger; take it to a qualified service technician when service or repair is required. Improper reassembly may result in a risk of electric shock or fire.
- Do not use an attachment not recommended, this could result in a risk of fire, electric shock, or injury to persons.
- Never push any object into the slot in the power supply. It could touch dangerous voltage points or short out parts resulting in a fire or electrical shock.

CAUTION:

TO REDUCE THE RISK OF DAMAGE

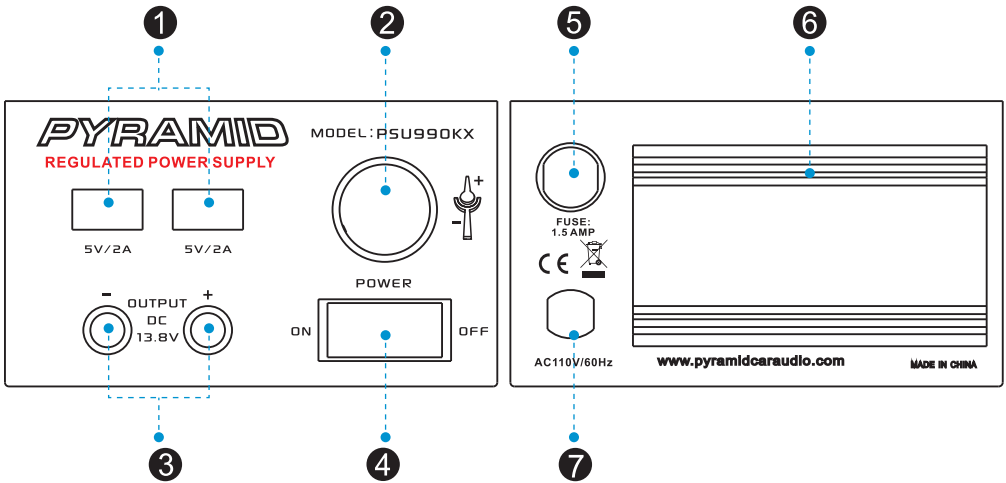
- Do not expose the power supply to rain or excessive moisture.
- Do not operate the power supply if it has been dropped or damaged in any way. Take it to a qualified service technician for repair.
- Slots and openings on the back and bottom of the power supply's cabinet are for ventilation. To ensure the power supply's reliable operation and to protect it from overheating, be sure these openings are not blocked or covered.
- The power supply should be operated only from a standard AC outlet that provides 120V AC/60 Hz, as indicated on the label. If you are not sure of the type of power supplied to your home, consult your local power company.
- For added safety, the power supply's polarized plug fits only into a polarized outlet. If your AC outlet is not designed for the polarized plug, have an electrician install the correct outlet, or use an adapter to ground the power supply safely.

Do not defeat the safety purpose of the plug.

- To protect the power supply during a lightning storm or when it is left unattended and unused for long periods of time, unplug it from the AC outlet. This will prevent damage to the power supply from lightning and power surges.
- Do not operate the power supply with a damaged cord or plug- replace them immediately. To reduce the risk of damage to the electric plug and cord:
 - a. Make sure the cord is not located where it will be stepped on, tripped over, or otherwise subjected to damage or stress.
 - b. Disconnect the power supply by pulling the cord's plug rather than the cord.
- Unplug the power supply from the outlet before attempting any maintenance or cleaning. Do not use liquid or aerosol cleaners. Use a damp cloth for cleaning and then wipe it dry immediately.
- If your power supply does not operate normally, in particular if any unusual sounds or smells come from it, unplug it immediately and contact a qualified service technician for repair.

CONNECTIONS

Caution: Make all other connections before you connect the power supply standard AC power.



1. USB Charge (5V/2A Each)

USB Charge works with all of today's latest devices

2. Cigarette Lighter

3. DC Outputs: Turn the sleeves of the red and black binding output posts counter clockwise to expose the wire hole.

Insert the device's negative wire (usually black) into the black binding post's wire hole, then tighten the binding post's sleeve to secure the wire in place. Insert the device's positive wire (usually red) into the red binding post's wire hole, then tighten the binding post's sleeve to secure the wire in place. If you are using the banana plugs connection, insert the plugs into the terminal's jack.

4. Power ON/OFF: Set the power supply's **POWER** switch to **ON** or **OFF**.

Note: The binding posts' wire holes can accommodate up to 16-gauge wire.

5. Fuse Protected with Auto-Reset

6. HEAT SINK

7. AC Power Supply Cable AC110V/60Hz

- Insert the device's positive wire (usually red) into the red binding post's wire hole, then tighten the binding post's sleeve to secure the wire in place.
- If you are using the banana plugs connection, insert the plugs into the terminal's jack.

Note: The binding posts' wire holes can accommodate up to 16-gauge wire.

6. AC Power Supply Cable AC115V-230V, 50/60Hz

7. Cooling Fan

OPERATION

To use the power supply after you connect the device to it, set **POWER** to turn it on with the red led light illuminated.

If the power supply's **POWER** switch does not light, check all connections and confirm the wall AC outlet has power.

If the outlet has power, set **POWER** to **OFF**, reduce the load (by using a device that does not require more than 4 Amps), then set **POWER** to **ON**. Your power supply's overload protection circuit automatically shuts down the power supply when overload and resets by turning **POWER** to **OFF**.

CAUTION: Place your power supply in a well ventilated open and cool area. Do not block the openings at the fan suction on the sides and the discharge openings on the bottom.

CAUTION: To reduce the risk of energy hazard, be careful not to short the output terminal during operation. Remove the output connections after use.

CAUTION: Your power supply might cause TV or radio interference even when it is operating properly. To determine whether your power supply is causing the interference, turn off your power supply. If the interference goes away, your power supply is causing it.

Try to eliminate the interference by:

- Moving your power supply away from the receiver.
- Connecting your power supply to an outlet that is on a different electrical circuit from the receiver.
- Contacting a qualified service technician for help.

PSU990KX

Bench DC Power Supply

AC-to-DC Power Converter with Dual USB Charge Ports,
Car Cigarette Lighter Plug (4.5 Amp)

Features:

- Home Desktop Workstation Power Supply
- Compact AC-to-DC Power Conversion
- Provides Constant Source of DC Voltage
- Cigarette Lighter Accessory Power Plug, 13.8V
- Dual USB Charge Ports
- USB Charge Support Works with All of Today's Latest Devices
- Simple Electronic Plug-in Operation
- Hassle-Free Power Terminal Connectors
- Eliminates the Need of Battery or External Power Source
- LED Backlit ON / OFF Switch
- Electronic Overload & Short Circuit Protection
- Rugged & Durable Housing Construction, Cabinet Heatsink
- Used for Component & Device Equipment Testing, Operation & Performance
- Pyramid Compact Hobby Power Supplies Safe for Tabletop Placement
- Perfect for Home, Garage, Hobby Shop, Repair Shop

Technical Specs:

- Power Output: 13.8V DC
- Continuous Power: 4.5 Amp Constant (7 Amp Surge)
- Recommended Wire Cable Size: 18 Gauge (AWG)
- Connectors/Hardwire Terminals: Red Positive (+) Black Negative (-)
- Load/Line Regulation: $< \pm 5\%$
- Output Voltage Accuracy: $\pm 0.02\%$ Volts
- Fuse Overload Protection: 1.5A/250V
- USB Power: 5V/2A
- Power Supply: 120V
- Dimensions (L x W x H): 7.7" x 4.9" x 2.8" -inches

Questions? Issues?

We are here to help!

Phone: (1) 718-535-1800

Email: support@pyleusa.com



WARNING:

This product can expose you to a chemical or group of chemicals, which may include "**Nickel Carbonate**" which is known in the state of California to cause cancer, birth defects, or other reproductive harm. For more info, go to <https://www.p65warnings.ca.gov/>.

Specifications are typical; individual units might vary.

Specifications are subject to change and improvement without notice.



PYRAMID