

**PYLE**  
PyleUSA.com



*PSUB8A*  
8" Active Down-Firing Subwoofer  
with Sealed Design (Black)

**USER GUIDE**

To ensure you will be completely satisfied with this product, read and understand this manual carefully before use. Keep the manual in a safe place. The Operating Manual must be passed on to all subsequent users.

## IMPORTANT SAFETY PRECAUTIONS



The lightning flash with arrowhead symbol within an equilateral triangle is intended to alert the user to the presence of uninsulated dangerous voltage within the product's enclosure that may be sufficient magnitude to constitute a risk: of electric shock to humans.

The exclamation point within an equilateral triangle is intended to alert the user to the presence of important operating instructions and maintenance in the literature accompanying the product.

This product should be operated only from the type of power source indicated at the back. **DO NOT** locate the product where the power cord will be abused by constant stepping on it. **DO NOT** allow anything to rest on the power cord. The AC power plug shall remain readily operable. Unplug the power cord during lightning storms or when not in used for a long period of time. **DO NOT** overload wall outlets and extension cords as this can result fire or electric shock.

No objects filled with liquids, such as vase shall be placed on it. **DO NOT** install the product near bathtub, washbowl, kitchen sink, laundry tub or any wet area.

**DO NOT** expose the product to dripping or splashing.

**DO NOT** install this product in a poorly ventilated or confined space.

When cleaning, unplug the power cord from the wall outlet.

**DO NOT** use strong solvents or liquid cleaners. Use a soft damp cloth for cleaning. For stubborn dirt, use a cloth moistened with mild detergent then wipe the dirt off. Use a soft dry cloth to wipe it dry.

**DO NOT** attempt to fix the product yourself.

Opening or removing the cover may expose you to dangerous voltage or other hazards. Refer servicing to a qualified service personnel.

### NOTES:

Read instructions carefully and completely. Keep this user's manual for future reference. Heed all warnings and follow all instructions.

**It is the perfect addition to any home theater system. The down-firing sub delivers bass more evenly throughout the room while the sealed enclosure (also known as acoustic suspension) offers tight, accurate bass.**

**This sub delivers realistic, room-shaking home theater bass effects.**

## ***HOOK UP***

### **1. Line Level Inputs**

The line level inputs are used to connect pre-out or preamplifier outputs directly to the subwoofer amplifier's internal crossover. These inputs are summed to mono. This is the preferred way to connect the subwoofer amplifier. If you have a mono line level signal from a "**Pro Logic**" or "**Dolby Digital**" receiver use the right "**red**" input.

**Note:** If a LFE mono output is connected, set the crossover point to maximum.

### **2. High Level Inputs**

If preamplifier outputs are not available, use the high-level (speaker) inputs. The speaker level inputs can be connected directly to the amplifier by inserting the speaker wire.

### **3. High Level Outputs**

There are also high level outputs which can be used to connect to main speakers or to another powered subwoofer with high level inputs.

**Note:** High level outputs are paralleled to the high level inputs with no high pass filter.

### **4. Crossover Frequency Control**

Continuously variable from 40Hz to 150Hz. Set the frequency control to where the audio does not sound "**muddy**", normally between 60-80Hz.

**Note:** If a LFE mono output is connected set the crossover point to maximum.

### **5. Gain Control**

Adjusts the output level of the subwoofer. Set the level to where the bass frequencies blend with the other speakers.

**Note:** Most people have a tendency to set the level too high, which makes the audio sound "**boomy**".

### **6. Phase Switch**

Selectable between 0° and 180°. This assists subwoofer placement.

The correct position will be the one that provides the most apparent bass output.

## 7. Power Switch (Auto On/Auto Off)

When the power is in the auto **ON** position, the amplifier will automatically turn **ON** when a signal is present.

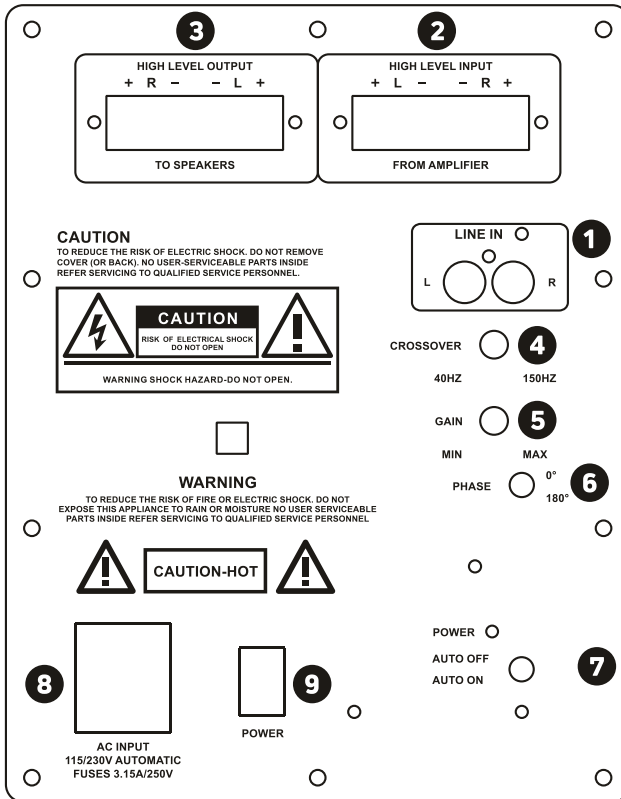
**Note:** In auto **OFF** mode, the power on LED is always green;

In auto **ON** mode, when there is no signal, the power LED is red and it will turn green when the unit is activated. It will turn red flashing light if there is no signal again after 15 minutes.

**8. AC Input:** Auto 115/230V, frequency from 50/60 HZ.

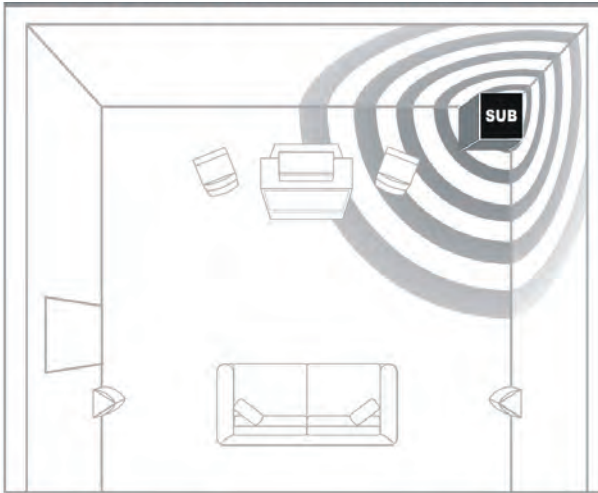
## 9. Power Supply

Turn on the amp by pressing the button "I", turn off the amp by pressing the button "O".



The Subwoofer System will produce more bass effect when placed in a corner. Choose a front corner that is available and near to your components for best performance in home theater applications.

## The SUB uses 3 surfaces to amplify the output



### **Technical Specs:**

- Construction Material: Non-Resonant MDF
- MAX Power: 150W
- RMS Power: 60W
- SW Driver: 8" Polypropylene Cone Woofer
- Frequency Response: 40Hz-150Hz
- Impedance: 8 Ohms
- Audio Signal Input: Stereo Line In, High-Level Input
- Speakers Output: High-Level Output
- Input Connectors: 2 x RCA, Spring-Loaded Terminal
- Power Output: AC 115V/230V, Auto Switch
- Product Dimensions (L x W x H): 13.5" x 10.8" x 10.4" -inches

**Note:** Input sensitivity is adjusted to the maximum for music quality for varying strength between the sources (sound console, CD/DVD, mobile phone, etc). If you hear a sound distortion, please turn down the volume.

### **California Prop 65 Warning**

**⚠ WARNING:**

This product contains Bisphenol A (BPA) which is known to the state of California to cause cancer birth defects and other reproductive harm. Do not ingest.

For more info go to: [www.P65warnings.ca.gov](http://www.P65warnings.ca.gov)

# PYLE

PyleUSA.com



**VISIT US ONLINE:**

*Have a question?*

*Need service or repair?*

*Want to leave a comment?*

[PyleUSA.com/ContactUs](http://PyleUSA.com/ContactUs)

PYLE

***Questions? Issues?***

We are here to help!

Phone: (1) 718-535-1800

Email: [support@pyleusa.com](mailto:support@pyleusa.com)