

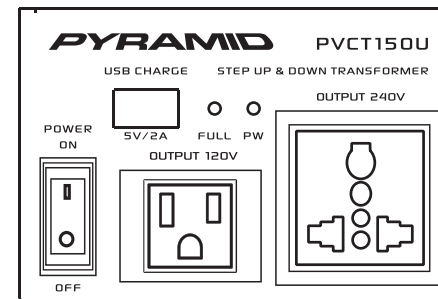


**Questions? Issues?**  
We are here to help!  
Phone: (1) 718-535-1800  
Email: [support@pyleusa.com](mailto:support@pyleusa.com)

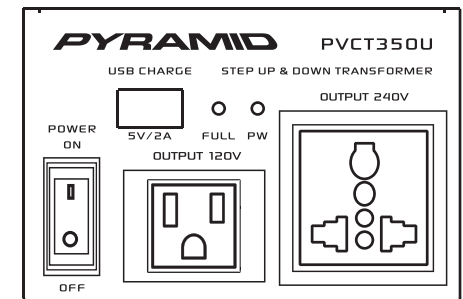


**WARNING:**

This product can expose you to a chemical or group of chemicals, which may include "Nickel Carbonate" which is known in the state of California to cause cancer, birth defects, or other reproductive harm. For more info, go to <https://www.p65warnings.ca.gov/>.



**PVCT150U**  
50 Watt



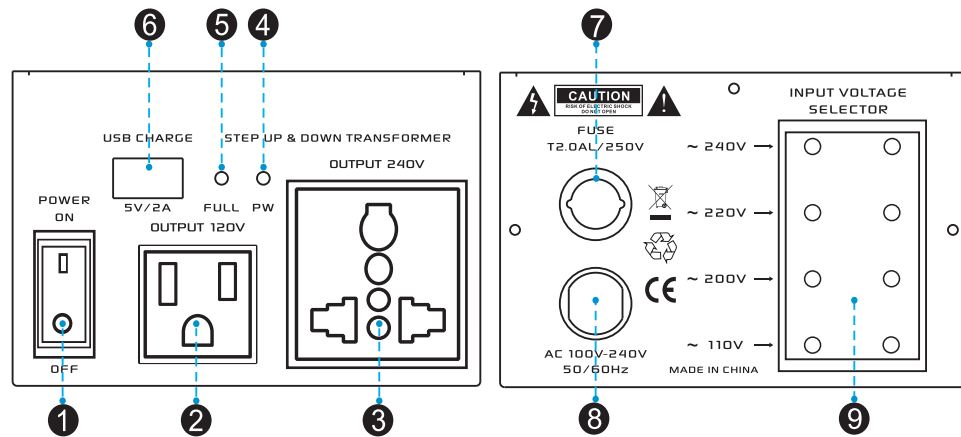
**PVCT350U**  
150 Watt

*PVCT150U - PVCT350U*  
Step Up Down Voltage Converter Transformer  
Power Supply Voltage Converter with USB Charge Port

**USER MANUAL**

## CONNECTIONS

**Caution:** Make all other connections before you connect the power supply standard AC power.



- 1. Power ON/OFF:** Set the power supply's POWER switch to ON or OFF
- 2. Output 110V:** Standard Power Output US Outlet
- 3. Output 220V:** Universal Power Output Outlet
- 4. PW:** Power Red LED Indicator
- 5. FULL:** Charge Green LED Indicator
- 6. USB Charge (5V/2A):** USB Charge Works with All of Today's Latest Devices
- 7. Fuse Protected with Auto-Reset**
- 8. AC Power Supply Cable AC 110V-240V, 50/60Hz**
- 9. Input Voltage Selector: Four Selectable Input Voltages:**  
110V/200V/220V/240V

## OPERATION

To use the power supply after you connect the device to it, set POWER to turn it on with the red led light illuminated. If the power supply's POWER switch does not light, check all connections and confirm the wall AC outlet has power.

If the outlet has power, set POWER to OFF, reduce the load (by using a device that does not require more than 4 Amps), then set POWER to ON. Your power supply's overload protection circuit automatically shuts down the power supply when overload and resets by turning POWER to OFF.

**CAUTION:** Place your power supply in a well ventilated open and cool area. Do not block the openings at the fan suction on the sides and the discharge openings on the bottom.

**CAUTION:** To reduce the risk of energy hazard, be careful not to short the output terminal during operation. Remove the output connections after use.

**CAUTION:** Your power supply might cause TV or radio interference even when it is operating properly. To determine whether your power supply is causing the interference, turn off your power supply. If the interference goes away, your power supply is causing it.

### Try to eliminate the interference by:

- Moving your power supply away from the receiver.
- Connecting your power supply to an outlet that is on a different electrical circuit from the receiver.
- Contacting a qualified service technician for help.

### Features:

- Power Voltage Converter
- Step-Up / Step-Down Transformer
- Universal AC Power Supply Conversion
- Rear Panel Voltage Selector
- Simple Electric Plug-in Design
- Built-in Fuse Protection
- USB Device Charge Port
- Includes European EU Power Adapter Plug
- Grounded Outlet: Accepts 3 or 2 Prong US / Euro Plugs
- Convenient Compact & Portable Style for Travel
- Rugged & Durable Chassis Housing
- Power ON / OFF Switch
- LED Indicator Lights
- Built-in Electronic Safety Circuit & Shock Protection
- For Home, Office and Commercial Applications

### Technical Specs:

- Power Output:
  - 50 Watt MAX (PVTC150U)**
  - 150 Watt MAX (PVCT350U)**
- Step Up: 120V to 240V
- Step Down: 240V to 120V
- Recommended Wire Cable Size: 18 Gauge (AWG)
- Fuse Protection:
  - 2.0A/250V(PVTC150U)**
  - 3.0V/250V(PVCT350U)**
- Selectable Voltage: 110V/200V/220V/240V
- USB Power Output: 5V/2A
- Construction Material: Engineered Metal Alloy Housing
- Power Cable Length: 1.6' ft.
- Power Supply: 120V/240V
- Dimensions (L x W x H): 6.6" x 4.7" x 4.0" -inches

*Specifications are typical; individual units might vary.*

*Specifications are subject to change and improvement without notice.*

### What's in the Box:

- Voltage Converter Transformer
- Europe (EU) Power Adapter
- (2) Spare Fuses