

**PYLE**<sup>®</sup>  
PyleUSA.com

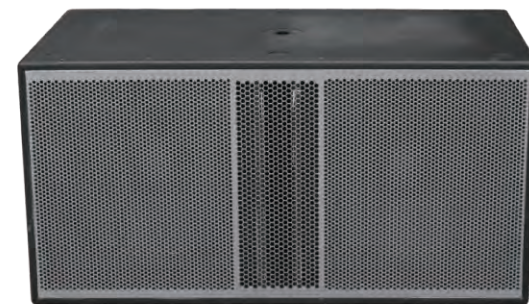
**Questions? Comments?**

We are here to help!

Phone: (1) 718-535-1800

Email: [support@pyleusa.com](mailto:support@pyleusa.com)

**PYLE**<sup>®</sup>  
PyleUSA.com



***PW12SUBA - PW15SUBA - PW18SUBA - PW218SUBA***

**Active Powered Subwoofer Box System**

with Professional Design

***USER GUIDE***

## PLEASE READ THIS MANUAL CAREFULLY BEFORE OPERATION

### **PW12SUBA**

#### **12" 1600W Active Powered Subwoofer Box System with Professional Design**

##### **Features:**

- DSP Digital Signal Processor with Boost for Extended Low-Frequency Control
- Power-On and Signal Input LED Indicators
- Signal Input LED Indicator
- Clip Limiter Circuitry with LED Indicator
- Balanced XLR + TRS Input Jacks
- Balanced XLR Thru Output Jacks for Parallel Connections
- Passive Heat Sink with Fan for Cooling
- Subwoofer Crossover 80Hz/100hz/120HZ Low Pass
- Subwoofer Level Adjustment
- Subwoofer Phase Control
- Built-in Pole Mount Socket
- Built-in Carrying Handles
- Custom Metal Grill

##### **What's in the Box:**

- Wooden Subwoofer
- Power Cable

##### **Technical Specs:**

- Construction Materials: Wooden Painted Enclosure with MDF Board
- Power Supply: 400 Watts RMS / 800 Watts Program / 1600 Watts Peak Power
- Woofer: 12"
- Magnet: 70oz
- Voice Coil: 3"
- Frequency Response: (+/-3dB) 48Hz - 200Hz
- Maximum SPL: 127dB Peak / 124dB Continuous
- Product Dimensions: 13.78" x 20.87" x 20.47" -inches



### **PW15SUBA**

#### **15" 3000W Active Powered Subwoofer Box System with Professional Design**

##### **Features:**

- DSP Digital Signal Processor with Boost for Extended Low-Frequency Control
- Power-On and Signal Input LED Indicators
- Signal Input LED Indicator
- Clip Limiter Circuitry with LED Indicator
- Balanced XLR + TRS Input Jacks
- Balanced XLR Thru Output Jacks for Parallel Connections
- Passive Heat Sink with Fan for Cooling
- Subwoofer Crossover 80Hz/100hz/120HZ Low Pass
- Subwoofer Level Adjustment
- Subwoofer Phase Control
- Built-in Pole Mount Socket
- Built-in Carrying Handles
- Custom Metal Grill

##### **What's in the Box:**

- Wooden Subwoofer
- Power Cable

##### **Technical Specs:**

- Construction Materials: Wooden Painted Enclosure with MDF Board
- Power Supply: 750 Watts RMS / 1500 Watts Program / 3000 Watts Peak Power
- Woofer: 15"
- Magnet: 126oz
- Voice Coil: 4"
- Frequency Response: (+/-3dB) 45Hz - 200Hz
- Maximum SPL: 128dB Peak / 125dB Continuous
- Product Dimensions: 23.23" x 19.69" x 21.65" -inches



## **PW18SUBA**

### **18" 3000W Active Powered Subwoofer Box System with Professional Design**

#### **Features:**

- DSP Digital Signal Processor with Boost for Extended Low-Frequency Control
- Power-On and Signal Input LED Indicators
- Signal Input LED Indicator
- Clip Limiter Circuitry with LED Indicator
- Balanced XLR + TRS Input Jacks
- Balanced XLR Thru Output Jacks for Parallel Connections
- Passive Heat Sink with Fan for Cooling
- Subwoofer Crossover 80Hz/100hz/120HZ Low Pass
- Subwoofer Level Adjustment
- Subwoofer Phase Control
- Built-in Pole Mount Socket
- Built-in Carrying Handles
- Custom Metal Grill



#### **What's in the Box:**

- Wooden Subwoofer
- Power Cable

#### **Technical Specs:**

- Construction Materials: Wooden Painted Enclosure with MDF Board
- Power Supply: 750 Watts RMS / 1500 Watts Program / 3000 Watts Peak Power
- Woofer: 18"
- Magnet: 126oz
- Voice Coil: 4"
- Frequency Response: +/-3dB) 40Hz - 200Hz
- Maximum SPL: 131dB Peak / 128dB Continuous
- Product Dimensions: 20.87" x 25.98" x 24.21" -inches

## **PW218SUBA**

### **2x18" 3000W Active Powered Subwoofer Box System with Professional Design**

#### **Features:**

- DSP Digital Signal Processor with Boost for Extended Low-Frequency Control
- Power-On and Signal Input LED Indicators
- Signal Input LED Indicator
- Clip Limiter Circuitry with LED Indicator
- Balanced XLR + TRS Input Jacks
- Balanced XLR Thru Output Jacks for Parallel Connections
- Passive Heat Sink with Fan for Cooling
- Subwoofer Crossover 80Hz/100hz/120HZ Low Pass
- Subwoofer Level Adjustment
- Subwoofer Phase Control
- Built-in Pole Mount Socket
- Built-in Carrying Handles
- Custom Metal Grill



#### **What's in the Box:**

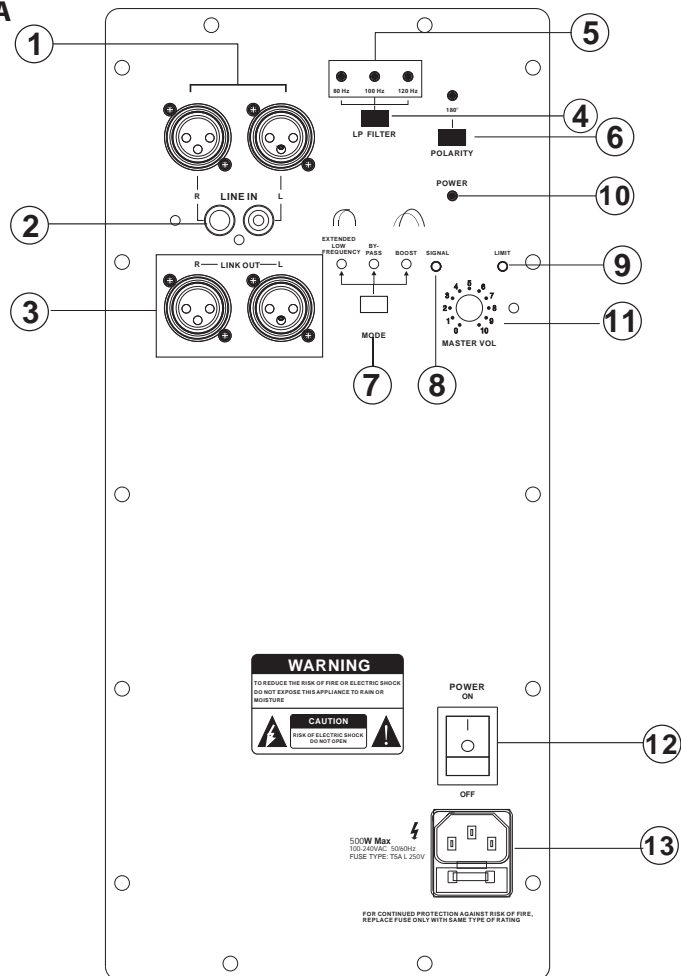
- Wooden Subwoofer
- Power Cable

#### **Technical Specs:**

- Construction Materials: Wooden Painted Enclosure with MDF Board
- Power Supply: 750 Watts RMS / 1500 Watts Program / 3000 Watts Peak Power
- Woofer: 2x18"
- Magnet: 90 oz
- Voice Coil: 3 "
- Frequency Response: +/-3dB) 35 Hz - 200Hz
- Maximum SPL: 134dB Peak / 131dB Continuous
- Product Dimensions: 255.91" x 236.22" x 47.24" -inches

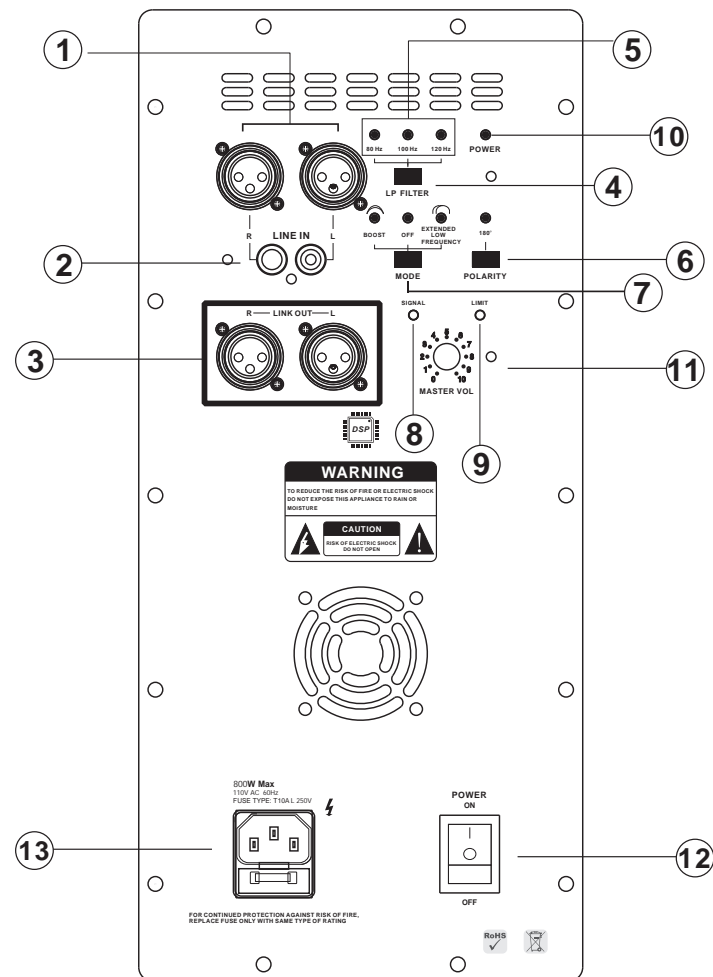
## Control Panel Layout

### PW12SUBA



1. Combo XLR socket Inputs
2. Line Inputs
3. XLR Line out socket
4. LP filter switch
5. **LP Indicator**  
LP Indicator for 80Hz/100Hz/120Hz
6. **Phase Indicator:** When light is off, it indicates that the phase is through
7. Model Shift of LP extend/Through/Bass indicator: indicated by three different LED light.
8. Signal LED indicator
9. Limit LED indicator
10. Power LED indicator
11. Volume Control
12. Power Switch
13. Fused LEC mains inlet

### PW15SUBA/PW18SUBA/PW218SUBA



#### California Prop 65 Warning

##### ⚠️ WARNING:

This product contains Nickel carbonate which is known to the state of California to cause cancer birth defects and other reproductive harm. Do not ingest.

For more info go to: [www.P65warnings.ca.gov](http://www.P65warnings.ca.gov)