

1080P HD ACTION CAMERA



USER MANUAL

Black

Silver

Red

Blue

MODELS: SLBCM18BK, SLBCM18SL, SLBCM18RD, SLBCM18BL

Contents

Precaution

Camera Interface

Use securing clip

Button function

Camera Operation

Power on/off

Battery Charging

Video Mode

Normal recording

Loop recording

Picture Mode

Playback Mode

Menu Setting

Install and use WIFI

Playback on PC

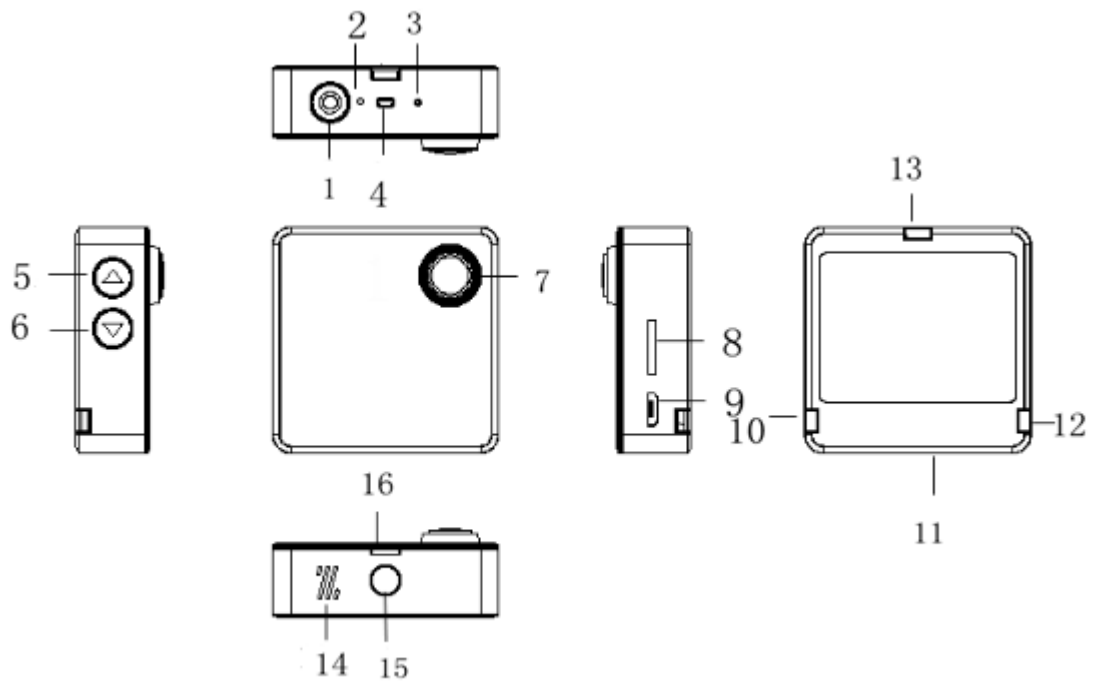
Technical specification

Precaution

Please make sure to look through the following guidelines before you use this camera.

- Please refer to manual instruction to operate camera correctly. Wrong operation may cause damage to internal components.
- Do not fall or hit camera, it may damage the internal components.
- Do not alter or dismantle camera to avoid damage.
- The temperature rise is normal when camera is used for a long time.
- Do not touch the lens when recording—it will affect video quality.
- Please use "Class10" and above Micro SD card to ensure proper function.

Camera Interface



- | | | | |
|--------------------|----------------|--------------------|------------------------------|
| 1.Power button | 2.Reset button | 3.Microphone | 4.Working/Charging indicator |
| 5.Up button | 6.Down button | 7.Lens | 8.TF card slot |
| 9.USB port | 11.Back shell | 10.12.13.16.Buckle | 14.Speaker |
| 15.1/4" screw hole | | | |

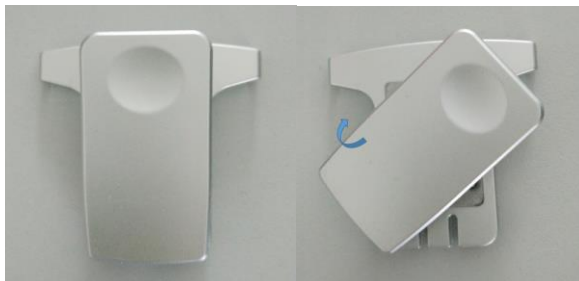
Engage securing clip:

Make sure the buckles of securing clip are aligned with camera.



Remove securing clip:

Hold the top position of camera, push securing clip up from the bottom and pull out the first securing clip. For the remaining two securing clip, push the left securing clip from right side and remove it.

**Secure clip is rotatable****Button Function****Power button:**

Short press to turn on camera/long press to turn off camera;

In standby mode - short press to start/stop the recording;

In picture mode - short press to take picture;

In playback mode - short press to start/pause playback;

In menu setting - confirm menu setting.

Up button:

Short press to switch into Video/Picture/Playback/Menu Mode;

In menu mode - short press to exit menu.

Down button:

In Menu setting or Playback mode - scroll down to next option;

In time setting - adjust the digit;

In standby mode - short press to enter WIFI;

In WIFI mode - short press to exit WIFI.

Camera Operation

Power on/off

Power on: Short press power button, blue working indicators light up, camera enters standby mode.

Power off: When camera is on, long press power button, blue working indicators will be off, camera powers off.

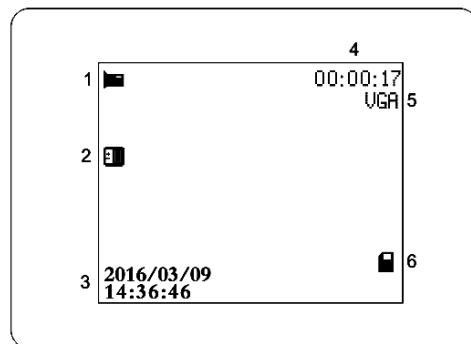
Battery Charging

Connect camera with power charger via USB cable, red charging indicator will light. Turn off machine when charging to charge faster.

VIDEO MODE:

Video interface:

- | | | |
|-------------------|--------------------------|---------------------------|
| 1. Record icon | 2. Exposure compensation | 3. Year /Month / Day/Time |
| 4. Recording time | 5. Video resolution | 6. Memory card |



Normal recording

Set "loop recording" to OFF in the menu, press power button, blue indicator will flash and camera starts to record until memory card is full. Press power button again to stop recording.

Loop recording (refer to menu setting)

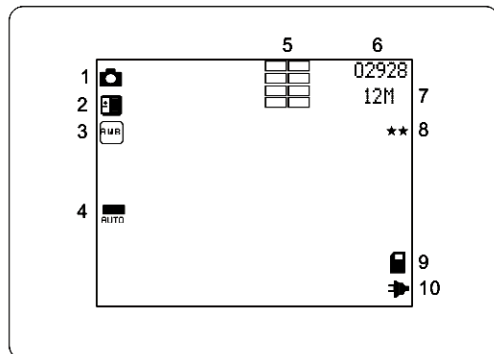
Under standby mode, press power button to start recording, blue indicator will flash. When video recorded up to the time you set (1 minutes/2 minutes/3 minutes/ 5 minutes/10 minutes), camera will save footage automatically and continue recording.

When TF card is full, camera will overwrite the first footage by time sequence and continue recording. Press Power button to stop recording, the remaining recording time shows on the LCD screen.

PICTURE MODE

Picture interface:

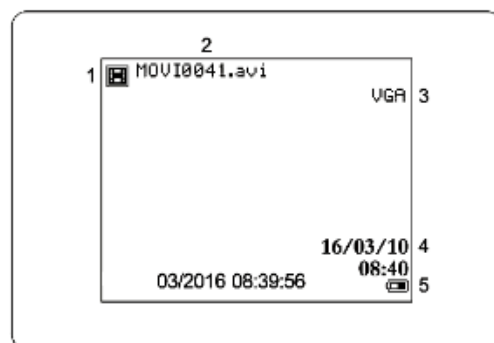
- | | | | |
|-----------------|-----------------|-----------------|-------------------|
| 1.Photo icon | 2.Exposure | 3.White balance | 4.ISO |
| 5.Sequence icon | 6.Remain photos | 7.Photo size | 8.Photo's quality |
| 9. Memory card | 10.Battery icon | | |



Camera default setting is Video mode, press Up button to enter Picture mode under standby mode. Aim at the object you want to shoot and press Power button, camera will save pictures automatically.

Playback Mode

- | | | |
|-----------------|----------------|-------------------------------|
| 1.Playback icon | 2.File number | 3.Video resolution/Photo size |
| 4. Date stamp | 5.Battery icon | |



In standby mode, press Up button to switch to Playback mode, press Down button to select files, press Power button to Preview/Playback and stop playing.

Menu Setting

In standby mode, short press Up button to enter or exit menu setting. Press Down button to select and press power button to confirm.

Video Size: 1080p 30fps/720p 30fps/WVGA 30fps/VGA 30fps

Loop Recording: OFF / 1 minute / 2 minutes / 3 minutes / 5 minutes / 10 minutes

Exposure: -2.0 -5/3 -4/3 -1.0 -2/3 -1/3 +0.0 +1/3 +2/3 +1.0 +4/3 +5/3 +2.0

Record Audio: Off / On

Date Stamp: Off / On

Image Size: 12M / 10M / 8M / 5M / 3M / 2MHD / 1.3M/VGA

Sequence: Off / On

Quality: Fine / Normal / Economy

Sharpness: Strong / Normal / Soft

White Balance: Auto / Daylight / Cloudy / Tungsten / Fluorescent

ISO: Auto / 100 / 200

Anti-shaking: Off / On

Delete: Delete Current/Delete All

Protect: Lock Current/Unlock Current/Lock All/Unlock All

Date/Time: 2016/05/12 11:11:11

Auto Power Off: Off/1 minutes/3 minutes

Screen Saver: Off/3 minutes/5minutes/10 minutes

Language: English/Traditional Chinese/Simplified Chinese/Japanese/German/French/
Korean/Italian/Portuguese/Russian/ Spanish /Arabic

Frequency: 50HZ/60HZ


Format: All data will be deleted: Cancel/OK

Default Setting: Return menu setting to defaults: Cancel/OK

Install and use WIFI

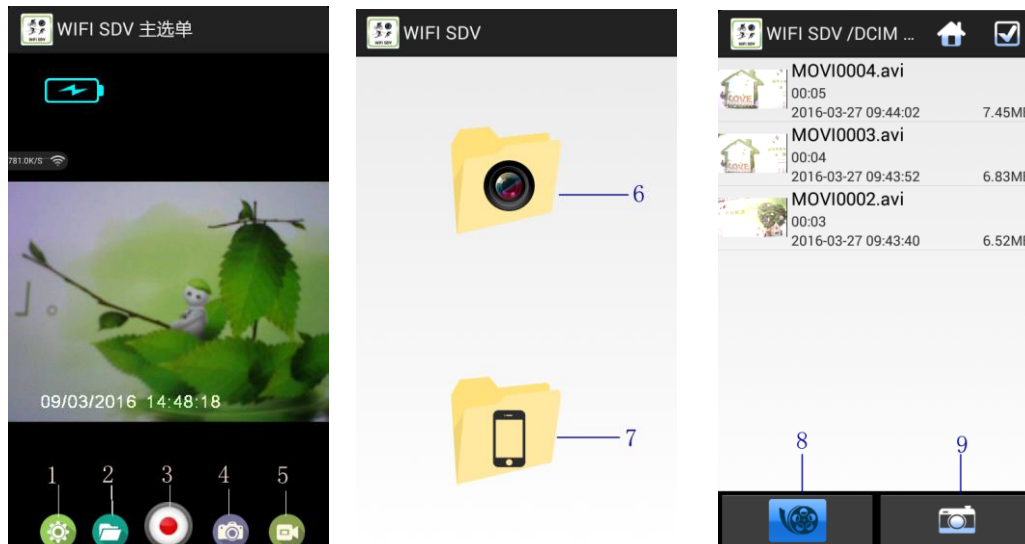
- Search "WIFI SDV" in Google Play or APP store and download WIFI APP.
- Install the APP in your smart phone.
- In video mode, short press Down Button to enter WIFI, camera's screen will display "SSID:WSDV-....."
- Find "WSDV-....." in the WIFI list of smart phone, enter password (Default password is 99999999) to connect it.



- Find the APP  in smart phone, then you can control camera via smart phone.
- Short press Down Button of camera to exit WIFI setting.

APP interface:

- | | | |
|----------------------------|-------------------|--------------------------|
| 1.Menu setting | 2.Playback mode | 3.Start/stop recording |
| 4. Picture mode | 5.Video mode | 6.Camera's micro SD card |
| 7. Download files on phone | 8.Video file list | 9.Picture file list |



Notes:

- Please make sure that micro SD card is inserted when WIFI will be used.
- The effective distance is influenced by your local environment. The decrease of WIFI signal and operation delay are normal.
- The "Power Saving Mode" in smart phone should be set to "OFF".
- The "Keep WIFI on during sleep" in smart phone should be set to "Always".

Playback on PC

Connect camera to PC via USB cable, camera will power on automatically, the screen will display: "Mass storage", "PC camera". Press Down button to select options, press Power button to confirm.

Mass Storage: Enter DCIM folder of MSDC to check files.

PC camera: Camera will be worked as a PC camera.

Technical specification

Dimension	50.5*50.5*16mm (not include the lens)
Lens	120 degree (4G+IR F=2.6 f=2.3mm)
Video Resolution	1920*1080@30fps/1280*720@30fps WVGA 848*480@30fps/VGA 640*480@30fps
Image size	12M 10M 8M 5M 3M 2M 1.3M VGA
Sensor	2 Mega CMOS Sensor
Screen	1.8" TFT screen
WIFI	Support
APP Share	Support
Anti-shake	Support
PC CAM	Support
White balance	Support
Loop recording	Optional 1/2/3/5/10 minutes
File Format	AVI/JPG
Battery	Rechargeable Li-ion battery (3.7V 430mAh)
Audio	Built-in Microphone/Speaker
Memory size	4GB to 32GB (Micro SD Card Class10 and Above)
Menu Language	Simplified Chinese/Traditional Chinese/English/French/Spanish/Italian/ German/ Japanese/Russian/Portuguese/Korean/Arabic

Notice: The manufacturer however reserves the right to amend the specifications according to market demand without notice.