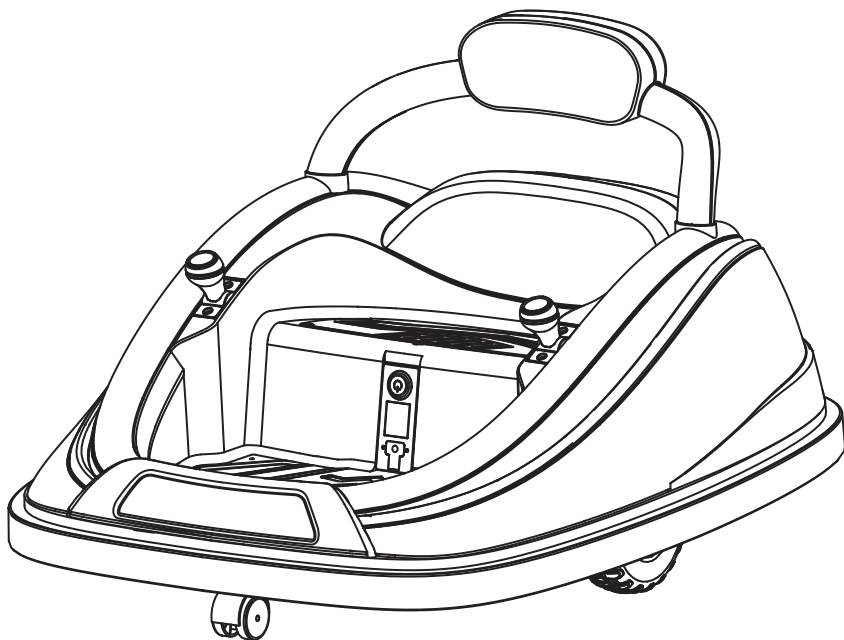


serenelife™



Kids Toy Electric Ride On Bumper Car Vehicle
with Remote Control, LED Lights
and 360 Degree Spin, 2 Driving Modes

USER GUIDE

The owner's manual contains important safety information as well as assembly, use and maintenance instructions.

The **Ride On Bumper Car** must be assembled by an adult who has read and understands the instructions in this manual.

- Keep the package away from children and dispose of properly before use.
- Keep this manual for future reference.
- Styles and colo(u)rs may vary.
- Made in China.

About Your New Ride-On

On the purchase of your new **Ride On Bumper Car**.

This **Ride On Bumper Car** will provide your child with many miles of riding of enjoyment. **To help assure you and your rider a safe ride we ask you to please read this manual carefully, and keep it for future reference.**

Follow the recommendations in this manual, they are designed to improve the safety and operation of your **Ride On Bumper Car** and it's rider.

User Notice

WARNING!

- **CHOKING HAZARD** - Small parts. Not suitable for children under 36 months.
The product contains small parts, keep children away when assembling.
- **ADULT ASSEMBLY REQUIRED.**
- Always remove protective material and poly bags and dispose before assembly.
- Protective equipment should be worn. Always wear shoes and sit in the seat when operating the vehicle.
- Only drive on level ground. Never use on the lawn.
- Never leave a child unattended.
- Keep your hands, hair, and clothes away from moving parts.



SAFETY

The following safety hazards may result in serious injury or death:

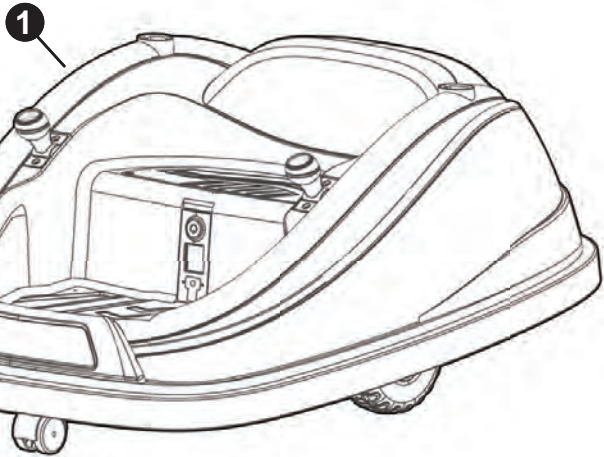
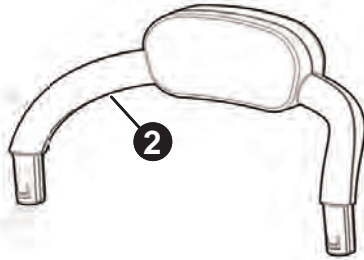
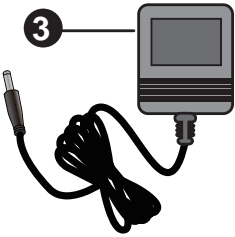
- Never leave child unattended. Direct adult supervision is required.
Always keep child in view when child is in vehicle.
- To reduce the risk of injury, adult supervision is required. Never use in roadways, near motor vehicles, on or near steep inclines or steps, swimming pools or other bodies of water, always wear shoes, and never allow more than 1 rider.
- Never use in unsafe conditions such as snow, rain, loose dirt, mud, sand, or gravel, otherwise may result in an unexpected accident such as tipping over, and could damage the electrical system or battery
- Not to be used in traffic.
- This toy should be used with caution since skill is required to avoid falls or collisions causing injury to the user or third parties.
- This toy is unsuitable for children under 36 months due to its maximum speed; Maximum user weight is **30kg**.
- This toy has no brake.

BATTERY INFORMATION

- Non-rechargeable batteries are not to be recharged.
- Rechargeable batteries are to be removed from the toy before being charged.
- Rechargeable batteries are only to be charged under adult supervision.
- Different types of batteries or new and used batteries are not to be mixed.
- Batteries are to be inserted with the correct polarity.
- Exhausted batteries are to be removed from the toy.
- The supply terminals are not to be short-circuited.

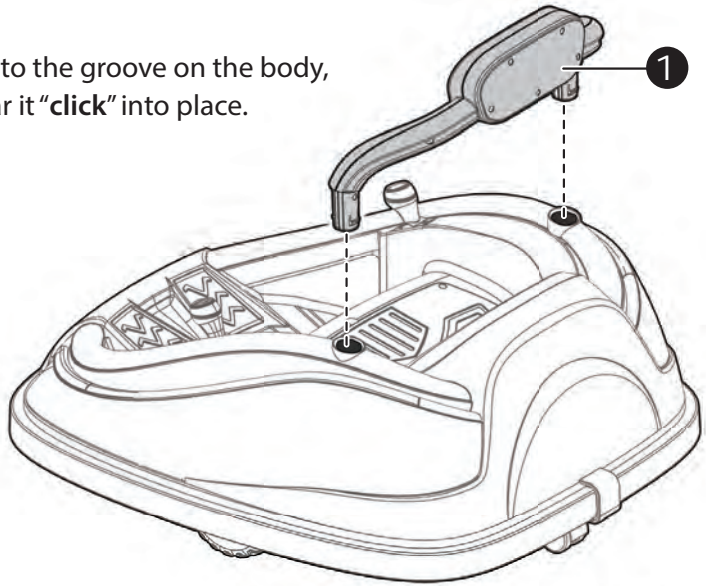
Parts List

PART NO.	PART NAME	Q'ty (pcs)		REMARKS
1	Vehicle body	1		
2	Back rest	1		
3	Charger	1		
4	Remote controller	1		For R/C type only

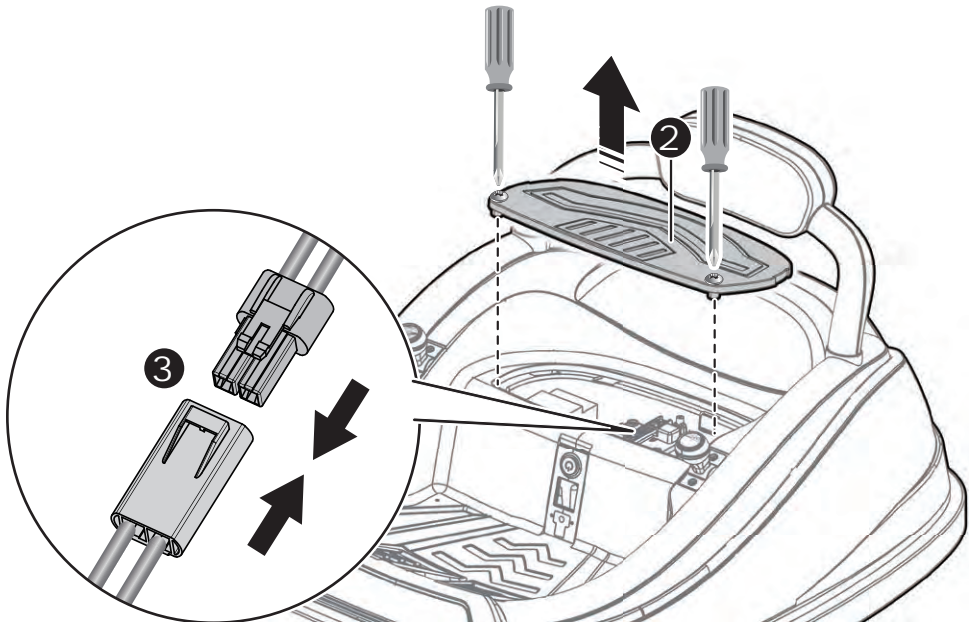


Assembly

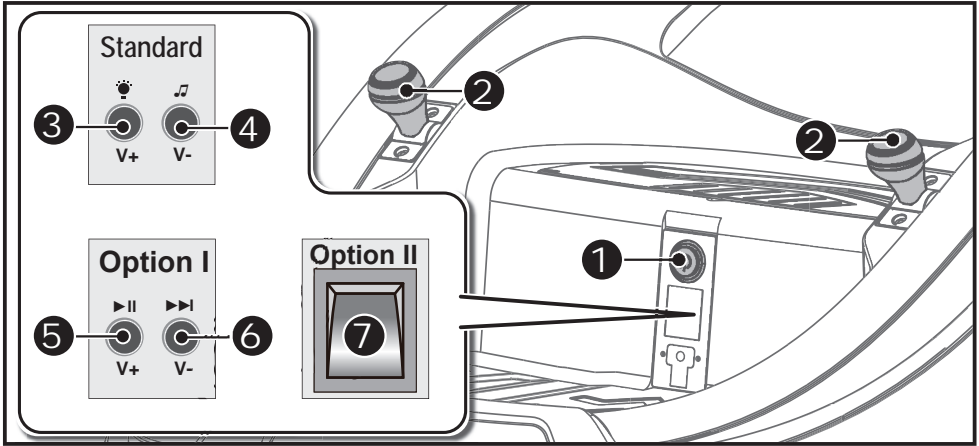
1. Fit the back rest into the groove on the body, push until you hear it "click" into place.



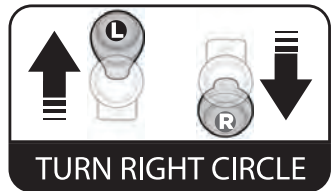
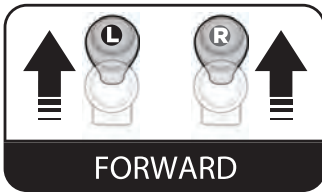
2. Loosen two screws on the top of the seat with a screwdriver and remove the seat.
3. Plug the connector on the vehicle body into the connector from the battery.
4. Replace the seat.



Use Your New Ride On



- 1. Power button:** Turn the product on and off.
- 2. Left and Right joysticks:** Control the product to move forward, backward, turn left (circle) and right (circle).



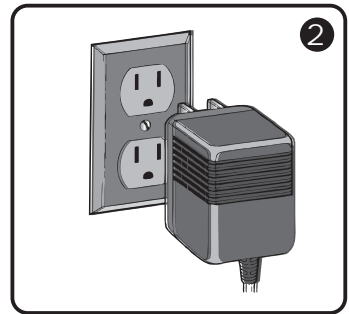
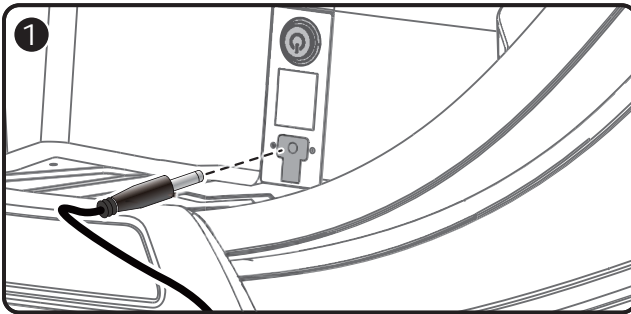
Standard Edition

- 3. Lights button:** Turn the lights on and off. Press and hold to increase volume.
- 4. Music button:** Press for music/sound playing. Press and hold to decrease volume. **Option I Edition (if equipped)**
- 5. Play/pause:** Press and hold to increase volume.
- 6. Next:** Press and hold to decrease volume. **Option II Edition (if equipped)**
- 7. Lights switch:** Turn the lights on and off.

Charging

WARNING!

- **ONLY an adult is allowed charge and recharge the battery!**
- **This product with Charging Protection: When charging, all functions will be cut off.**
- The **POWER SWITCH** must be turned in **OFF** position when charging.
- Before the first use, you should charge the battery for 4-6 hours. Do not recharge the battery for more than 10 hours to avoid overheating the charger.
- When the vehicle begins to run slowly, recharge the battery.
- After each use or once a month minimum recharge time as 8 to 12 hours, less than 20 hours at most.
- Use the only rechargeable battery and charger supplied with your vehicle. **NEVER** substitute the battery or the charger with another brand. Using another battery or charger may cause a fire or explosion.
- Do not use the battery or charger for any other product.



1. Plug the charger port into the input socket (the socket below the seat).
2. Plug the charger plug into a wall outlet. The battery will begin charging.

Battery Disposal

The battery will eventually lose the ability to hold a charge. Depending on the amount of use, and varying conditions, the battery should operate for one to three years. **Important!** Recycle the dead battery responsibly. The battery contains lead acid (electrolyte) and must be disposed of properly and legally. It is illegal in most areas to incinerate lead acid batteries or dispose of them in landfills. Take it to a federal or state-approved lead acid battery recycler, such as local automotive battery retailer. Do not throw the battery away with your regular household waste!

Troubleshooting Guide

Problem	Possible Cause	Solution
Vehicle does not run	Battery low on power	Recharge battery.
	Thermal fuse has tripped	Reset fuse, see <Fuse>
	Battery connector or wires are loose	Check that the battery connectors are firmly plugged into each other. If wires are loose around the motor contact your distributor please.
	Battery is dead	Replace battery, contact your distributor please.
	Electrical system is damaged	Contact your distributor please.
	Motor is damaged	Contact your distributor please.
Vehicle does not run very long	Battery is under charged	Check that the battery connectors are firmly plugged into each other when recharging
	Battery is old	Replace battery, contact your distributor please.
Vehicle runs sluggishly	Battery low on power	Recharge battery, contact your distributor please.
	Battery is old	Replace battery, contact your distributor please.
	Vehicle is overload	Reduce weight on vehicle.
	Vehicle is being used in harsh conditions	Avoid using vehicle in harsh conditions, see <Safety>.
Vehicle needs a push to go forward	Poor contact of wires or connectors	Check that the battery connectors are firmly plugged into each other. If wires are loose around the motor, contact your distributor please.
	“Dead Spot” on motor	A dead spot means the electric power is not being delivered to the terminal connection and the vehicle needs repair. Contact your distributor please.
Difficult shifting from forward to reverse or vice-versa	Attempting to shift while the vehicle is motion	Completely stop the vehicle and shift, see <Use Your Ride-On>
Loud grinding or clicking noises coming from motor or gear box	Motor or gears are damaged	Contact your distributor please.
Battery will not recharge	Battery connector or adapter connector is loose	Check that the battery connectors are firmly plugged into each other.
	Charger not plugged in	Check that the battery charger is plugged into a working wall outlet.
	Charger is not working	Contact your distributor please.
Charger feels warm when recharging	This is normal and not a cause for concern	

Completely read through this manual and the troubleshooting guide table before calling. If you still need help resolving the problem **Contact your distributor please.**

Maintaining

- It is parent's responsibility to check main parts of the toy before using. Must regularly examine for potential hazard, such as the battery, charge, cable or cord, plug, screws are fastening enclosure of other parts and that in the event of such damage, the toy must not be used until that damage had been properly removed.
- Park the vehicle indoors or cover it with a tarp to protect it from wet weather.
- Recharge the battery after each use. Only an adult can handle the battery. Recharge the battery at least once a month when the vehicle raider is not being used.
- Do not wash the vehicle with a hose. Do not wash the vehicle with soap and water. Do not drive the vehicle in rainy or snowy weather. Water will damage the motor, electric system and battery.
- Clean the vehicle with a soft, dry cloth. To restore shine to plastic parts, use a non-wax furniture polish. Do not use car wax. Do not use abrasive cleaners.
- When not using, all the electrical source should be turn off. Turn off the power switch and disconnect the battery connection.

Fuse

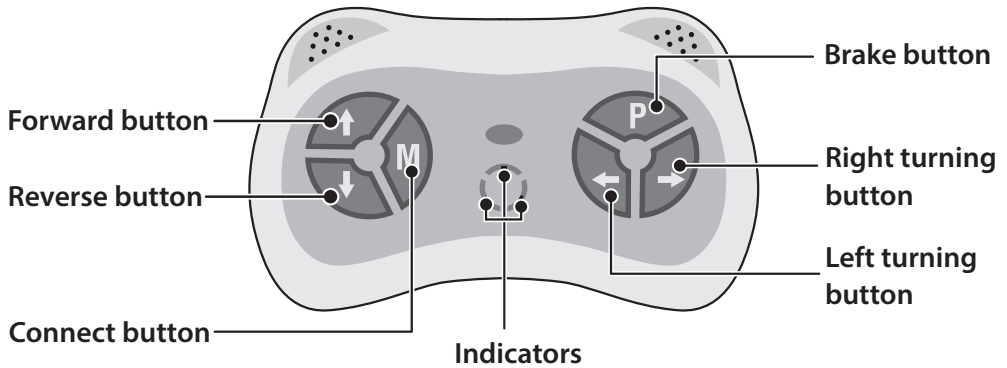
The battery features a thermal fuse with a rest fuse that will automatically trip and cut all power to the vehicle if the motor, electric system or battery is overloaded. The fuse will reset and power will be restored after the unit is turned OFF for 20 seconds and then turned ON again. If the thermal fuse trips repeatedly during normal use, the vehicle may need repair. Contact your distributor please.

To avoid losing power, follow these guidelines:

- Do not overload the vehicle.
- Do not tow anything behind the vehicle.
- Do not drive up steep slopes.
- Do not drive into fixed objects, which may cause the wheels to spin, causing the motor to overheat.
- Do not drive in very hot weather, components may overheat.
- Do not allow water or other liquids to come in contact with the battery or other electric components.
- Do not tamper with the electric system. Doing so may create a short, causing the fuse to trip.

Use the Remote Controller

WARNING: ADULT OPERATING REQUIRED!



**The remote control has precedence over foot pedal operation.
(The foot pedal won't work while you operate the Remote Controller)**

1. Connect button (build connection): Lift the battery compartment door on the back of the controller and insert two AAA (LR03) batteries.

NOTE: Batteries not included. Refer to the battery information on page 3.

Press and hold the connect button for 3 seconds, the indicators flashes, means that the remote controller is in the connected state. Then power ON the product:

- The indicators goes to long bright, means the connection successful.
- If indicator no response, means the connection failed. Turn off the remote controller (by removing the batteries) and the product. And try again.

2. Brake button: Press the button to stop the vehicle, press it again to release the brake.

Note:

- Leave the remote controller idling for about 10 seconds, it will shut down automatically.
- After replacing the batteries of the remote controller, please rebuild the connection. (step 1)

Features:

- 360° Spinning Bumper Car
- High-Quality and Adjustable Safety Belt
- Light Button, Control Panel and Soft Bumper
- Anti-Flat Tires
- Colorful Flashing Lights
- Built-in Rechargeable Battery
- Durable Wheels for more Flexible Steering
- Easy to Install and Use
- No Assembly Needed

What's in the Box:

- Ride-on Bumper Car
- Remote Control
- Charger (12V500mA)

Technical Specs:

- Construction Material: PP
- Motor: 12V/30W
- Speed: 1.875mph (3km/h)
- Weight Capacity: 66lbs
- Charger: 12V 500mA
- Battery Type: 12V 4.5 Ah
- Recommended for Ages: 37-96 months
- Use Time: 45 minutes.
- Charging Time: 8-12 hrs.
- Remote Control Battery Operated, Requires (2) x 'A AA' Batteries
- Remote Control Battery Type: alkaline battery
- Battery Life: Up to 2+ Hours
- Overall Dimension: 29.9" x 25.2" x 17.7" -inches

California Prop 65 Warning

 **WARNING:**

This product contains Lead, Phthalates which is known to the state of California to cause cancer birth defects and other reproductive harm. Do not ingest.

For more info go to: www.P65warnings.ca.gov



serenelife™

Questions? Comments?

We are here to help!

Phone: (1) 718-535-1800

Email: support@pyleusa.com

