



serenelife™



SLLOUNG70

Adjustable Patio Chaise Lounge

for Outdoor Patio Use, Adjustable with 5 Positions,
Waterproof & Easy to Assemble

USER GUIDE



ASSEMBLY INSTRUCTIONS

Our clear, easy-to-follow, step-by-step instructions will guide you through the project from start to finish. **DO NOT** assemble this item alone for your safety. Two people are necessary for smooth & safe installation.

Item identification: For ease of identification, all parts are labeled to correspond to the step number in which the part is used.

Features:

- Comfortable, Smooth and Sturdy Surface
- Multi-Level Backrest Adjustment
- Weatherproof and Waterproof Outdoor Furniture
- UV and Fade Resistance
- Durable and Long-lasting Use
- Lightweight and Easy to Move
- Easy to Assemble and No Tools Needed
- Marine-grade Quality Hardware
- Eco-Friendly and Updated PP Material to Prevent Bending and Fading

What's in the Box:

- Patio Chaise Lounge Chair

Technical Specs:

- Construction Materials: PP
- Weight Capacity: 600 lbs.
- Assembly Time: 20-25 minutes
- Overall Dimensions: 74.5" x 22.8" x 11.3" -inches

California Prop 65 Warning

 **WARNING:**

This product contains Polycyclic aromatic hydrocarbons (PAHs) which is known to the state of California to cause cancer birth defects and other reproductive harm. Do not ingest.

For more info go to: www.P65warnings.ca.gov

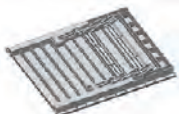
PARTS LIST



F (X1)



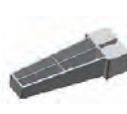
B (X1)



CB (X1)

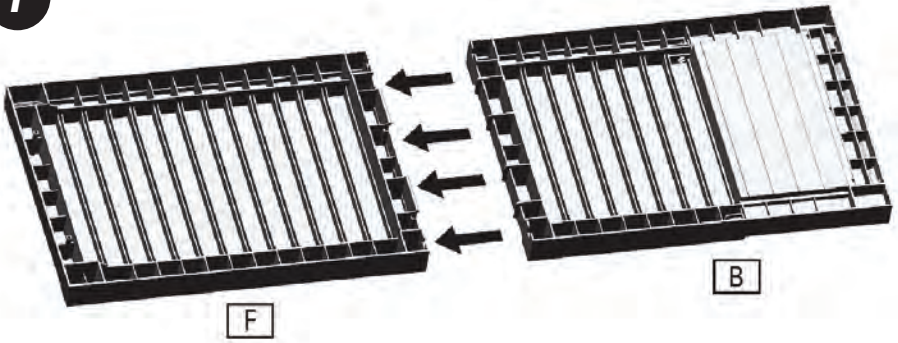


M1 (X4)

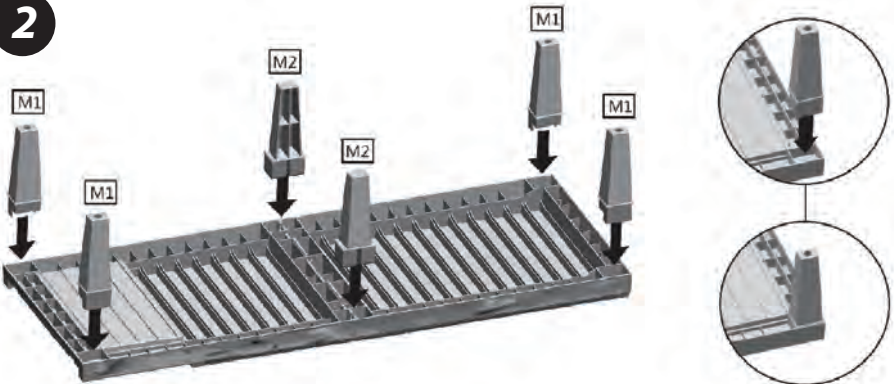


M2 (X2)

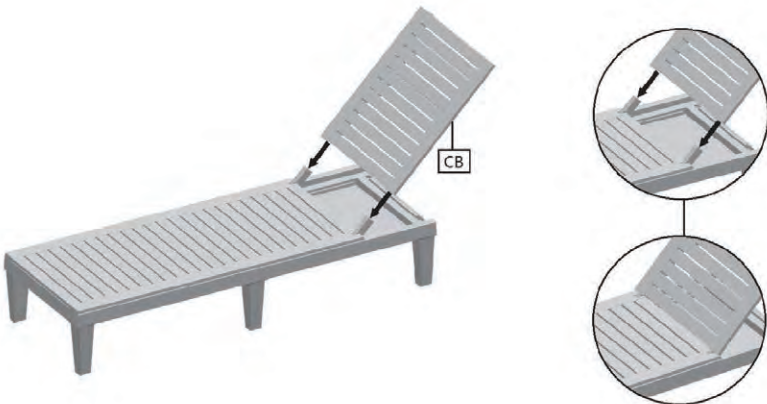
1



2



3





serenelife™

Questions? Comments?

We are here to help!

Phone: (1) 718-535-1800

Email: support@pyleusa.com

