

SLMAQLGHD26

Female Mannequin Long Hand

Heavy Duty Jewelry Display Holder
Bracelet Necklace Ring Stand (Black)

serenelife™

USER GUIDE

Features:

- Extended Long Dummy Female Mannequin Hand
- Lightweight Jewelry Long Hand Holder Stand
- Display Rings & Bracelets in an Elegant Way
- Strong and Sturdy, Color-Resistant, Not Easy to Fade
- Hand can be Stood up to Offer a Three-Dimensional Display
- Suitable to Show Off Jewelries such as Ring, Bracelet, Bangle, Watch, Glove, etc

What's in the Box:

- Hand
- Magnetic Metal Piece

Technical Specs:

- Construction Materials: PP + Metal Base
- Wrist Circumference: 5.5" -inches
- Bottom Circumference: 3" -inches
- Length Size: 6.3" -inches
- Height Size: 18.5" -inches

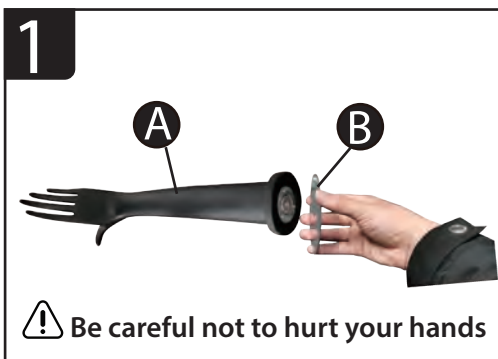


⚠ ADULT ASSEMBLY REQUIRED

Read all instructions before assembly and use.
Due to the presence of small parts during assembly,
keep out of reach of children until assembly is complete.

Questions? Comments?

We are here to help!
Phone: (1) 718-535-1800
Email: support@pyleusa.com



PRODUCT DISPLAY



front



side



back