

serenelife[∞]™



SLFPCN56

Propane Gas Fire Pit Table

50,000 BTU Square Gas Firepits with Cover for Outside

USER GUIDE

 **WARNING**

USE PROPANE GAS ONLY!

- Do not store or use gasoline or other flammable vapors in the vicinity of this or any other appliance.
- Service must be performed by a qualified installer, service agency or the gas supplier.

 **WARNING:**

- For use with cylinders marked **PROPANE** only.
- **DO NOT** connect to a remote gas supply.
- If the firebowl is stored indoors, detach and leave propane cylinder outdoors.

 **WARNING:**

For Outdoor Use Only! Use Propane Gas Only!
Propane cylinders sold separately.

 **WARNING:**

Improper installation, adjustment, alteration, service or maintenance can cause injury or property damage. Read the owner's manual thoroughly before installing or servicing this equipment. If the information in this manual is not followed exactly, a fire or explosion may result causing property damage, personal injury or loss of life.

 **WARNING:**

The propane cylinder must be disconnected when this firebowl is not use.

 **DANGER:**

If you smell gas:

1. Shut off gas to the appliance.
2. Extinguish any open flame.
3. If odor continues, keep away from the appliance and immediately call your gas supplier or fire department.

INSTALLER:
Leave this manual with the appliance.
CONSUMER:
Retain this manual for future reference.



 **WARNING:**

This firebowl must be attended at all times!

 **WARNING:**

An LP-cylinder not connected for use shall not be stored in the vicinity of this or any other appliance.

 **DANGER**

CARBON MONOXIDE HAZARD



This appliance can produce carbon monoxide which has no odor.
Using it in an enclosed space can kill you.
Never use this appliance in an enclosed space such as a camper, tent, car or home.

SAFETY INFORMATION

Before you assemble or operate this unit, please carefully read this entire manual. Failure to do so may result in a fire, explosion, injury or death.

WARNING!

- The installation of this product must conform with local codes or, in the absence of local codes, with either the National Fuel Gas Code, ANSI Z223.1/NFPA 54, OR CAN/CGA-B149.1, National Gas and Propane Installation Code.
- **FOR OUTDOOR USE ONLY!** This appliance shall be used only outdoors in a well ventilated space and shall not be used in a building, garage, or any other enclosed area.
- **USE PROPANE GAS ONLY!**
- Use only with a propane gas tank (sold separately).
Do not attach to a remote gas supply.
- Propane gas is not natural gas. Only use propane gas for this firebowl.
- The conversion or attempted use of natural gas in a propane unit or propane gas in a natural gas unit is dangerous and not recommended.
Doing so will void your warranty.
- Never use charcoal or any other solid fuel in the firebowl.
- During ignition procedure, you should never get your face close to the burner as an unnoticed flame may light up and cause injury.
- **LP GAS WARNING:** Do not exceed 1/4 in. depth of lava rocks directly above burner holes. Applying too much media may result in unburned gas pooling in firebowl. Ventilation is required to allow fresh air into enclosure and for any residual gas to escape.
- **If you see, smell or hear the hiss of escaping gas from the propane gas tank:**
 1. Disconnect propane gas tank.
 2. Do not attempt to correct the problem yourself.
 3. Get to your gas supplier and/or the fire department for help.
- Do not operate the firebowl if there is a gas leak present.
- Never use a flame to check for gas leaks.
- The max. inlet supply pressure: max. gas supply 11 inch w.c. (2.74kPa).
- The gas pressure regulator provided with the firebowl must be used.
- Use LP propane gas tanks only with these required measurements: 12 in. (diameter) x 18 in. (tall) with 20 lb. capacity maximum.
- Propane tank used must include a collar to protect the propane gas tank valve.
- Never fill the propane gas tank beyond 80% full.

- Propane gas tank supply system must be arranged for vapor withdrawal.
- Do not use a propane gas tank with a damaged valve and any other worn out parts. A dented or rusty propane gas tank may be hazardous and should be checked by your gas supplier prior to use.
- Do not burn any other materials than are supplied with and intended for use in this firebowl.
- Lava rocks could hit somebody's face or eyes during initial start of this unit, so please keep away from the firebowl for the first 20 minutes after it has been ignited.
- Do not operate firebowl unless it is completely assembled and all parts are in place.
- Pay attention when operating the firebowl. It is hot when in use and should never be left unattended. Do not move it while in operation.
- Do not use this firebowl for cooking.
- Do not put any other fireplace cover or anything flammable on, beneath or around the firebowl.
- Users should be alerted to the hazards of high surface temperatures and keep a safe distance to avoid burning or clothing ignition.
- Do not sit on the firebowl. Do not rest feet or hands on the firebowl.
- Never lean over the open firebowl or place hands or fingers on the upper portion of an operational unit.
- Keep any electrical supply cords and the fuel supply hose away from any heated surfaces.
- Combustible materials should never be within 72 inches of the top, 48 inches of the back or sides of the firebowl.
- This firebowl must be attended at all times!
- Should the fire go out while burning, turn the gas valve off. Follow the instructions and wait five minutes before attempting to relight.
- Do not use this firebowl if any part has been under water.
- Do not pour water into firebowl.
- Immediately call a qualified service technician to inspect the appliance and to replace any part of the control system and any gas control which has been under water.
- Do not light or use gas unit if lava rocks are wet. Ensure lava rocks are completely dry before igniting as intense heat could cause the rocks to crack or pop.
- Do not attempt to disconnect the gas regulator or any gas fittings while your firebowl is in operation.

- Do not handle firebowl until it is shut off and completely cooled.
- The propane gas tank must be disconnected when firebowl is not in use.
- Do not store a spare or disconnected propane gas tank under or near this firebowl, or in the vicinity of any other appliance.
- If the firebowl is stored indoors, detach and leave propane gas tank outdoors.
- Remove the battery when not using the firebowl for an extended length of time.
- Clean the battery contacts and also those of the device prior to battery installation.
- Do not enlarge valve orifices or burner ports when cleaning the valve or burner.
- Do not use this firebowl on vehicles or boats. Always operate the appliance on flat ground outdoors.
- Remove the PVC cover from the firebowl before operating the appliance.
- Do not lay the PVC cover over the firebowl until it is turned off and completely cooled down.
- After a period of storage and/or non-use, the propane firebowl should be checked for gas leaks and burner obstructions before use.
- The propane firebowl should never be used by children.
Children must be supervised when they are anywhere near the appliance.
- Please keep gas tank a minimum of 5 feet away from firebowl when lit.
- The maximum gas supply pressure is 250psi.
- Clothing or other flammable materials should not be hung from the appliance, or placed on or near the appliance.
- Any guard or other protective device removed for servicing the appliance must be replaced prior to operating the appliance.
- All installation and repair should be done by a qualified service person.
This appliance should be inspected annually. More frequent cleaning may be required as necessary. It is imperative that the control compartment, burners and circulating air passageways of the appliance be kept clean.
- Inspect the burner before each use of this firebowl. If there is evidence of damage, the burner must be replaced prior to use of this firebowl.
- Inspect the hose before each use of this firebowl. If the hose shows signs of cracks, abrasion, cuts or damage, do not use this firebowl.
Fix the hose as required before using appliance.
- Remove the hose out of pathways where it may be tripped over or subject to accidental damage.
- Children and adults should be alerted to the hazards of high surface temperatures and should stay away to avoid burns or clothing ignition.

- Young children should be carefully supervised when they are in the area of this appliance.
- The LP gas supply tank must be constructed and marked in accordance with the specifications for LP gas tanks of the U.S. Department of Transportation (DOT) or the National Standard of Canada CAN/CSA-B339, LP gas tanks, spheres and tubes for the Transportation of Dangerous Goods; and Commission.
- The LP gas tank must have a listed overfilling prevention device (OPD) and a QCCI or Type I, (CGA810) LP gas tank connection.

Inspect the hose before each use of the appliance. If the hose shows signs of cracks, abrasions, cuts or damage of any kind, do not operate the appliance. Fix or replace the hose as required before using the appliance. Use only replacement parts from the manufacturer.

WARNING!

- Do not light or use gas unit if lava rocks are wet. Ensure lava rocks are completely dry before igniting as intense heat could cause the rocks to crack.
- Lava rocks could hit someone's face or eyes during initial start of this unit, so please keep away from the firebowl for the first 20 minutes after it has been ignited.
- **LP GAS WARNING:** Do not exceed 1/4" depth of fire glass or small lava rocks directly above burner holes. Applying too many lava rocks/fire glass may result in unburned gas pooling in firebowl. Ventilation is required to allow fresh air into enclosure and any residual gas to escape.
- This heating item should not be used on plastic composite or artificial wood decks.

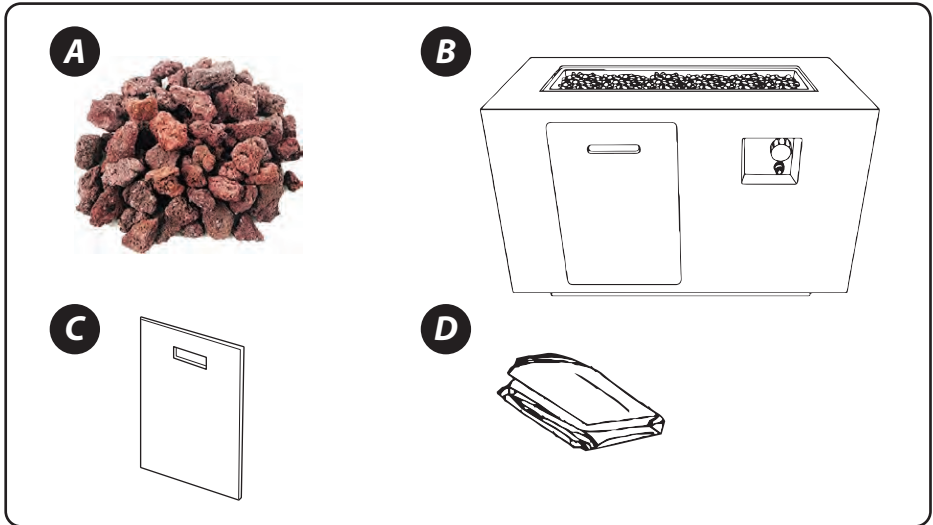
Warranty and Installation Information:

We warranty will be voided by and we disclaims any responsibility for the following actions:

- Modification of the firebowl and/or components including the gas valve assembly.
- Use of any component part not manufactured approved.
- Use and installation other than as instructed in this manual.

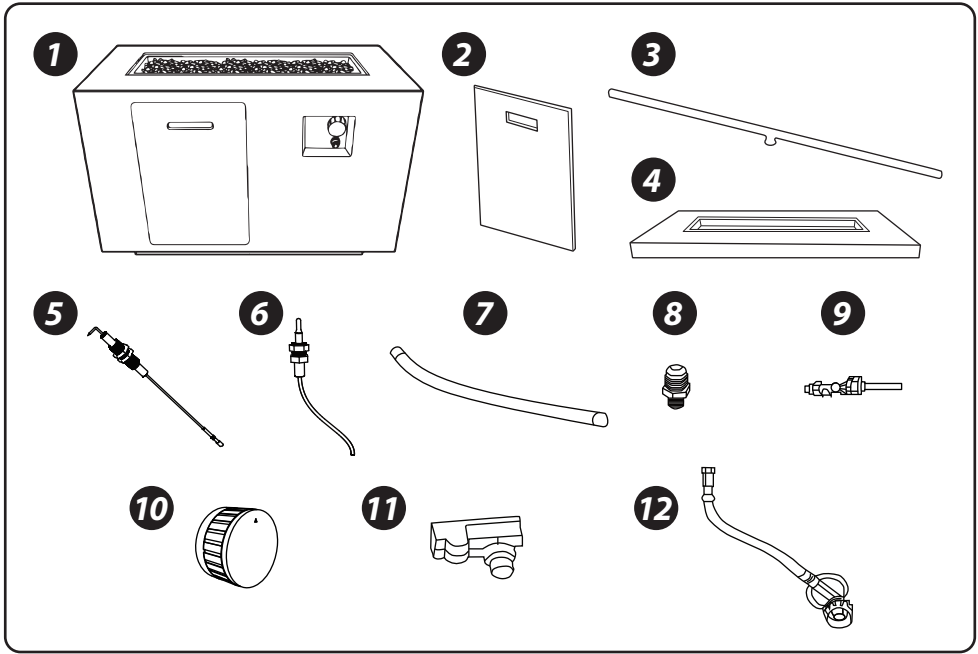
PARTS LIST

ITEM	SPECIFICATION	QTY
A	Lava rocks	1 box
B	Body	1 PC
C	Door	1 PC
D	PVC cover	1 PC



ITEM	SPECIFICATION	QTY
1	Body	1 PC
2	Door	1 PC
3	Burner	1 PC
4	Firebowl pan	1 PC
5	Ignition pin	1 PC
6	Thermocouple	1 PC
7	Corrugated pipe	1 PC

ITEM	SPECIFICATION	QTY
8	Injector	1 PC
9	Gas valve	1 PC
10	Control knob	1 PC
11	Pulse ignition	1 PC
12	Regulator	1 PC
13	Ignition Screen	1 PC
14	Grounding wire	1 PC



ASSEMBLY INSTRUCTIONS

Please keep User's manual for future reference.

If you have opened the carton and removed all packages, please disregard STEP 1 and 2. See STEP3 directly.

STEP 1:

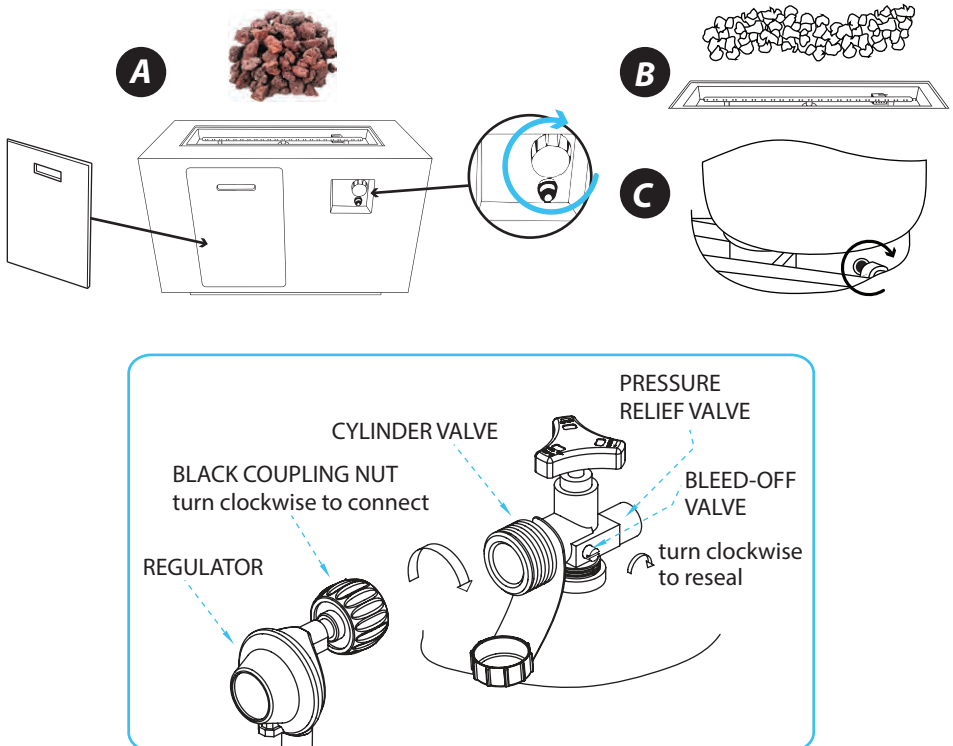
1. Open the carton and turn it upside down, making sure the 4 pieces of the carton opens up.
2. Lift off the carton carefully and be wary of the accessories inside falling away.
3. Take all the packing materials away except for the paper honeycomb board rounding the top of the firebowl.

STEP 2:

1. Turn the firebowl heads up on a flat ground.
2. Remove all the paper honeycomb board rounding the top of the firebowl.

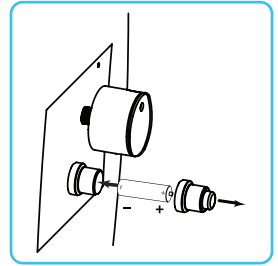
STEP 3:

1. Check each part before using the product. Make sure the gas supply system is turned "OFF" before assembling. **See Figure A.**
2. Open the storage door on the firebowl for the gas tank.
Take away the box containing lava rock. **See Figure A.**
3. Put the gas tank in the metal stand. Make sure the gas tank sits on the metal stand completely. Turn the wing screw on the outer part of metal stand clockwise to secure the gas tank tightly. **See Figure C.**
4. Evenly distribute the lava rocks in the firebowl. **See Figure B.**
DO NOT COVER THE IGNITION SCREEN when placing the lava rocks into the firebowl. Always keep Ignition Screen visible. Connect the Pressure-Regulating Valve to the gas tank. **See Figure A.**



Turn the cylinder valve on the tank clockwise to close the propane tank. Attach the preassembled regulator from the Body to the cylinder valve by turning the regulator coupling nut clockwise. Make sure it is fastened securely and tighten connections by hand only.

Remove the rubber cap on the electronic igniter by unscrewing and slide battery into the battery slot. Make sure the positive side of the battery faces outwards. Screw the electronic igniter cap over the battery tightly.



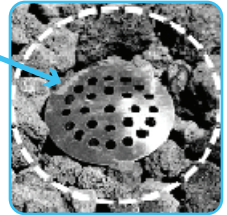
WARNING AND FIGURES

⚠ Warning!

This screen must be clear and free of obstructions at all times to ensure proper operation.

Screen

DO NOT PLACE LAVA ROCKS ON THE SCREEN. KEEP SCREEN CLEAR



⚠ Warning!

The burner of the firebowl must be covered by lava rocks or fire glass completely. Otherwise the flame may be extinguished. See the Figure for the **CORRECT** and **INCORRECT** ways for reference.



CORRECT



INCORRECT

Perform leak test in a well-ventilated area outside and where no source of spark can occur. Remove battery from igniter. Open tank valve fully (counter-clockwise). Turn the on/off valve at the unit to the **“OFF”** position to pressurize the hose assembly. Use a soapy water solution to check all the connections for leaks before attempting to light the appliance. **If a leak is found, turn the tank valve off and do not use the appliance until repairs can be made.**

TO LIGHT

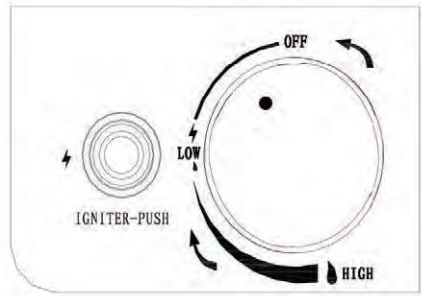
Before each use, inspect the hoses. Replace hose if there are any signs of cutting, wear or abrasion.

1. Turn the cylinder valve on the gas tank counter-clockwise to open the gas supply.
2. Close the storage door on the firebowl for the gas tank.
3. Light the firebowl as below in the following image:

A. Press and hold the electric igniter. At the same time, push and turn the control knob counter-clockwise to the 'LOW' position. Keep pushing the control knob to light the burner.

B. After ignition, release the electric igniter. Continue to push and hold the control knob for 45 seconds.

C. If ignition does **NOT** occur within a few seconds, push and turn the control knob clockwise to 'OFF'. Wait 5 minutes, and then repeat the lighting procedure as above.



Caution:

If the burner does not ignite with the valve open, gas will continue to flow out of the burner and could accidentally ignite with risk of injury.



10 in.

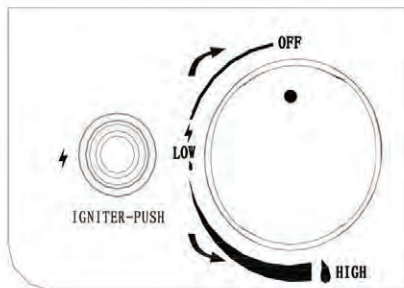
2 in.

Observe flame height when lit:

Flame should be a yellow/blue color and be from 5cm to 25.5 cm (2 in – 10 in) high.

TO EXTINGUISH

- Push the control knob and turn clockwise to the 'OFF' position.
- Turn the cylinder valve on the gas tank clockwise to close the gas supply if not in use for a long time. (See figure below.)



ROUTINE CARE

- Keep your firebowl free and clear of combustible materials.
- Visually inspect burner for obstructions and keep firebowl free and clear from debris.
- After the burner and lava rocks are completely cooled down, use a soft brush to clean away mild stains and debris. Wipe with a soft cloth.

STUBBORN STAINS

- Stubborn stains, discoloration and possibly rust pitting can occur from exposure to harsh outdoor conditions.
- Be careful not to let any powder or solvent come in contact with painted or plastic components as damage may occur.

MAINTENANCE

- Store the firebowl in a cool dry place away from direct sunlight and precipitation.
- The propane cylinder must be disconnected and removed from the firebowl before the appliance can be stored indoors.
- Make sure both the gas and the firebowl are turned off before changing battery. Please refer to the battery assembly instructions.
- Use manufacturer-approved or supplied replacement parts and accessories only. Otherwise this will void the warranty of this product and may result in a hazardous condition.
- Please contact the manufacturer for information regarding replacement hoses, thermocouples, igniters, lava rocks, etc.
- Protect your firebowl with the PVC cover when not in use.
Cover is for UV protection and not suitable for protection from inclement weather.

Features:

- Not Convertible to Natural Gas
- Assembled Gas Hose Regulator
- Adjustable Flame Height by Valve Knob
- Sturdy Gas Fire Pit Table
- Easy to Put Propane Tank, In, and Out
- Control Panel
- 50,000 BTU Heat output
- Stainless Steel Burner
- Constructs with Weather Resistant
- Safe and ETL Certified and Approved
- Decorative Lava Rock Set
- Creates an Elegant Atmosphere in the Garden, Terrace, Balcony, or Backyard

What's in the Box:

- 201 SS Burner
- Copper Injector
- Control Knob
- Gas Valve
- Igniter
- Corrugated Pipe
- Thermocouple
- Fire Pin with Protective Guard
- PVC Cover
- Lava Rock
- User manual

Technical Specs:

- Construction Material: MGO
- Heat Output: 50,000 BTU
- Regulator Valve with Gas Hose Length: 15" -inches
- Primary Fuel Type: Liquid Propane
- Propane Tank Weight: 20lbs. (Not Included)
- Ignition Type: Pulse Ignition
- Product Dimension (L x W x H): 42" x 20" x 23.6" -inches

serenelife™

Questions? Issues?

We are here to help!

Phone: (1) 718-535-1800

Email: support@pyleusa.com